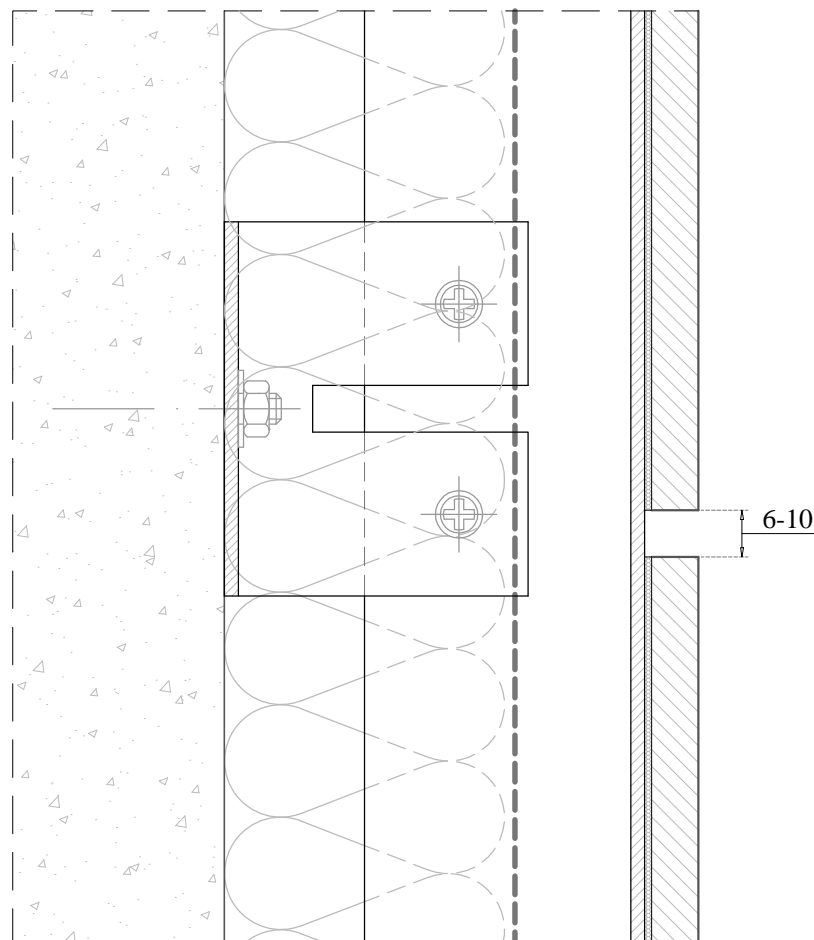


A: BASE VENTILATION  
 B: HEAD VENTILATION  
 C: TYP. HORIZONTAL JOINT  
 D: TYP. VERTICAL JOINT  
 E: WINDOW CILL  
 F: WINDOW JAMB  
 G: WINDOW HEAD

H: INSIDE CORNER  
 I: OUTSIDE CORNER  
 J: DOOR HEAD  
 K: DOOR JAMB  
 L: TRANSVERSAL SOFFIT  
 M: LONGITUDINAL SOFFIT

Project	<b>CONCEALED FASTENING WITH ADHESIVE</b>	
Plan	<b>GENERAL PERSPECTIVE</b>	
Units	Product	
<b>Milimetres (mm)</b>	<b>Prodema</b> NATURAL WOOD BEAUTY	<b>PRODEX</b>
Plan code	The updated version of this present installation detail can be found on the Prodema web.	
<b>PREX 2-05-GP</b>	Page	<b>1</b>



Project

**CONCEALED FASTENING  
WITH ADHESIVE**

Plan

**FIXING DETAIL**

**Prodema**  
NATURAL WOOD BEAUTY

Product

**PRODEX**

Units

**Milimetres (mm)**

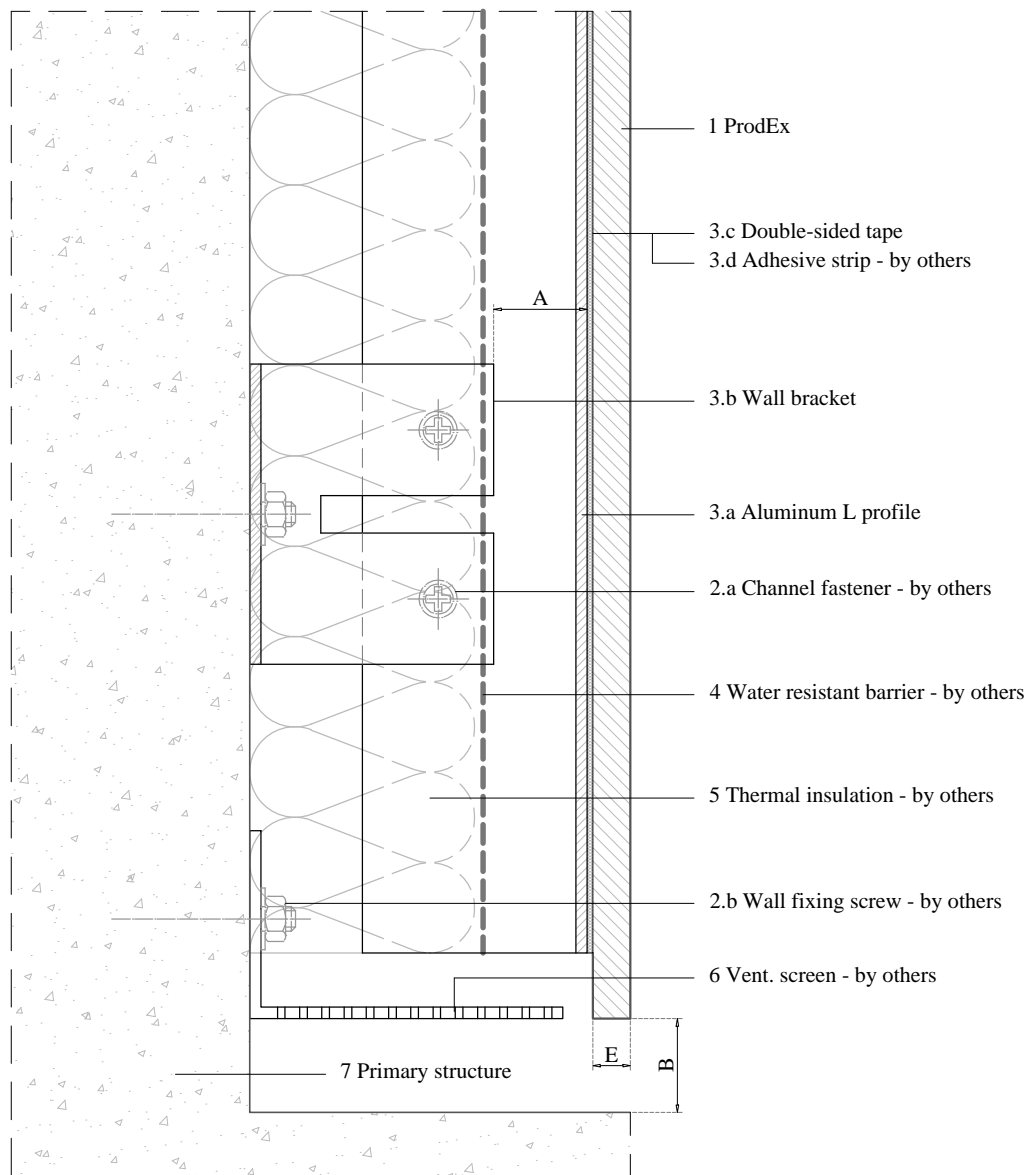
The updated version of this  
present installation detail can  
be found on the Prodema web.

Plan code

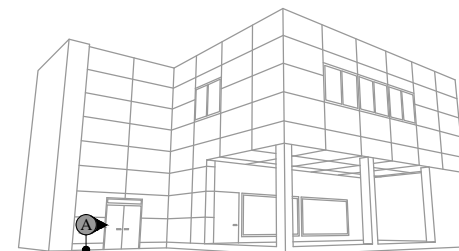
**PREX 2-05-FIX**

Page

**2**



E	Panel thickness $\geq 8$ mm	
B	Circulation of air $\geq 20$ mm	
A	Required min. air chamber $\geq 20$ mm	
7	Primary structure	
6	Vent. screen - by others	
5	Thermal insulation - by others	
4	Water resistant barrier - by others	
3.d	Adhesive strip - by others	+ primer
3.c	Double-sided tape	
3.b	Wall bracket	
3.a	Aluminum L profile	
3	Profiles	
2.b	Wall fixing screw - by others	
2.a	Channel fastener - by others	
2	Screws	
1	ProdEx	



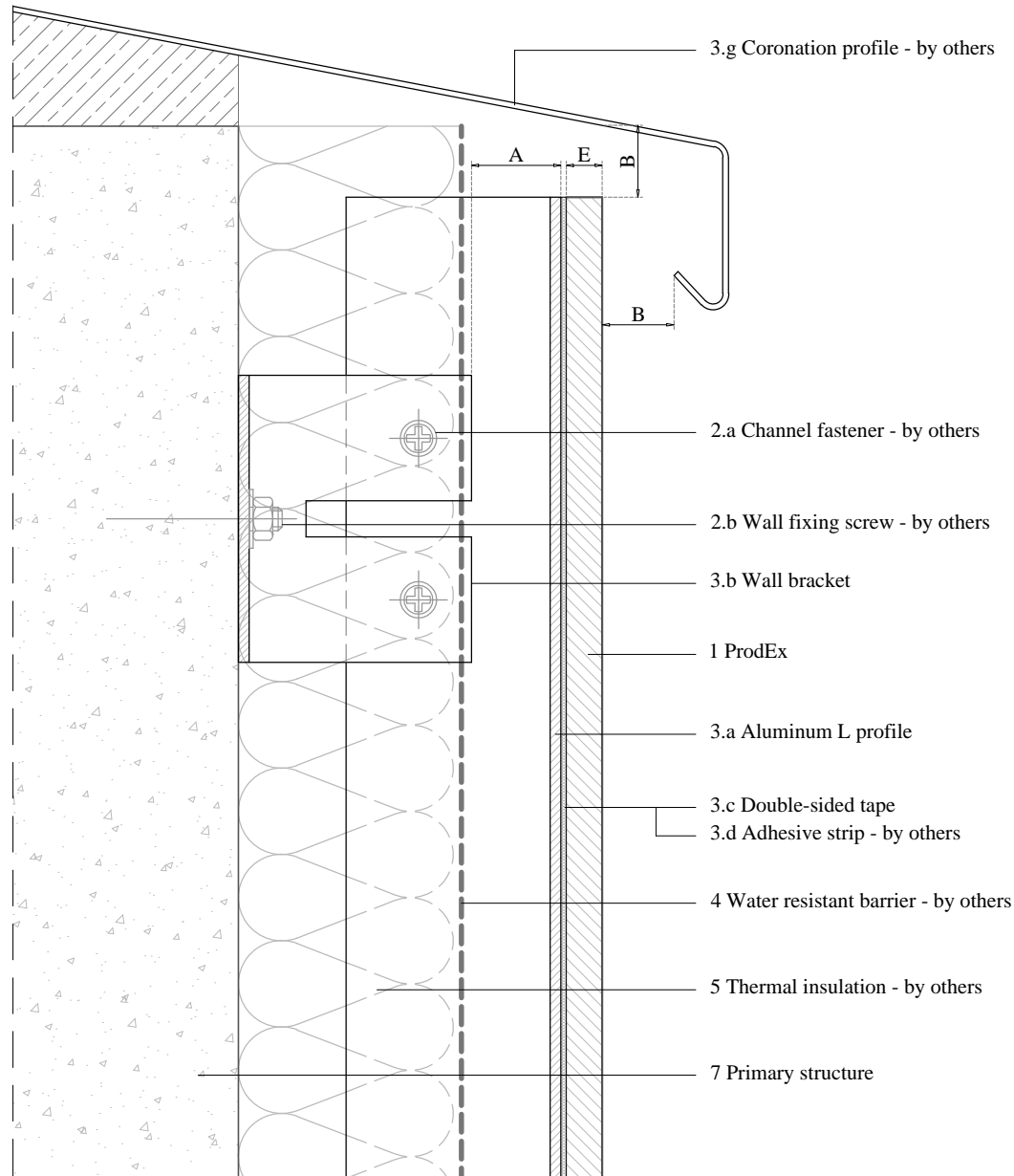
Project

## CONCEALED FASTENING WITH ADHESIVE

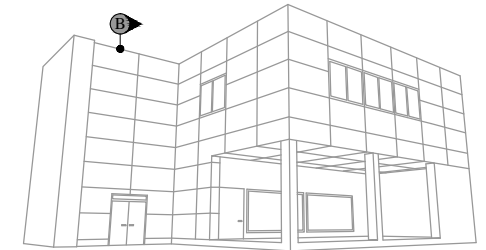
Plan

## DETAIL A BASE VENTILATION

<b>Prodema</b> NATURAL WOOD BEAUTY		Product
		<b>PRODEX</b>
Units	The updated version of this present installation detail can be found on the Prodema web.	
<b>Milimetres (mm)</b>		
Plan code	<b>PREX 2-05-A</b>	Page
		<b>3</b>



E	Panel thickness $\geq 8$ mm
B	Circulation of air $\geq 20$ mm
A	Required min. air chamber $\geq 20$ mm
7	Primary structure
5	Thermal insulation - by others
4	Water resistant barrier - by others
3.g	Coronation profile - by others
3.d	Adhesive strip - by others
3.c	Double-sided tape
3.b	Wall bracket
3.a	Aluminum L profile
3	Profiles
2.b	Wall fixing screw - by others
2.a	Channel fastener - by others
2	Screws
1	ProdEx



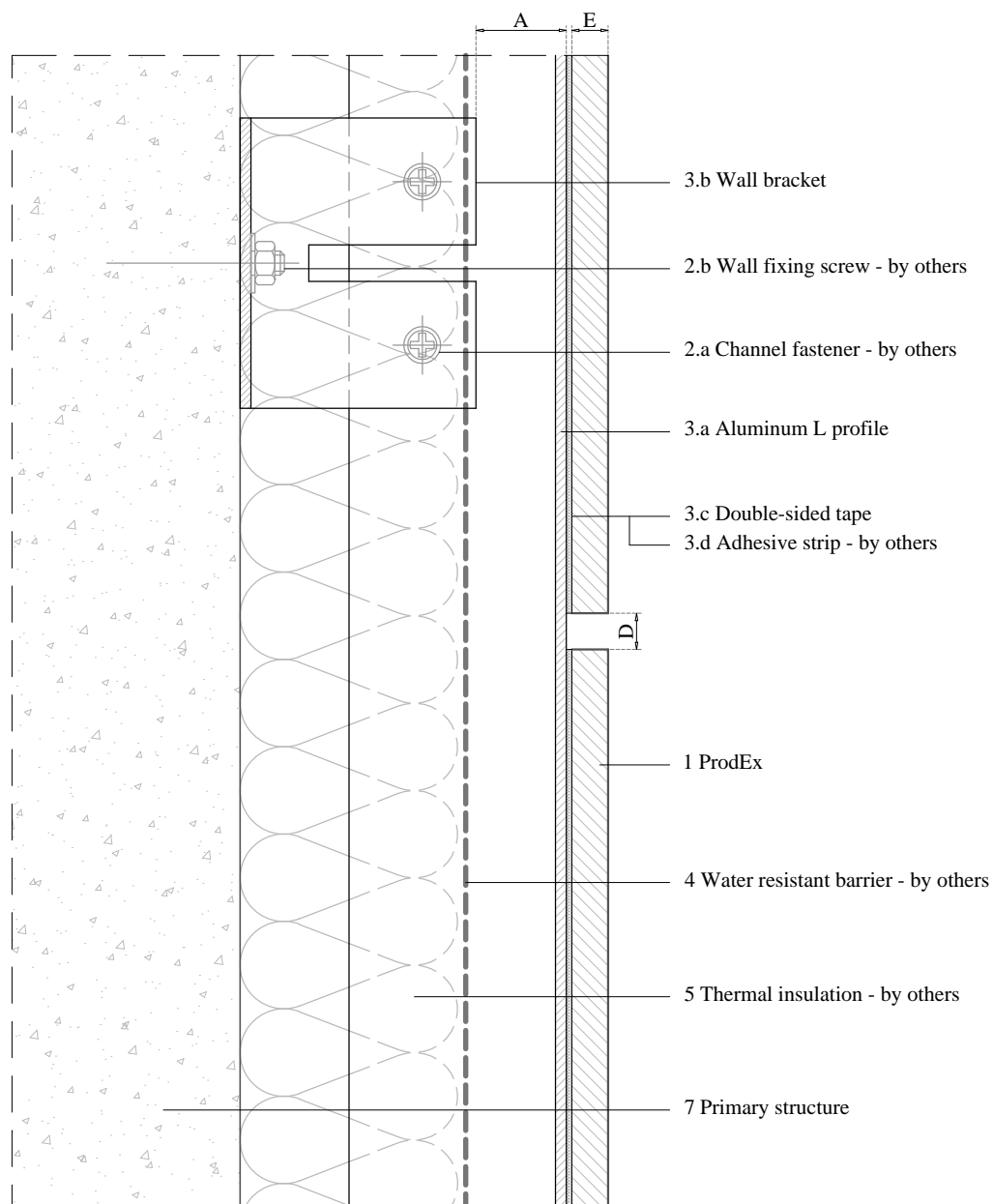
Project

## CONCEALED FASTENING WITH ADHESIVE

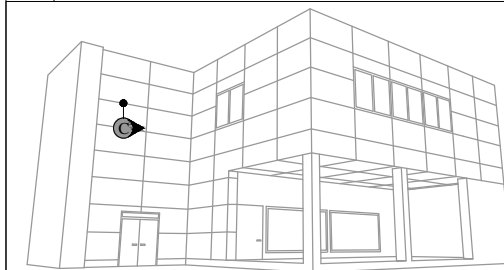
Plan

## DETAIL B HEAD VENTILATION

<b>Prodema</b> NATURAL WOOD BEAUTY		Product
		<b>PRODEX</b>
Units	The updated version of this present installation detail can be found on the Prodema web.	
	<b>Milimetres (mm)</b>	
Plan code	<b>PREX 2-05-B</b>	Page
		<b>4</b>



E	Panel thickness $\geq 8$ mm	
D	Expansion joint 6 - 10 mm	
A	Required min. air chamber $\geq 20$ mm	
7	Primary structure	
5	Thermal insulation - by others	
4	Water resistant barrier - by others	
	3.d	Adhesive strip - by others
	3.c	Double-sided tape
	3.b	Wall bracket
	3.a	Aluminum L profile
		+ primer
3	Profiles	
	2.b	Wall fixing screw - by others
	2.a	Channel fastener - by others
2	Screws	
1	ProdEx	



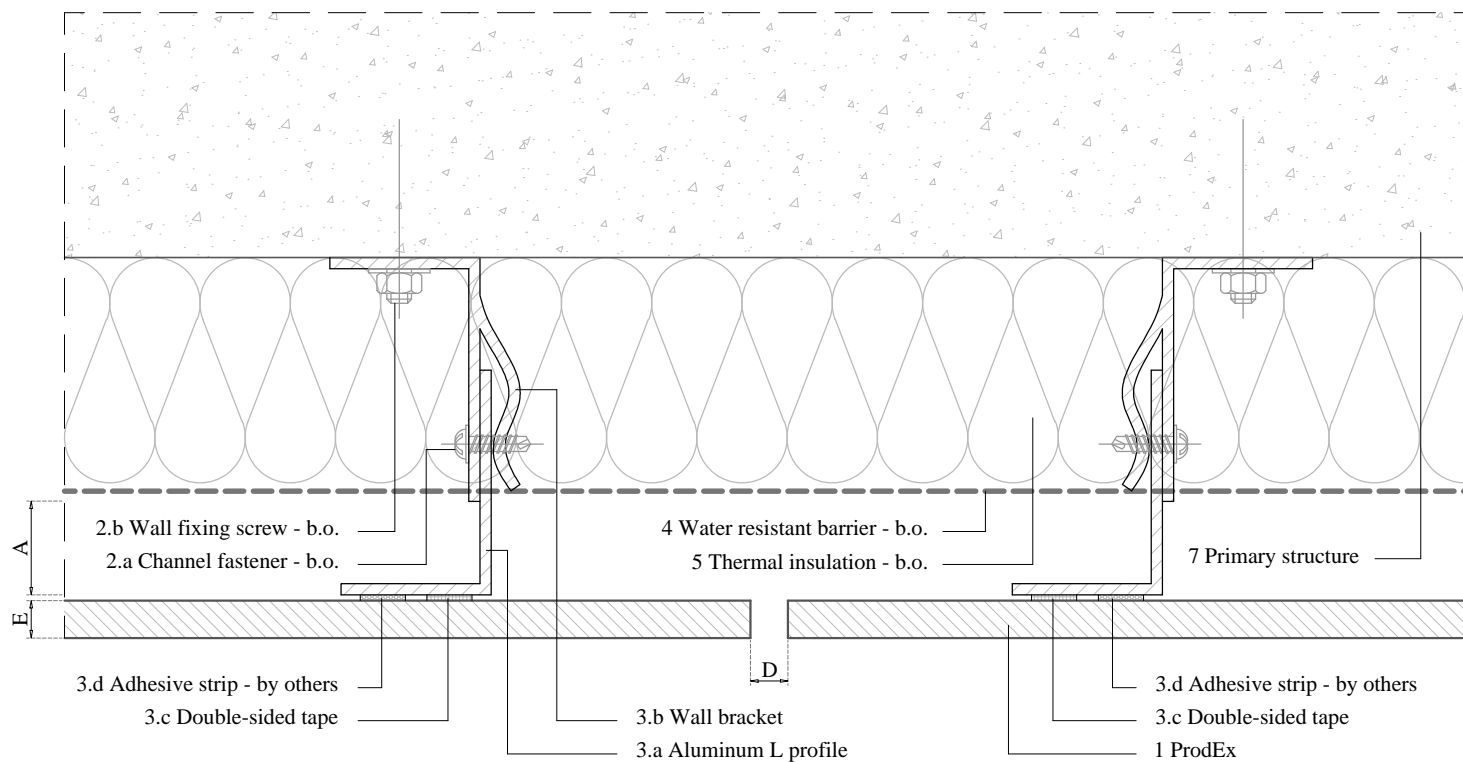
Project

## CONCEALED FASTENING WITH ADHESIVE

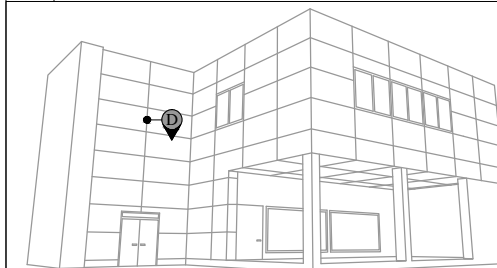
Plan

## DETAIL C TYPICAL HORIZONTAL JOINT

		Product
		<b>PRODEX</b>
Units	The updated version of this present installation detail can be found on the Prodema web.	
<b>Milimetres (mm)</b>		
Plan code		Page
<b>PREX 2-05-C</b>		<b>5</b>



E	Panel thickness $\geq 8$ mm		
D	Expansion joint 6 - 10 mm		
A	Required min. air chamber $\geq 20$ mm		
7	Primary structure		
5	Thermal insulation - by others		
4	Water resistant barrier - by others		
	3.d	Adhesive strip - by others	+ primer
	3.c	Double-sided tape	
	3.b	Wall bracket	
	3.a	Aluminum L profile	
3	Profiles		
	2.b	Wall fixing screw - by others	
	2.a	Channel fastener - by others	
2	Screws		
1	ProdEx		



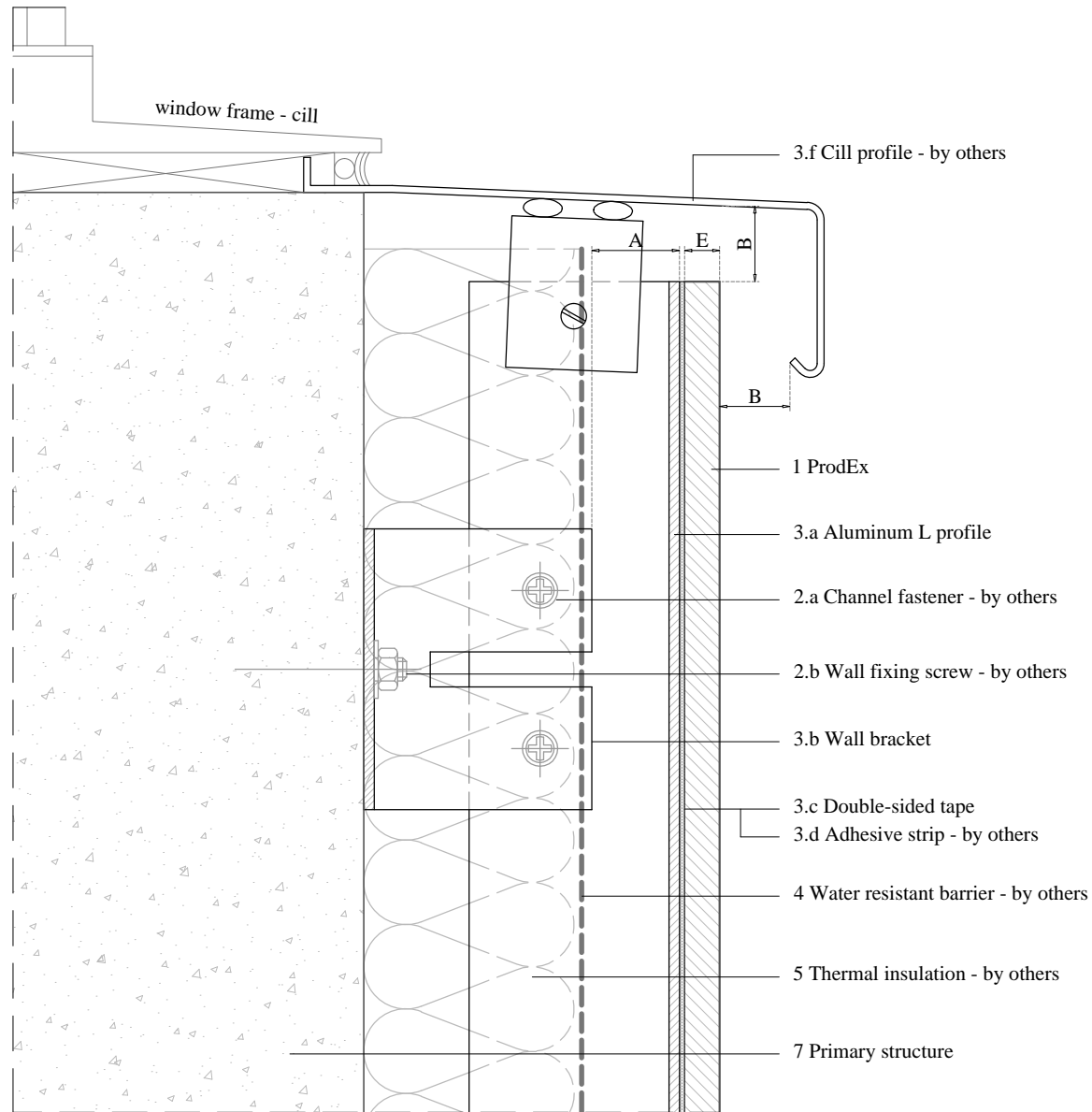
Project

## CONCEALED FASTENING WITH ADHESIVE

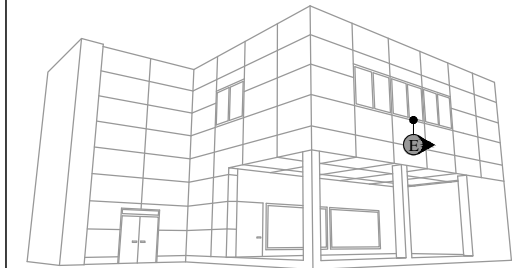
Plan

## DETAIL D TYPICAL VERTICAL JOINT

<b>Prodema</b> NATURAL WOOD BEAUTY		Product
		<b>PRODEX</b>
Units	The updated version of this present installation detail can be found on the Prodema web.	
<b>Milimetres (mm)</b>		
Plan code	<b>PREX 2-05-D</b>	Page
		<b>6</b>



E	Panel thickness $\geq 8$ mm
B	Circulation of air $\geq 20$ mm
A	Required min. air chamber $\geq 20$ mm
7	Primary structure
5	Thermal insulation - by others
4	Water resistant barrier - by others
3.f	Cill profile - by others
3.d	Adhesive strip - by others
3.c	Double-sided tape
3.b	Wall bracket
3.a	Aluminum L profile
3	Profiles
2.b	Wall fixing screw - by others
2.a	Channel fastener - by others
2	Screws
1	ProdEx



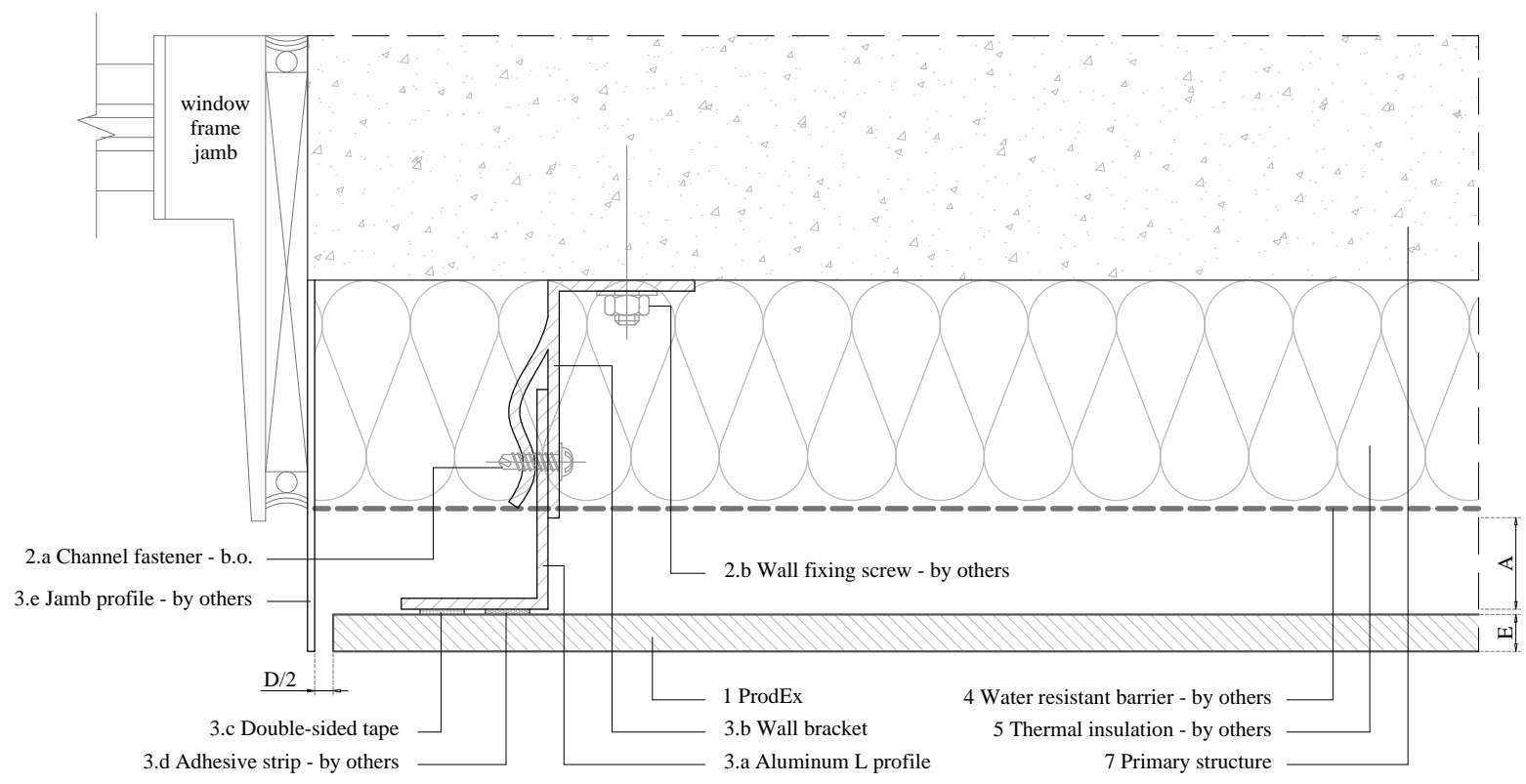
Project

## CONCEALED FASTENING WITH ADHESIVE

Plan

## DETAIL E WINDOW CILL

<b>Prodema</b> NATURAL WOOD BEAUTY		Product
		<b>PRODEX</b>
Units	The updated version of this present installation detail can be found on the Prodema web.	
<b>Milimetres (mm)</b>		
Plan code	<b>PREX 2-05-E</b>	
Page	<b>7</b>	



E	Panel thickness $\geq 8$ mm
D	Expansion joint 6 - 10 mm
A	Required min. air chamber $\geq 20$ mm
7	Primary structure
5	Thermal insulation - by others
4	Water resistant barrier - by others
3.e	Jamb profile - by others
3.d	Adhesive strip - by others
3.c	Double-sided tape
3.b	Wall bracket
3.a	Aluminum L profile
3	Profiles
2.b	Wall fixing screw - by others
2.a	Channel fastener - by others
2	Screws
1	ProdEx



Project

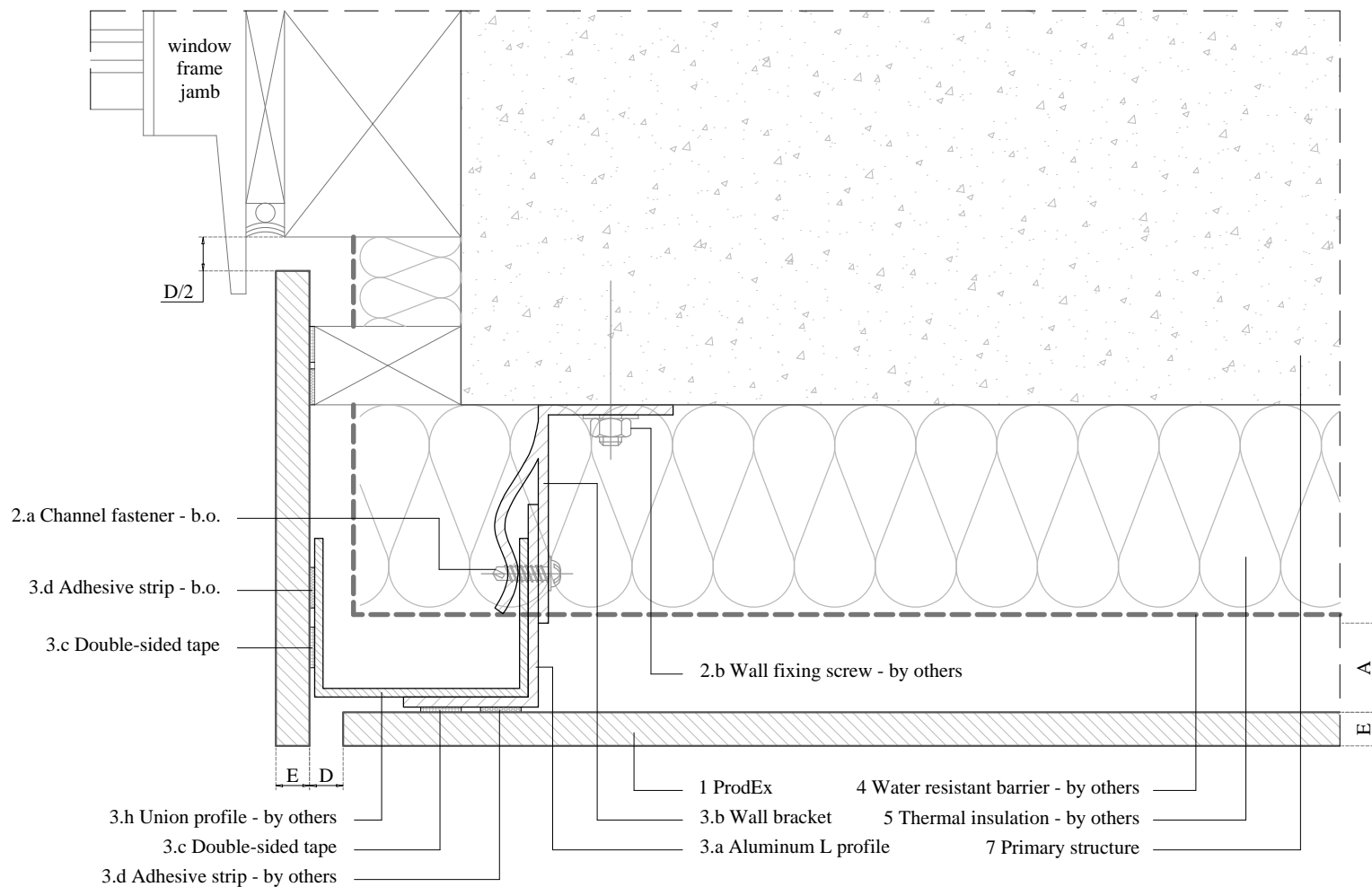
**CONCEALED FASTENING WITH ADHESIVE**

Plan

**DETAIL F WINDOW JAMB**

		Product
		<b>PRODEX</b>
Units	The updated version of this present installation detail can be found on the Prodema web.	
<b>Milimetres (mm)</b>		
Plan code	<b>PREX 2-05-F</b>	Page
		<b>8</b>





E	Panel thickness $\geq 8$ mm		
D	Expansion joint 6 - 10 mm		
A	Required min. air chamber $\geq 20$ mm		
7	Primary structure		
5	Thermal insulation - by others		
4	Water resistant barrier - by others		
	3.h	Union profile - by others	
	3.d	Adhesive strip - by others	+ primer
	3.c	Double-sided tape	
	3.b	Wall bracket	
		3.a	Aluminum L profile
3	Profiles		
	2.b	Wall fixing screw - by others	
	2.a	Channel fastener - by others	
2	Screws		
1	ProdEx		



Project

## CONCEALED FASTENING WITH ADHESIVE

Plan

## DETAIL F WINDOW JAMB

**Prodema**  
NATURAL WOOD BEAUTY

Product

**PRODEX**

Units

**Milimetres (mm)**

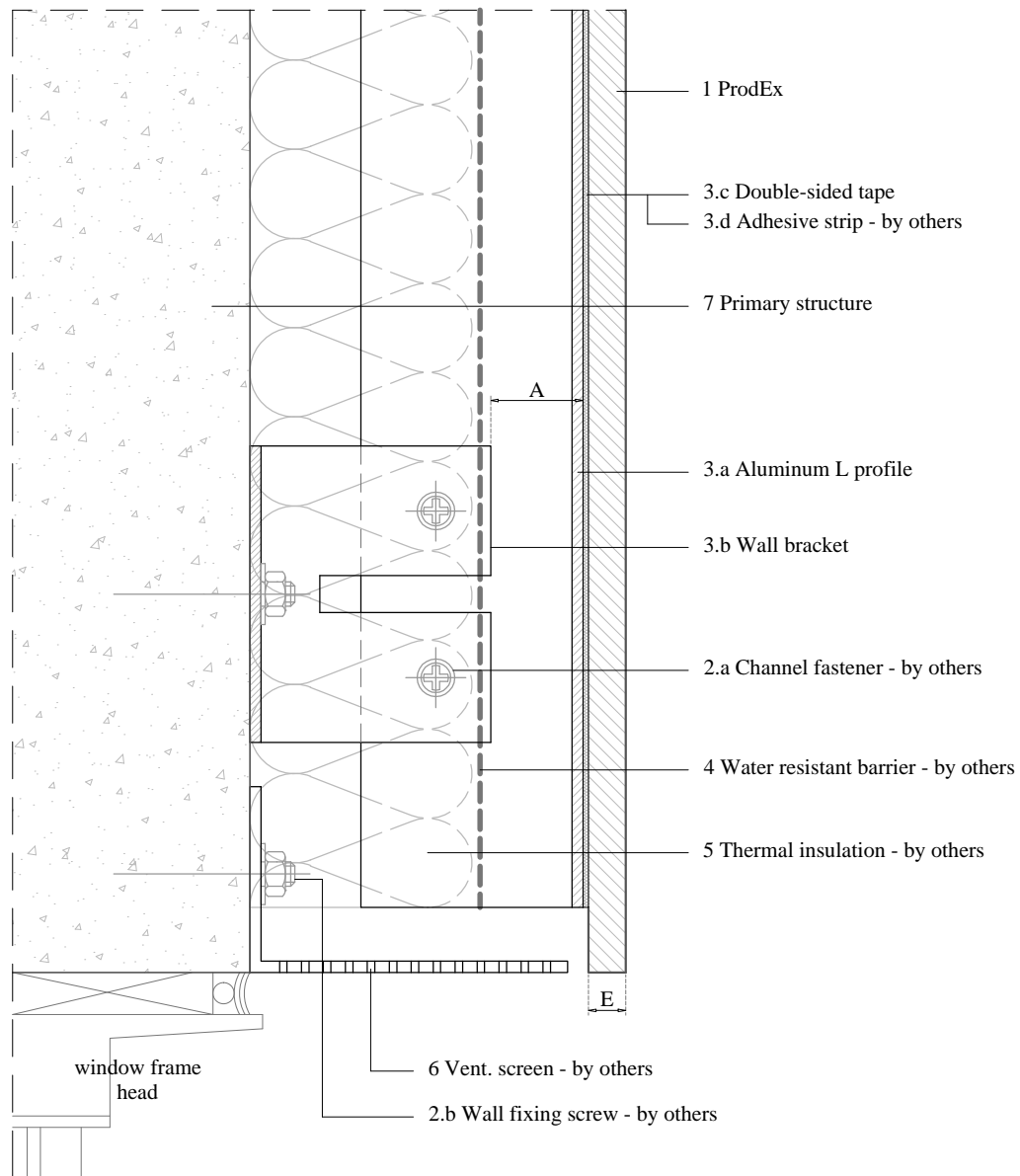
The updated version of this present installation detail can be found on the Prodema web.

Plan code

**PREX 2-05-F**

Page

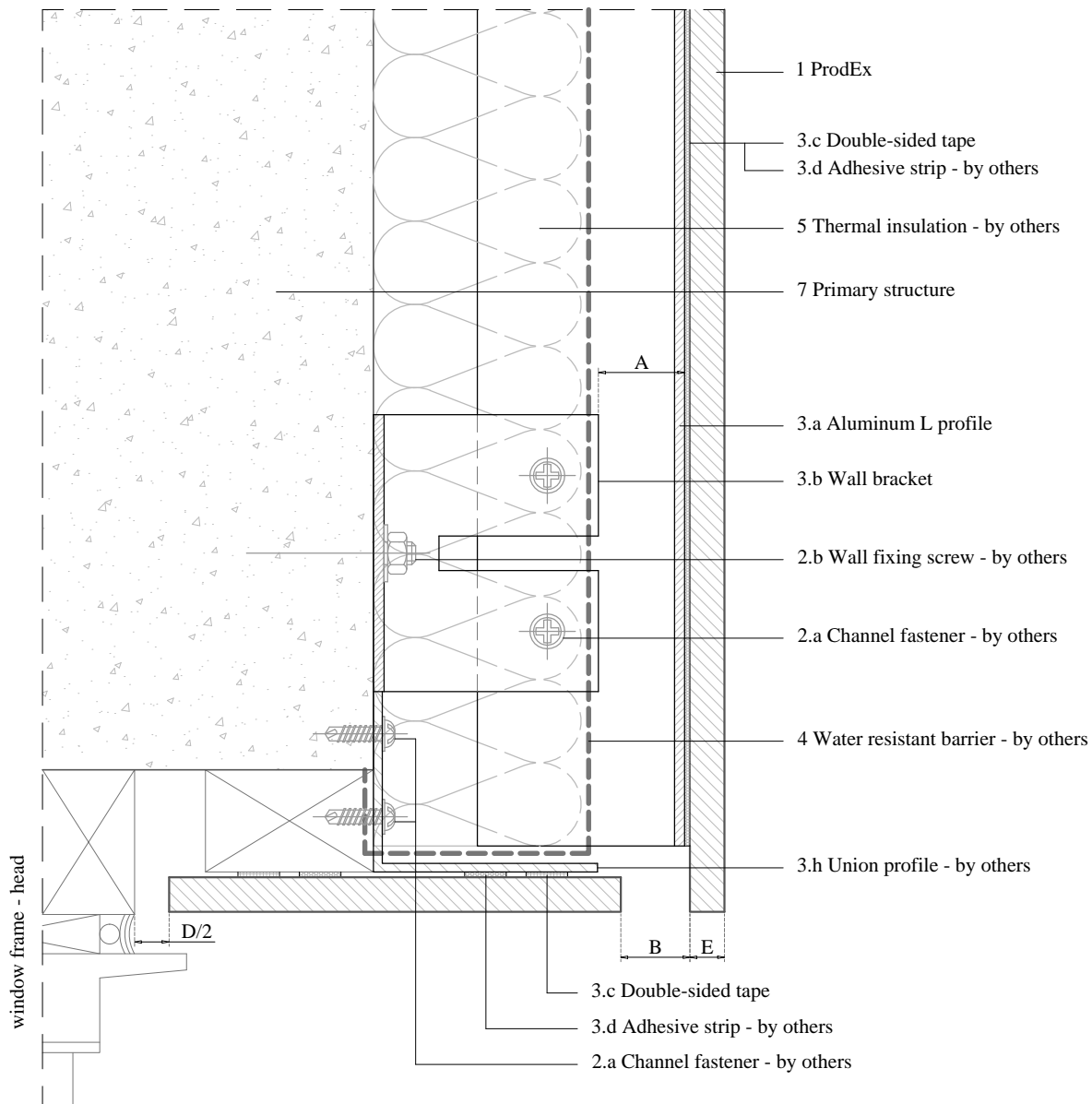
**8**



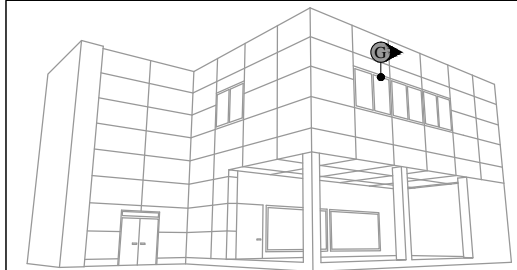
E	Panel thickness $\geq 8$ mm	
A	Required min. air chamber $\geq 20$ mm	
7	Primary structure	
6	Vent. screen - by others	
5	Thermal insulation - by others	
4	Water resistant barrier - by others	
3	3.d	Adhesive strip - by others + primer
	3.c	Double-sided tape
	3.b	Wall bracket
	3.a	Aluminum L profile
3	Profiles	
	2.b	Wall fixing screw - by others
	2.a	Channel fastener - by others
2	Screws	
1	ProdEx	



Project		<b>CONCEALED FASTENING WITH ADHESIVE</b>	
Plan		<b>DETAIL G WINDOW HEAD</b>	
Units		Product	
<b>Milimetres (mm)</b>		<b>Prodema</b> NATURAL WOOD BEAUTY <b>PRODEX</b>	
Plan code		The updated version of this present installation detail can be found on the Prodema web.	
<b>PREX 2-05-G</b>		Page	<b>9</b>



E	Panel thickness $\geq 8$ mm
D	Expansion joint 6 - 10 mm
B	Circulation of air $\geq 20$ mm
A	Required min. air chamber $\geq 20$ mm
7	Primary structure
5	Thermal insulation - by others
4	Water resistant barrier - by others
3.h	Union profile - by others
3.d	Adhesive strip - by others
3.c	Double-sided tape
3.b	Wall bracket
3.a	Aluminum L profile
3	Profiles
2.b	Wall fixing screw - by others
2.a	Channel fastener - by others
2	Screws
1	ProdEx



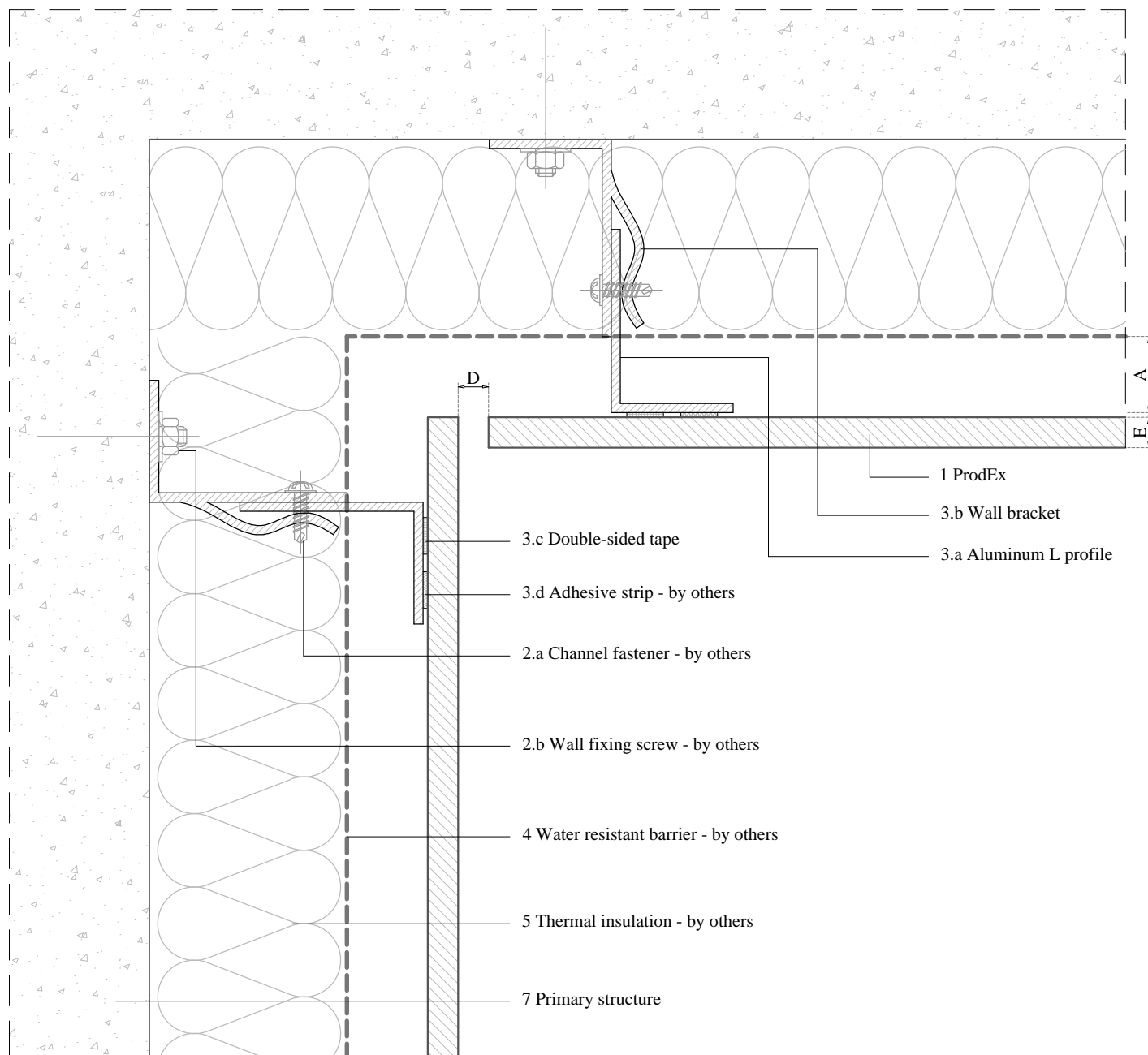
Project

## CONCEALED FASTENING WITH ADHESIVE

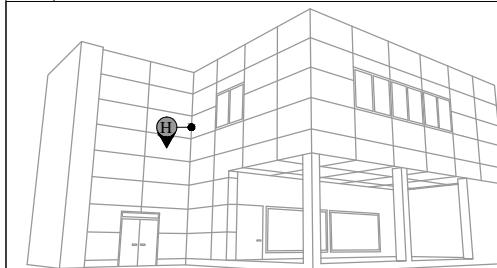
Plan

## DETAIL G WINDOW HEAD

<div> <div> <b>Prodema</b> NATURAL WOOD BEAUTY </div> <div> Product <b>PRODEX</b> </div> </div>	
Units	The updated version of this present installation detail can be found on the Prodema web.
Plan code	Page
<b>PREX 2-05-G</b>	<b>9</b>



E	Panel thickness $\geq 8$ mm		
D	Expansion joint 6 - 10 mm		
A	Required min. air chamber $\geq 20$ mm		
7	Primary structure		
5	Thermal insulation - by others		
4	Water resistant barrier - by others		
	3.d	Adhesive strip - by others	+ primer
	3.c	Double-sided tape	
	3.b	Wall bracket	
	3.a	Aluminum L profile	
3	Profiles		
	2.b	Wall fixing screw - by others	
	2.a	Channel fastener - by others	
2	Screws		
1	ProdEx		



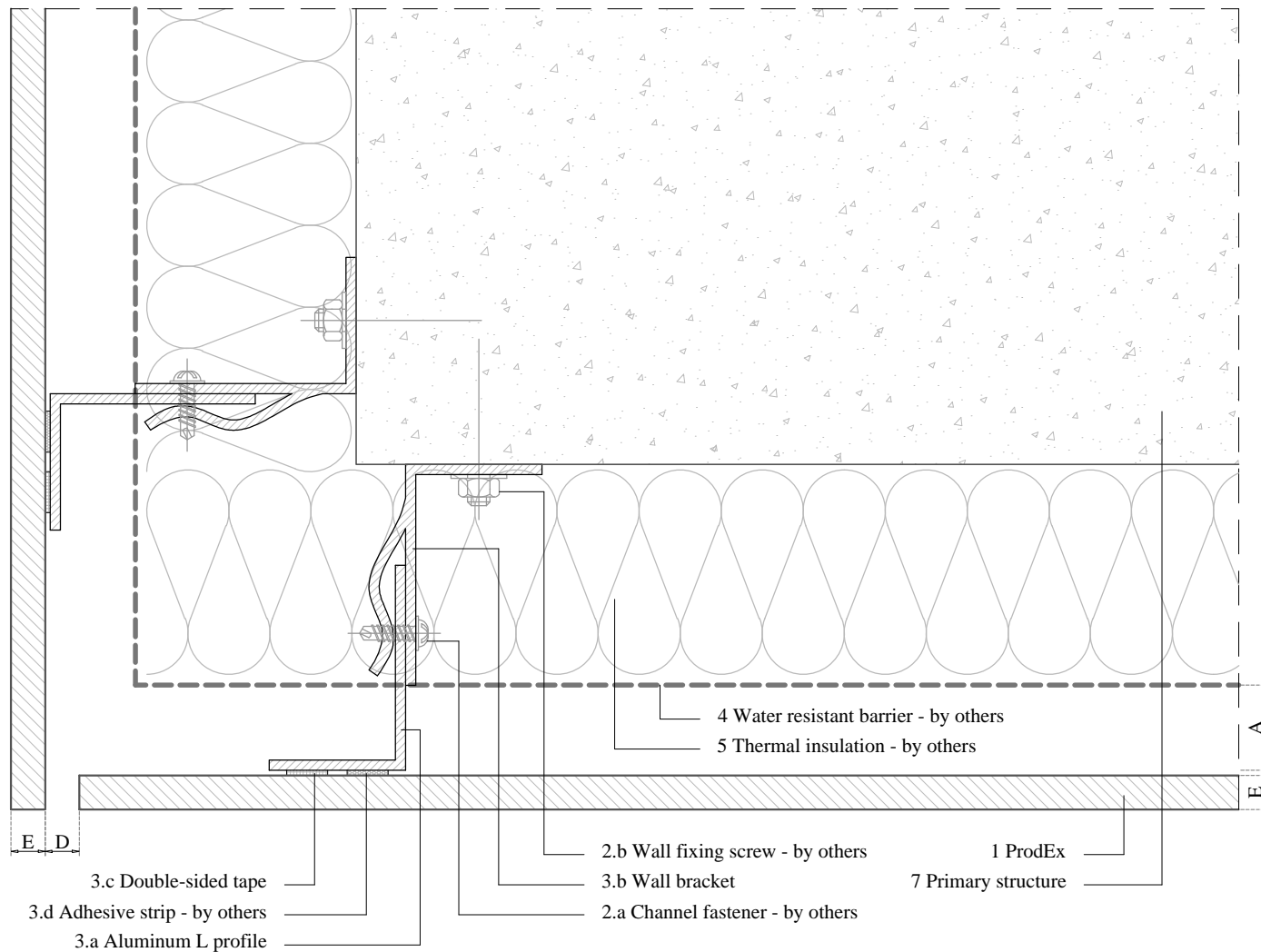
Project

## CONCEALED FASTENING WITH ADHESIVE

Plan

## DETAIL H INSIDE CORNER

<b>Prodema</b> NATURAL WOOD BEAUTY		Product
		<b>PRODEX</b>
Units	The updated version of this present installation detail can be found on the Prodema web.	
	<b>Milimetres (mm)</b>	
Plan code	<b>PREX 2-05-H</b>	Page
		<b>10</b>



E	Panel thickness $\geq 8$ mm		
D	Expansion joint 6 - 10 mm		
A	Required min. air chamber $\geq 20$ mm		
7	Primary structure		
5	Thermal insulation - by others		
4	Water resistant barrier - by others		
	3.d	Adhesive strip - by others	+ primer
	3.c	Double-sided tape	
	3.b	Wall bracket	
	3.a	Aluminum L profile	
3	Profiles		
	2.b	Wall fixing screw - by others	
	2.a	Channel fastener - by others	
2	Screws		
1	ProdEx		



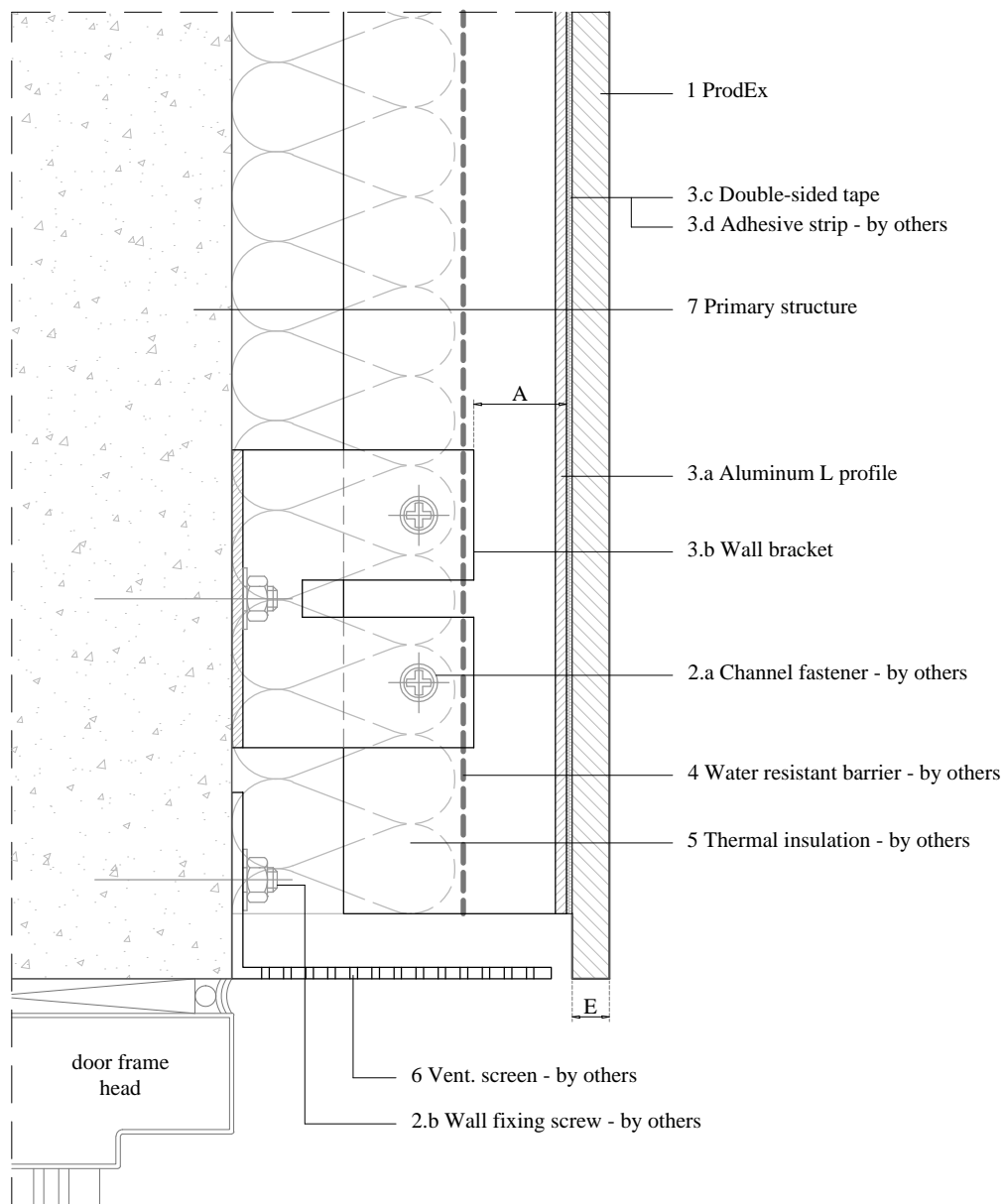
Project

## CONCEALED FASTENING WITH ADHESIVE

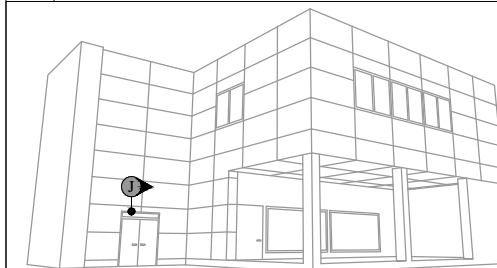
Plan

## DETAIL I OUTSIDE CORNER

<b>Prodema</b> NATURAL WOOD BEAUTY		Product
		<b>PRODEX</b>
Units	The updated version of this present installation detail can be found on the Prodema web.	
<b>Milimetres (mm)</b>		
Plan code	Page	
<b>PREX 2-05-I</b>	<b>11</b>	



E	Panel thickness $\geq 8$ mm		
A	Required min. air chamber $\geq 20$ mm		
7	Primary structure		
6	Vent. screen - by others		
5	Thermal insulation - by others		
4	Water resistant barrier - by others		
	3.d	Adhesive strip - by others	+ primer
	3.c	Double-sided tape	
	3.b	Wall bracket	
	3.a	Aluminum L profile	
3	Profiles		
	2.b	Wall fixing screw - by others	
	2.a	Channel fastener - by others	
2	Screws		
1	ProdEx		



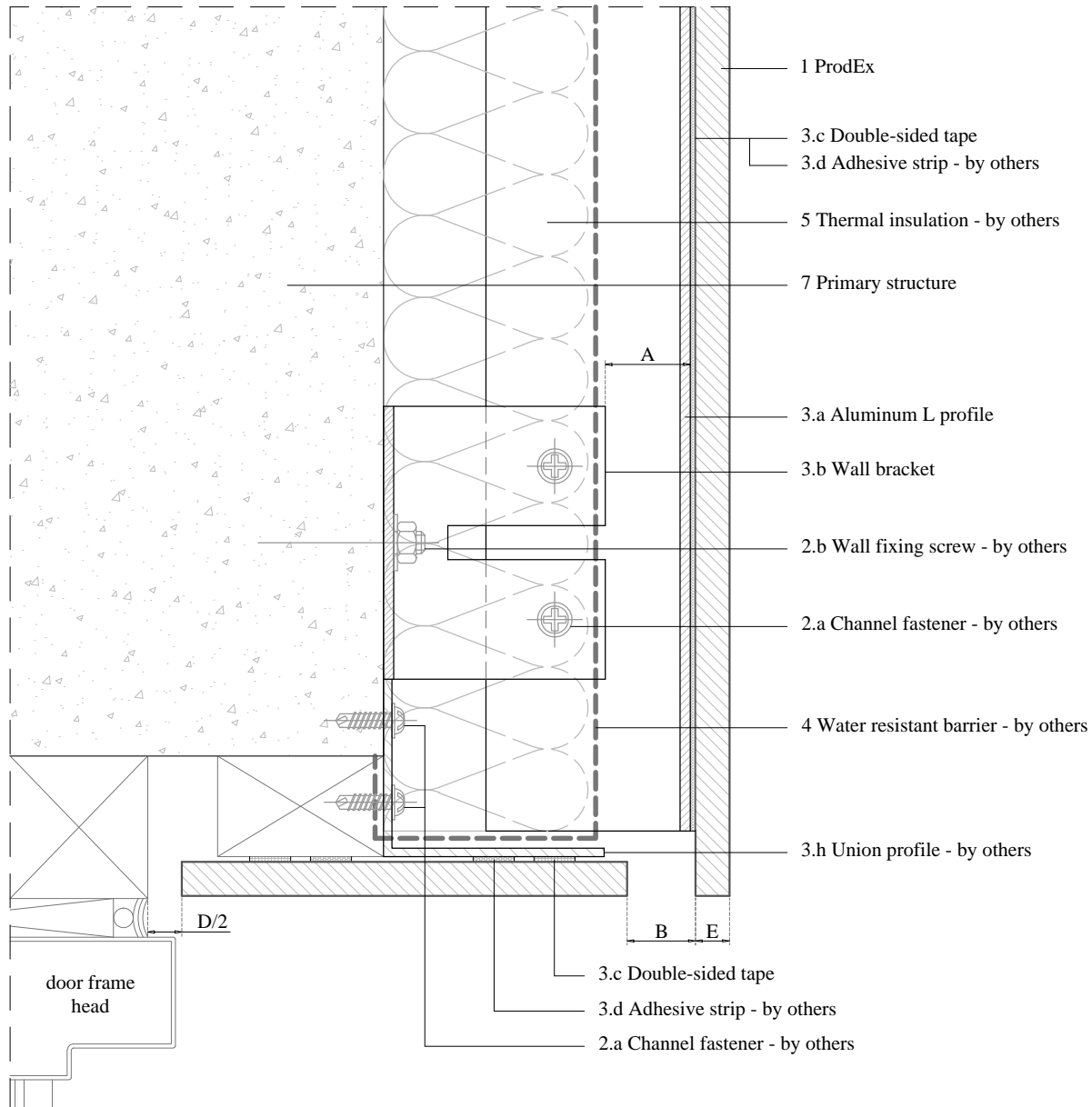
Project

## CONCEALED FASTENING WITH ADHESIVE

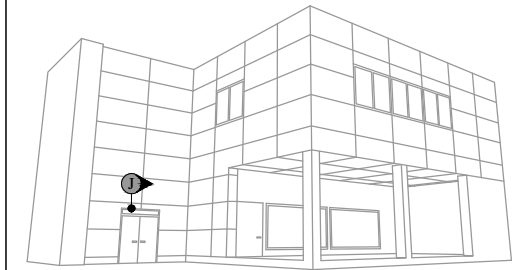
Plan

## DETAIL J DOOR HEAD

<b>Prodema</b> NATURAL WOOD BEAUTY		Product
		<b>PRODEX</b>
Units	The updated version of this present installation detail can be found on the Prodema web.	
	<b>Milimetres (mm)</b>	
Plan code	<b>PREX 2-05-J</b>	Page
		<b>12</b>



E	Panel thickness $\geq 8$ mm
D	Expansion joint 6 - 10 mm
B	Circulation of air $\geq 20$ mm
A	Required min. air chamber $\geq 20$ mm
7	Primary structure
5	Thermal insulation - by others
4	Water resistant barrier - by others
3.h	Union profile - by others
3.d	Adhesive strip - by others
3.c	Double-sided tape
3.b	Wall bracket
3.a	Aluminum L profile
3	Profiles
2.b	Wall fixing screw - by others
2.a	Channel fastener - by others
2	Screws
1	ProdEx



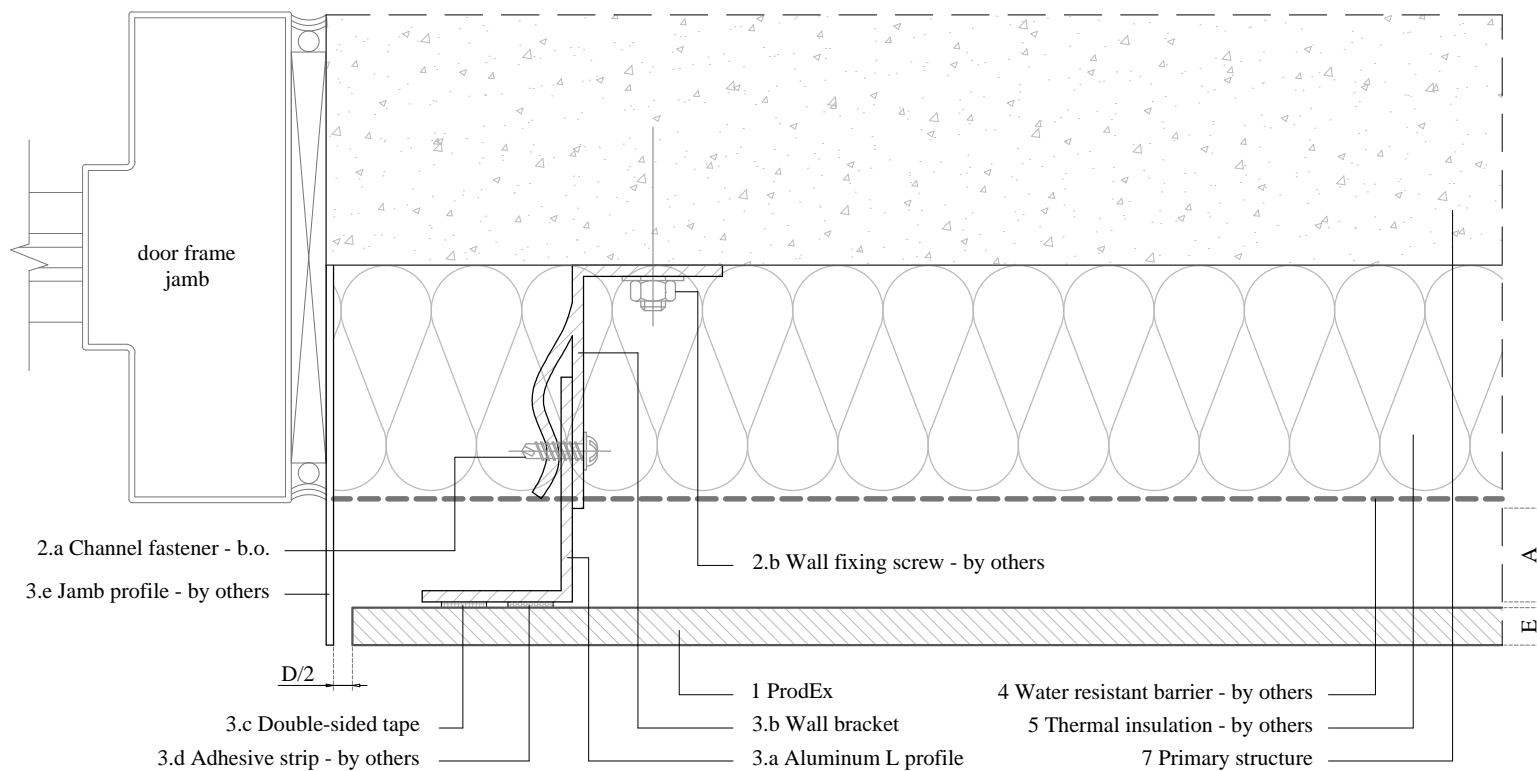
Project

## CONCEALED FASTENING WITH ADHESIVE

Plan

## DETAIL J DOOR HEAD

<b>Prodema</b> NATURAL WOOD BEAUTY		Product
		<b>PRODEX</b>
Units	The updated version of this present installation detail can be found on the Prodema web.	
	<b>Milimetres (mm)</b>	
Plan code	<b>PREX 2-05-J</b>	Page
		<b>12</b>



E	Panel thickness $\geq 8$ mm		
D	Expansion joint 6 - 10 mm		
A	Required min. air chamber $\geq 20$ mm		
7	Primary structure		
5	Thermal insulation - by others		
4	Water resistant barrier - by others		
	3.e	Jamb profile - by others	
	3.d	Adhesive strip - by others	
	3.c	Double-sided tape	
	3.b	Wall bracket	
	3.a	Aluminum L profile	
3	Profiles		
	2.b	Wall fixing screw - by others	
	2.a	Channel fastener - by others	
2	Screws		
1	ProdEx		



Project

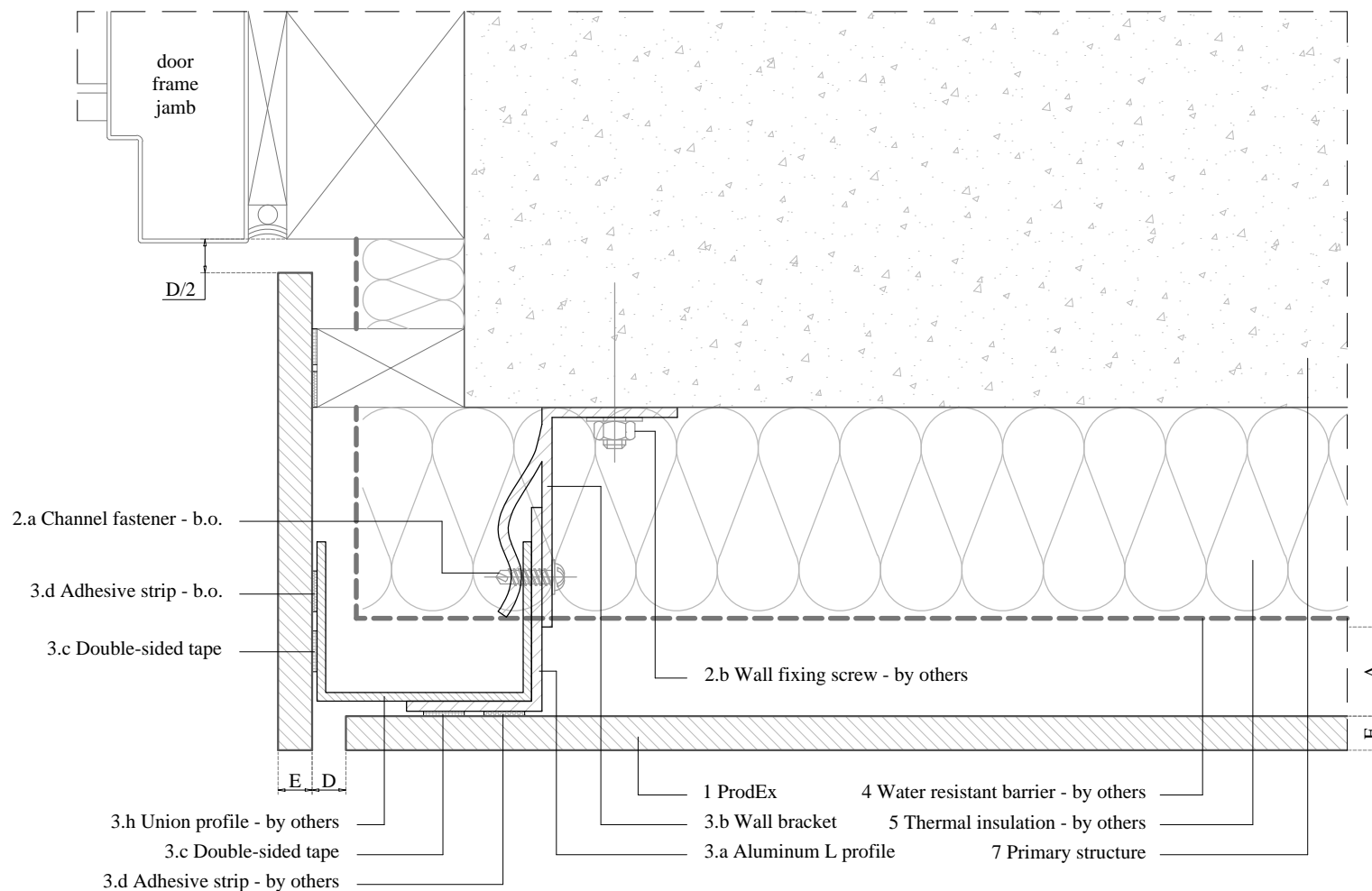
## CONCEALED FASTENING WITH ADHESIVE

Plan

## DETAIL K DOOR JAMB

<b>Prodema</b> NATURAL WOOD BEAUTY		Product
		<b>PRODEX</b>
Units	The updated version of this present installation detail can be found on the Prodema web.	
<b>Milimetres (mm)</b>		
Plan code	<b>PREX 2-05-K</b>	Page
		<b>13</b>





E	Panel thickness $\geq 8$ mm		
D	Expansion joint 6 - 10 mm		
A	Required min. air chamber $\geq 20$ mm		
7	Primary structure		
5	Thermal insulation - by others		
4	Water resistant barrier - by others		
	3.h	Union profile - by others	
	3.d	Adhesive strip - by others	+ primer
	3.c	Double-sided tape	
	3.b	Wall bracket	
	3.a	Aluminum L profile	
	3	Profiles	
	2.b	Wall fixing screw - by others	
	2.a	Channel fastener - by others	
2	Screws		
1	ProdEx		



Project

## CONCEALED FASTENING WITH ADHESIVE

Plan

## DETAIL K DOOR JAMB

**Prodema**  
NATURAL WOOD BEAUTY

Product

**PRODEX**

Units

**Milimetres (mm)**

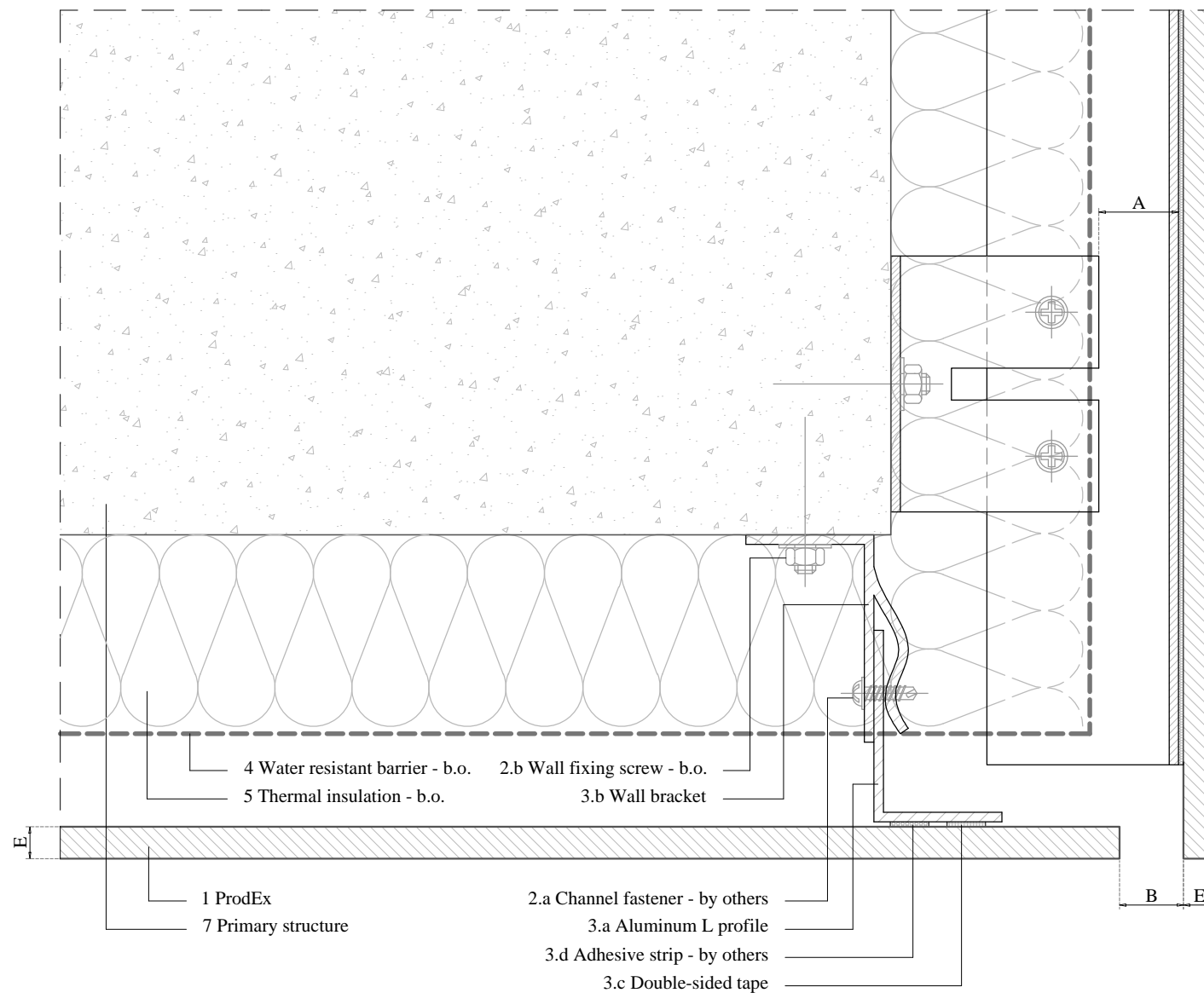
The updated version of this present installation detail can be found on the Prodema web.

Plan code

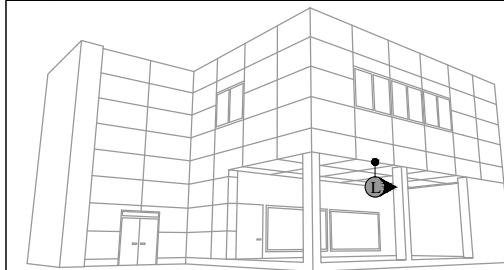
**PREX 2-05-K**

Page

**13**



E	Panel thickness $\geq 8$ mm		
B	Circulation of air $\geq 20$ mm		
A	Required min. air chamber $\geq 20$ mm		
7	Primary structure		
5	Thermal insulation - by others		
4	Water resistant barrier - by others		
	3.d	Adhesive strip - by others	+ primer
	3.c	Double-sided tape	
	3.b	Wall bracket	
	3.a	Aluminum L profile	
3	Profiles		
	2.b	Wall fixing screw - by others	
	2.a	Channel fastener - by others	
2	Screws		
1	ProdEx		



Project

## CONCEALED FASTENING WITH ADHESIVE

Plan

## DETAIL L TRANSVERSAL SOFFIT

**Prodema**  
NATURAL WOOD BEAUTY

Product

**PRODEX**

Units

**Milimetres (mm)**

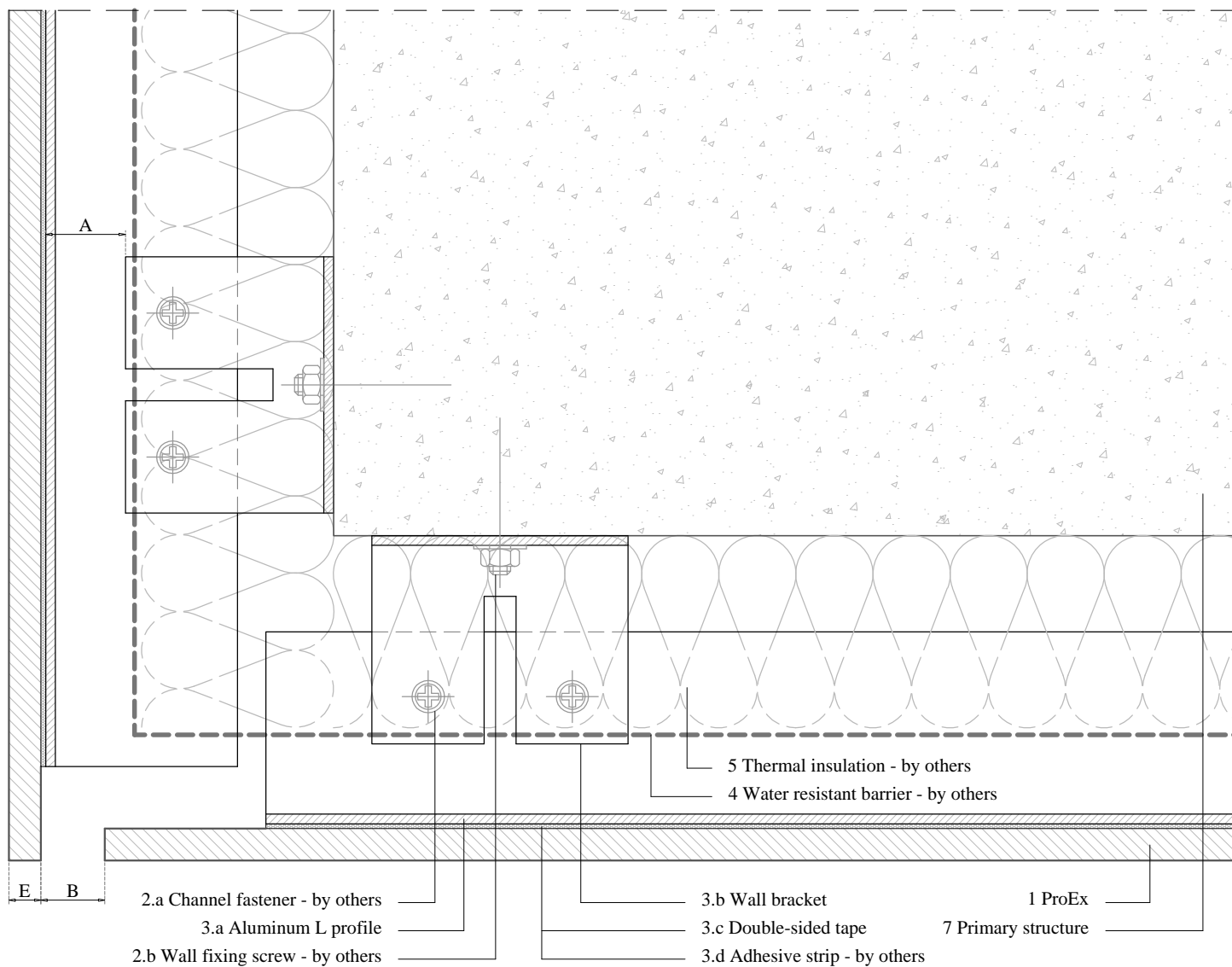
The updated version of this present installation detail can be found on the Prodema web.

Plan code

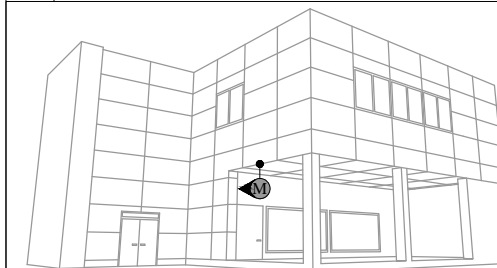
**PREX 2-05-L**

Page

**14**



E	Panel thickness $\geq 8$ mm	
B	Circulation of air $\geq 20$ mm	
A	Required min. air chamber $\geq 20$ mm	
7	Primary structure	
5	Thermal insulation - by others	
4	Water resistant barrier - by others	
	3.d	Adhesive strip - by others
	3.c	Double-sided tape
	3.b	Wall bracket
	3.a	Aluminum L profile
3	Profiles	
	2.b	Wall fixing screw - by others
	2.a	Channel fastener - by others
2	Screws	
1	ProdEx	



Project

## CONCEALED FASTENING WITH ADHESIVE

Plan

## DETAIL M LONGITUDINAL SOFFIT

**Prodema**  
NATURAL WOOD BEAUTY

Product

**PRODEX**

Units

**Milimetres (mm)**

The updated version of this present installation detail can be found on the Prodema web.

Plan code

**PREX 2-05-M**

Page

**15**