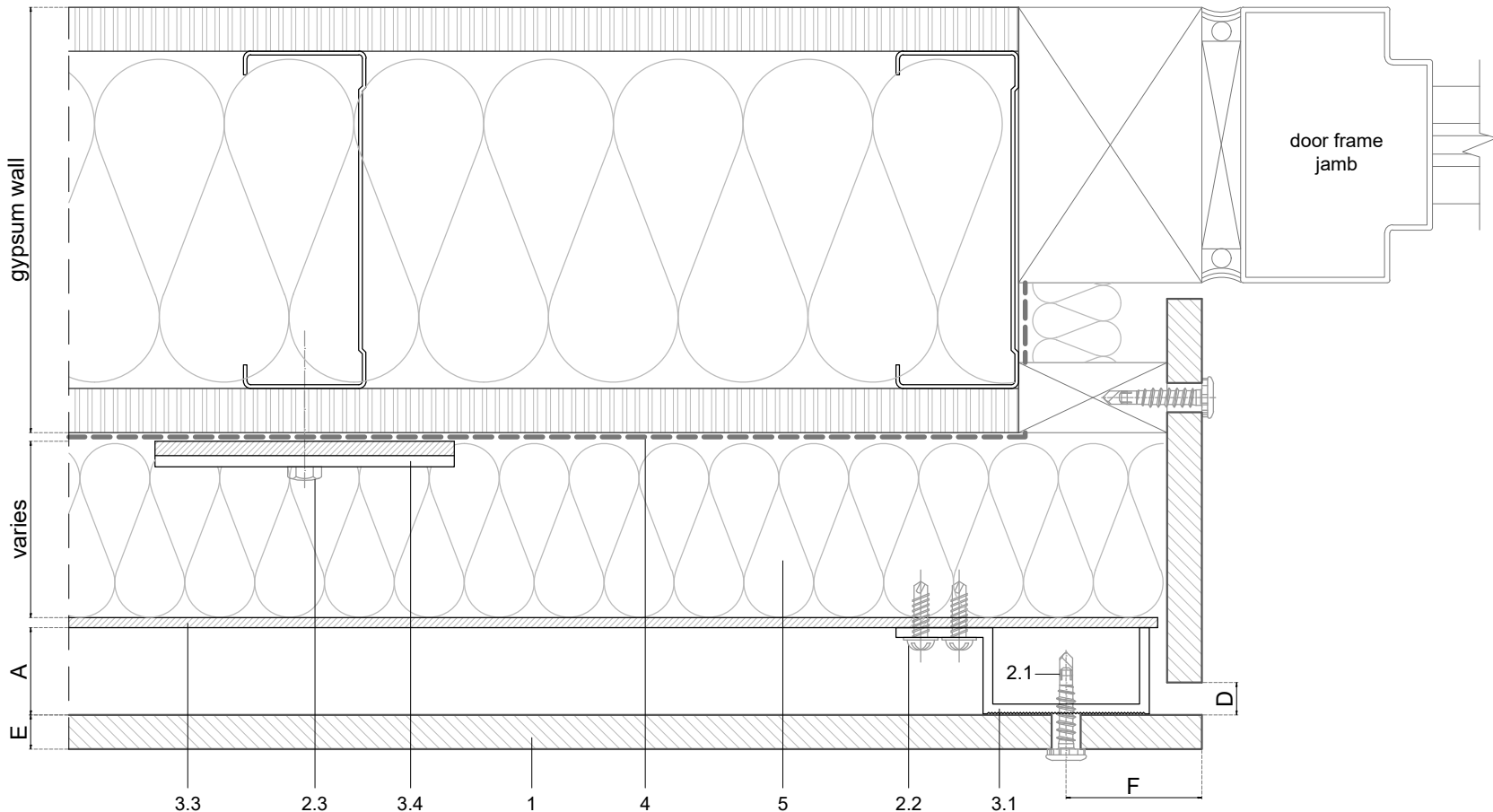


A	Required min. air chamber $\geq 3/4"$ (20mm)
B	Circulation of air $\geq 3/4"$ (20mm)
D	Expansion joint $1/4" - 3/8"$ (6-10mm)
E	Panel thickness $\geq 1/4"$ (6.4mm)
F	Distance from the screws to the panel edges $3/4" - 1\ 1/2"$ (20-40mm)



Measures: inch

<div>PARKLEX PRODEMA</div> <div>www.parklexprodema.com</div>	PRODUCT  GRCLAD	SYSTEM  EXPOSED SCREW FIXING ON ALUMINIUM NFPA 285	DRAWN BY  Mikel Maritxalar	DATE  02/2024
	PLAN#  GRC1-01-C-K2	TITLE  DETAIL K-K' // DOOR JAMB 2	APPROVED BY  Maialen Irastorza	PAGE  19 / 21