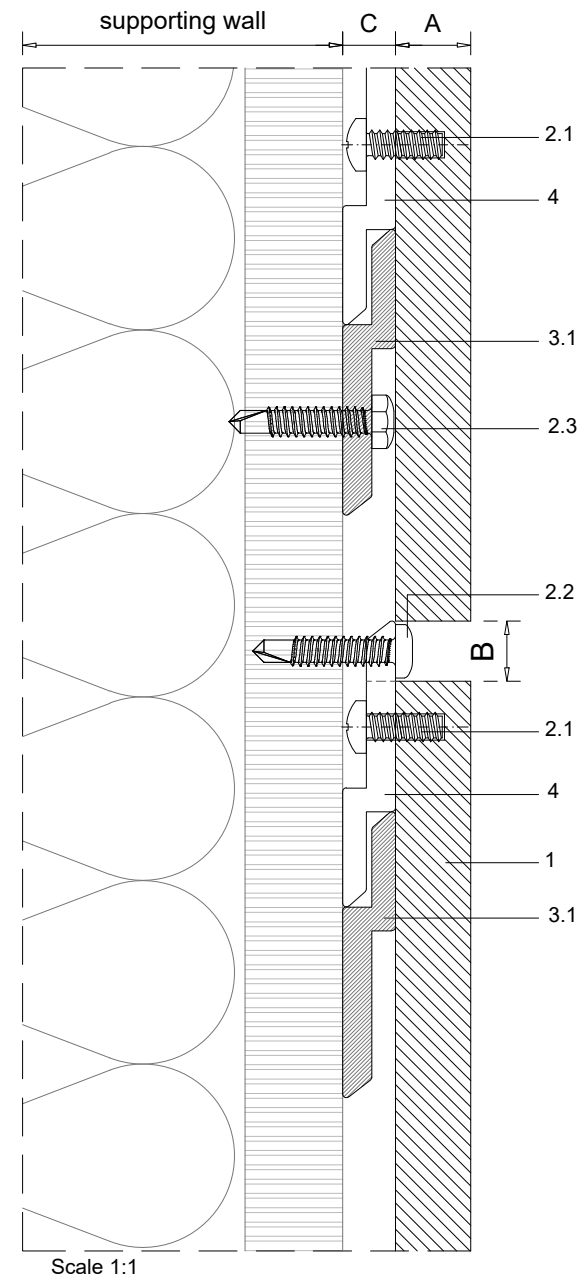
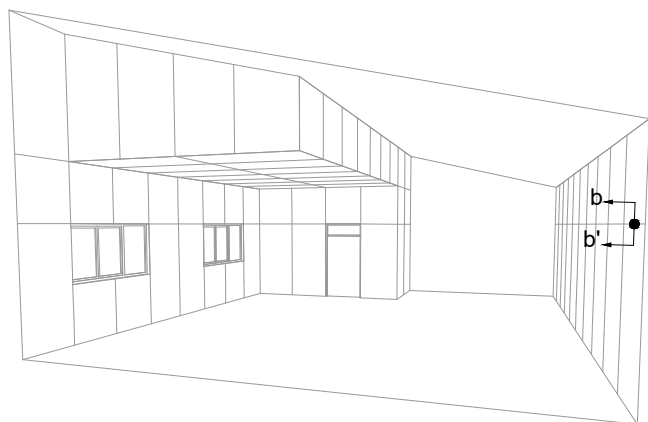


1	NATURHARDPANEL
2	Screws
2.1	Panel screw - on the rear of the panel
2.2	Clip fixing screw*
2.3	Wall fixing screw - by others
3	Profiles
3.1	Interior hanging rail
4	Interior hanging hook for walls and ceilings

A	Panel thickness 5/16" (8mm)
B	Expansion joint 5/16" (8mm)
C	Chamber depth min. 9/32" (7mm)
D	Top expansion joint 3/4" (20mm)

* PARKLEXPRODEMA offers fixing screw for metal and wood substrates



Scale 1:1

Measures: inch

Measurements in inches are approximate. Real measurements in mm.

PARKLEX PRODEMA
www.parklexprodema.com

PRODUCT	NATURHARDPANEL	SYSTEM	INTERIOR HANGING HOOK SYSTEM FOR WALLS AND CEILINGS	DRAWN BY	Joseba Salbide	DATE	04/2023
PLAN#	NH1-05-B	TITLE	DETAIL B-B' // HORIZONTAL JOINT	APPROVED BY	Maialen Irastorza	PAGE	5 / 17