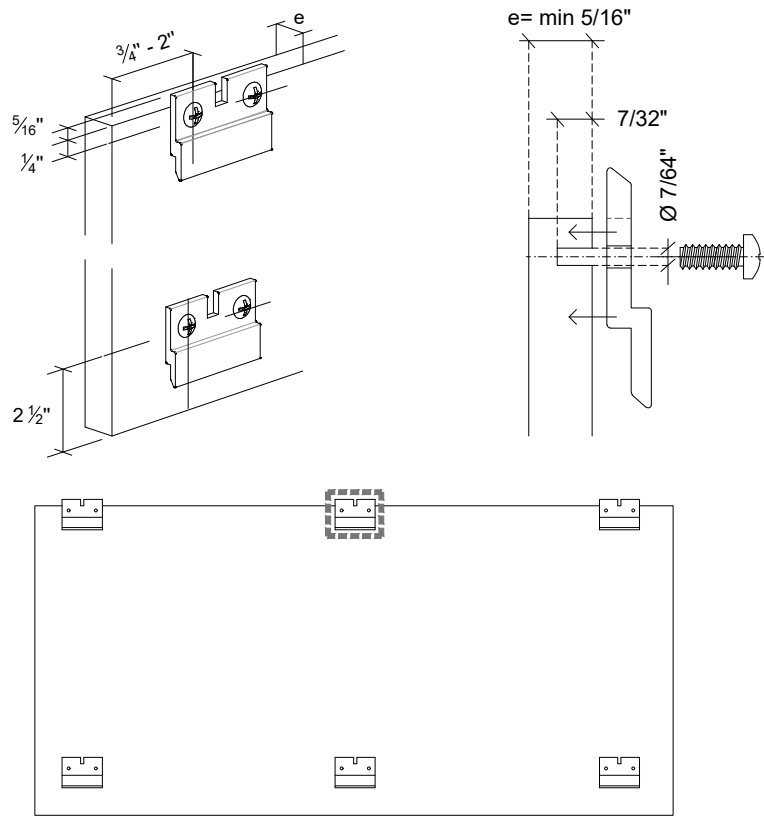


There are two options for locating the hooks depending if the panels will be installed on ceilings or walls.

On ceilings

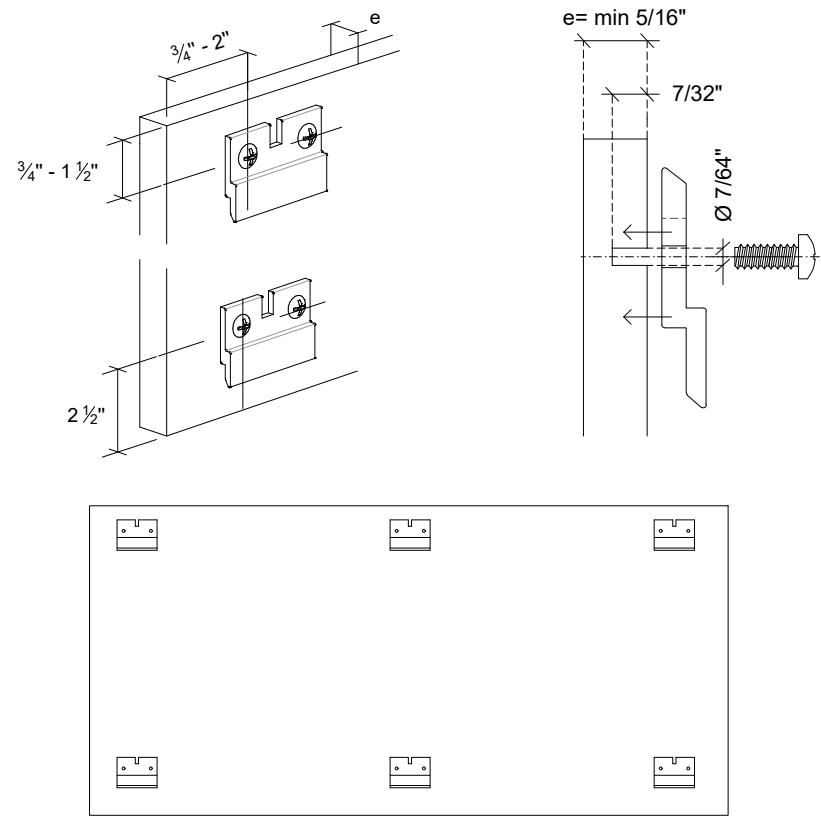
Parklex Prodema recommends to fasten the hooks at the back subframe when panels are to be installed on ceilings so it prevents pieces from falling down. This can only be achieved by placing the hooks at the edge of the panel, as shown on the image below.



At least one fixed point per panel

On walls

On walls the hooks can be placed either at the edge or on the inner part of the panel, as shown on the image below.



Measurements in inches are approximated. Real measurements in mm.

FIXING DETAIL MEASURES: INCH & MM

PARKLEX PRODEMA www.parklexprodema.com	PRODUCT NATURHARDPANEL	SYSTEM INTERIOR HANGING HOOK SYSTEM FOR WALLS AND CEILINGS	DRAWN BY Joseba Salbide	DATE 04/2023
	PLAN# NH1-05-H.L.	TITLE HOOK LOCATION	APPROVED BY Maialen Irastorza	PAGE 2 / 17