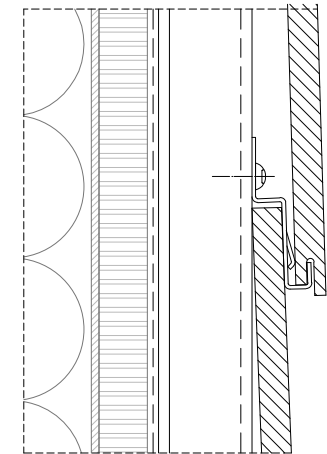
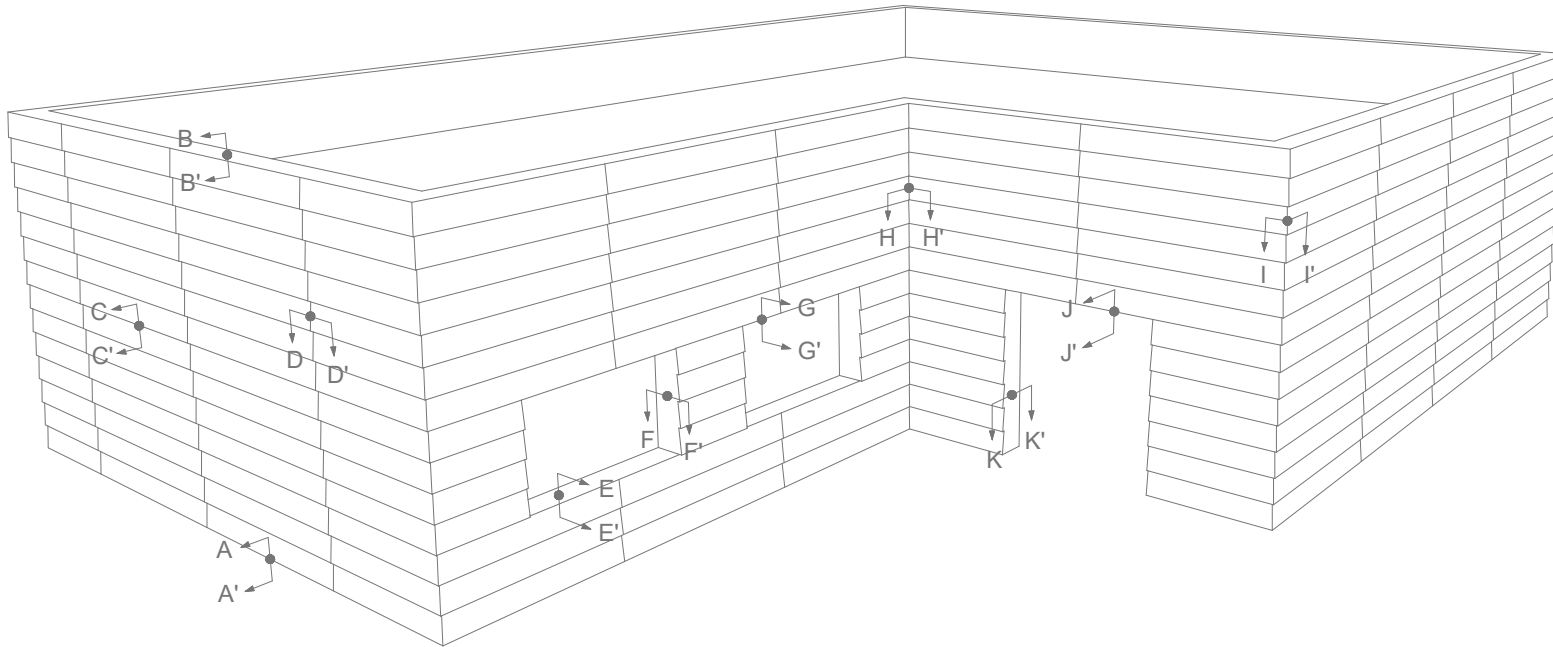


DO NOT OVERTIGHTEN THE SCREW!

Torque recommendations for SX3 screw:

5Nm to fasten the panel on a 7/64" thick aluminum channel



FIXING DETAIL MEASURES: INCH

Measurements in inches are approximated. Real measurements in mm.

The updated version of this present installation detail can be found on the PARKLEX PRODEMA web.
Panel sizes and maximum distances in technical catalogue.

A-A' FAÇADE BASE	G-G' WINDOW HEAD
B-B' PARAPET CAP	H-H' INSIDE CORNER (OPEN JOINT)
C-C' HORIZONTAL JOINT	I-I' OUTSIDE CORNER (OPEN JOINT)
D-D' VERTICAL JOINT	J-J' DOOR HEAD
E-E' WINDOW SILL	K-K' DOOR JAMB
F-F' WINDOW JAMB	

PARKLEX PRODEMA
www.parklexprodema.com

PRODUCT NATURCLAD	SYSTEM LAP SIDING SYSTEM (METALLIC FRAME) WITH BACKING PLATE	DRAWN BY Joseba Salbide	DATE 01/2022
PLAN# NC1-04-A-G.P.	TITLE GENERAL PERSPECTIVE	APPROVED BY Maialen Irastorza	PAGE 1 / 12