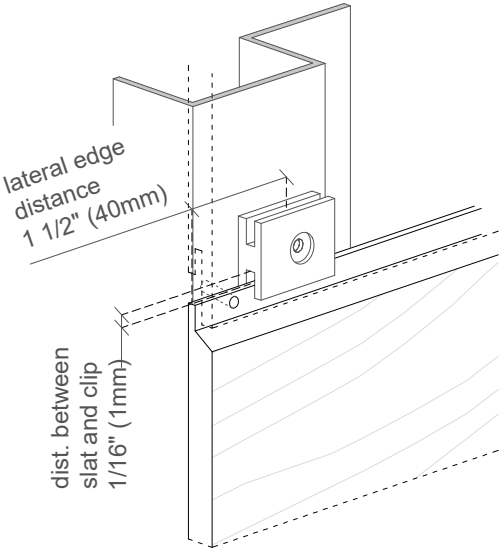
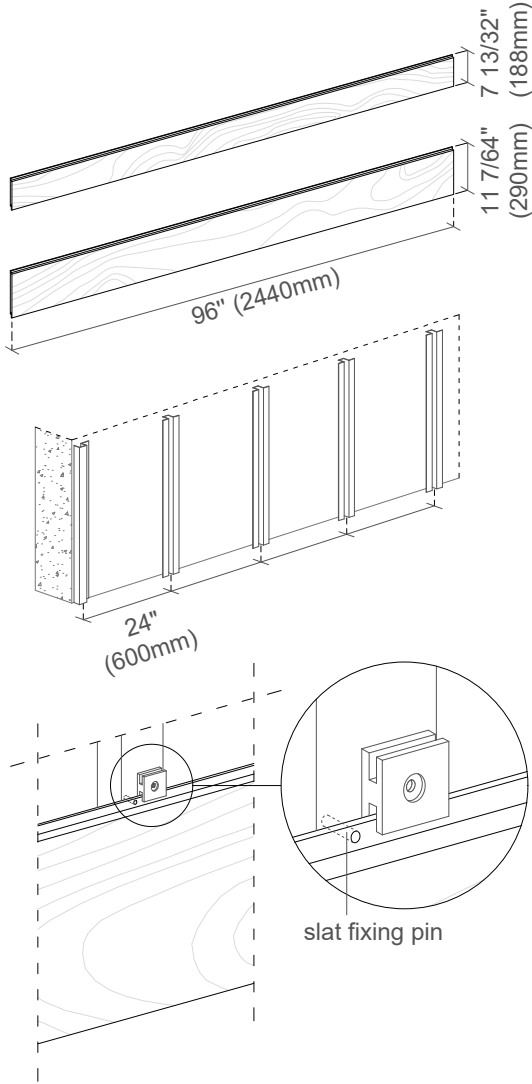
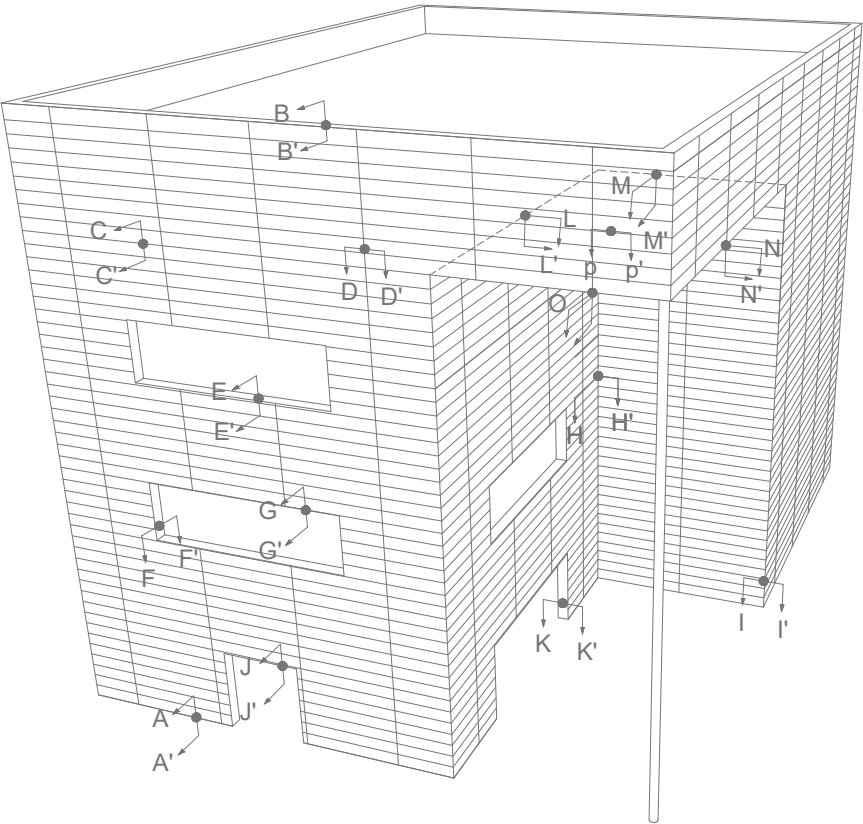


DO NOT OVERTIGHTEN THE SCREW!

Torque recommendations for SX3 screw:

5Nm to fasten the panel on a 7/64" thick aluminum channel



FIXING DETAIL	MEASURES: INCHES & MM
A-A'	FAÇADE BASE
B-B'	PARAPET CAP
C-C'	HORIZONTAL JOINT
D-D'	VERTICAL JOINT
E-E'	WINDOW SILL
F-F'	WINDOW JAMB
G-G'	WINDOW HEAD
H-H'	INSIDE CORNER
I-I'	OUTSIDE CORNER
J-J'	DOOR HEAD
K-K'	DOOR JAMB
L-L'	WALL-SOFFIT INSIDE CORNER 1
M-M'	WALL-SOFFIT INSIDE CORNER 2
N-N'	WALL-SOFFIT OUTSIDE CORNER 1
O-O'	WALL-SOFFIT OUTSIDE CORNER 2
P-P'	SOFFIT JOINT

Measurements in inches are approximated. Real measurements in mm.
The updated version of this present installation detail can be found on the PARKLEX PRODEMA web.
Panel sizes and maximum distances in technical catalogue.

PARKLEX PRODEMA www.parklexprodema.com	PRODUCT NATURSIDING	SYSTEM FAÇADE SIDING (METALLIC FRAME) HORIZONTAL LAYOUT	DRAWN BY Joseba Salbide	DATE 01/2022
	PLAN# NS1-01H-B-G.P.	TITLE GENERAL PERSPECTIVE	APPROVED BY Maialen Irastorza	PAGE 1 / 22