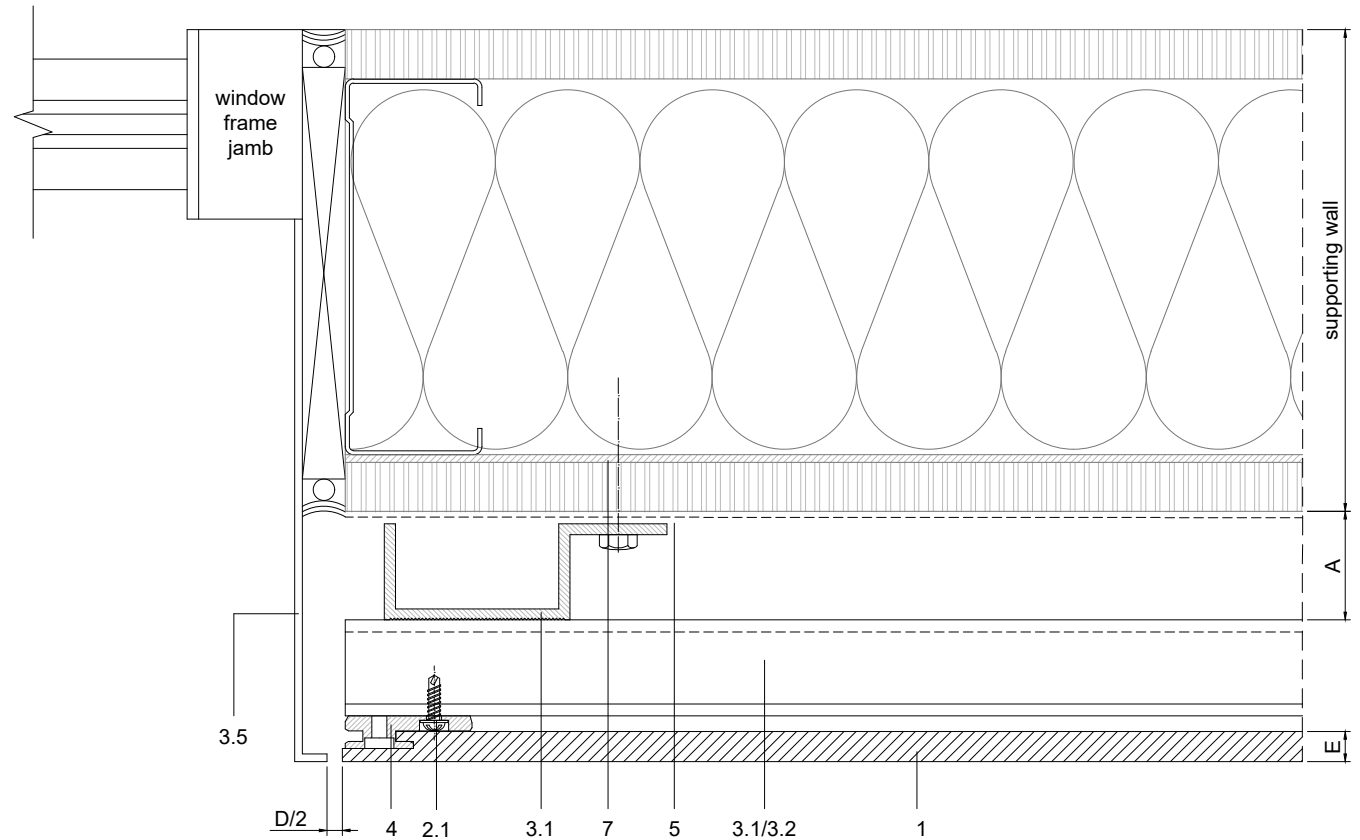
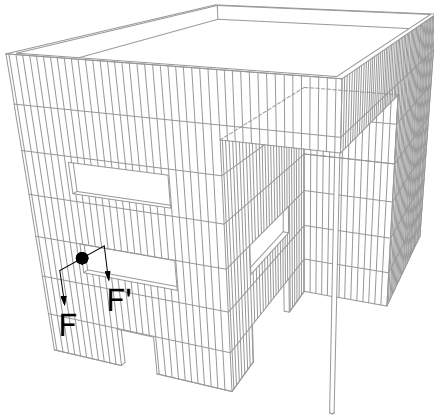


|     |                                     |
|-----|-------------------------------------|
| 1   | NATURSIDING                         |
| 2   | Screws                              |
| 2.1 | Clip fixing screw                   |
| 2.2 | Wall fixing screw - by others       |
| 2.3 | SX3 screw                           |
| 2.4 | Washer 1/8" (3mm) - by others       |
| 3   | Profiles                            |
| 3.1 | Aluminum J channel - by others      |
| 3.2 | Aluminum HAT channel - by others    |
| 3.3 | Coronation profile - by others      |
| 3.4 | Sill profile - by others            |
| 3.5 | Jamb profile - by others            |
| 3.6 | Corner profile - by others          |
| 4   | Fixing clip                         |
| 5   | Water resistant barrier - by others |
| 6   | Vent. screen - by others            |
| 7   | Steel backing plate - by others     |
| 8   | Base L profile - by others          |

|   |  |
|---|--|
| A | Required min. air chamber $\geq 3/4"$ (20mm) |
| B | Circulation of air $\geq 3/4"$ (20mm)        |
| C | Vertical expansion joint $1/16"$ (1mm)       |
| D | Horizontal expansion joint $1/4"$ (6mm)      |
| E | Panel thickness $5/16"$ (8mm)                |



Measurements in inches are approximated. Real measurements in mm.

Scale 1:2

Measures: inch

**PARKLEX PRODEMA**  
www.parklexprodema.com

|         |              |        |   |             |                   |      |         |
|---------|--------------|--------|---|-------------|-------------------|------|---------|
| PRODUCT | NATURSIDING  | SYSTEM | FAÇADE SIDING (METALLIC FRAME)<br>VERTICAL LAYOUT | DRAWN BY    | Joseba Salbide    | DATE | 01/2022 |
| PLAN#   | NS1-01V-B-F1 | TITLE  | DETAIL F-F' // WINDOW JAMB 1                      | APPROVED BY | Maialen Irastorza | PAGE | 7 / 20  |