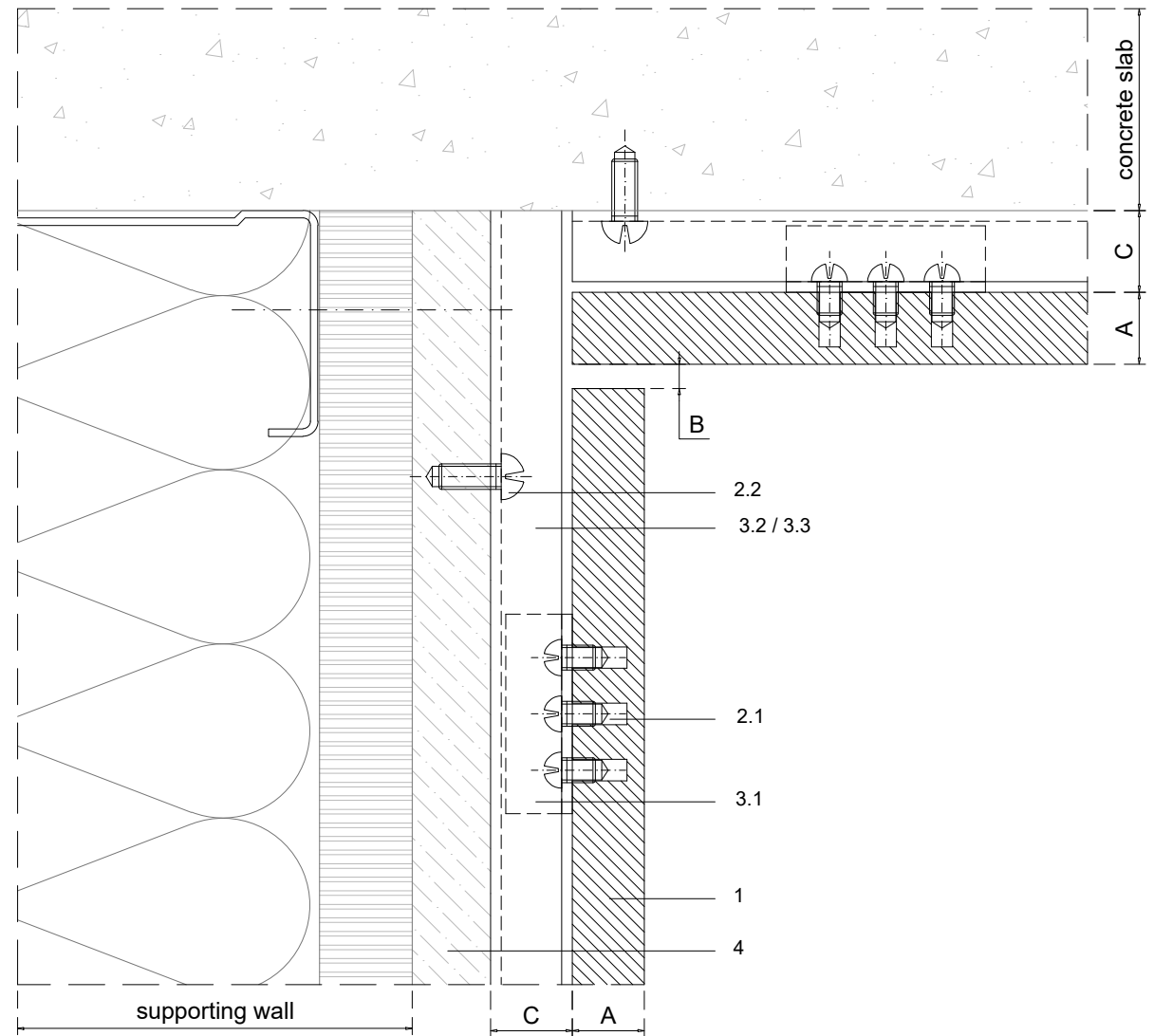
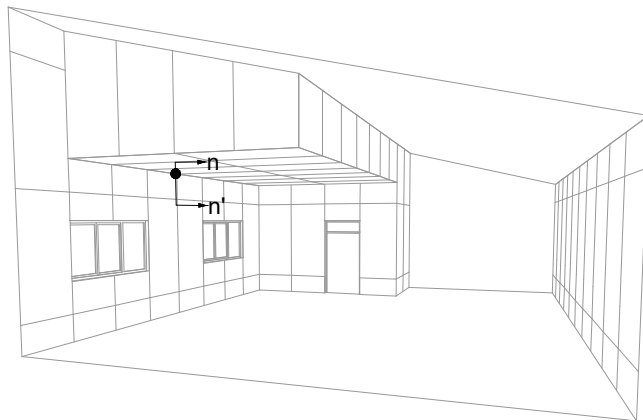


1	NATURHARDPANEL
2	Screws
2.1	Fixing screw
2.2	Wall fixing screw - by others
2.3	Stopper fixing screw - by others
3	Profiles
3.1	Removable / non removable clip
3.2	Single rail
3.3	Joint rail
3.4	Stopper
4	Supporting panel - by others
A	Panel thickness 5/16" - 1/2" (8-12mm)
B	Expansion joint 1/8" (3mm)
C	Chamber depth 3/8" (10mm)



Measurements in inches are approximated. Real measurements in mm.

Scale 1:1

Measures: inch

PARKLEX PRODEMA

www.parklexprodema.com

PRODUCT	NATURHARDPANEL	SYSTEM	REMOVABLE CLIP SYSTEM VERTICAL PIECE LAYOUT	DRAWN BY	Joseba Salbide	DATE	01/2022
PLAN#	NH1-01V-N	TITLE	DETAIL N-N' // WALL/DROPPED CEILING INTERSECTION	APPROVED BY	Maialen Irastorza	PAGE	15 / 15