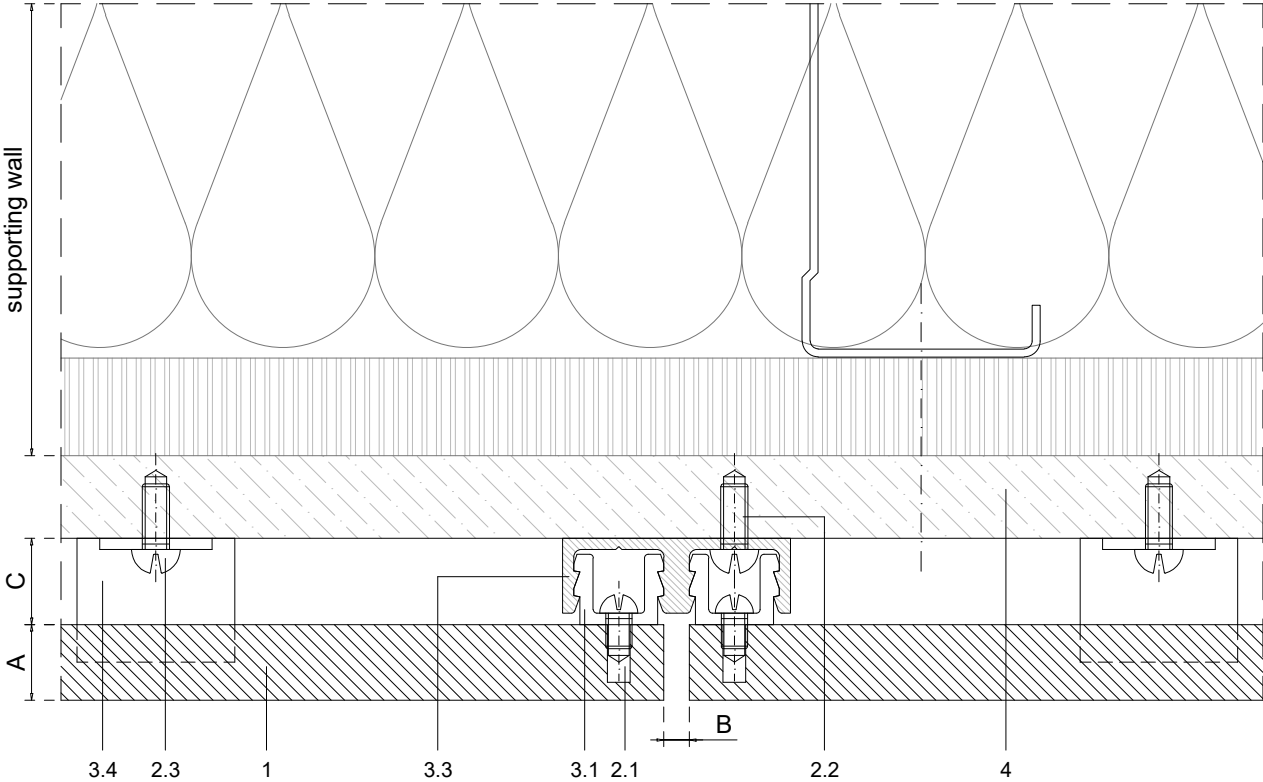
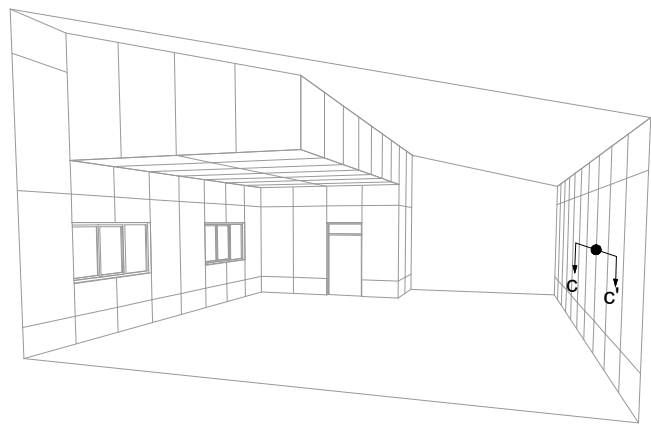


1	NATURHARDPANEL
2	Screws
	2.1 Fixing screw
	2.2 Wall fixing screw - by others
	2.3 Stopper fixing screw - by others
3	Profiles
	3.1 Removable / non removable clip
	3.2 Single rail
	3.3 Joint rail
	3.4 Stopper
4	Supporting panel - by others

A	Panel thickness 5/16" - 1/2" (8-12mm)
B	Expansion joint 1/8" (3mm)
C	Chamber depth 3/8" (10mm)



Measurements in inches are approximated. Real measurements in mm.

Scale 1:1

Measures: inch

<b>PARKLEX PRODEMA</b> www.parklexprodema.com	PRODUCT NATURHARDPANEL	SYSTEM REMOVABLE CLIP SYSTEM VERTICAL PIECE LAYOUT	DRAWN BY Joseba Salbide	DATE 01/2022
	PLAN# NH1-01V-C	TITLE DETAIL C-C' // VERTICAL JOINT	APPROVED BY Maialen Irastorza	PAGE 4 / 15