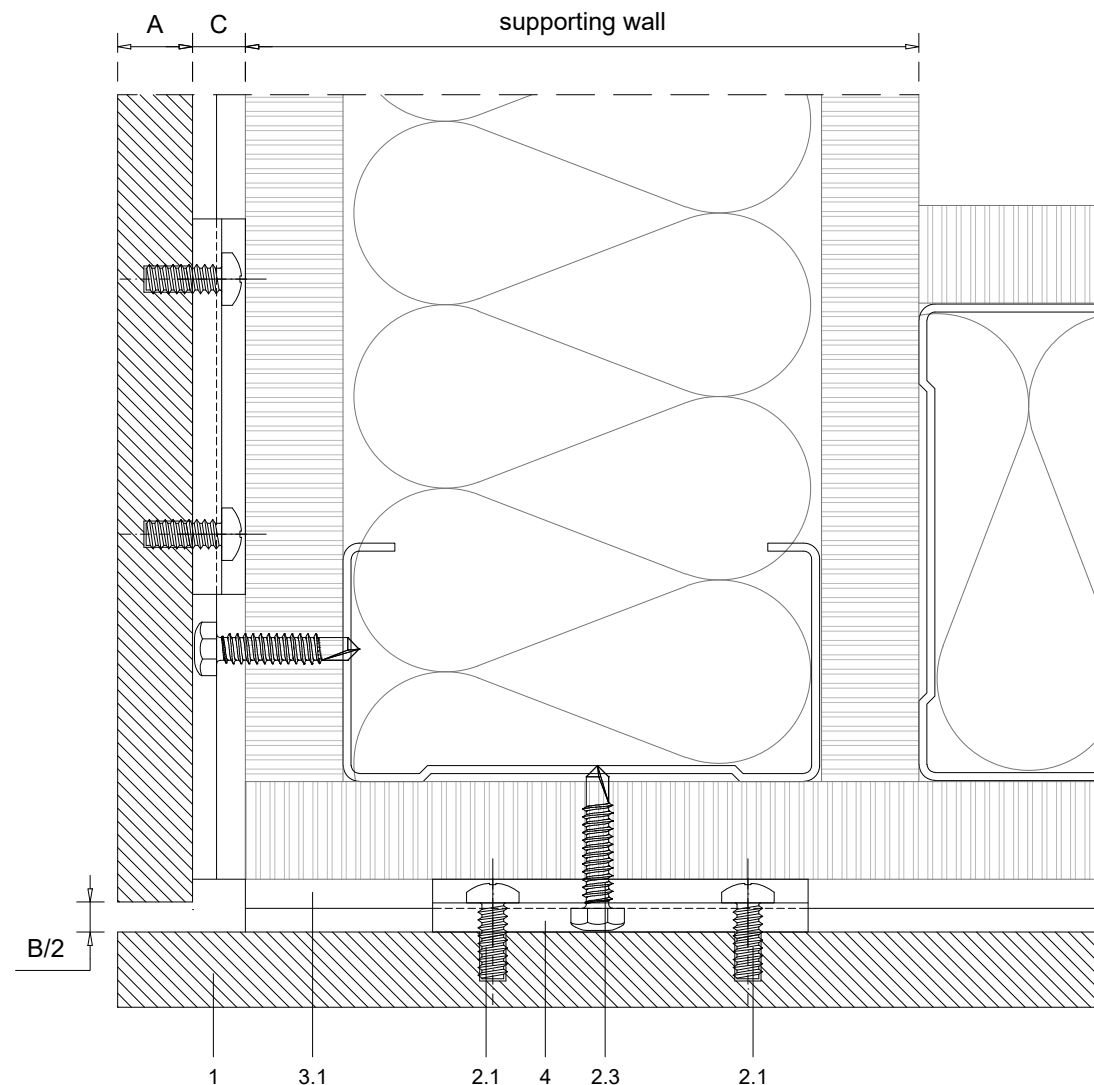
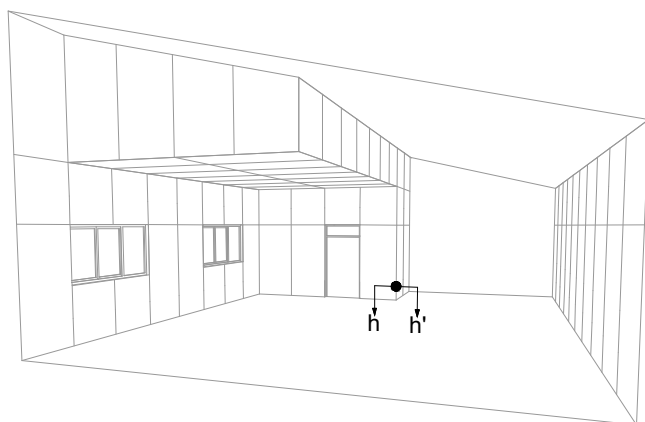


| | |
|-----|--|
| 1 | NATURHARDPANEL |
| 2 | Screws |
| 2.1 | Panel screw - on the rear of the panel |
| 2.2 | Clip fixing screw* |
| 2.3 | Wall fixing screw - by others |
| 3 | Profiles |
| 3.1 | Interior hanging rail |
| 4 | Interior hanging hook for walls and ceilings |

| | |
|---|---------------------------------|
| A | Panel thickness 5/16" (8mm) |
| B | Expansion joint 5/16" (8mm) |
| C | Chamber depth min. 9/32" (7mm) |
| D | Top expansion joint 3/4" (20mm) |

* PARKLEXPRODEMA offers fixing screw for metal and wood substrates



Measurements in inches are approximate. Real measurements in mm.

Scale 1:1

Measures: inch

PARKLEX PRODEMA

www.parklexprodema.com

| | | | |
|----------------|---|-------------------|---------|
| PRODUCT | SYSTEM | DRAWN BY | DATE |
| NATURHARDPANEL | INTERIOR HANGING HOOK SYSTEM FOR WALLS AND CEILINGS | Joseba Salbide | 04/2023 |
| PLAN# | TITLE | APPROVED BY | PAGE |
| NH1-05-H | DETAIL H-H' // OUTSIDE CORNER | Maialen Irastorza | 11 / 17 |