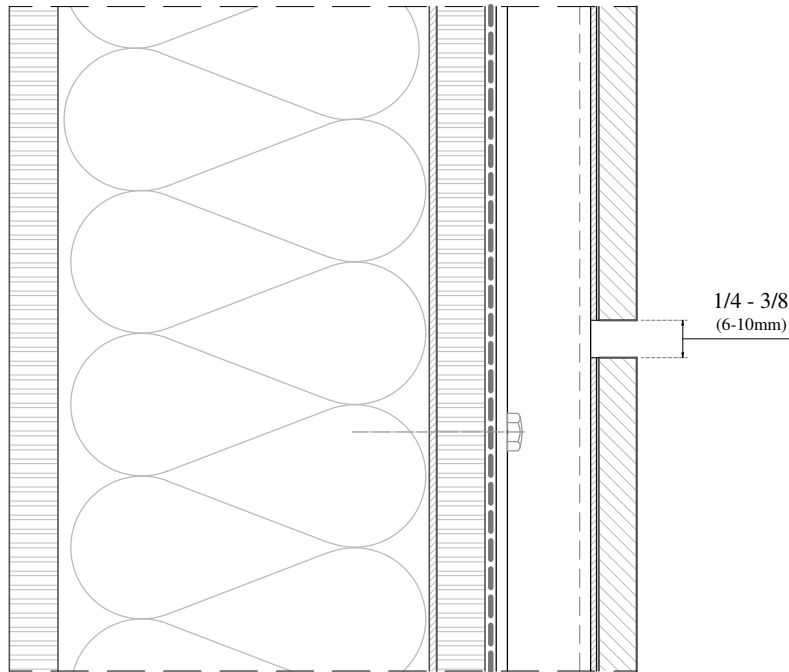


- | | |
|--------------------------|------------------------|
| A: BASE VENTILATION | H: INSIDE CORNER |
| B: HEAD VENTILATION | I: OUTSIDE CORNER |
| C: TYP. HORIZONTAL JOINT | J: DOOR HEAD |
| D: TYP. VERTICAL JOINT | K: DOOR JAMB |
| E: WINDOW CILL | L: TRANSVERSAL SOFFIT |
| F: WINDOW JAMB | M: LONGITUDINAL SOFFIT |
| G: WINDOW HEAD | |

Measurements in inches are approximated. Real measurements in mm.

Project CONCEALED FASTENING WITH ADHESIVE, WITH BACKING PLATE		
Plan GENERAL PERSPECTIVE		
<div> <div>Prodexma</div> <div>NATURAL WOOD BEAUTY</div> </div>		Product PRODEX
Units Inches (")	The updated version of this present installation detail can be found on the Prodexma web.	
Plan code PREX 1-05-A-GP	Page 1	



Measurements in inches are approximated.
Real measurements in mm.



Project

**CONCEALED FASTENING WITH ADHESIVE,
WITH BACKING PLATE**

Plan

FIXING DETAIL

Prodema
NATURAL WOOD BEAUTY

Product

PRODEX

Units

Inches (")

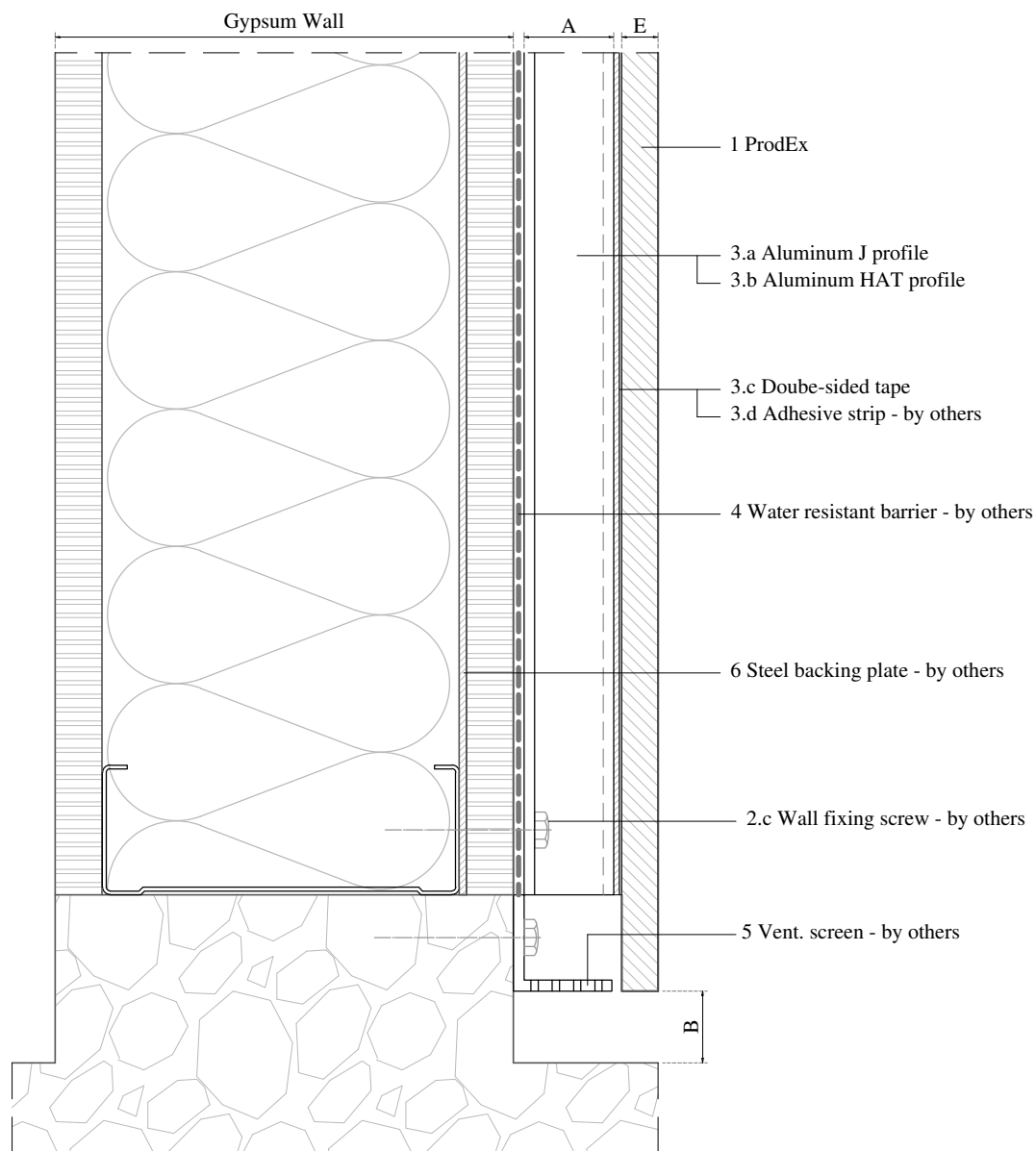
The updated version of this
present installation detail can
be found on the Prodema web.

Plan code

PREX 1-05-A-FIX

Page

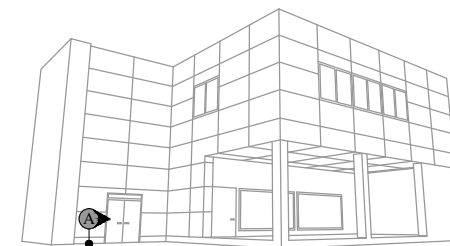
2



E	Panel thickness $\geq 5/16"$ (8mm)	
B	Circulation of air $\geq 3/4"$ (20mm)	
A	Required min. air chamber $\geq 3/4"$ (20mm)	
6	Steel backing plate - by others	
5	Vent. screen - by others	
4	Water resistant barrier - by others	
	3.d	Adhesive strip - by others
	3.c	Double-sided tape
	3.b	Aluminum HAT profile
	3.a	Aluminum J profile
3	Profiles	
2.c	Wall fixing screw - by others	
2	Screws	
1	ProdEx	

+ primer

Measurements in inches are approximated.
Real measurements in mm.



Project

**CONCEALED FASTENING WITH ADHESIVE,
WITH BACKING PLATE**

Plan

**DETAIL A
BASE VENTILATION**

Prodema
NATURAL WOOD BEAUTY

Product

PRODEX

Units

Inches (")

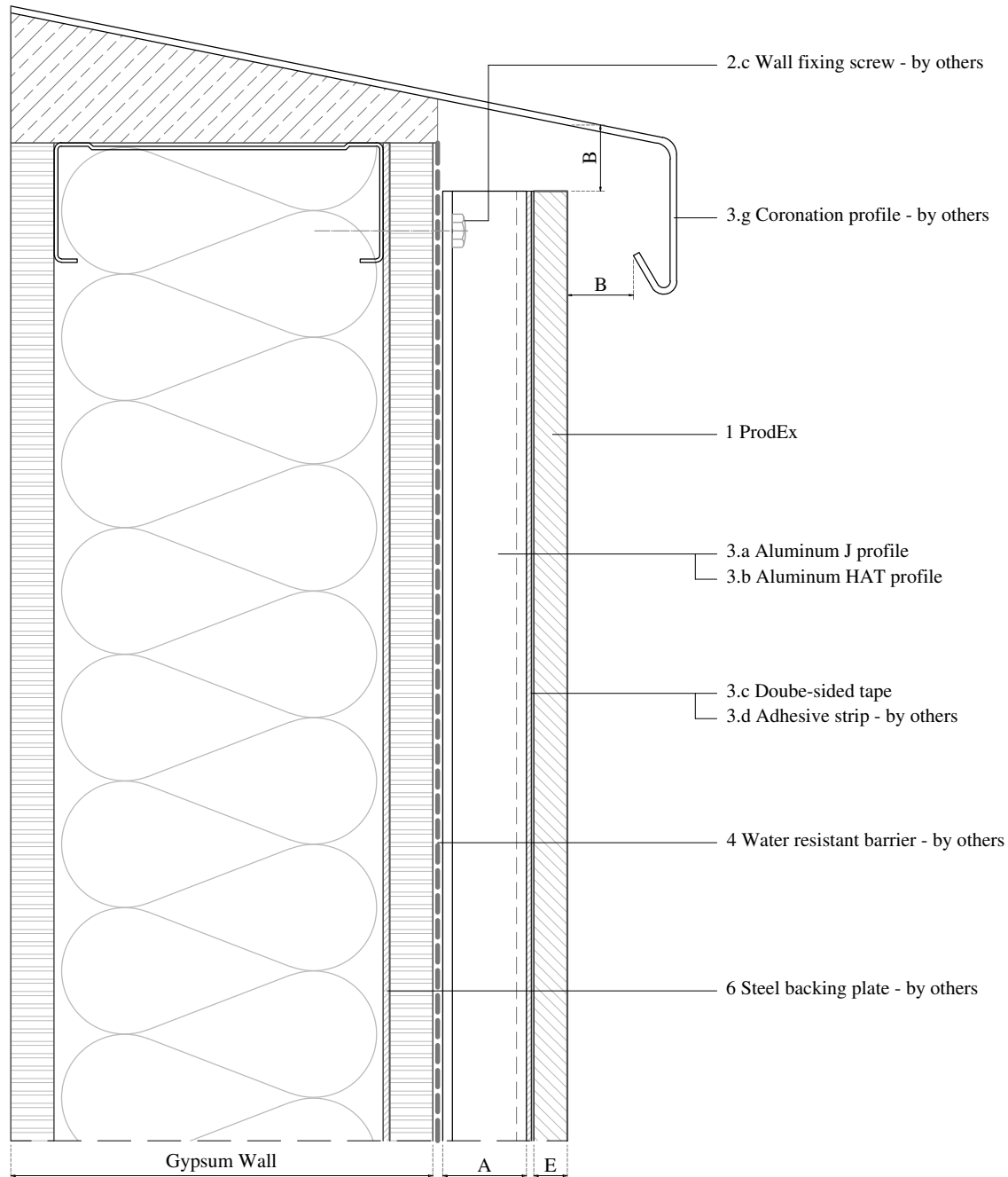
The updated version of this
present installation detail can
be found on the Prodema web.

Plan code

PREX 1-05-A-A

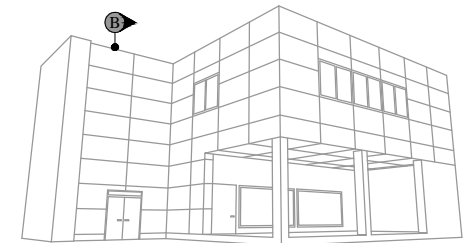
Page

3



E	Panel thickness $\geq 5/16"$ (8mm)	
B	Circulation of air $\geq 3/4"$ (20mm)	
A	Required min. air chamber $\geq 3/4"$ (20mm)	
6	Steel backing plate - by others	
4	Water resistant barrier - by others	
3.g	Coronation profile - by others	+ primer
3.d	Adhesive strip - by others	
3.c	Double-sided tape	
3.b	Aluminum HAT profile	
3.a	Aluminum J profile	
3	Profiles	
2.c	Wall fixing screw - by others	
2	Screws	
1	ProdEx	

Measurements in inches are approximated.
Real measurements in mm.



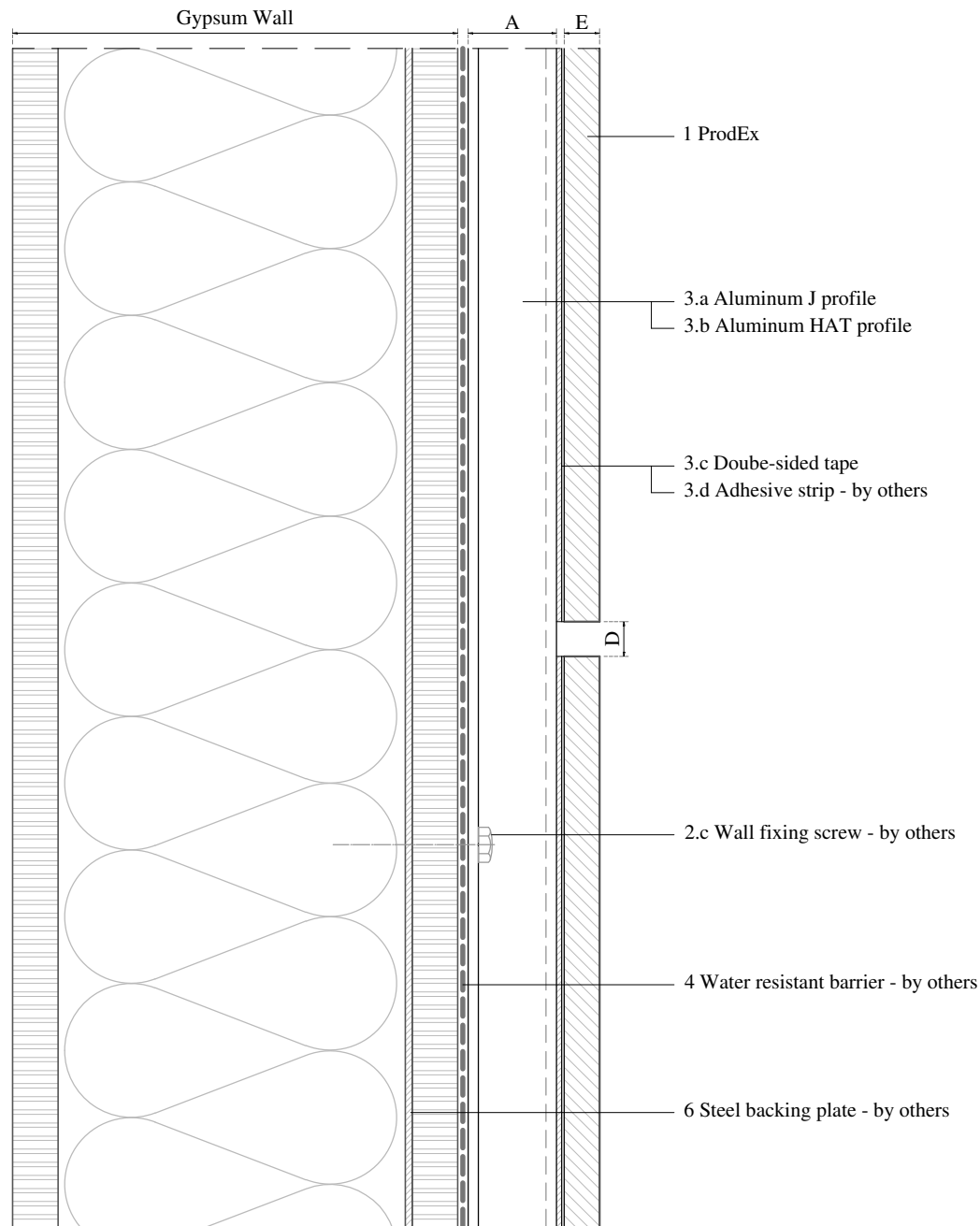
Project

**CONCEALED FASTENING WITH ADHESIVE,
WITH BACKING PLATE**

Plan

**DETAIL B
HEAD VENTILATION**

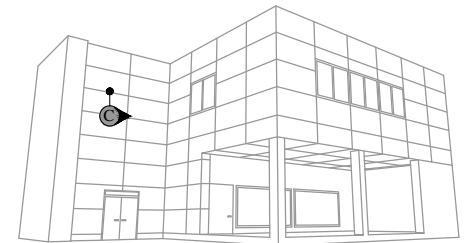
		Product
		PRODEX
Units	The updated version of this present installation detail can be found on the Prodema web.	
Inches (")		
Plan code		Page
PREX 1-05-A-B		4



E	Panel thickness $\geq 5/16"$ (8mm)	
D	Expansion joint $1/4" - 3/8"$ (6-10mm)	
A	Required min. air chamber $\geq 3/4"$ (20mm)	
6	Steel backing plate - by others	
4	Water resistant barrier - by others	
	3.d	Adhesive strip - by others
	3.c	Double-sided tape
	3.b	Aluminum HAT profile
	3.a	Aluminum J profile
3	Profiles	
2.c	Wall fixing screw - by others	
2	Screws	
1	ProdEx	

+ primer

Measurements in inches are approximated.
Real measurements in mm.



Project

**CONCEALED FASTENING WITH ADHESIVE,
WITH BACKING PLATE**

Plan

**DETAIL C
TYPICAL HORIZONTAL JOINT**

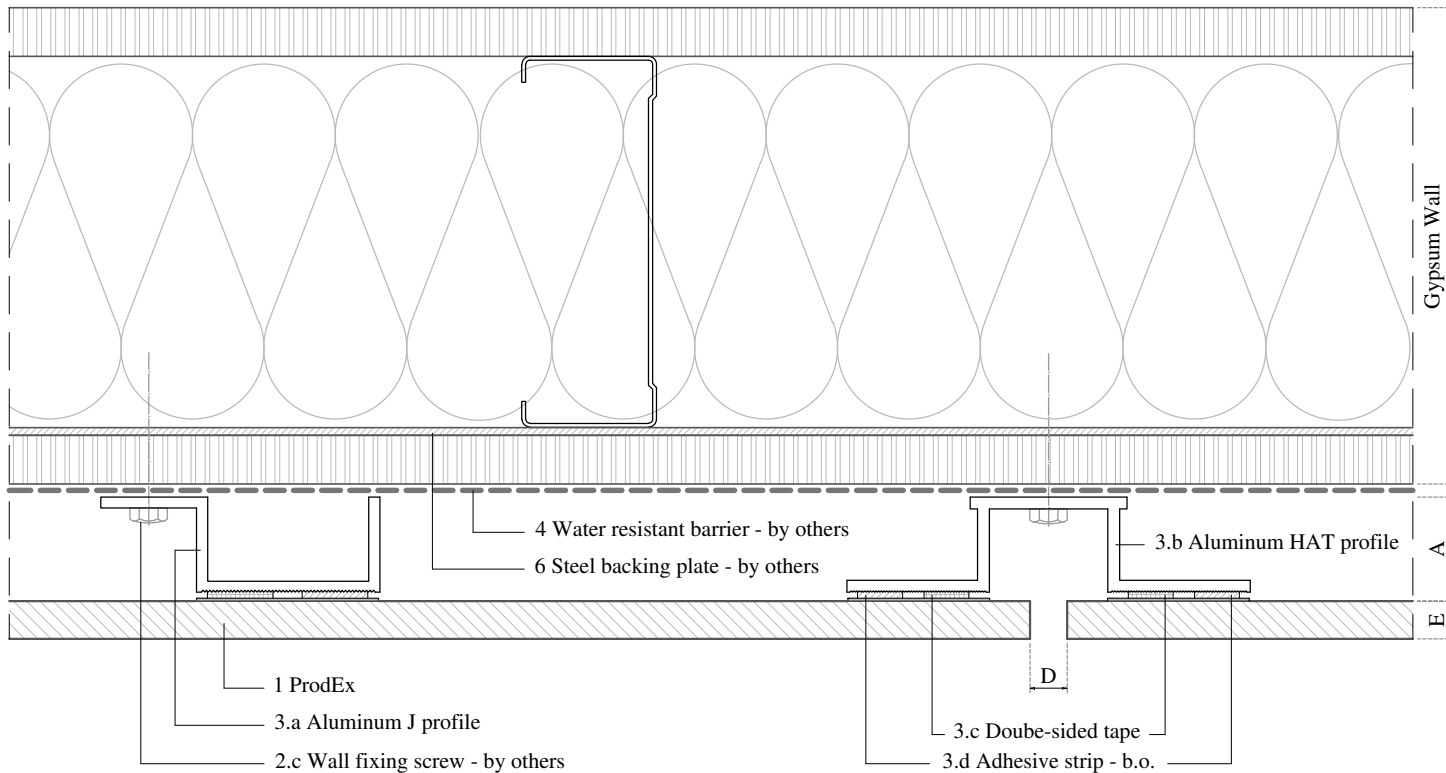
Prodema NATURAL WOOD BEAUTY	Product
	PRODEX

Units	The updated version of this present installation detail can be found on the Prodema web.
Inches (")	

Plan code
PREX 1-05-A-C

Page

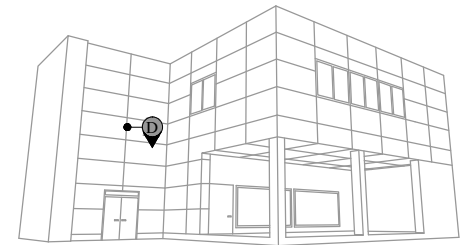
5



E	Panel thickness $\geq 5/16"$ (8mm)	
D	Expansion joint $1/4"$ - $3/8"$ (6-10mm)	
A	Required min. air chamber $\geq 3/4"$ (20mm)	
6	Steel backing plate - by others	
4	Water resistant barrier - by others	
	3.d	Adhesive strip - by others
	3.c	Double-sided tape
	3.b	Aluminum HAT profile
	3.a	Aluminum J profile
3	Profiles	
2.c	Wall fixing screw - by others	
2	Screws	
1	ProdEx	

+ primer

Measurements in inches are approximated.
Real measurements in mm.



Project

**CONCEALED FASTENING WITH ADHESIVE,
WITH BACKING PLATE**

Plan

**DETAIL D
TYPICAL VERTICAL JOINT**

Prodema
NATURAL WOOD BEAUTY

Product

PRODEX

Units

Inches (")

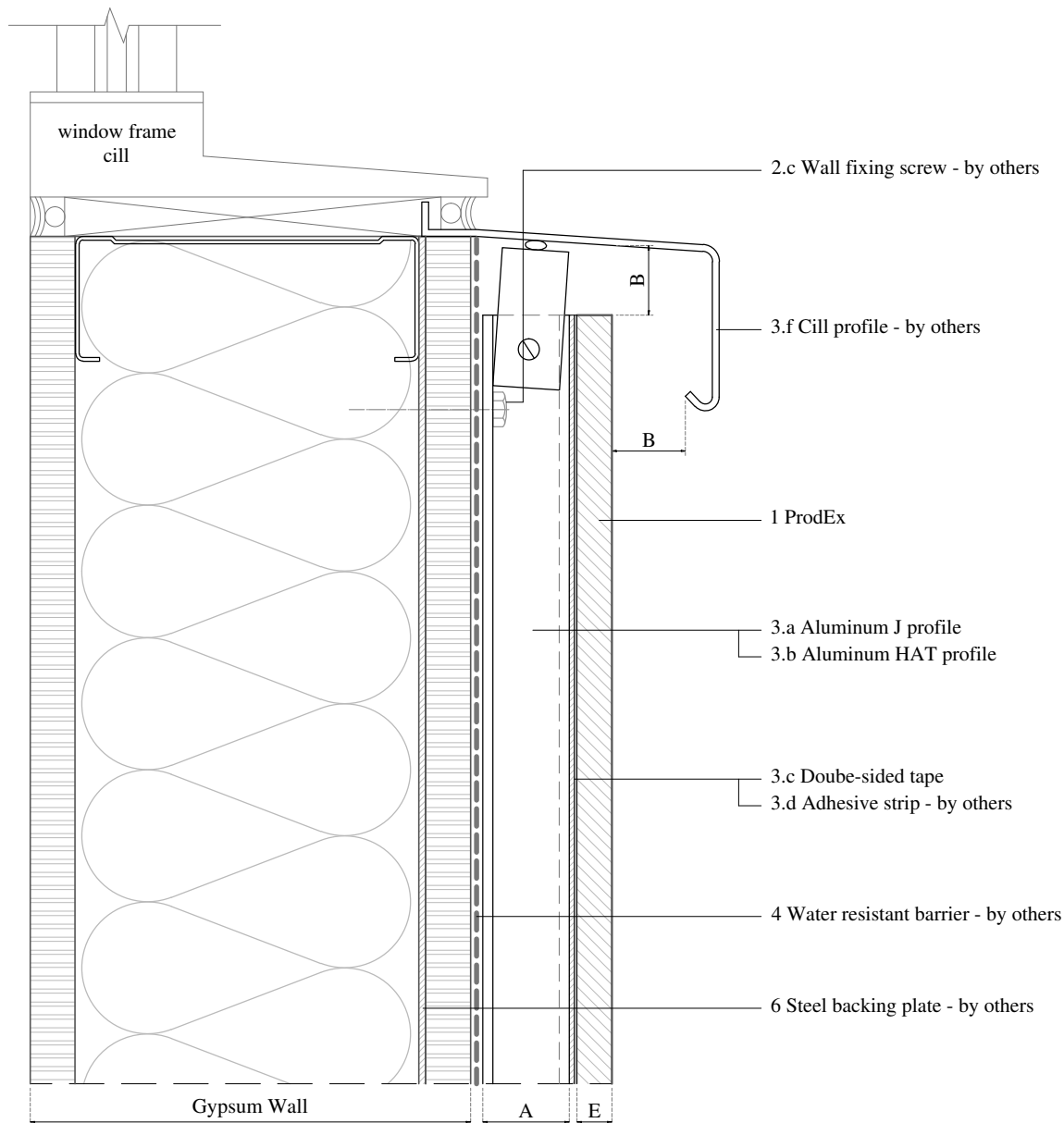
The updated version of this
present installation detail can
be found on the Prodema web.

Plan code

PREX 1-05-A-D

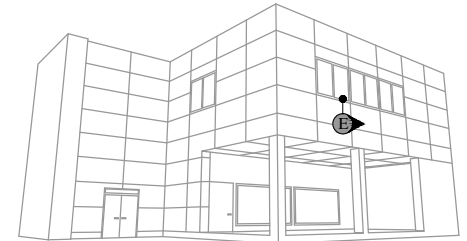
Page

6



E	Panel thickness $\geq 5/16"$ (8mm)	
B	Circulation of air $\geq 3/4"$ (20mm)	
A	Required min. air chamber $\geq 3/4"$ (20mm)	
6	Steel backing plate - by others	
4	Water resistant barrier - by others	
3.f	Cill profile - by others	
3.d	Adhesive strip - by others	+ primer
3.c	Double-sided tape	
3.b	Aluminum HAT profile	
3.a	Aluminum J profile	
3	Profiles	
2.c	Wall fixing screw - by others	
2	Screws	
1	ProdEx	

Measurements in inches are approximated.
Real measurements in mm.



Project

**CONCEALED FASTENING WITH ADHESIVE,
WITH BACKING PLATE**

Plan

**DETAIL E
WINDOW CILL**

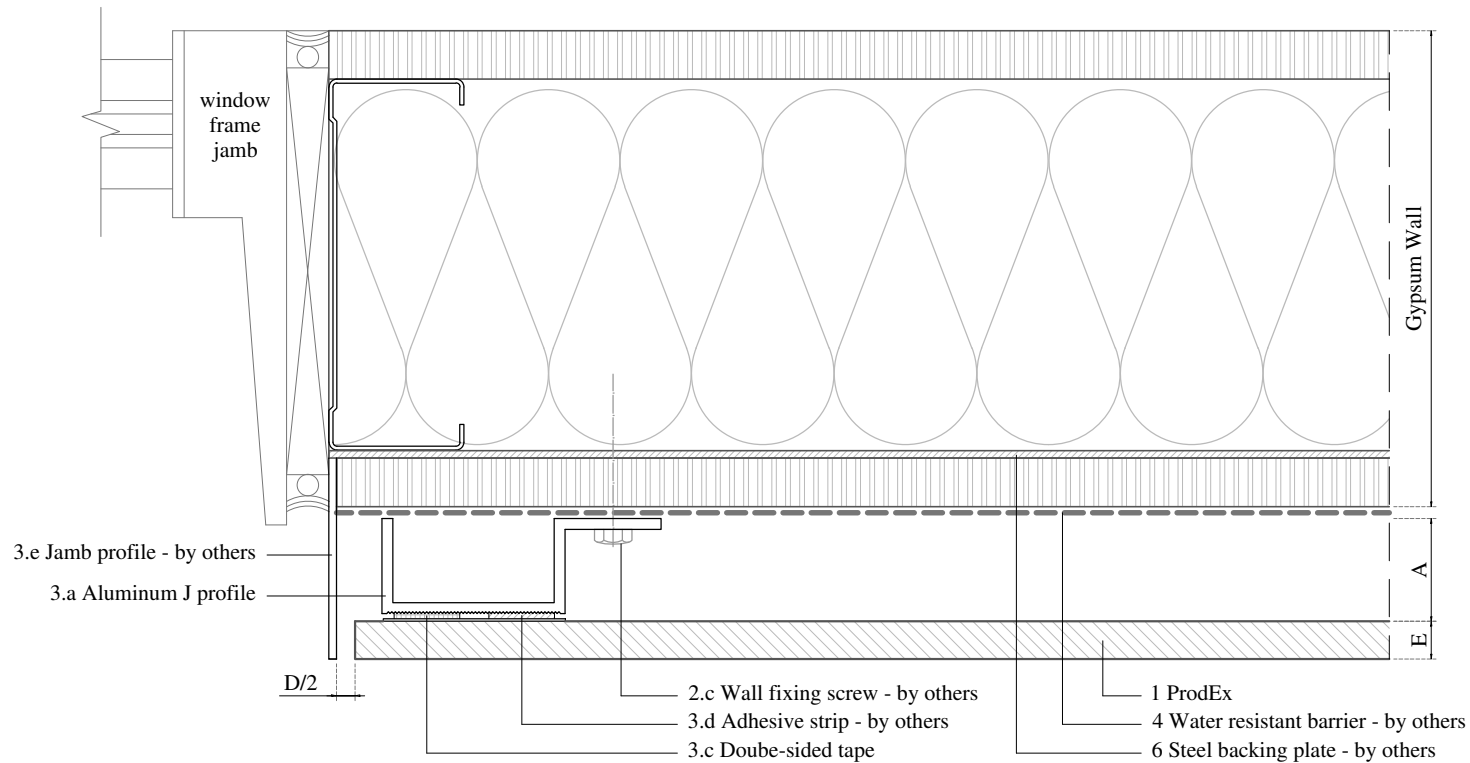
Prodema NATURAL WOOD BEAUTY	Product
	PRODEX

Units	The updated version of this present installation detail can be found on the Prodema web.
Inches (")	

Plan code
PREX 1-05-A-E

Page

7



E	Panel thickness $\geq 5/16"$ (8mm)
D	Expansion joint $1/4" - 3/8"$ (6-10mm)
A	Required min. air chamber $\geq 3/4"$ (20mm)
6	Steel backing plate - by others
4	Water resistant barrier - by others
3.e	Jamb profile - by others
3.d	Adhesive strip - by others
3.c	Double-sided tape
3.a	Aluminum J profile
3	Profiles
2.c	Wall fixing screw - by others
2	Screws
1	ProdEx

Measurements in inches are approximated.
Real measurements in mm.



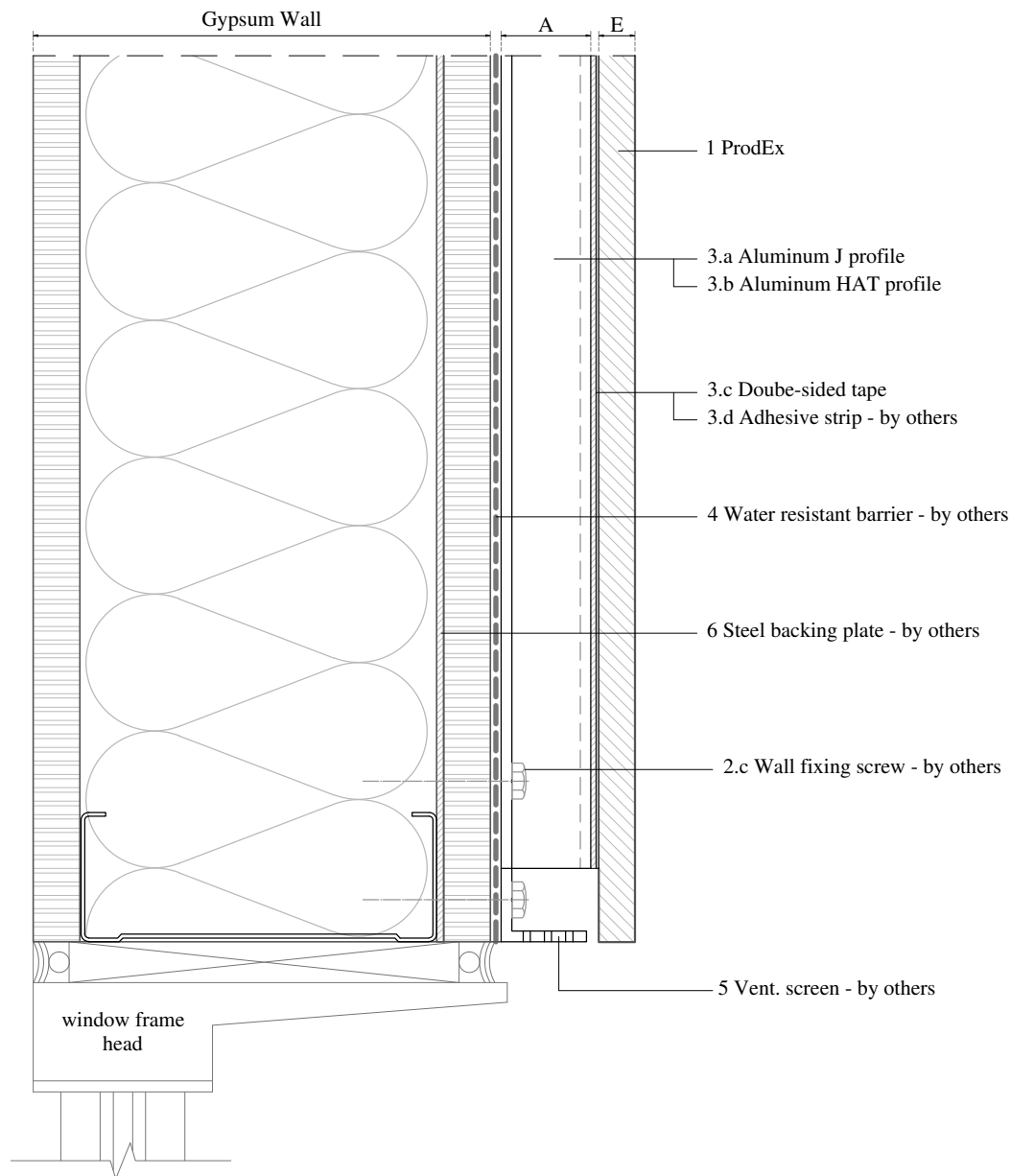
Project

**CONCEALED FASTENING WITH ADHESIVE,
WITH BACKING PLATE**

Plan

**DETAIL F
WINDOW JAMB**

Prodema NATURAL WOOD BEAUTY		Product
		PRODEX
Units	The updated version of this present installation detail can be found on the Prodema web.	
Inches (")		
Plan code	PREX 1-05-A-F	
Page	8	



E	Panel thickness $\geq 5/16"$ (8mm)	
A	Required min. air chamber $\geq 3/4"$ (20mm)	
6	Steel backing plate - by others	
5	Vent. screen - by others	
4	Water resistant barrier - by others	
3	3.d	Adhesive strip - by others
	3.c	Double-sided tape
	3.b	Aluminum HAT profile
	3.a	Aluminum J profile
3	Profiles	
2.c	Wall fixing screw - by others	
2	Screws	
1	ProdEx	

+ primer

Measurements in inches are approximated.
Real measurements in mm.



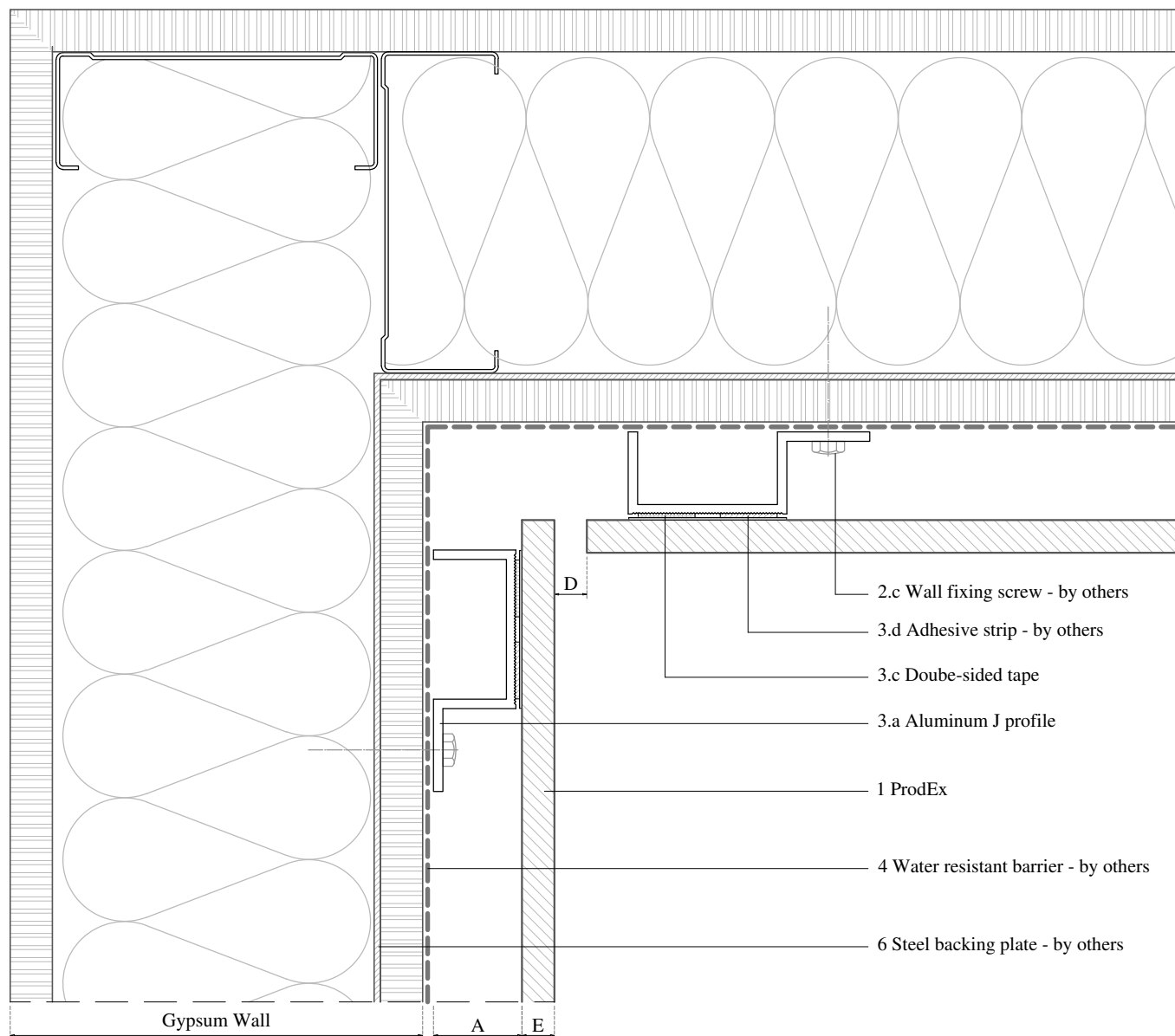
Project

**CONCEALED FASTENING WITH ADHESIVE,
WITH BACKING PLATE**

Plan

**DETAIL G
WINDOW HEAD**

Prodema NATURAL WOOD BEAUTY		Product
		PRODEX
Units	The updated version of this present installation detail can be found on the Prodema web.	
Inches (")		
Plan code		Page
PREX 1-05-A-G		9



E	Panel thickness $\geq 5/16"$ (8mm)		
D	Expansion joint $1/4" - 3/8"$ (6-10mm)		
A	Required min. air chamber $\geq 3/4"$ (20mm)		
6	Steel backing plate - by others		
4	Water resistant barrier - by others		
	3.d	Adhesive strip - by others	+ primer
	3.c	Double-sided tape	
	3.a	Aluminum J profile	
3	Profiles		
	2.c	Wall fixing screw - by others	
2	Screws		
1	ProdEx		

Measurements in inches are approximated.
Real measurements in mm.



Project

**CONCEALED FASTENING WITH ADHESIVE,
WITH BACKING PLATE**

Plan

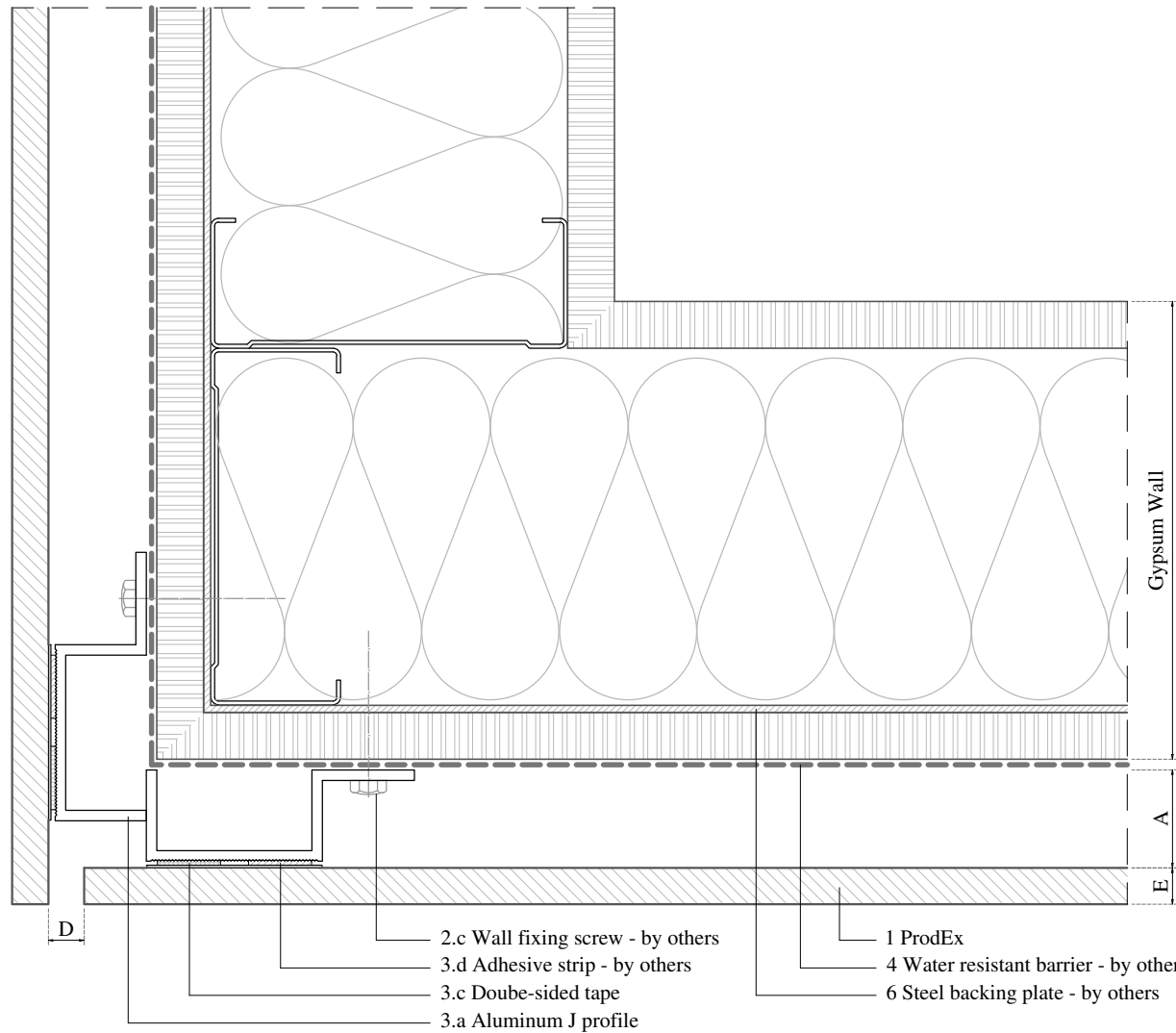
**DETAIL H
INSIDE CORNER**

Prodema NATURAL WOOD BEAUTY	Product
	PRODEX

Units	The updated version of this present installation detail can be found on the Prodema web.
Inches (")	

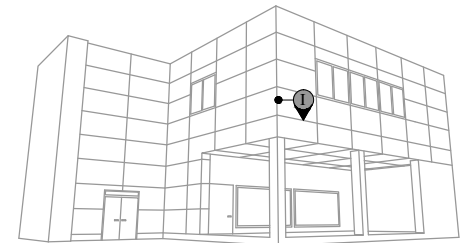
Plan code
PREX 1-05-A-H

Page
10



E	Panel thickness $\geq 5/16"$ (8mm)		
D	Expansion joint $1/4"$ - $3/8"$ (6-10mm)		
A	Required min. air chamber $\geq 3/4"$ (20mm)		
6	Steel backing plate - by others		
4	Water resistant barrier - by others		
	3.d	Adhesive strip - by others	+ primer
	3.c	Double-sided tape	
	3.a	Aluminum J profile	
3	Profiles		
	2.c	Wall fixing screw - by others	
2	Screws		
1	ProdEx		

Measurements in inches are approximated.
Real measurements in mm.



Project

**CONCEALED FASTENING WITH ADHESIVE,
WITH BACKING PLATE**

Plan

**DETAIL I
OUTSIDE CORNER**

Prodema
NATURAL WOOD BEAUTY

Product

PRODEX

Units

Inches (")

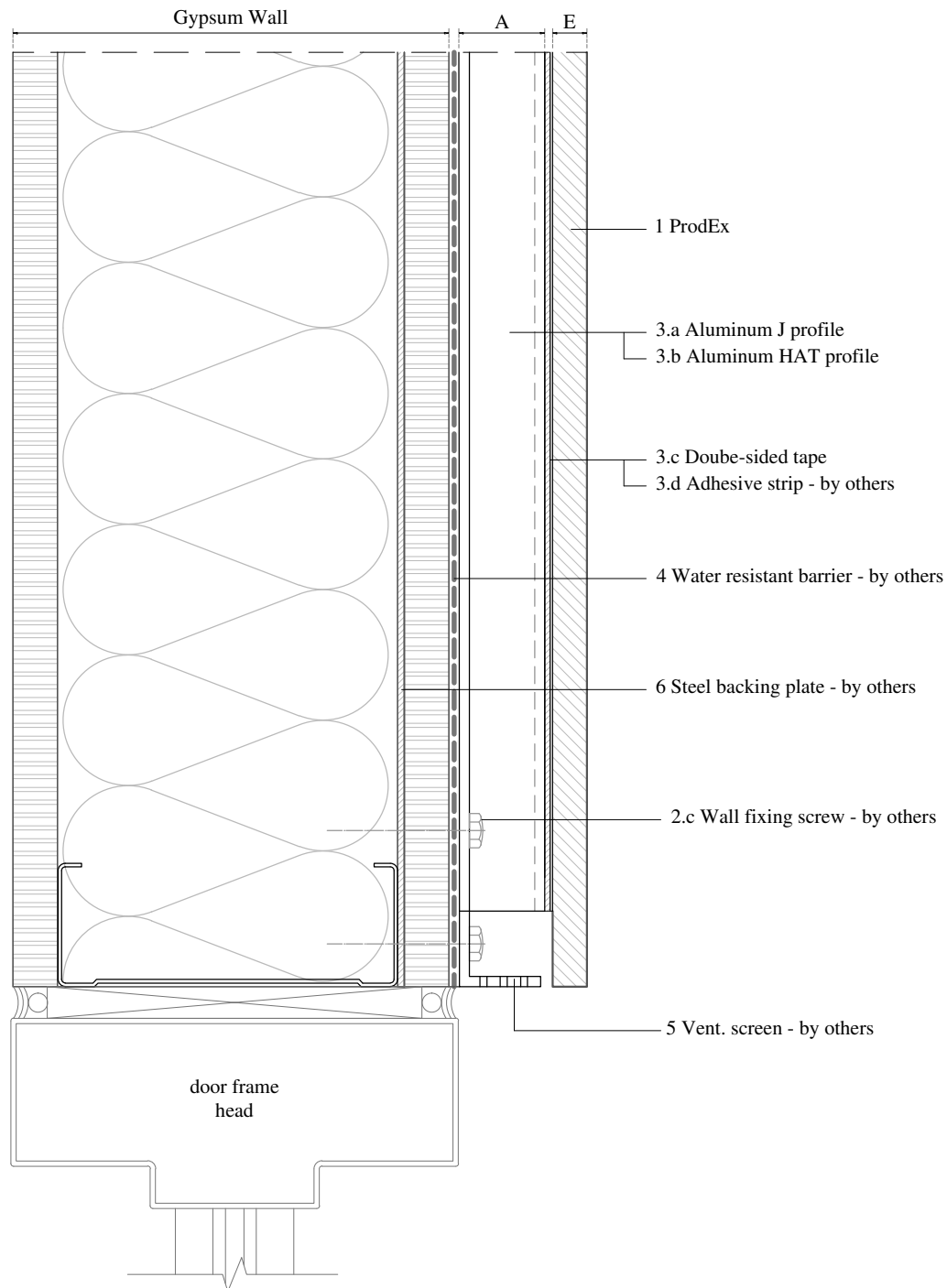
The updated version of this
present installation detail can
be found on the Prodema web.

Plan code

PREX 1-05-A-I

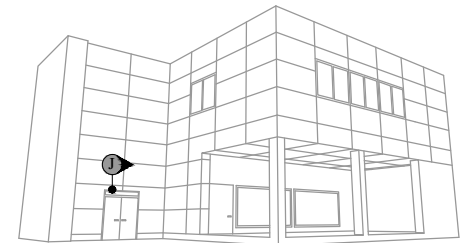
Page

11



E	Panel thickness $\geq 5/16"$ (8mm)	
A	Required min. air chamber $\geq 3/4"$ (20mm)	
6	Steel backing plate - by others	
5	Vent. screen - by others	
4	Water resistant barrier - by others	
3	3.d	Adhesive strip - by others
	3.c	Double-sided tape
	3.b	Aluminum HAT profile
	3.a	Aluminum J profile
+ primer		
3	Profiles	
2.c	Wall fixing screw - by others	
2	Screws	
1	ProdEx	

Measurements in inches are approximated.
Real measurements in mm.



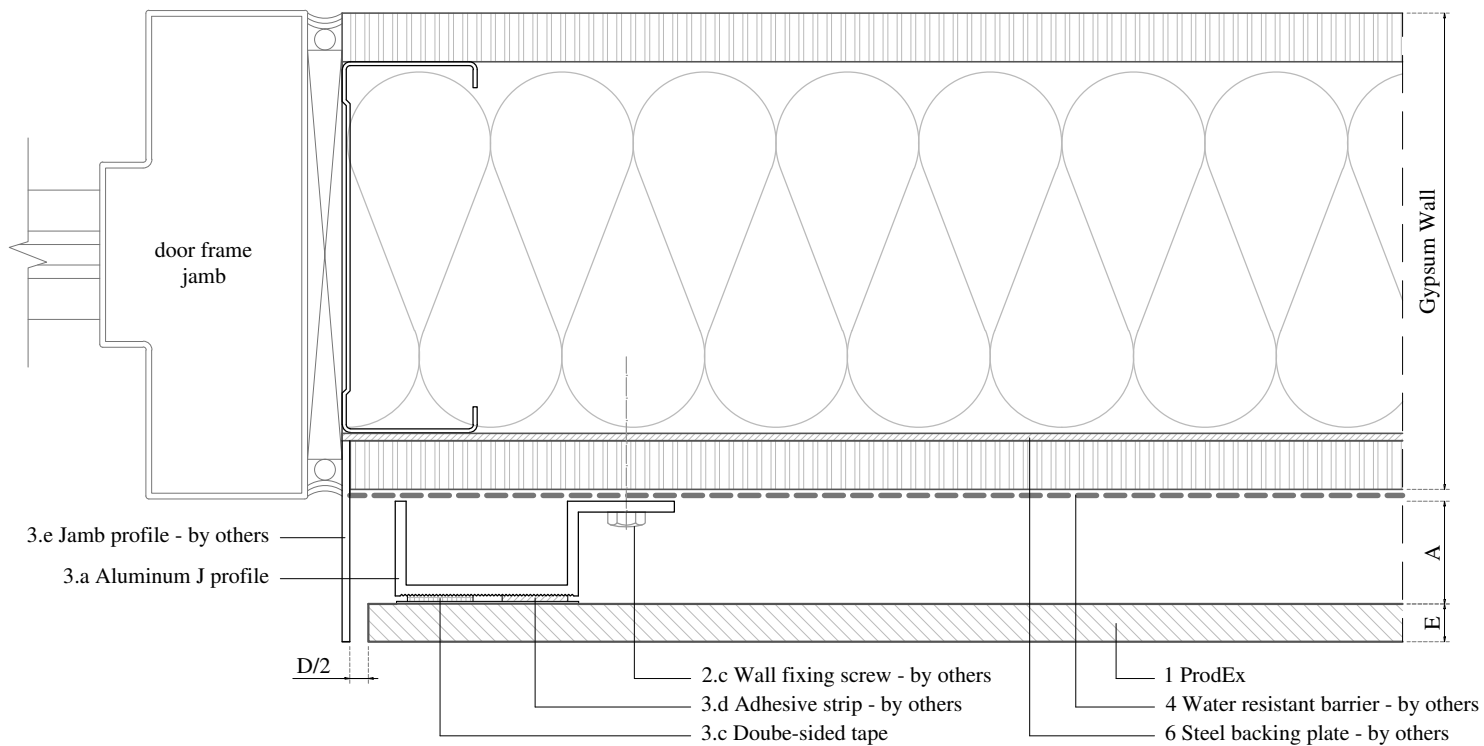
Project

**CONCEALED FASTENING WITH ADHESIVE,
WITH BACKING PLATE**

Plan

**DETAIL J
DOOR HEAD**

Prodema NATURAL WOOD BEAUTY		Product
		PRODEX
Units	The updated version of this present installation detail can be found on the Prodema web.	
Inches (")		
Plan code		Page
PREX 1-05-A-J		12



E	Panel thickness $\geq 5/16"$ (8mm)
D	Expansion joint $1/4" - 3/8"$ (6-10mm)
A	Required min. air chamber $\geq 3/4"$ (20mm)
6	Steel backing plate - by others
4	Water resistant barrier - by others
3.e	Jamb profile - by others
3.d	Adhesive strip - by others
3.c	Double-sided tape
3.a	Aluminum J profile
3	Profiles
2.c	Wall fixing screw - by others
2	Screws
1	ProdEx

Measurements in inches are approximated.
Real measurements in mm.



Project

**CONCEALED FASTENING WITH ADHESIVE,
WITH BACKING PLATE**

Plan

**DETAIL K
DOOR JAMB**

Prodema
NATURAL WOOD BEAUTY

Product

PRODEX

Units

Inches (")

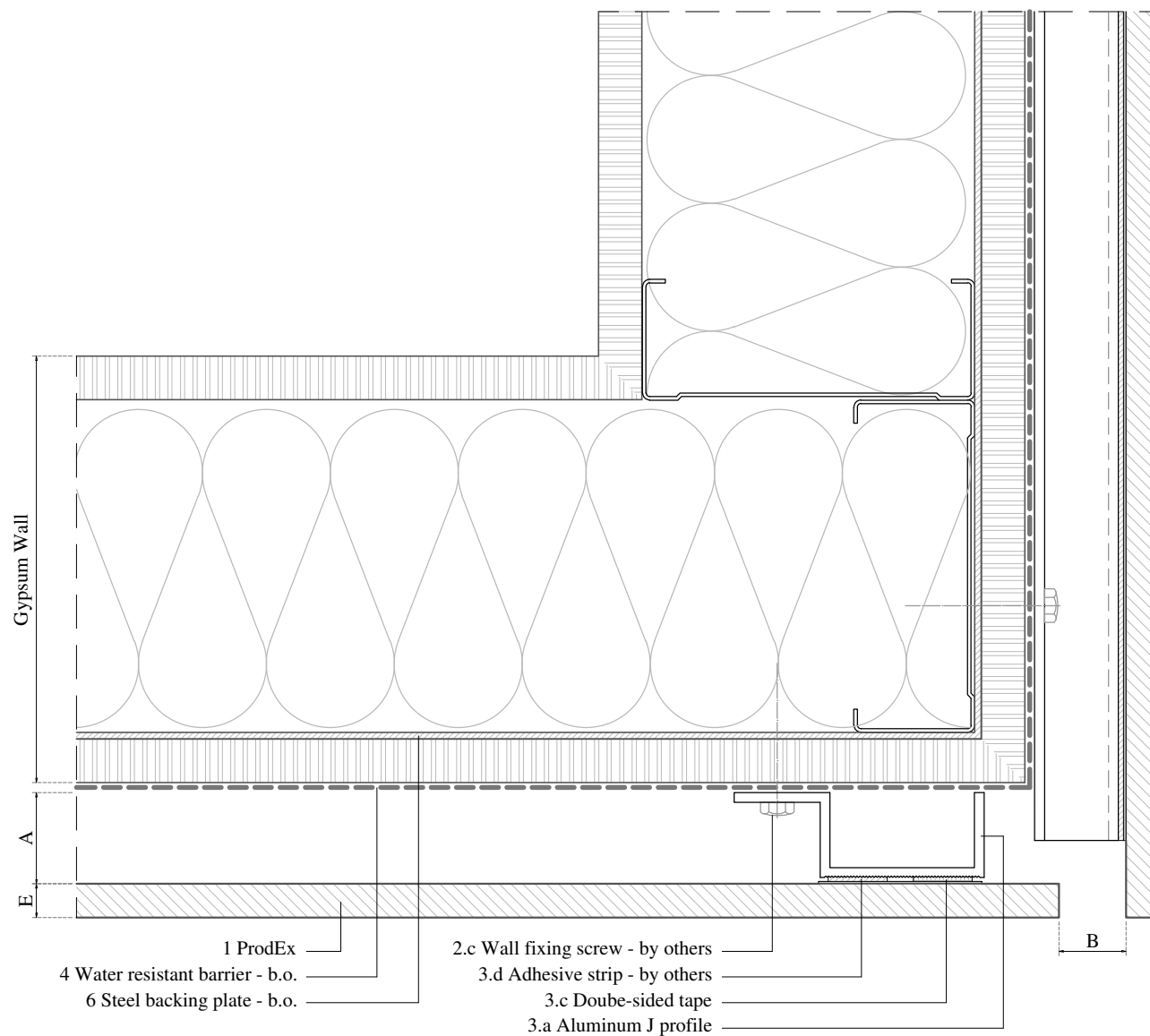
The updated version of this
present installation detail can
be found on the Prodema web.

Plan code

PREX 1-05-A-K

Page

13



E	Panel thickness $\geq 5/16"$ (8mm)	
B	Circulation of air $\geq 3/4"$ (20mm)	
A	Required min. air chamber $\geq 3/4"$ (20mm)	
6	Steel backing plate - by others	
4	Water resistant barrier - by others	
3.d	Adhesive strip - by others	+ primer
3.c	Double-sided tape	
3.a	Aluminum J profile	
3	Profiles	
2.c	Wall fixing screw - by others	
2	Screws	
1	ProdEx	

Measurements in inches are approximated.
Real measurements in mm.



Project

**CONCEALED FASTENING WITH ADHESIVE,
WITH BACKING PLATE**

Plan

**DETAIL L
TRANSVERSAL SOFFIT**

Prodema
NATURAL WOOD BEAUTY

Product

PRODEX

Units

Inches (")

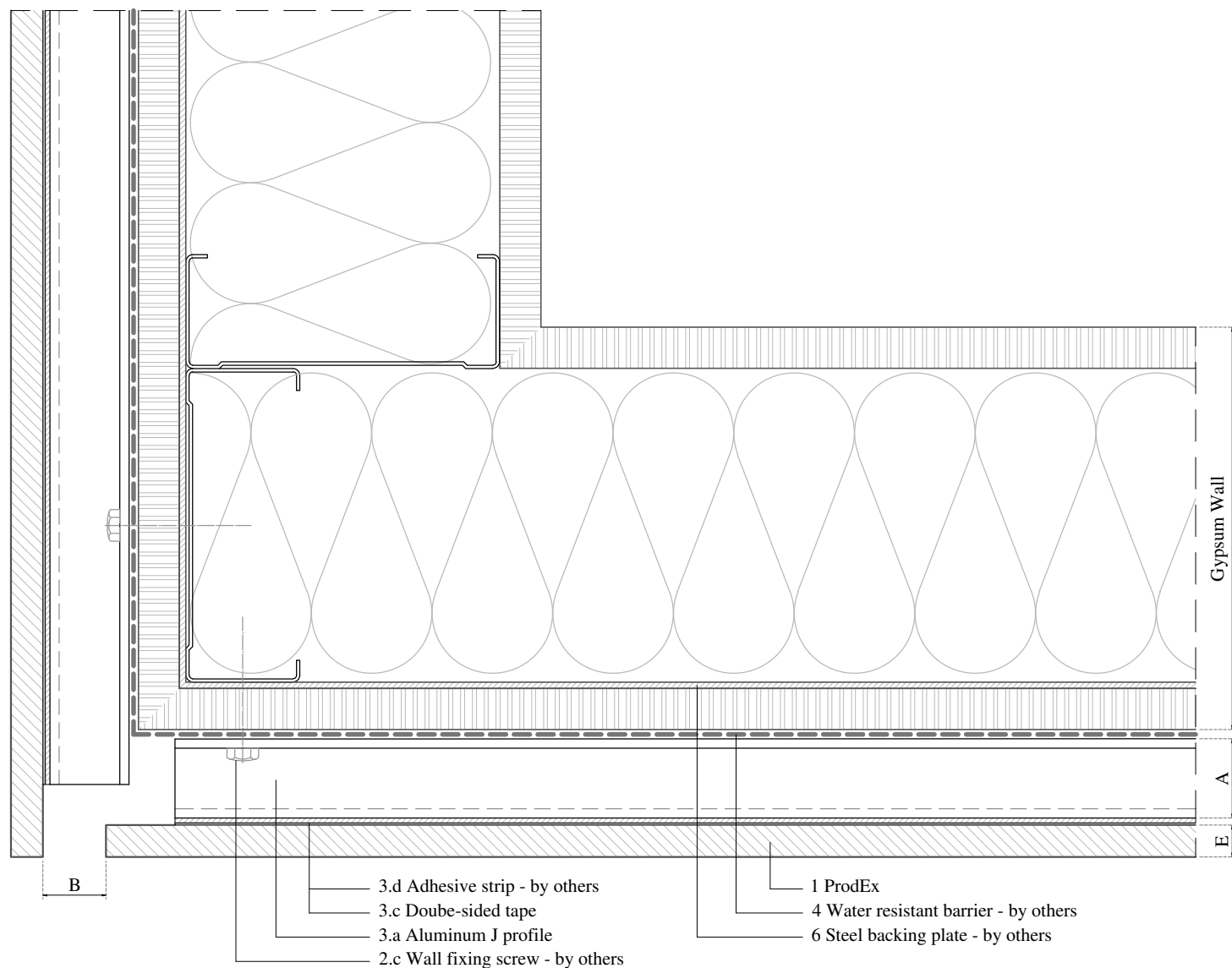
The updated version of this
present installation detail can
be found on the Prodema web.

Plan code

PREX 1-05-A-L

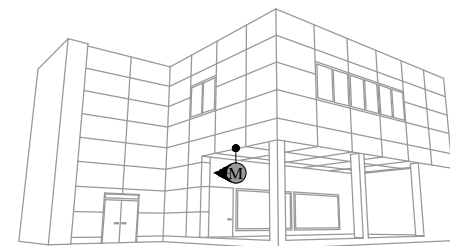
Page

14



E	Panel thickness $\geq 5/16"$ (8mm)	
B	Circulation of air $\geq 3/4"$ (20mm)	
A	Required min. air chamber $\geq 3/4"$ (20mm)	
6	Steel backing plate - by others	
4	Water resistant barrier - by others	
3.d	Adhesive strip - by others	+ primer
3.c	Double-sided tape	
3.a	Aluminum J profile	
3	Profiles	
2.c	Wall fixing screw - by others	
2	Screws	
1	ProdEx	

Measurements in inches are approximated.
Real measurements in mm.



Project

**CONCEALED FASTENING WITH ADHESIVE,
WITH BACKING PLATE**

Plan

**DETAIL M
LONGITUDINAL SOFFIT**

Prodema
NATURAL WOOD BEAUTY

Product

PRODEX

Units

Inches (")

The updated version of this
present installation detail can
be found on the Prodema web.

Plan code

PREX 1-05-A-M

Page

15