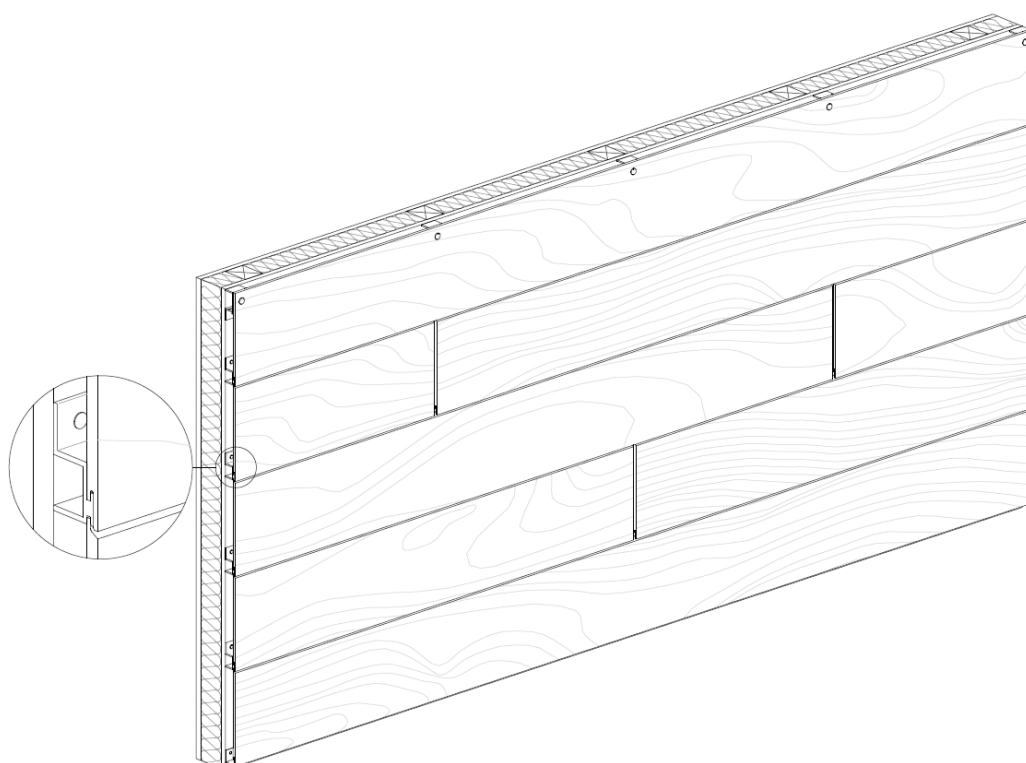


ONESIDING



PARKLEX PRODEMA

INSTALLATION SYSTEM

PARKLEX PRODEMA

CONTENT

0. Intro	3
1. Installation	4
A. Façade application Horizontal layout	4
1. Preparing the area	4
2. Starter rail.....	4
3. First board	4
4. Onesiding clips and the gauge tool.....	4
5. Fastening the Onesiding clips to the supporting element	4
6. Distances between Onesiding clips	4
7. Distances between the Onesiding clips and the edge of the panel	4
8. Apply adhesive on the Onesiding clips	4
9. Boards	4
10. Top of the façade	4
B. Façade application Vertical layout.....	7
1. Preparing the area	7
2. L30X30 Stopper rail	7
3. Align vertically the Onesiding clips.....	7
4. First board	7
5. Onesiding clips and the gauge tool.....	7
6. Fastening the Onesiding clips to the supporting element	7
7. Distances between Onesiding clips	7
8. Distances between the Onesiding clips and the edge of the panel	7
9. L30X30 Stopper piece	7
10. L30X30 Stopper piece	7
11. End of the façade	7
C. Soffit application	11
1. Preparing the area.....	11
2. Starter rail	11
3. One fixed point per board. Apply adhesive on the Starter rail.	11
4. First board	11
5. Onesiding clips and the gauge tool	11
6. Fastening the Onesiding clips to the supporting element	11
7. Distances between Onesiding clips.....	11
8. Distances between the Onesiding clips and the edge of the panel ..	11
9. Apply adhesive on the Onesiding clips	11
10. Boards	11
11. End of the soffit.....	11

* This document contains instructions on installation. For satisfactory installation, all instructions on transport, storage, handling, cleaning and maintenance described in the Walls and Ceilings catalogue must be followed.

** The most current version of these instructions is available on the PARKLEX PRODEMA website (www.parklexprodema.com).

*** Measurements in inches are approximate. Real measures are in mm.

PARKLEX PRODEMA

0. INTRO

BOARDS

This installation system is valid for 96"x11.42", 96"x7.40", 96"x5.35" and 96"x3.39" boards and it is made of either 8mm NATURSIDING or 8mm NATURSOFFIT panels. It can be attached directly to the supporting sub frame behind using the material in any of these three specific applications:

- Façade application – horizontal layout.
- Façade application - vertical layout
- Soffit application

ACCESORIES

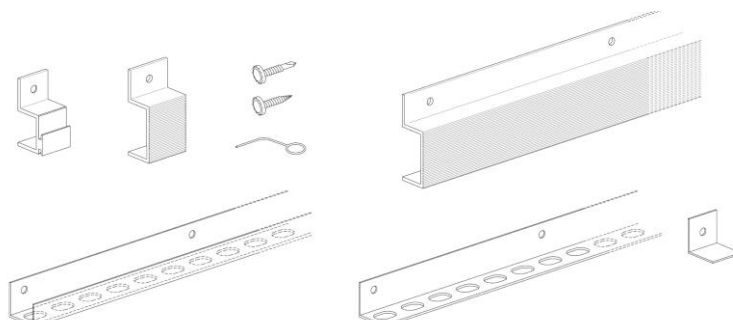
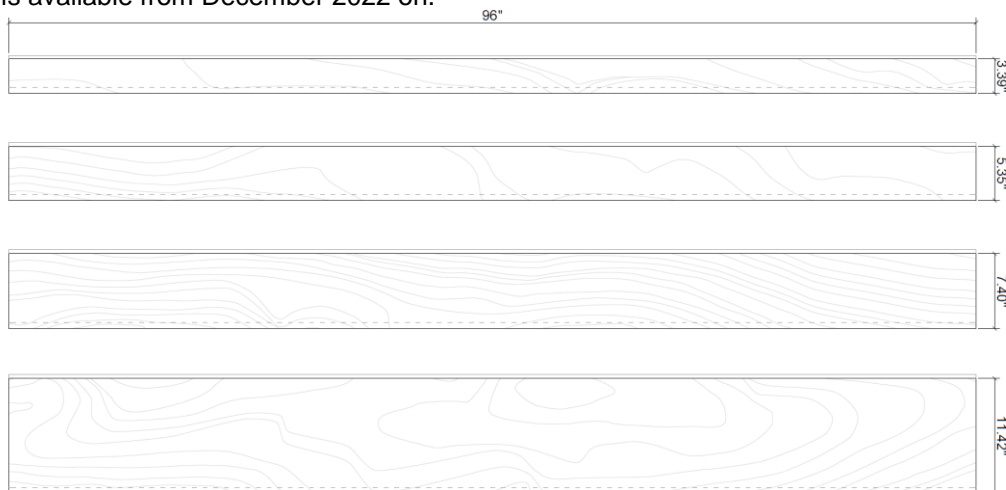
This installation system is composed of different items depending on the application. Accessories needed for soffits and horizontal layouts on façades:

- Onesiding clip
- Jays
- Starter rail*
- 1" Jay shim
- SX3 screws
- Gauge tool
- Elastic Adhesive (by others)

Accessories needed for vertical layouts on façades:

- Onesiding clip
- Jays
- L30X30 Stopper rail*
- L30X30 Stopper piece
- SX3 screws
- Gauge tool

*Items available from December 2022 on.



PARKLEX PRODEMA

1. INSTALLATION

A. FAÇADE APPLICATION HORIZONTAL LAYOUT

1. Preparing the area

The sub frame / wall behind must be totally aligned to avoid the panel copies the imperfections of the supporting surface.

2. Starter rail

Install the Starter rail at the bottom of the façade fastening it to the supporting wall at a maximum distance of 24" between fasteners and making sure it is totally aligned. The maximum cantilever distance for the Starter rail is 4" (100mm).

3. One fixed point per board. Apply adhesive on the Starter rail.

Every board needs at least one fixed point to avoid pieces moving freely. Add a bit of adhesive for the first board on the starter rail.

4. First board

Insert the Starter rail tongue into the first board groove.

5. Onesiding clips and the gauge tool

Install the first row of Onesiding clips on the installed board, using the gauge tool in order to create a 1mm expansion joint between the clip and the board.

6. Fastening the Onesiding clips to the supporting element

Use the $\varnothing \frac{1}{4}$ " hole on the Onesiding clip to fasten it to the sub frame behind. The fastener will depend on the material substrate and it must be provided by others.

7. Distances between Onesiding clips

The clips must be installed at least every 24". Pieces shorter than 24" need a third supporting point in the middle.

8. Distances between the Onesiding clips and the edge of the panel

The distance between the Onesiding clips and the edge of the panel must be between $\frac{3}{4}$ " and 1 $\frac{1}{2}$ ".

9. Apply adhesive on the OneSiding clips

Add a bit of adhesive at least in one of the Onesiding clips per board to avoid the pieces moving freely.

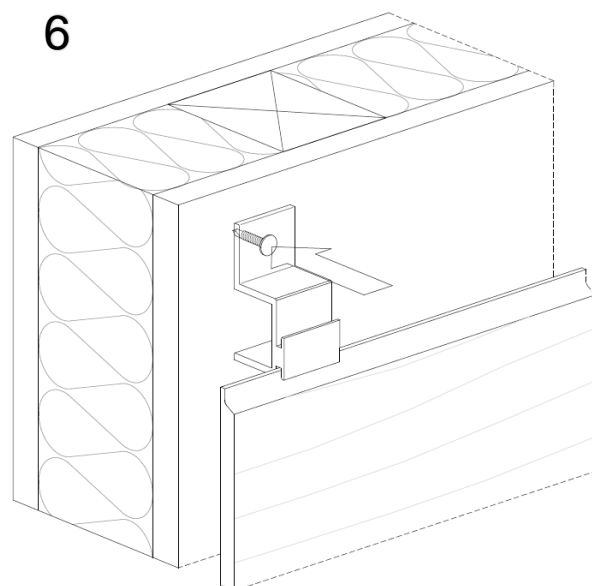
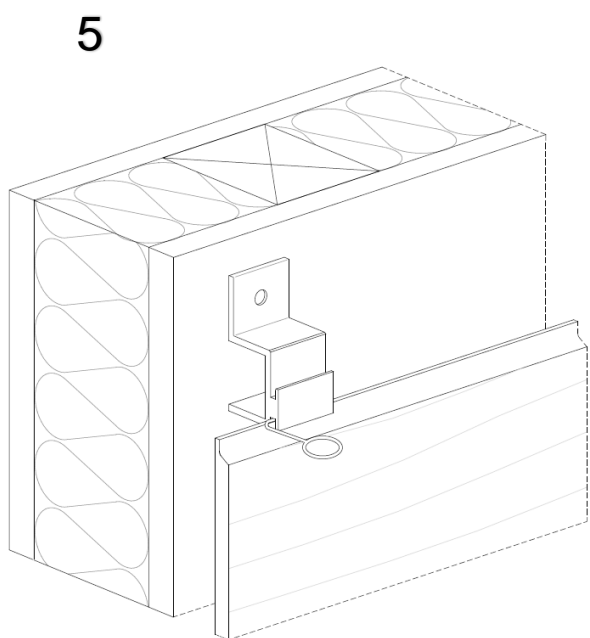
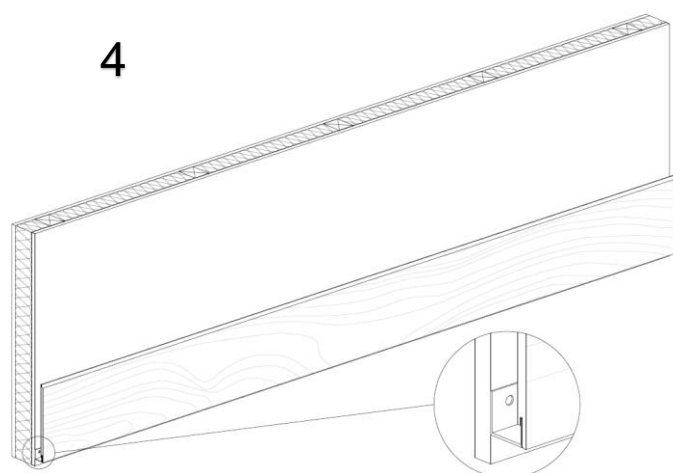
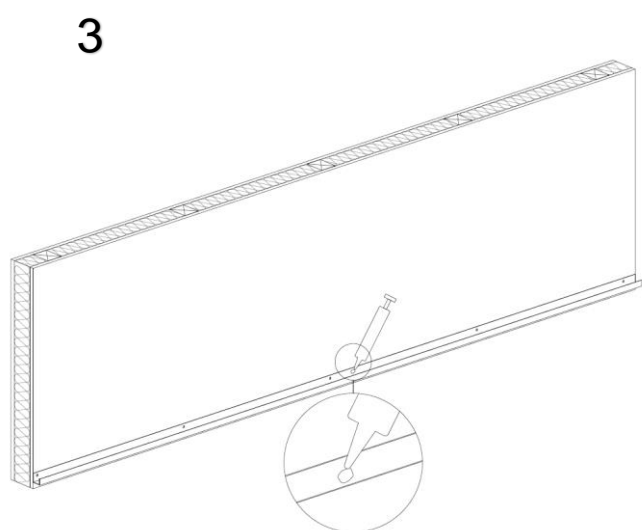
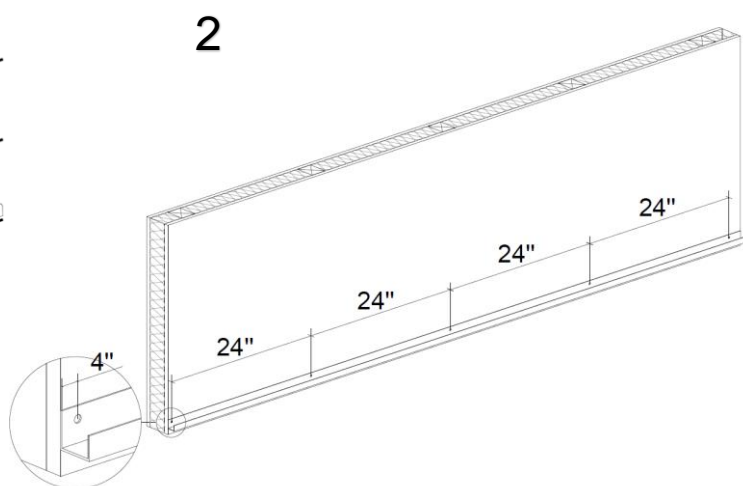
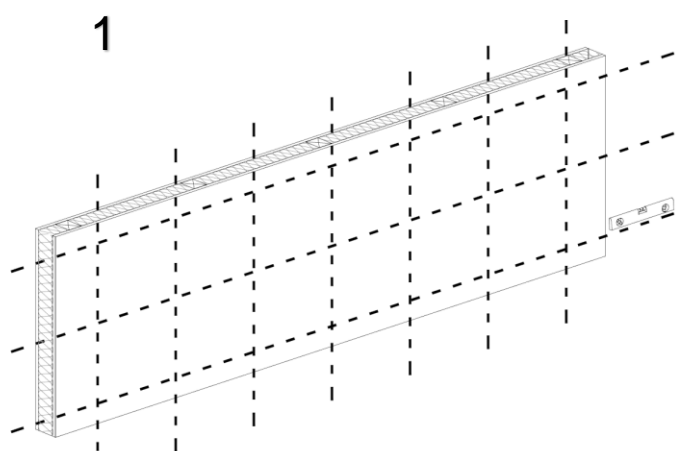
10. Boards

Install the rest of the boards on top of the first following the same process.

11. Top of the façade

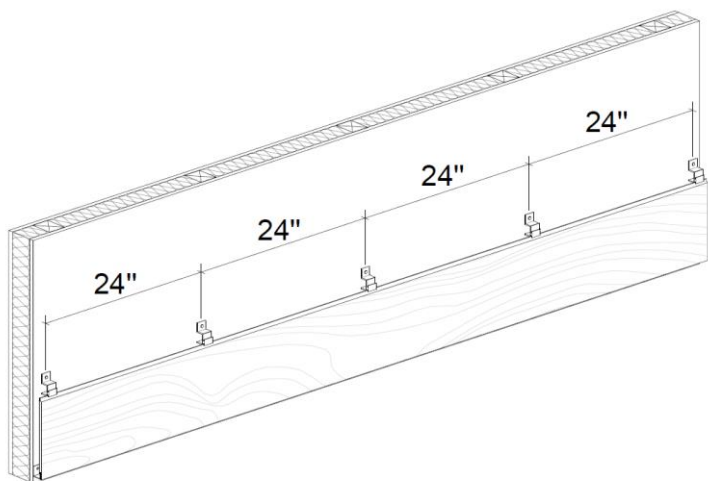
Cut the last board to finish the façade. Use 1" Jay Shims to shim the façade. Do not use continuous rails to attach the last board at the top, which may block the airflow behind the panel.

PARKLEX PRODEMA

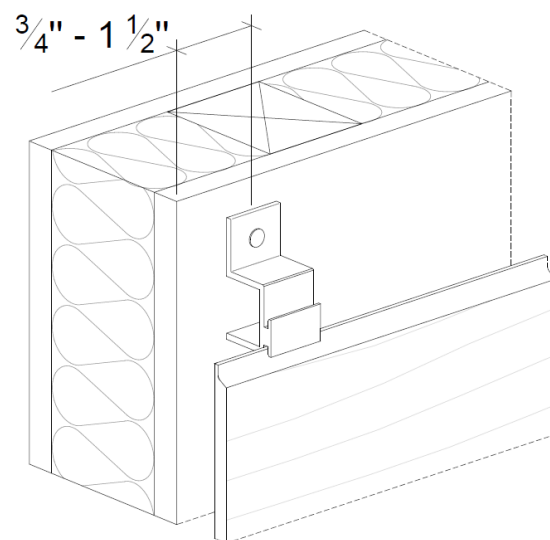


PARKLEX PRODEMA

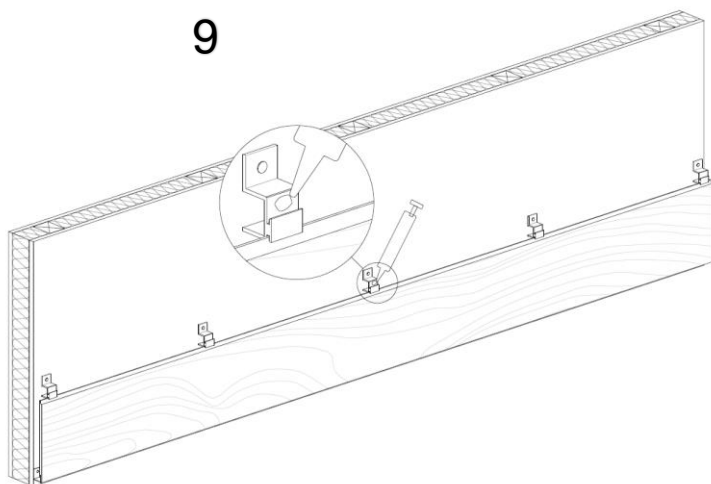
7



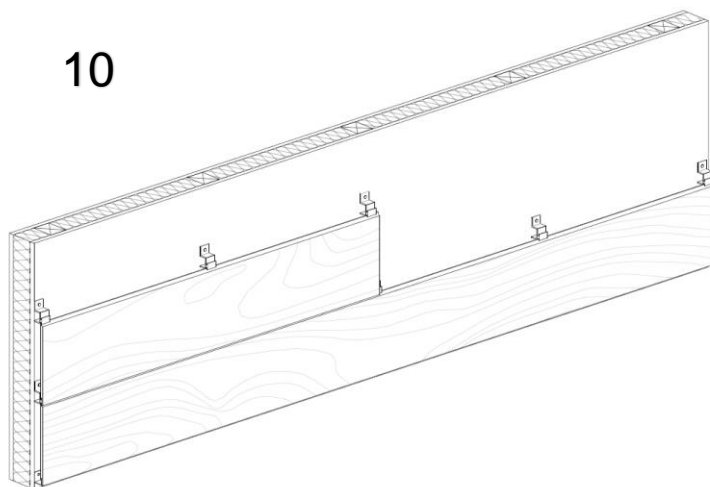
8



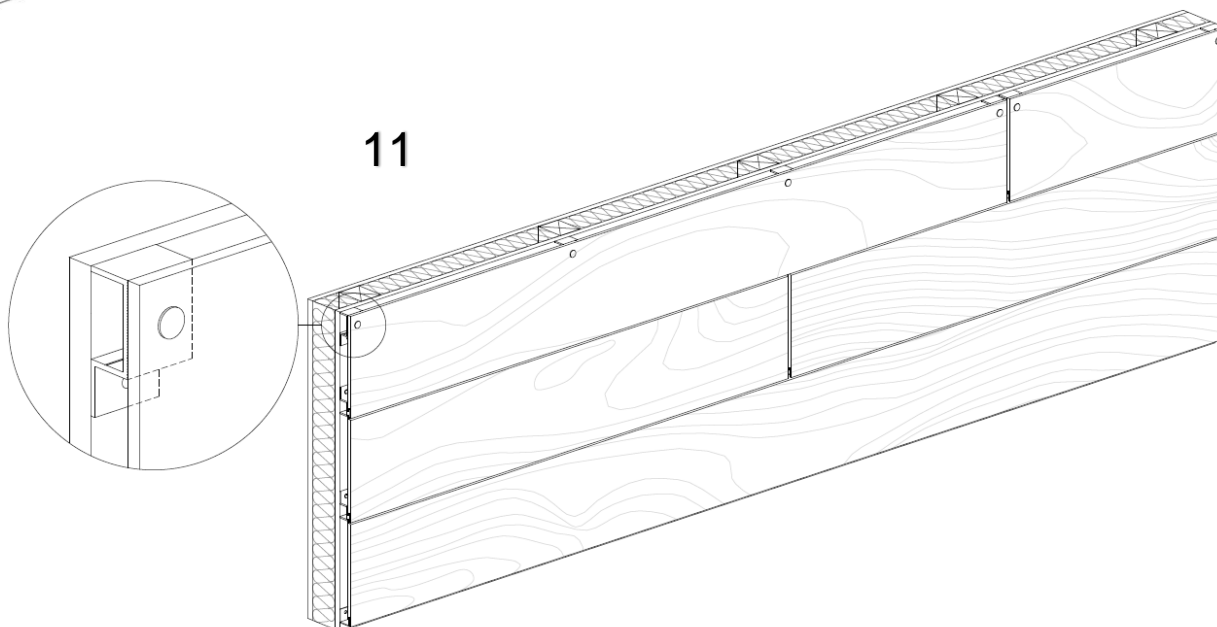
9



10



11



PARKLEX PRODEMA

B. FAÇADE APPLICATION VERTICAL LAYOUT

1. Preparing the area

The subframe/wall behind must be totally aligned to avoid the panel copies the imperfections of the supporting surface.

2. L30X30 Stopper rail

Install the L30X30 Stopper rail at the bottom of the façade fastening it to the supporting wall at a maximum distance of 24" between fasteners and making sure it is totally aligned. The maximum cantilever distance for the L30X30 Stopper rail is 4" (100mm).

3. Align vertically the Onesiding clips

Align the first row of Onesiding clips vertically. The Starter rail supplied for the Horizontal Application can be also used for this step.

4. First board

Insert the Onesiding clip tongue into the first board groove.

5. Onesiding clips and the gauge tool

Install the first row of Onesiding clips on the installed board, using the gauge tool in order to create a 1mm expansion joint between the clip and the board.

6. Fastening the Onesiding clips to the supporting element

Use the $\varnothing \frac{1}{4}$ " hole on the Onesiding clip to fasten it to the subframe behind. The fastener will depend on the material substrate and it must be provided by others.

7. Distances between Onesiding clips

The clips must be installed at least every 24". Pieces shorter than 24" need a third supporting point in the middle.

8. Distances between the Onesiding clips and the edge of the panel

The distance between the Onesiding clips and the edge of the panel must be between $\frac{3}{4}$ " and $1 \frac{1}{2}$ ".

9. L30X30 Stopper piece

Install the L30X30 stopper piece in the intermediate joints to avoid the boards sliding down.

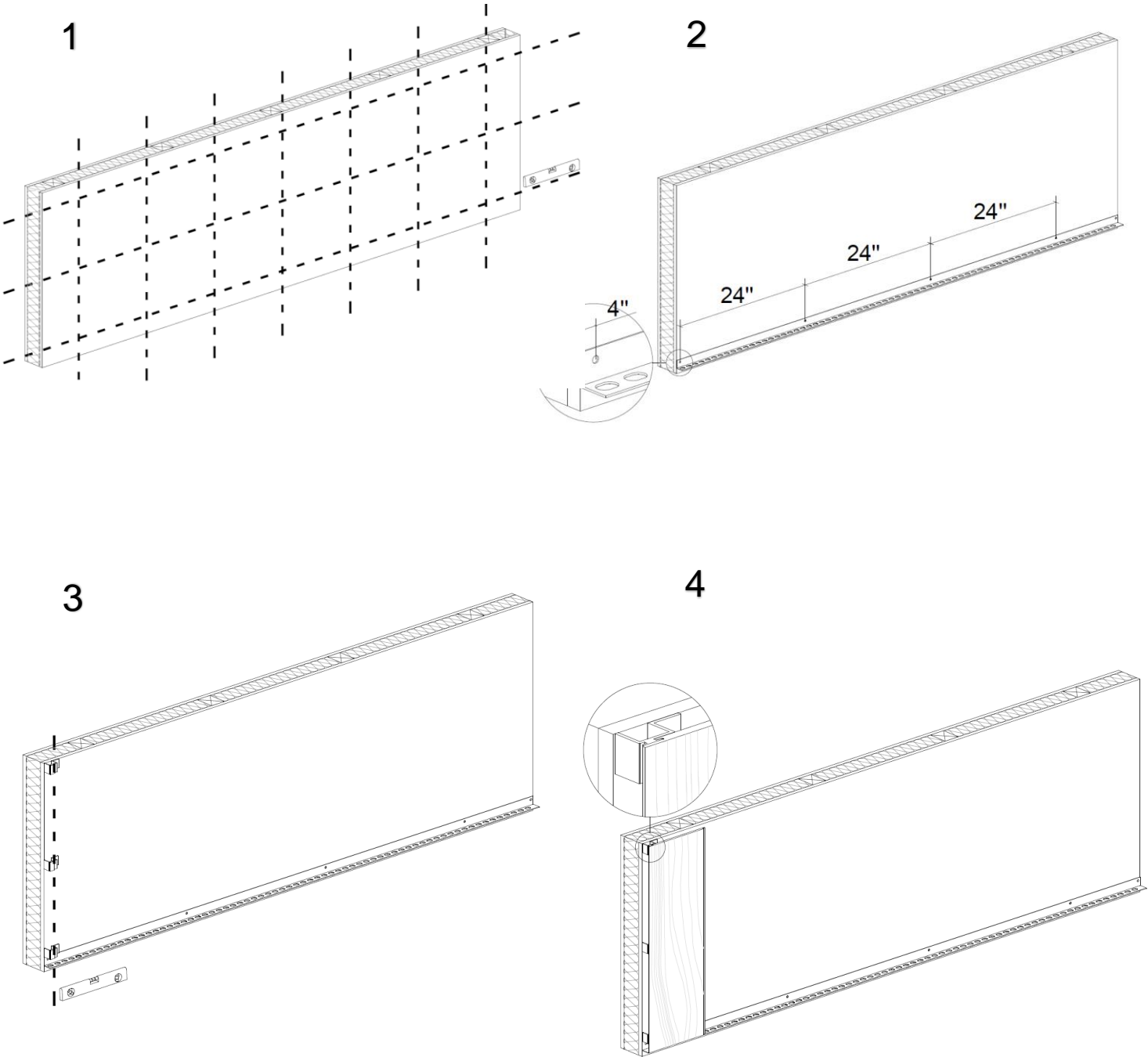
10. L30X30 Stopper piece

Install the rest of the boards following the same process.

11. End of the façade

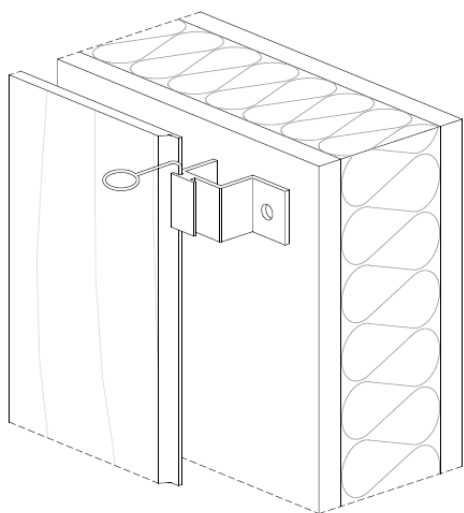
Cut the last board to finish the façade. Use a continuous Jay to shim the façade.

PARKLEX PRODEMA

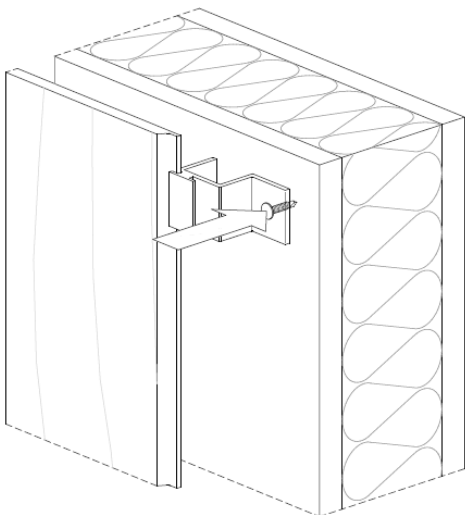


PARKLEX PRODEMA

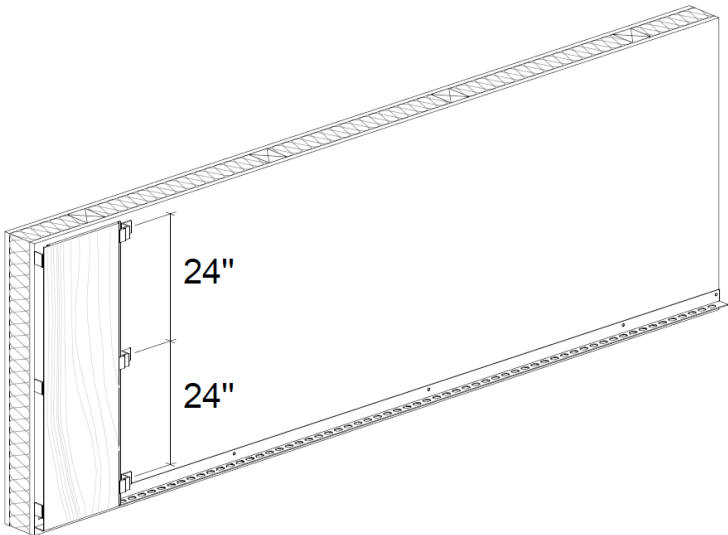
5



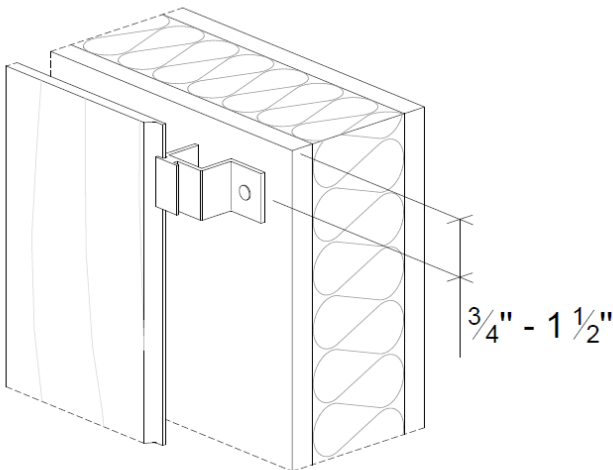
6



7

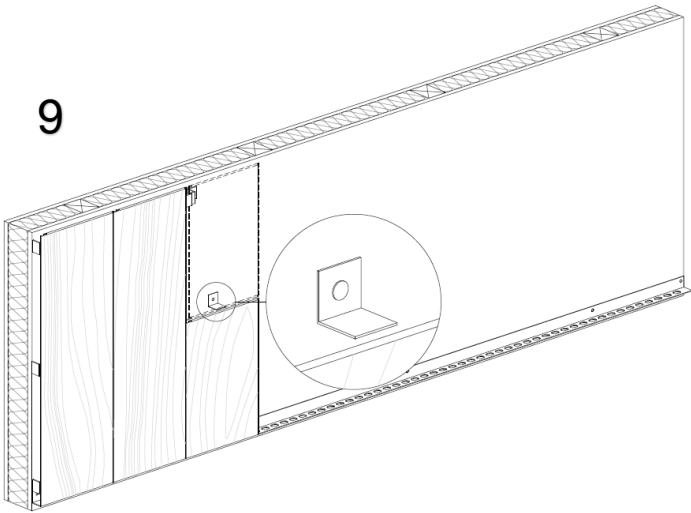


8

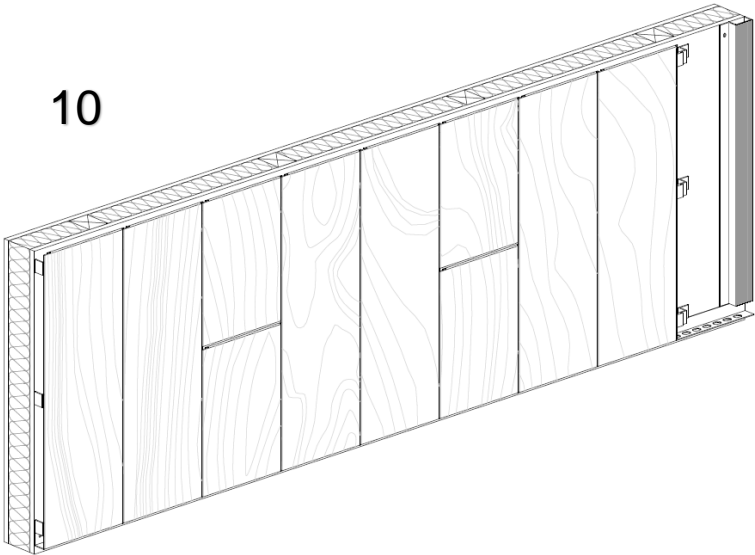


PARKLEX PRODEMA

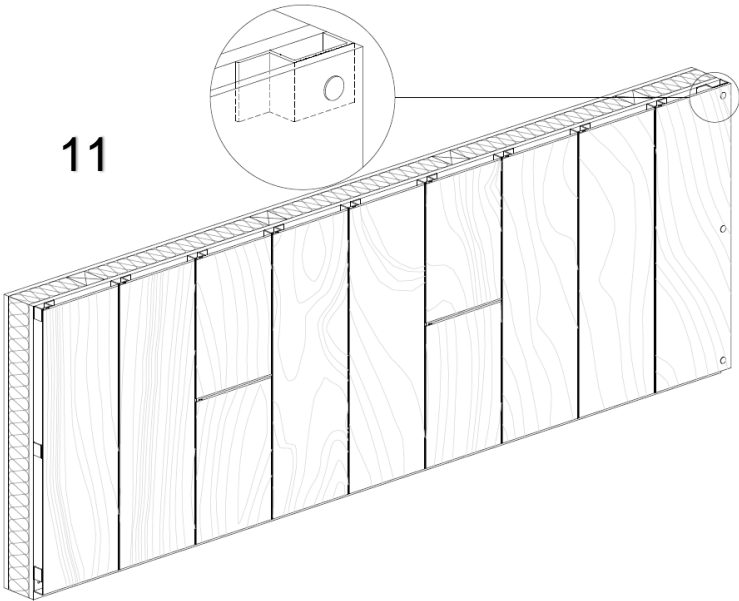
9



10



11



PARKLEX PRODEMA

C. SOFFIT APPLICATION

1. Preparing the area

The ceiling behind must be totally aligned to avoid the panel copies the imperfections of the supporting surface.

2. Starter rail

Install the Starter rail in one side of the façade fastening it to the supporting ceiling at a maximum distance of 24" between fasteners and making sure it is totally aligned. The maximum cantilever distance for the Starter rail is 4" (100mm).

3. One fixed point per board. Apply adhesive on the Starter rail.

Every board needs at least one fixed point to avoid pieces moving freely. Add a bit of adhesive for the first board on the starter rail.

4. First board

Insert the Starter rail tongue into the first board groove.

5. Onesiding clips and the gauge tool

Install the first row of Onesiding clips on the installed board, using the gauge tool in order to create a 1mm expansion joint between the clip and the board.

6. Fastening the Onesiding clips to the supporting element

Use the $\varnothing \frac{1}{4}$ " hole on the Onesiding clip to fasten it to the sub frame behind. The fastener will depend on the material substrate and it must be provided by others.

7. Distances between Onesiding clips

The clips must be installed at least every 24". Pieces shorter than 24" need a third supporting point in the middle.

8. Distances between the Onesiding clips and the edge of the panel

The distance between the Onesiding clips and the edge of the panel must be between $\frac{3}{4}$ " and $1 \frac{1}{2}$ ".

9. Apply adhesive on the Onesiding clips

Add a bit of adhesive at least in one of the Onesiding clips per board to avoid the pieces moving freely.

10. Boards

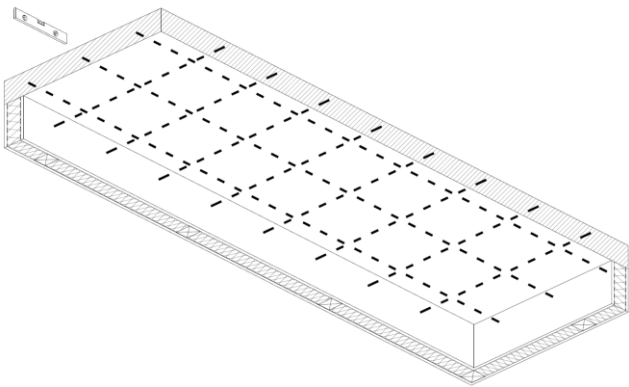
Install the rest of the boards following the same process.

11. End of the soffit

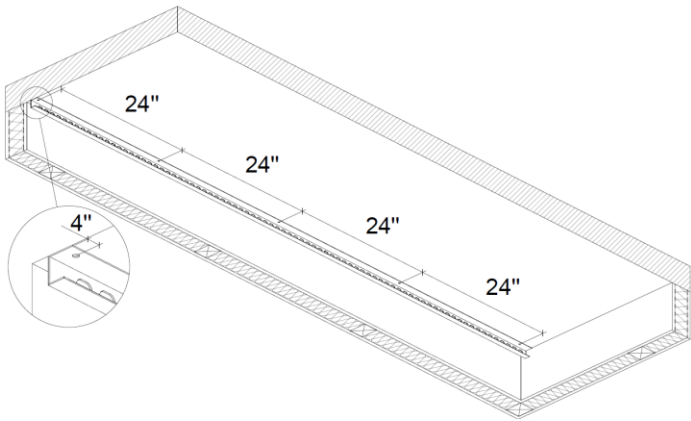
Cut the last board to finish the ceiling. Use 1" Jay Shims to shim the façade. Do not use continuous rails to attach the last board at the top, which may block the airflow behind the panel.

PARKLEX PRODEMA

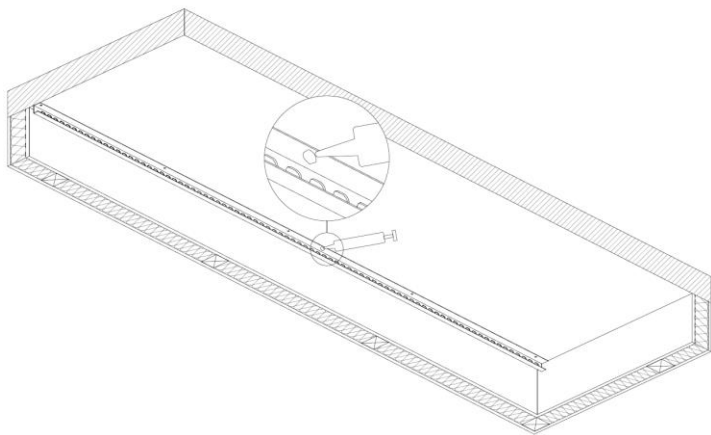
1



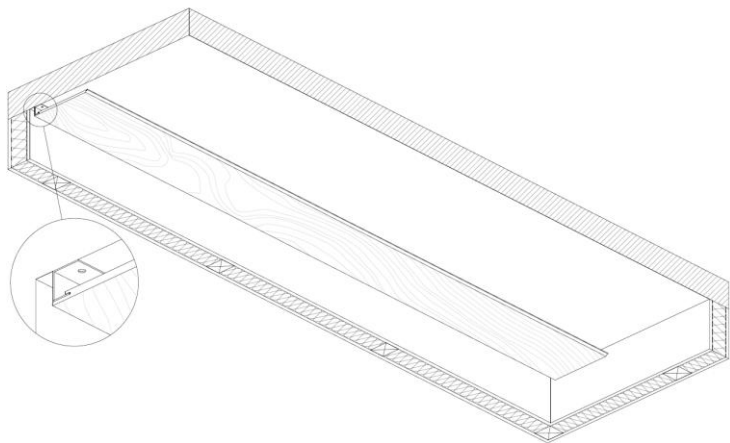
2



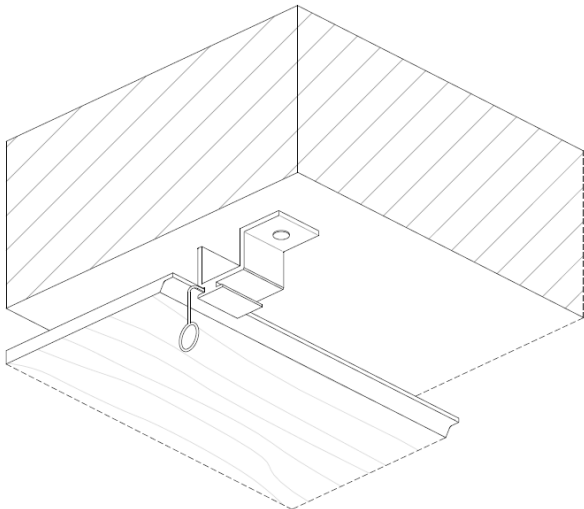
3



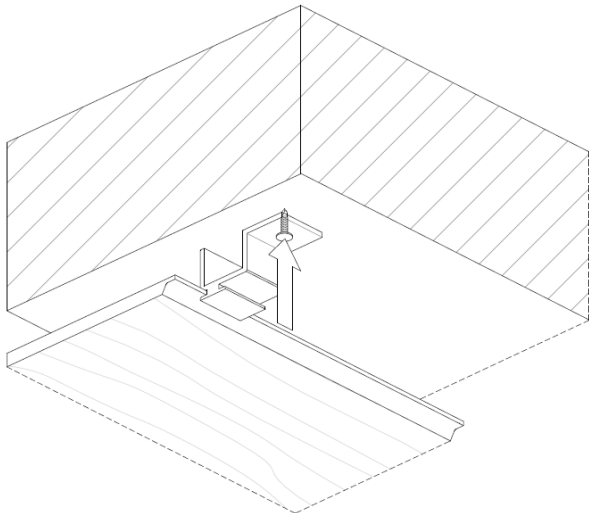
4



5

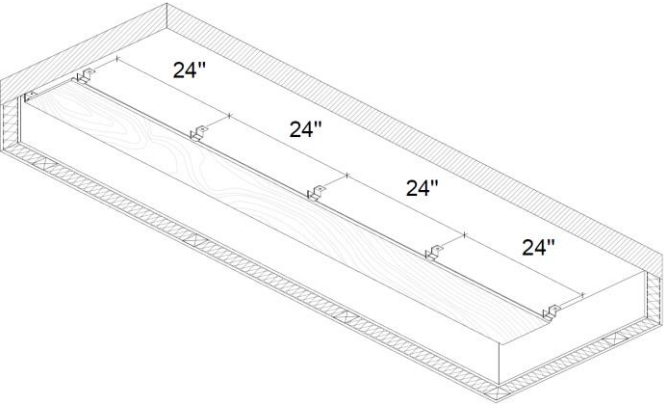


6

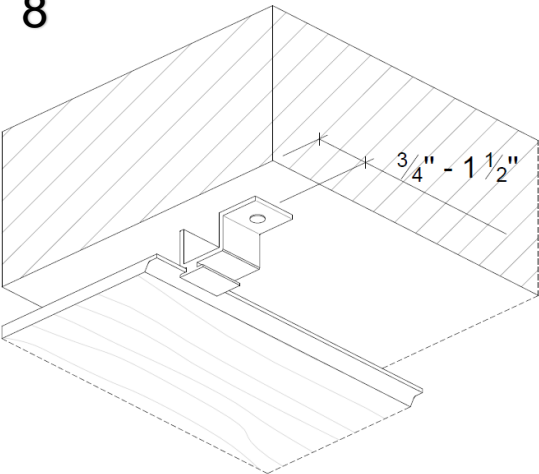


PARKLEX PRODEMA

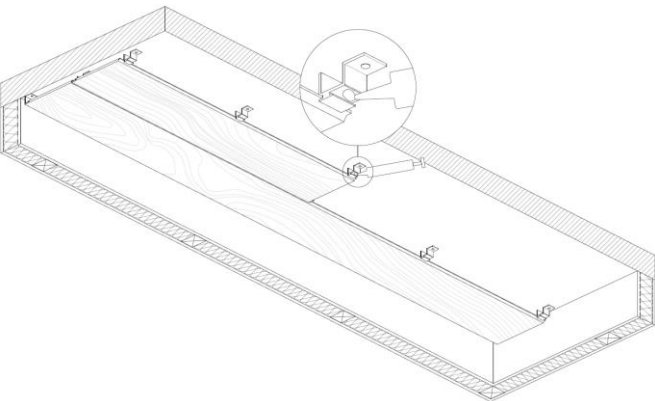
7



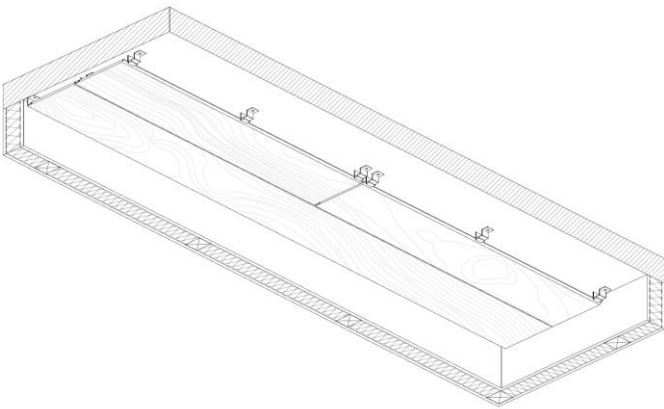
8



9



10



11

