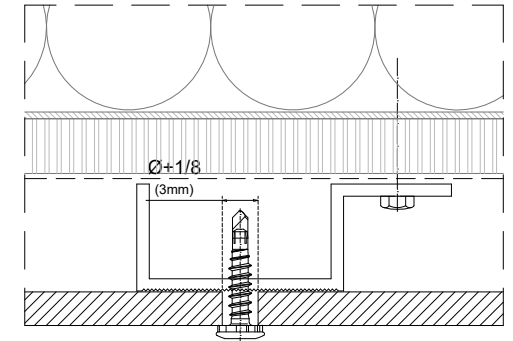


DO NOT OVERTIGHTEN THE SCREW!

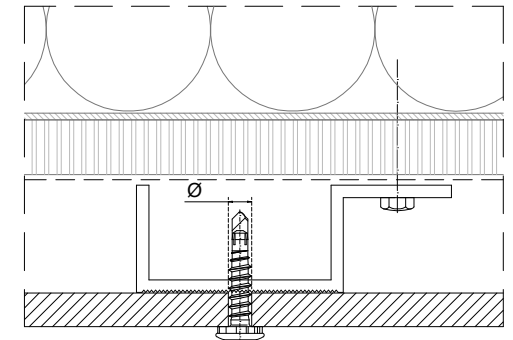
Torque recommendations for SX3 screw:

5Nm to fasten the panel on a 7/64" thick aluminum channel

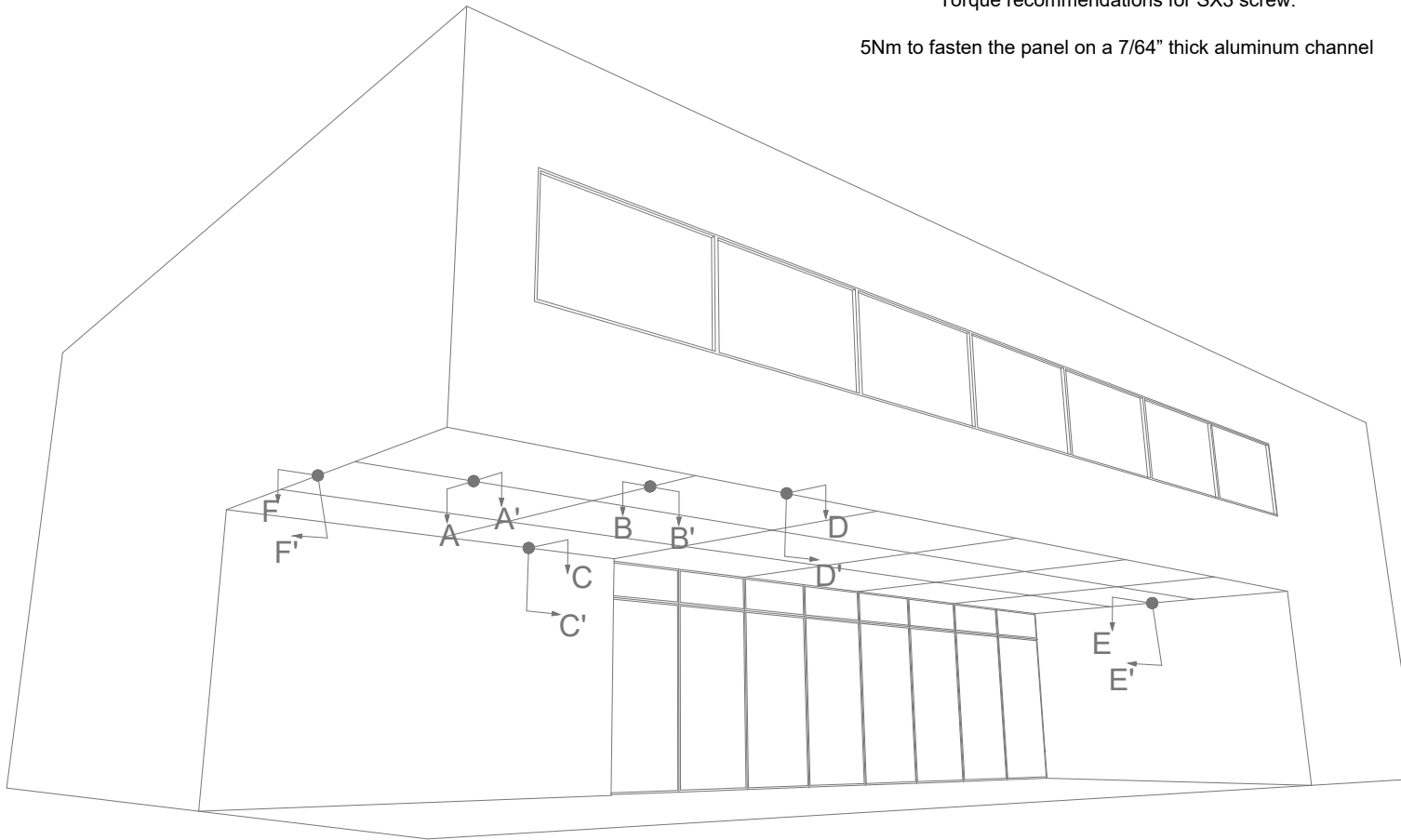
Fixing detail Measures: inch



Floating point



Fixed point



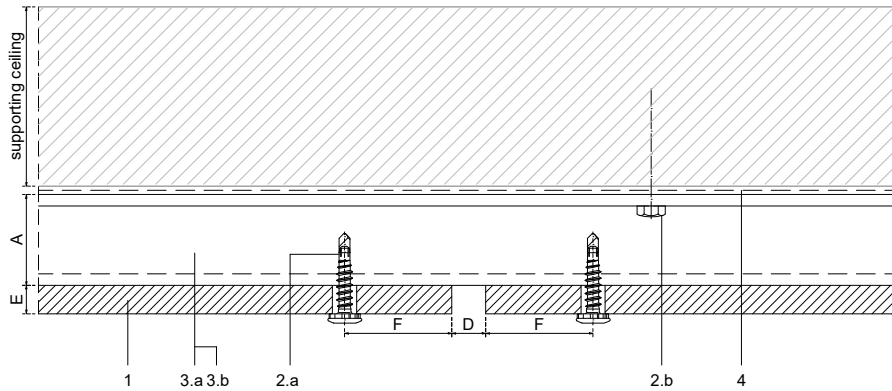
A-A'	JOINT DETAIL (PERP. TO GRAIN DIRECTION)
B-B'	JOINT DETAIL (GRAIN DIRECTION)
C-C'	SOFFIT-WALL INTERIOR DETAIL (PERP. TO GRAIN DIRECTION)
D-D'	SOFFIT-WALL EXTERIOR DETAIL (PERP. TO GRAIN DIRECTION)
E-E'	SOFFIT-WALL INTERIOR DETAIL (GRAIN DIRECTION)
F-F'	SOFFIT-WALL EXTERIOR DETAIL (GRAIN DIRECTION)

Measurements in inches are approximated. Real measurements in mm.

The updated version of this present installation detail can be found on the PARKLEX PRODEMA web. Panel sizes and maximum distances in technical catalogue.

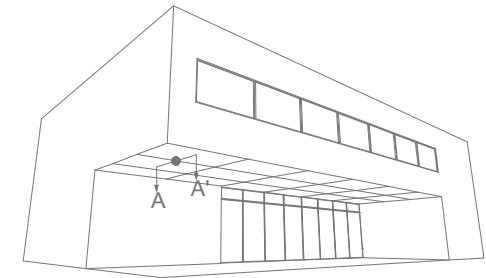
PARKLEX PRODEMA
www.parklexprodema.com

PRODUCT	NATURSOFFIT	SYSTEM	VISIBLE FASTENING WITH SCREW OR RIVETS, SOFFIT SYSTEM	DRAWN BY	Joseba Salbide	DATE	01/2022
PLAN#	NSF1-01-A-G.P.	TITLE	GENERAL PERSPECTIVE	APPROVED BY	Maialen Irastorza	PAGE	1 / 7



1	NATURSOFFIT
2	Screws
2.a	Panel fastener metal
2.b	Wall fixing screw - by others
3	Profiles
3.a	Aluminum J profile
3.b	Aluminum HAT profile
4	Water resistant barrier - by others

A	Required min. air chamber $\geq 3/4"$ (20mm)
B	Circulation of air $\geq 3/4"$ (20mm)
D	Expansion joint $1/4" - 5/16"$ (6-8mm)
E	Panel thickness $\geq 5/16"$ (8mm)
F	Distance from the screws to the panel edges $3/4" - 1 1/2"$ (20-40mm)

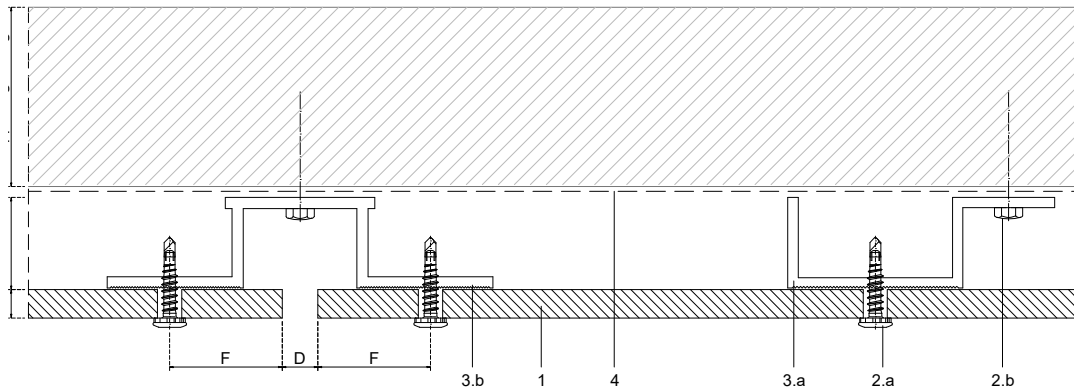


Measurements in inches are approximated. Real measurements in mm.

Scale 1:2

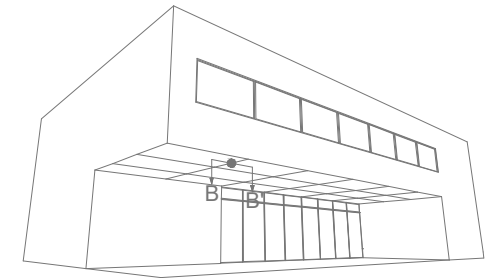
Measures: inch

PARKLEX PRODEMA www.parklexprodema.com	PRODUCT	SYSTEM	DRAWN BY	DATE
	NATURSOFFIT	VISIBLE FASTENING WITH SCREW OR RIVETS, SOFFIT SYSTEM	Joseba Salbide	01/2022
	PLAN#	TITLE	APPROVED BY	PAGE
	NSF1-01-A-A	DETAIL A-A' // JOINT DETAIL (PERP. TO GRAIN DIRECTION)	Maialen Irastorza	2 / 7



1	NATURSOFFIT
2	Screws
2.a	Panel fastener metal
2.b	Wall fixing screw - by others
3	Profiles
3.a	Aluminum J profile
3.b	Aluminum HAT profile
4	Water resistant barrier - by others


A	Required min. air chamber $\geq 3/4"$ (20mm)
B	Circulation of air $\geq 3/4"$ (20mm)
D	Expansion joint $1/4" - 5/16"$ (6-8mm)
E	Panel thickness $\geq 5/16"$ (8mm)
F	Distance from the screws to the panel edges $3/4" - 1 1/2"$ (20-40mm)

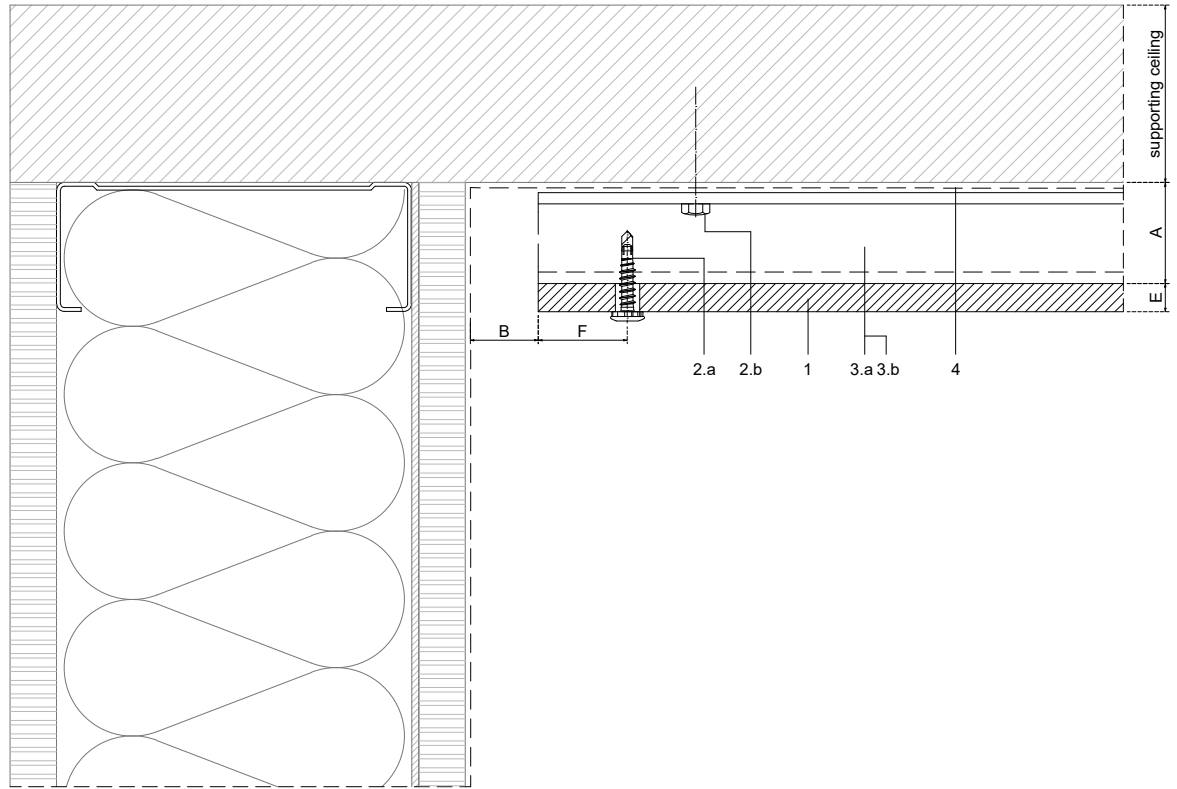


Measurements in inches are approximated. Real measurements in mm.

Scale 1:2

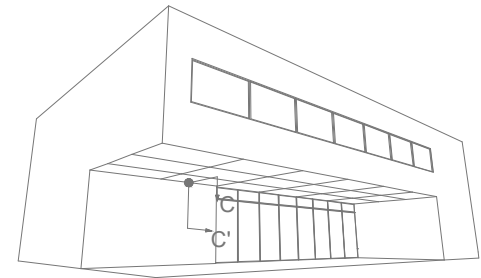
Measures: inch

 www.parklexprodema.com	PRODUCT	SYSTEM	DRAWN BY	DATE
	NATURSOFFIT	VISIBLE FASTENING WITH SCREW OR RIVETS, SOFFIT SYSTEM	Joseba Salbide	01/2022
PLAN#	TITLE	APPROVED BY	PAGE	
NSF1-01-A-B	DETAIL B-B' // JOINT DETAIL (GRAIN DIRECTION)	Maialen Irastorza	3 / 7	



1	NATURSOFFIT
2	Screws
2.a	Panel fastener metal
2.b	Wall fixing screw - by others
3	Profiles
3.a	Aluminum J profile
3.b	Aluminum HAT profile
4	Water resistant barrier - by others

A	Required min. air chamber $\geq 3/4"$ (20mm)
B	Circulation of air $\geq 3/4"$ (20mm)
D	Expansion joint $1/4" - 5/16"$ (6-8mm)
E	Panel thickness $\geq 5/16"$ (8mm)
F	Distance from the screws to the panel edges $3/4" - 1 1/2"$ (20-40mm)

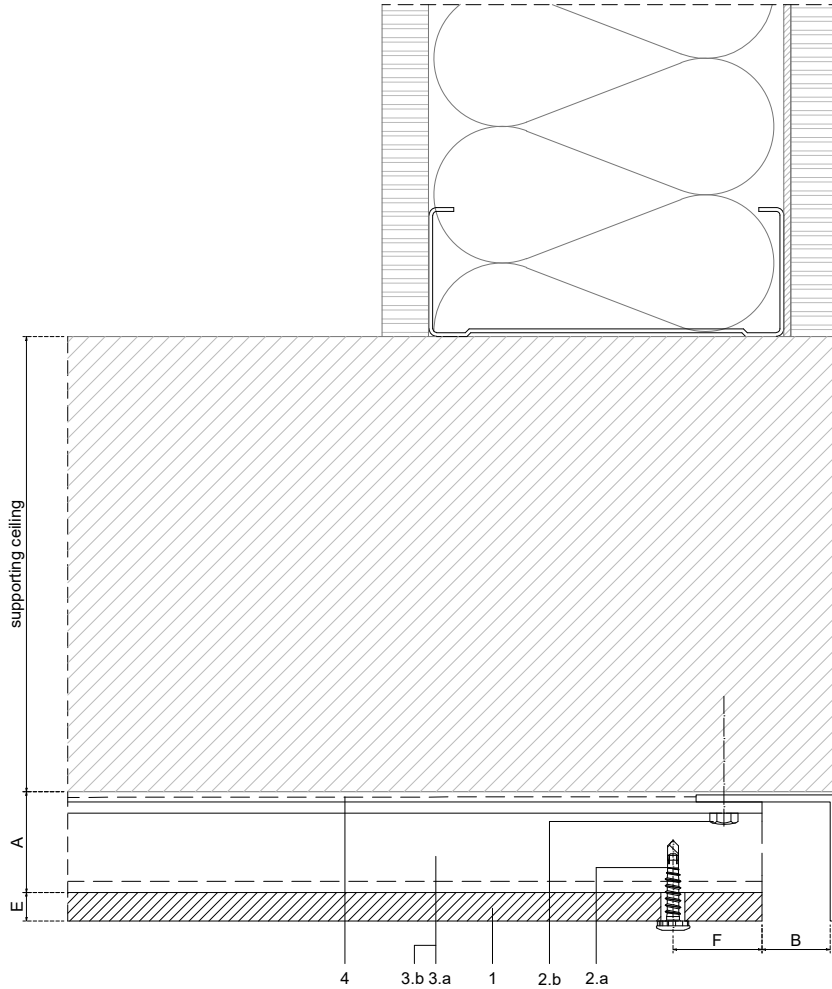


Measurements in inches are approximated. Real measurements in mm.

Scale 1:2

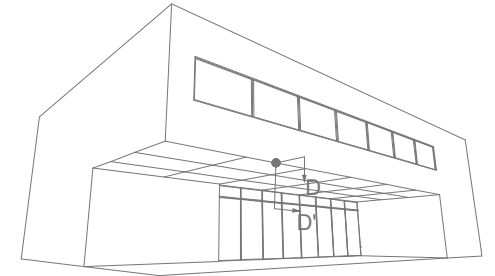
Measures: inch

PARKLEX PRODEMA www.parklexprodema.com	PRODUCT	SYSTEM	DRAWN BY	DATE
	NATURSOFFIT	VISIBLE FASTENING WITH SCREW OR RIVETS, SOFFIT SYSTEM	Joseba Salbide	01/2022
	PLAN#	TITLE	APPROVED BY	PAGE
	NSF1-01-A-C	DETAIL C-C' // SOFFIT-WALL INTERIOR CORNER (PERP. TO GRAIN DIRECTION)	Maialen Irastorza	4 / 7



1	NATURSOFFIT
2	Screws
2.a	Panel fastener metal
2.b	Wall fixing screw - by others
3	Profiles
3.a	Aluminum J profile
3.b	Aluminum HAT profile
4	Water resistant barrier - by others

A	Required min. air chamber $\geq 3/4"$ (20mm)
B	Circulation of air $\geq 3/4"$ (20mm)
D	Expansion joint $1/4" - 5/16"$ (6-8mm)
E	Panel thickness $\geq 5/16"$ (8mm)
F	Distance from the screws to the panel edges $3/4" - 1 1/2"$ (20-40mm)

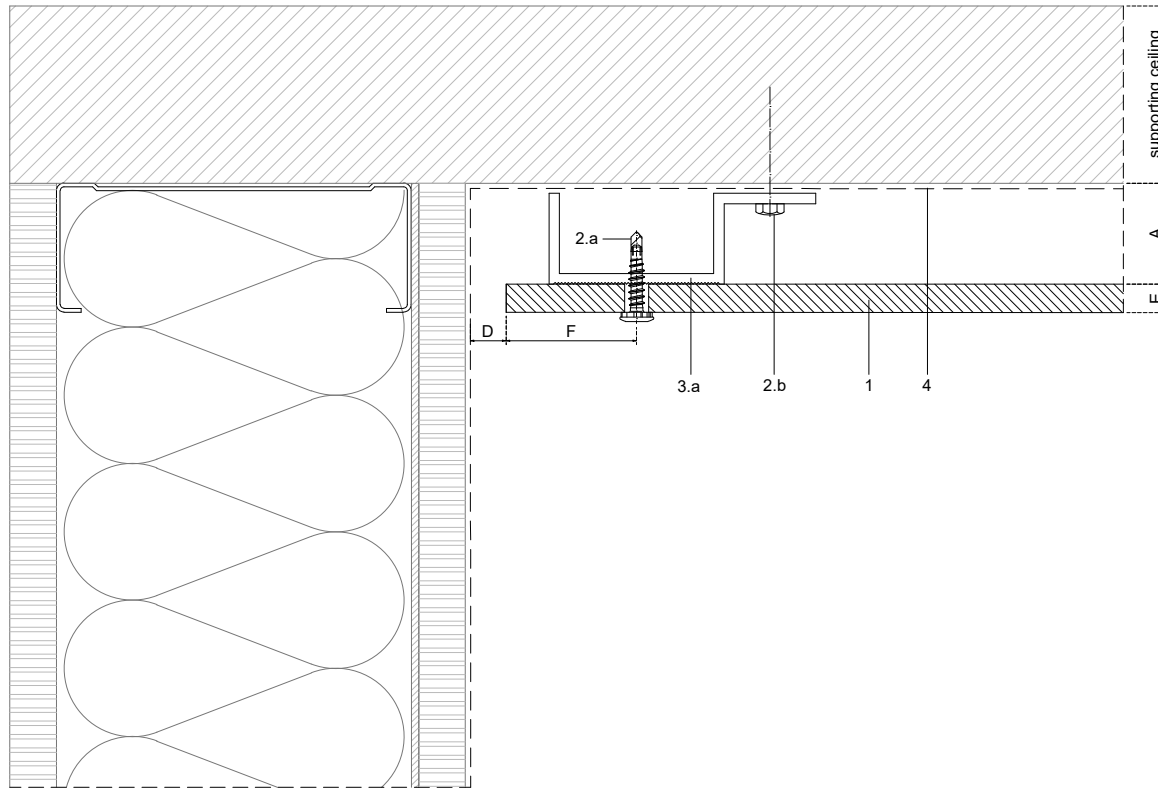


Measurements in inches are approximated. Real measurements in mm.

Scale 1:2

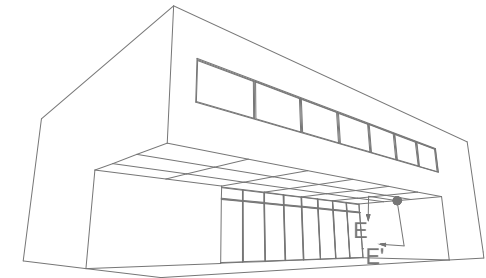
Measures: inch

PARKLEX PRODEMA www.parklexprodema.com	PRODUCT	SYSTEM	DRAWN BY	DATE
	NATURSOFFIT	VISIBLE FASTENING WITH SCREW OR RIVETS, SOFFIT SYSTEM	Joseba Salbide	01/2022
	PLAN#	TITLE	APPROVED BY	PAGE
	NSF1-01-A-D	DETAIL D-D' // SOFFIT-WALL EXTERIOR CORNER (PERP. TO GRAIN DIRECTION)	Maialen Irastorza	5 / 7



1	NATURSOFFIT
2	Screws
2.a	Panel fastener metal
2.b	Wall fixing screw - by others
3	Profiles
3.a	Aluminum J profile
3.b	Aluminum HAT profile
4	Water resistant barrier - by others

A	Required min. air chamber $\geq 3/4"$ (20mm)
B	Circulation of air $\geq 3/4"$ (20mm)
D	Expansion joint $1/4" - 5/16"$ (6-8mm)
E	Panel thickness $\geq 5/16"$ (8mm)
F	Distance from the screws to the panel edges $3/4" - 1 1/2"$ (20-40mm)

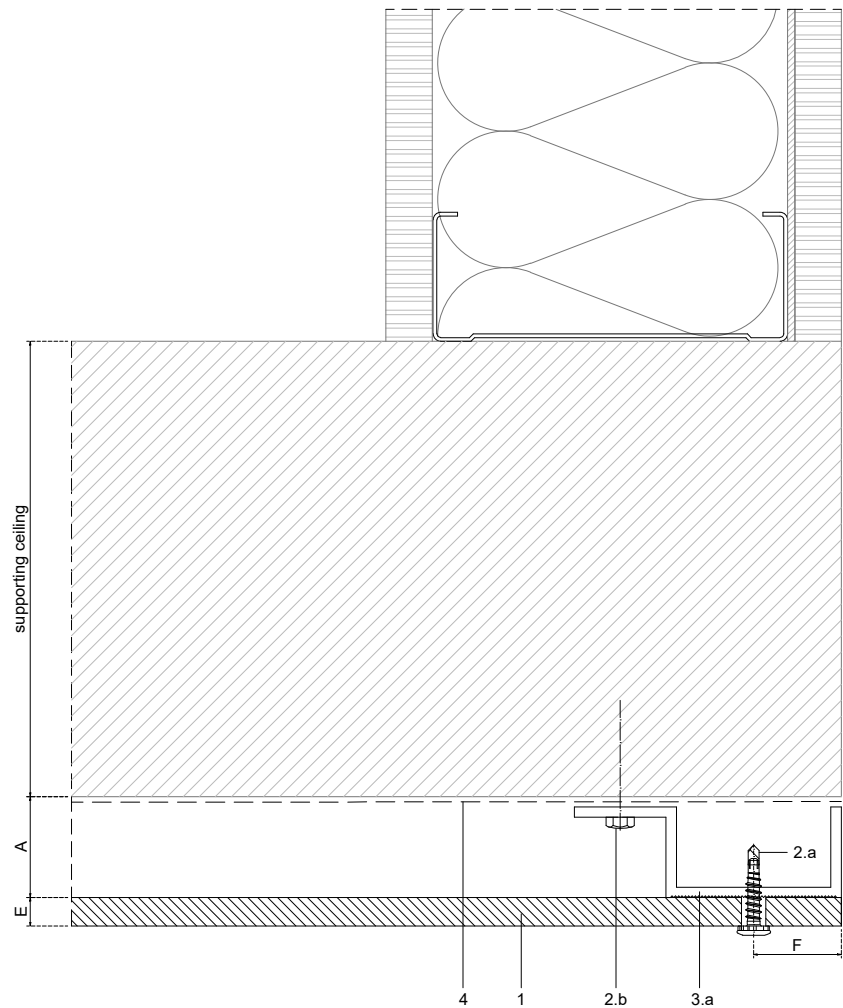


Measurements in inches are approximated. Real measurements in mm.

Scale 1:2

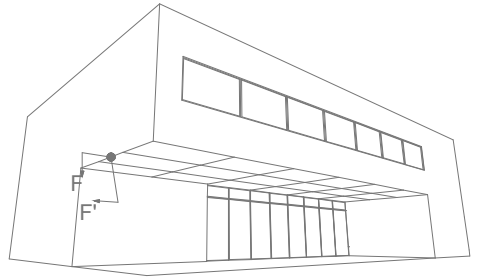
Measures: inch

PARKLEX PRODEMA www.parklexprodema.com	PRODUCT	SYSTEM	DRAWN BY	DATE
	NATURSOFFIT	VISIBLE FASTENING WITH SCREW OR RIVETS, SOFFIT SYSTEM	Joseba Salbide	01/2022
	PLAN#	TITLE	APPROVED BY	PAGE
	NSF1-01-A-E	DETAIL E-E' // SOFFIT-WALL INTERIOR CORNER (GRAIN DIRECTION)	Maialen Irastorza	6 / 7



1	NATURSOFFIT
2	Screws
2.a	Panel fastener metal
2.b	Wall fixing screw - by others
3	Profiles
3.a	Aluminum J profile
3.b	Aluminum HAT profile
4	Water resistant barrier - by others

A	Required min. air chamber $\geq 3/4"$ (20mm)
B	Circulation of air $\geq 3/4"$ (20mm)
D	Expansion joint $1/4" - 5/16"$ (6-8mm)
E	Panel thickness $\geq 5/16"$ (8mm)
F	Distance from the screws to the panel edges $3/4" - 1 1/2"$ (20-40mm)



Measurements in inches are approximated. Real measurements in mm.

Scale 1:2

Measures: inch

PARKLEX PRODEMA www.parklexprodema.com	PRODUCT NATURSOFFIT	SYSTEM VISIBLE FASTENING WITH SCREW OR RIVETS, SOFFIT SYSTEM	DRAWN BY Joseba Salbide	DATE 01/2022
	PLAN# NSF1-01-A-F	TITLE DETAIL F-F // SOFFIT-WALL EXTERIOR CORNER (GRAIN DIRECTION)	APPROVED BY Maialen Irastorza	PAGE 7 / 7