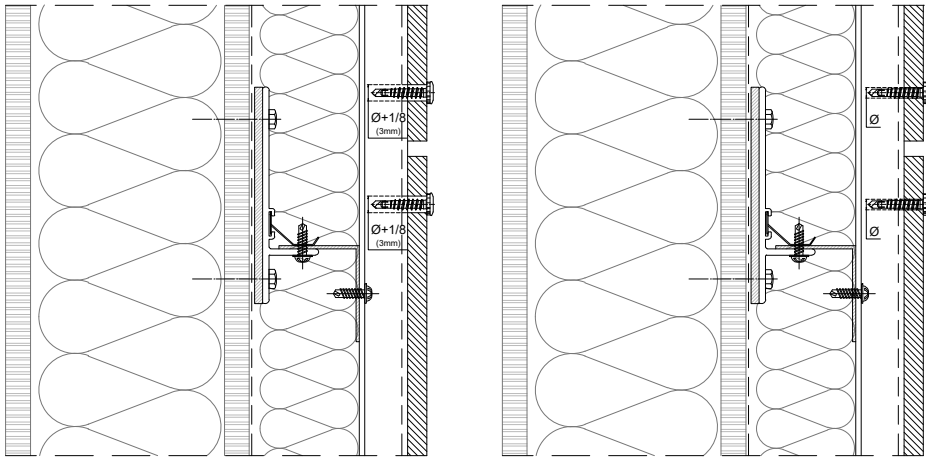


Measurements in inches are approximated. Real measurements in mm.
The updated version of this present installation detail can be found on the PARKLEX PRODEMA web.
Panel sizes and maximum distances in technical catalogue.

DO NOT OVERTIGHTEN THE SCREW!

Torque recommendations for SX3 screw:

5Nm to fasten the panel on a 7/64" thick aluminum channel



Floating point

Fixed point

FIXING DETAIL

MEASURES: INCH

A-A' FAÇADE BASE	H-H' INSIDE CORNER (OPEN JOINT)
B-B' PARAPET CAP	I-I' OUTSIDE CORNER (OPEN JOINT)
C-C' HORIZONTAL JOINT	J-J' DOOR HEAD
D-D' VERTICAL JOINT	K-K' DOOR JAMB
E-E' WINDOW SILL	L-L' VENTILATION DROPPED CEILING
F-F' WINDOW JAMB	M-M' SIDE VENTILATION DROPPED CEILING
G-G' WINDOW HEAD	

PARKLEX PRODEMA
www.parklexprodema.com

PRODUCT
NATURCLAD

PLAN#
NC1-01-C-G.P.

SYSTEM
EXPOSED SCREW FIXING ON ALUMINIUM
NFPA 285

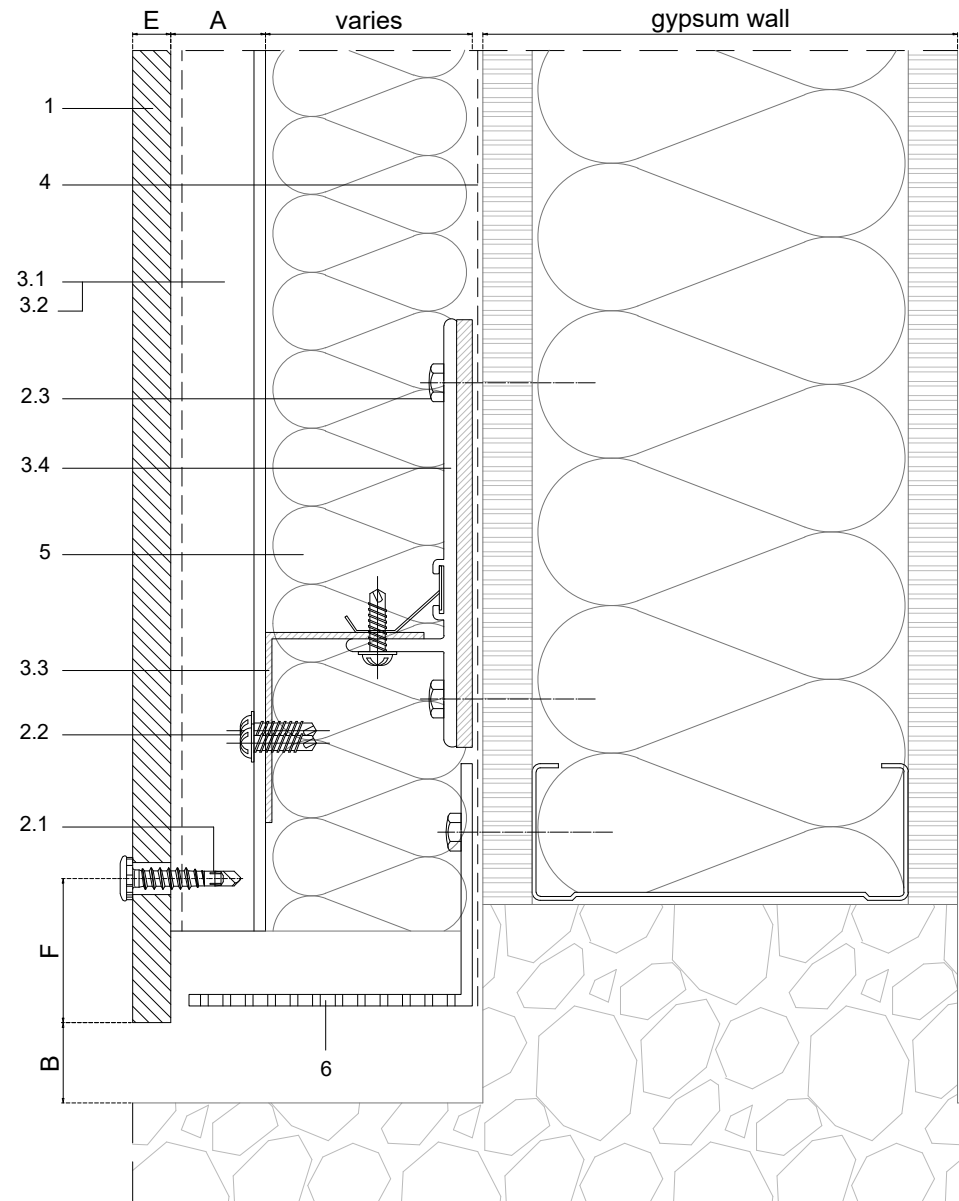
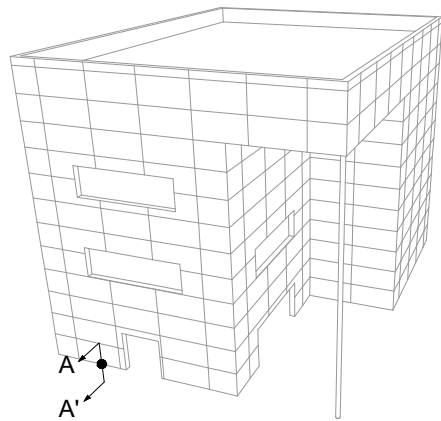
TITLE
GENERAL PERSPECTIVE

DRAWN BY
Joseba Salbide

APPROVED BY
Maialen Irastorza

DATE
01/2022

PAGE
1 / 21



1	NATURCLAD
2	Screws
2.1	Panel fastener metal
2.2	Channel fastener - by others
2.3	Wall fixing screw - by others
3	Profiles
3.1	Aluminum J profile
3.2	Aluminum HAT profile
3.3	Aluminum L profile
3.4	Alum. wall bracket + Insulator pad
3.5	Jamb profile - by others
3.6	Sill profile - by others
3.7	Coronation profile - by others
4	Water resistant barrier - by others
5	Thermal insulation - by others
6	Vent. screen - by others

A	Required min. air chamber $\geq 3/4"$ (20mm)
B	Circulation of air $\geq 3/4"$ (20mm)
D	Expansion joint $1/4" - 3/8"$ (6-10mm)
E	Panel thickness $\geq 5/16"$ (8mm)
F	Distance from the screws to the panel edges $3/4" - 1 1/2"$ (20-40mm)

Measurements in inches are approximated. Real measurements in mm.

Scale 1:2

Measures: inch

PARKLEX PRODEMA
www.parklexprodema.com

PRODUCT
NATURCLAD

PLAN#
NC1-01-C-A

SYSTEM

EXPOSED SCREW FIXING ON ALUMINIUM
NFPA 285

TITLE

DETAIL A-A' // FAÇADE BASE

DRAWN BY

Joseba Salbide

APPROVED BY

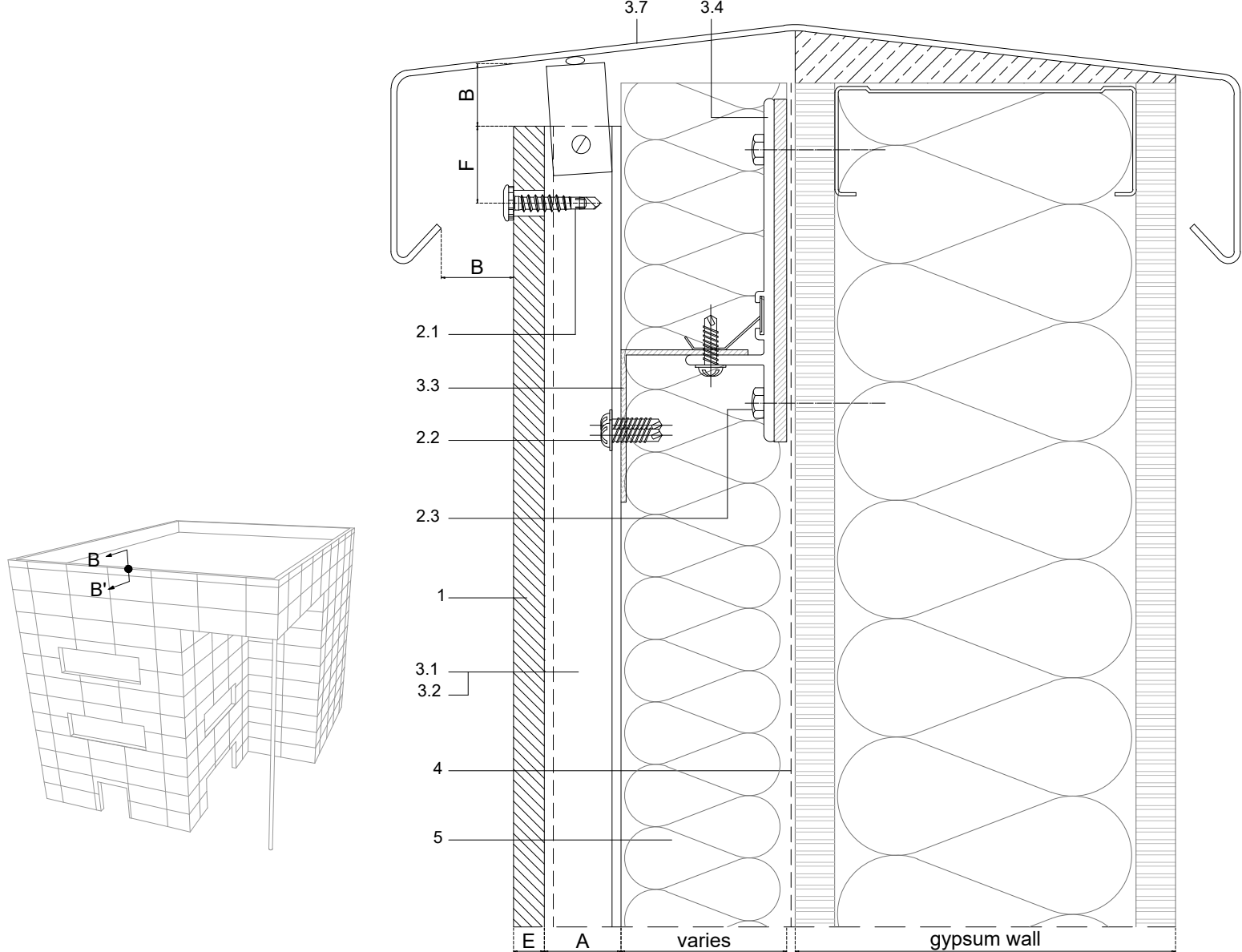
Maialen Irastorza

DATE

01/2022

PAGE

2 / 21



1	NATURCLAD
2	Screws
2.1	Panel fastener metal
2.2	Channel fastener - by others
2.3	Wall fixing screw - by others
3	Profiles
3.1	Aluminum J profile
3.2	Aluminum HAT profile
3.3	Aluminum L profile
3.4	Alum. wall bracket + Insulator pad
3.5	Jamb profile - by others
3.6	Sill profile - by others
3.7	Coronation profile - by others
4	Water resistant barrier - by others
5	Thermal insulation - by others
6	Vent. screen - by others

A	Required min. air chamber $\geq 3/4"$ (20mm)
B	Circulation of air $\geq 3/4"$ (20mm)
D	Expansion joint $1/4" - 3/8"$ (6-10mm)
E	Panel thickness $\geq 5/16"$ (8mm)
F	Distance from the screws to the panel edges $3/4" - 1 1/2"$ (20-40mm)

Measurements in inches are approximated. Real measurements in mm.

Scale 1:2

Measures: inch

PARKLEX PRODEMA
www.parklexprodema.com

PRODUCT
NATURCLAD

PLAN#
NC1-01-C-B

SYSTEM
EXPOSED SCREW FIXING ON ALUMINIUM
NFPA 285

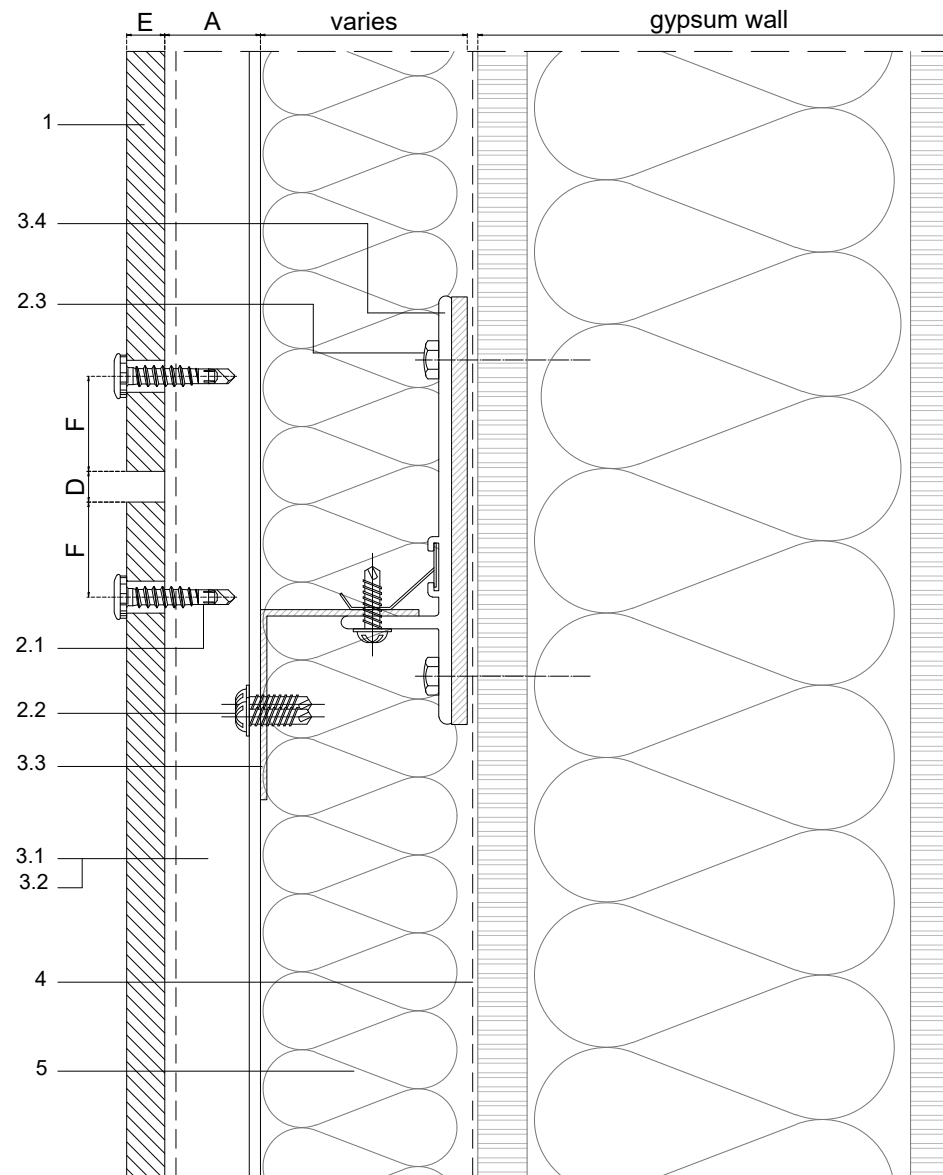
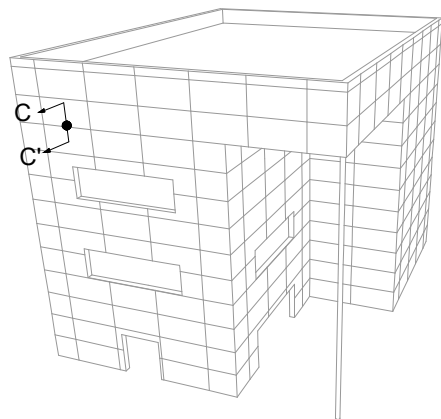
TITLE
DETAIL B-B' // PARAPET CAP

DRAWN BY
Joseba Salbide

APPROVED BY
Maialen Irastorza

DATE
01/2022

PAGE
3 / 21



1	NATURCLAD
2	Screws
2.1	Panel fastener metal
2.2	Channel fastener - by others
2.3	Wall fixing screw - by others
3	Profiles
3.1	Aluminum J profile
3.2	Aluminum HAT profile
3.3	Aluminum L profile
3.4	Alum. wall bracket + Insulator pad
3.5	Jamb profile - by others
3.6	Sill profile - by others
3.7	Coronation profile - by others
4	Water resistant barrier - by others
5	Thermal insulation - by others
6	Vent. screen - by others

A	Required min. air chamber $\geq 3/4"$ (20mm)
B	Circulation of air $\geq 3/4"$ (20mm)
D	Expansion joint $1/4" - 3/8"$ (6-10mm)
E	Panel thickness $\geq 5/16"$ (8mm)
F	Distance from the screws to the panel edges $3/4" - 1 1/2"$ (20-40mm)

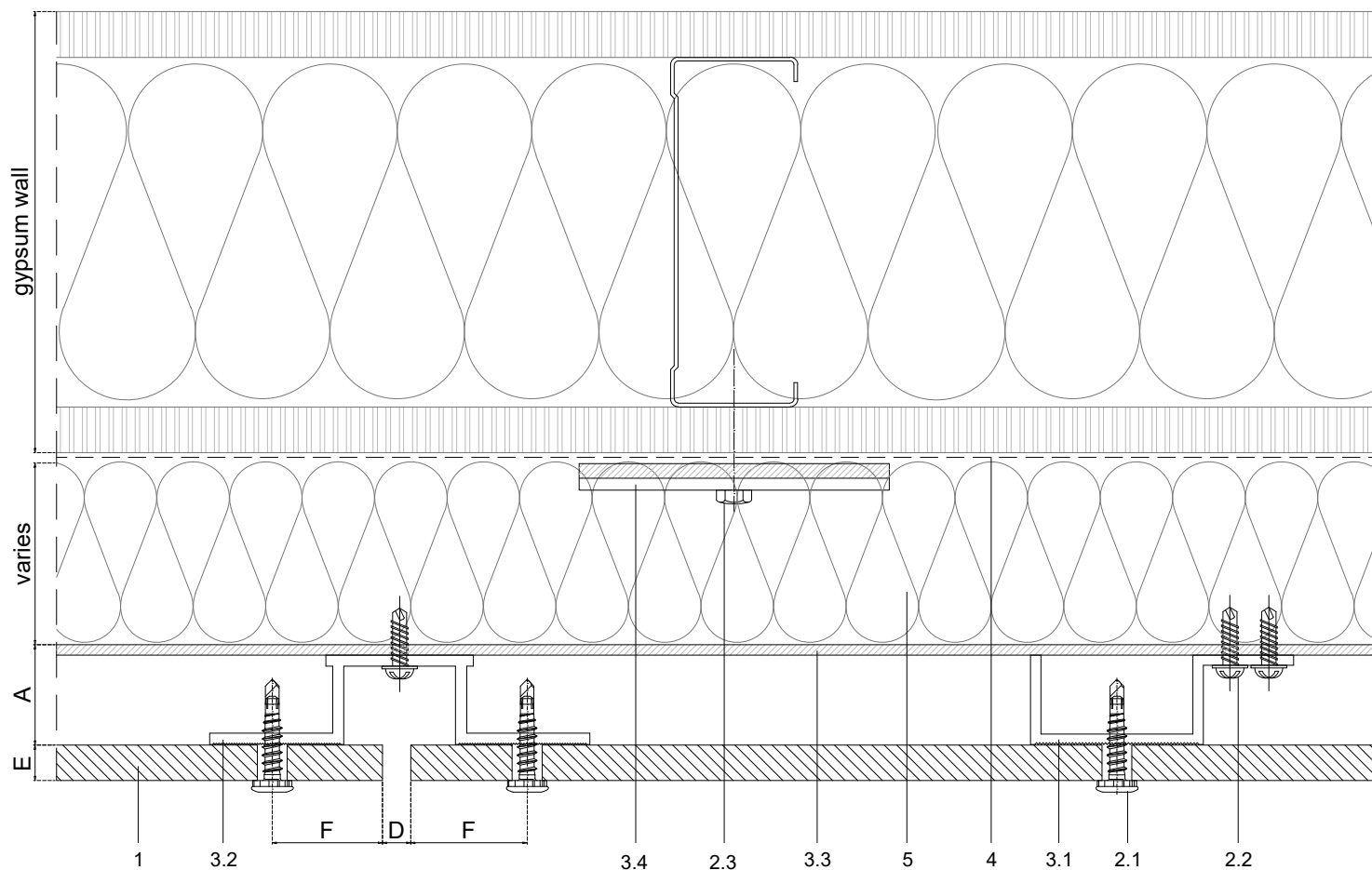
Measurements in inches are approximated. Real measurements in mm.

Scale 1:2

Measures: inch

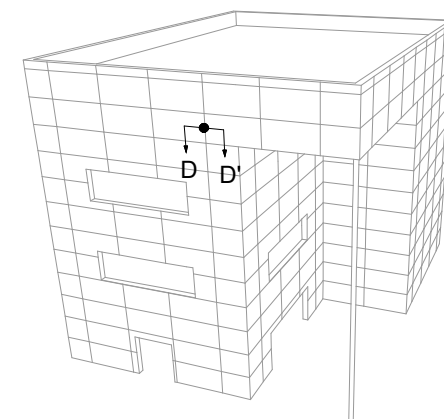
PARKLEX PRODEMA
www.parklexprodema.com

PRODUCT	NATURCLAD	SYSTEM	EXPOSED SCREW FIXING ON ALUMINIUM NFPA 285	DRAWN BY	Joseba Salbide	DATE	01/2022
PLAN#	NC1-01-C-C	TITLE	DETAIL C-C' // HORIZONTAL JOINT	APPROVED BY	Maialen Irastorza	PAGE	4 / 21



1	NATURCLAD
2	Screws
2.1	Panel fastener metal
2.2	Channel fastener - by others
2.3	Wall fixing screw - by others
3	Profiles
3.1	Aluminum J profile
3.2	Aluminum HAT profile
3.3	Aluminum L profile
3.4	Alum. wall bracket + Insulator pad
3.5	Jamb profile - by others
3.6	Sill profile - by others
3.7	Coronation profile - by others
4	Water resistant barrier - by others
5	Thermal insulation - by others
6	Vent. screen - by others

A	Required min. air chamber $\geq 3/4"$ (20mm)
B	Circulation of air $\geq 3/4"$ (20mm)
D	Expansion joint $1/4" - 3/8"$ (6-10mm)
E	Panel thickness $\geq 5/16"$ (8mm)
F	Distance from the screws to the panel edges $3/4" - 1 1/2"$ (20-40mm)



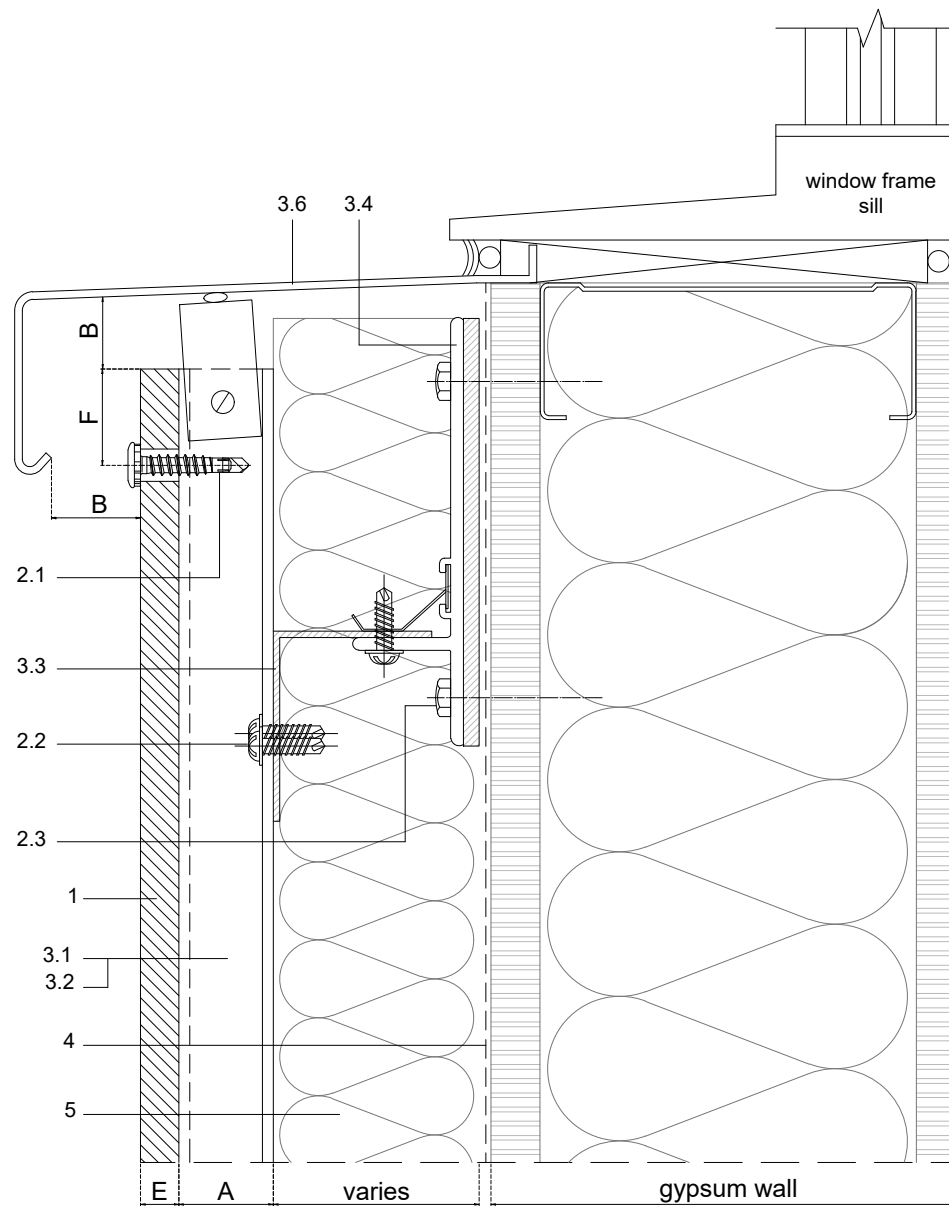
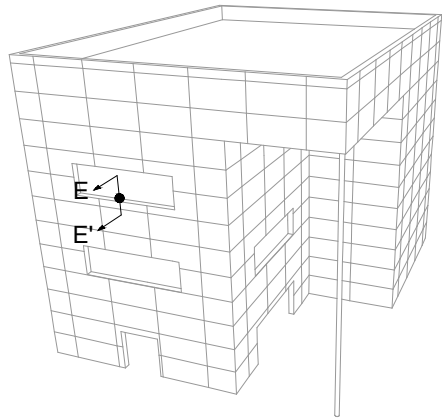
Measurements in inches are approximated. Real measurements in mm.

Scale 1:2

Measures: inch

PARKLEX PRODEMA
www.parklexprodema.com

PRODUCT	SYSTEM	DRAWN BY	DATE
NATURCLAD	EXPOSED SCREW FIXING ON ALUMINIUM NFPA 285	Joseba Salbide	01/2022
PLAN#	TITLE	APPROVED BY	PAGE
NC1-01-C-D	DETAIL D-D' // VERTICAL JOINT	Maialen Irastorza	5 / 21



1	NATURCLAD
2	Screws
2.1	Panel fastener metal
2.2	Channel fastener - by others
2.3	Wall fixing screw - by others
3	Profiles
3.1	Aluminum J profile
3.2	Aluminum HAT profile
3.3	Aluminum L profile
3.4	Alum. wall bracket + Insulator pad
3.5	Jamb profile - by others
3.6	Sill profile - by others
3.7	Coronation profile - by others
4	Water resistant barrier - by others
5	Thermal insulation - by others
6	Vent. screen - by others

A	Required min. air chamber $\geq 3/4"$ (20mm)
B	Circulation of air $\geq 3/4"$ (20mm)
D	Expansion joint $1/4" - 3/8"$ (6-10mm)
E	Panel thickness $\geq 5/16"$ (8mm)
F	Distance from the screws to the panel edges $3/4" - 1 1/2"$ (20-40mm)

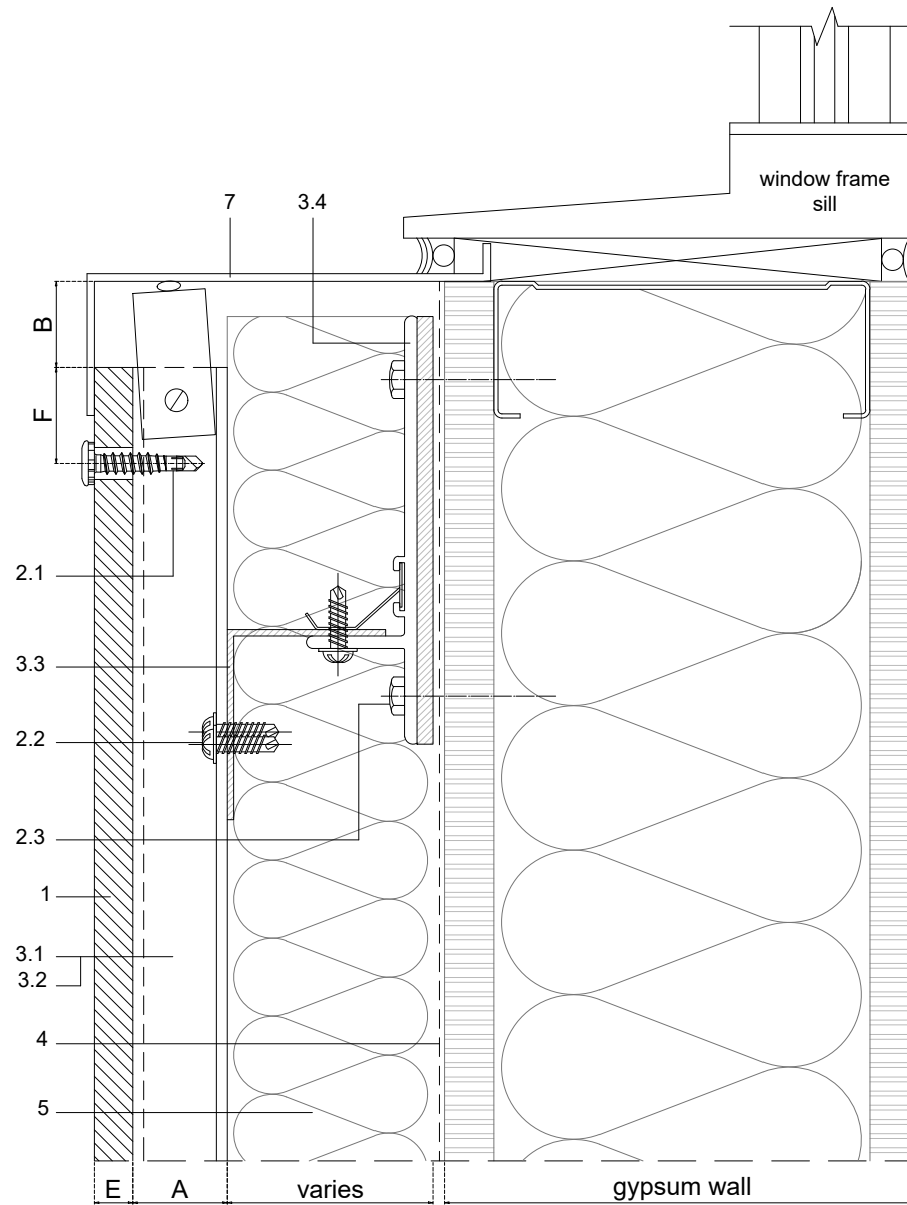
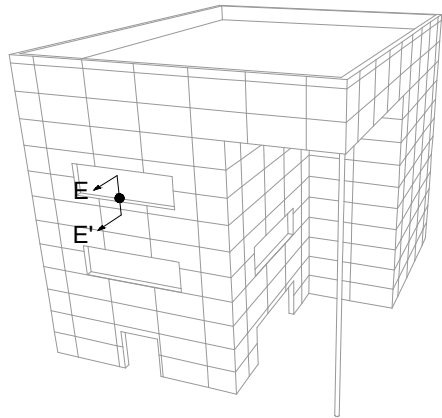
Measurements in inches are approximated. Real measurements in mm.

Scale 1:2

Measures: inch

PARKLEX PRODEMA
www.parklexprodema.com

PRODUCT	NATURCLAD	SYSTEM	EXPOSED SCREW FIXING ON ALUMINIUM NFPA 285	DRAWN BY	Joseba Salbide	DATE	01/2022
PLAN#	NC1-01-C-E	TITLE	DETAIL E-E' // WINDOW SILL	APPROVED BY	Maialen Irastorza	PAGE	6 / 21



1	NATURCLAD
2	Screws
2.1	Panel fastener metal
2.2	Channel fastener - by others
2.3	Wall fixing screw - by others
3	Profiles
3.1	Aluminum J profile
3.2	Aluminum HAT profile
3.3	Aluminum L profile
3.4	Alum. wall bracket + Insulator pad
3.5	Jamb profile - by others
3.6	Sill profile - by others
3.7	Coronation profile - by others
4	Water resistant barrier - by others
5	Thermal insulation - by others
6	Vent. screen - by others
7	16 GA solid head - by others

A	Required min. air chamber $\geq 3/4"$ (20mm)
B	Circulation of air $\geq 3/4"$ (20mm)
D	Expansion joint $1/4" - 3/8"$ (6-10mm)
E	Panel thickness $\geq 5/16"$ (8mm)
F	Distance from the screws to the panel edges $3/4" - 1 1/2"$ (20-40mm)

Measurements in inches are approximated. Real measurements in mm.

Scale 1:2

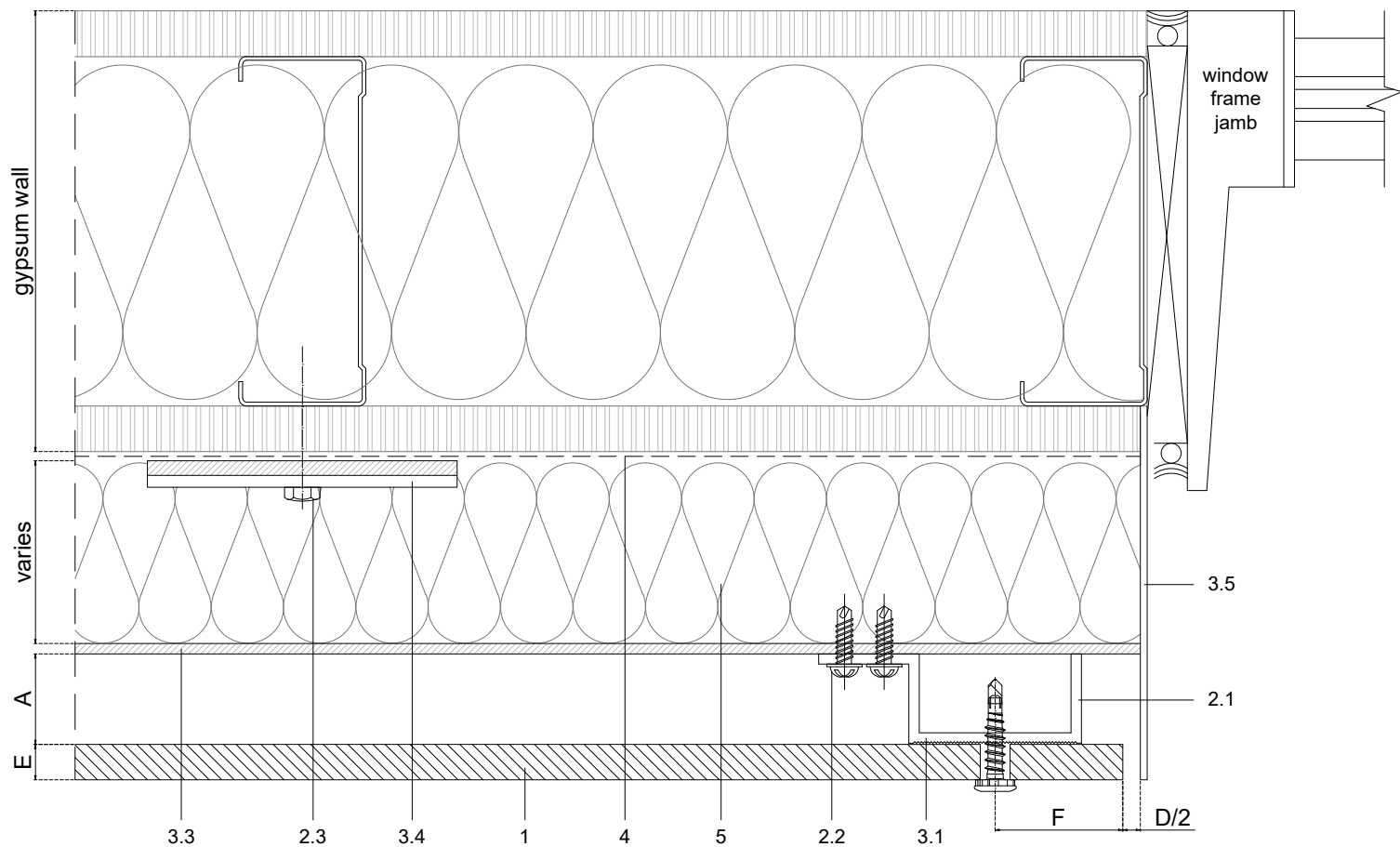
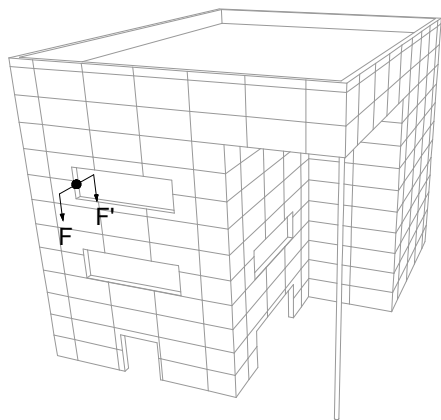
Measures: inch

PARKLEX PRODEMA
www.parklexprodema.com

PRODUCT	NATURCLAD	SYSTEM	EXPOSED SCREW FIXING ON ALUMINIUM NFPA 285	DRAWN BY	Joseba Salbide	DATE	01/2022
PLAN#	NC1-01-C-E2	TITLE	DETAIL E-E' // WINDOL SILL 2	APPROVED BY	Maialen Irastorza	PAGE	7 / 21

1	NATURCLAD
2	Screws
2.1	Panel fastener metal
2.2	Channel fastener - by others
2.3	Wall fixing screw - by others
3	Profiles
3.1	Aluminum J profile
3.2	Aluminum HAT profile
3.3	Aluminum L profile
3.4	Alum. wall bracket + Insulator pad
3.5	Jamb profile - by others
3.6	Sill profile - by others
3.7	Coronation profile - by others
4	Water resistant barrier - by others
5	Thermal insulation - by others
6	Vent. screen - by others

A	Required min. air chamber $\geq 3/4"$ (20mm)
B	Circulation of air $\geq 3/4"$ (20mm)
D	Expansion joint $1/4" - 3/8"$ (6-10mm)
E	Panel thickness $\geq 5/16"$ (8mm)
F	Distance from the screws to the panel edges $3/4" - 1 1/2"$ (20-40mm)



Measurements in inches are approximated. Real measurements in mm.

Scale 1:2

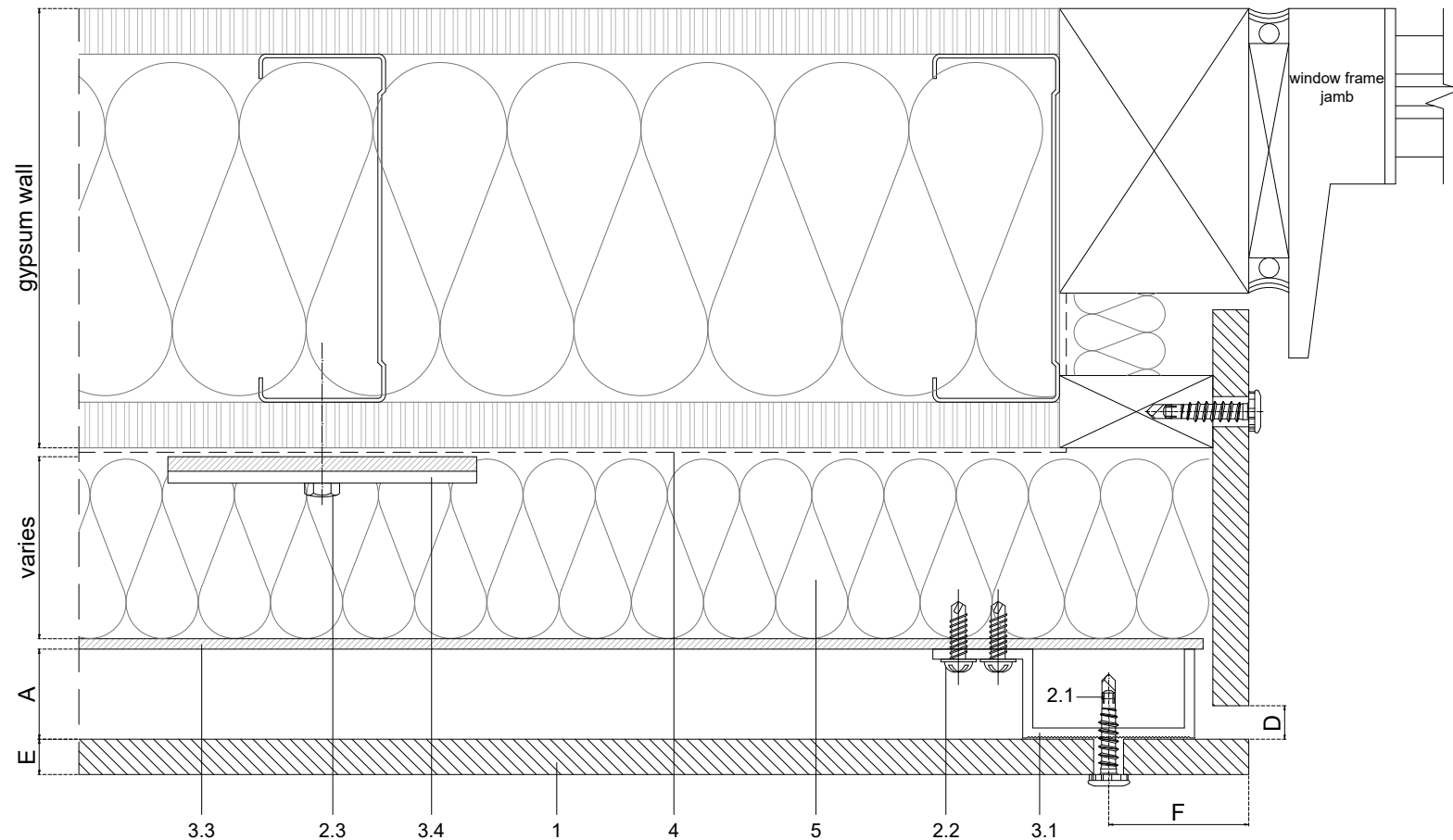
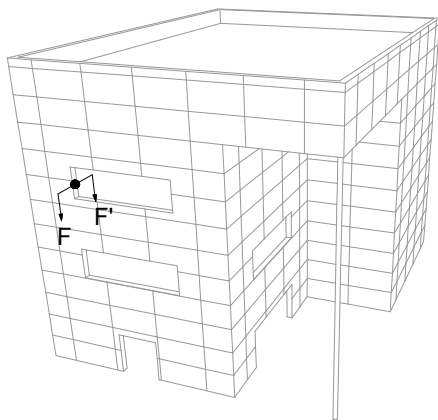
Measures: inch

PARKLEX PRODEMA
www.parklexprodema.com

PRODUCT	NATURCLAD	SYSTEM	EXPOSED SCREW FIXING ON ALUMINIUM NFPA 285	DRAWN BY	Joseba Salbide	DATE	01/2022
PLAN#	NC1-01-C-F	TITLE	DETAIL F-F' // WINDOW JAMB	APPROVED BY	Maialen Irastorza	PAGE	8 / 21

1	NATURCLAD
2	Screws
2.1	Panel fastener metal
2.2	Channel fastener - by others
2.3	Wall fixing screw - by others
3	Profiles
3.1	Aluminum J profile
3.2	Aluminum HAT profile
3.3	Aluminum L profile
3.4	Alum. wall bracket + Insulator pad
3.5	Jamb profile - by others
3.6	Sill profile - by others
3.7	Coronation profile - by others
4	Water resistant barrier - by others
5	Thermal insulation - by others
6	Vent. screen - by others

A	Required min. air chamber $\geq 3/4"$ (20mm)
B	Circulation of air $\geq 3/4"$ (20mm)
D	Expansion joint $1/4" - 3/8"$ (6-10mm)
E	Panel thickness $\geq 5/16"$ (8mm)
F	Distance from the screws to the panel edges $3/4" - 1 1/2"$ (20-40mm)



Measurements in inches are approximated. Real measurements in mm.

Scale 1:2

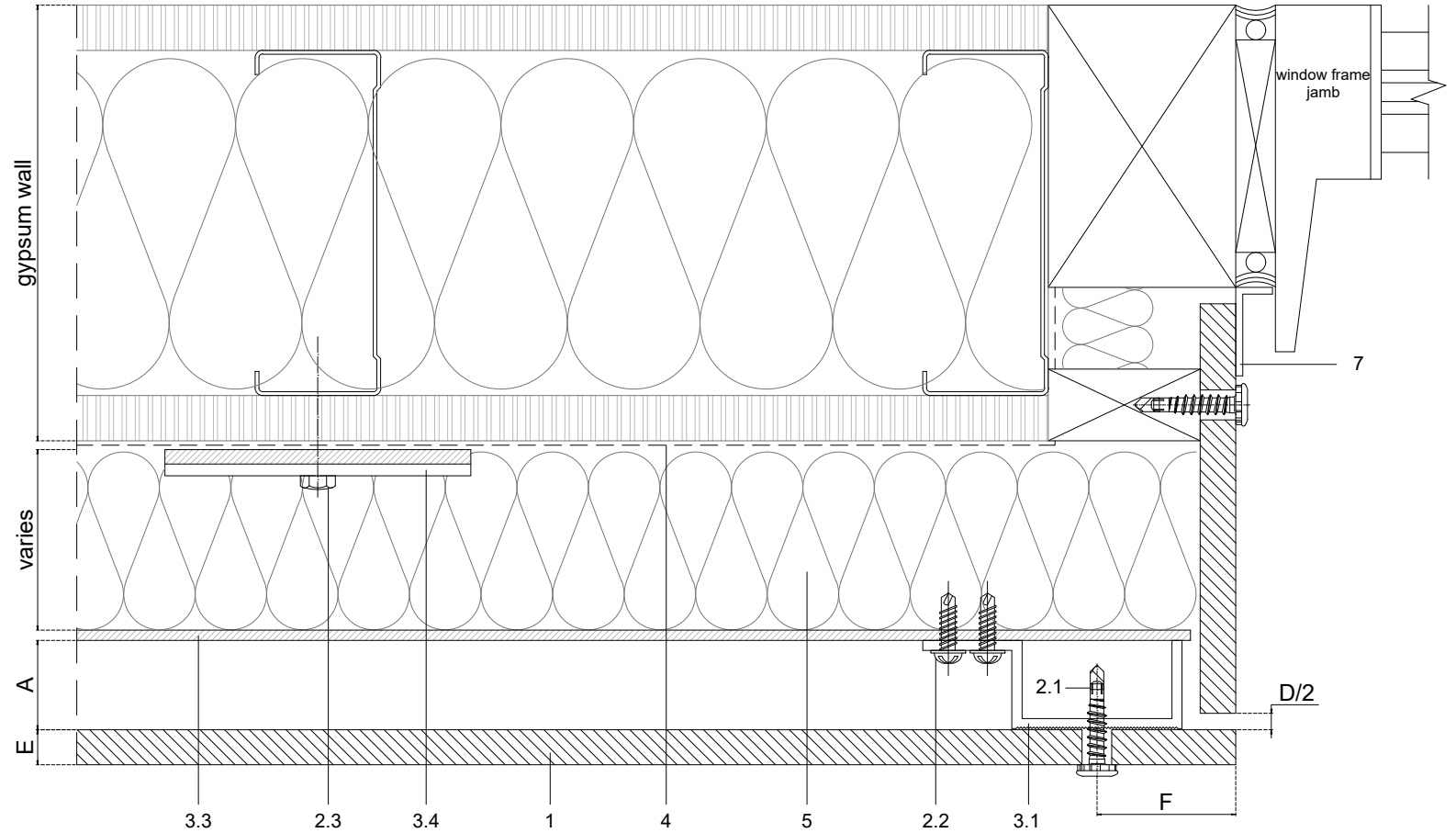
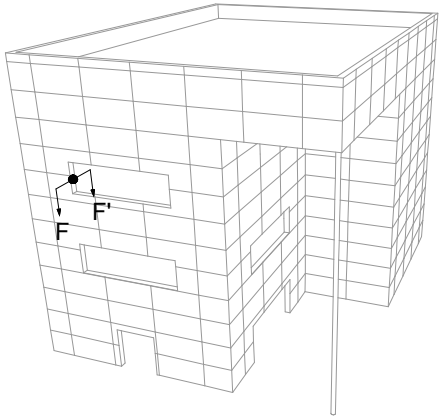
Measures: inch

PARKLEX PRODEMA
www.parklexprodema.com

PRODUCT	NATURCLAD	SYSTEM	EXPOSED SCREW FIXING ON ALUMINIUM NFPA 285	DRAWN BY	Joseba Salbide	DATE	01/2022
PLAN#	NC1-01-CF2	TITLE	DETAIL F-F' // WINDOW JAMB 2	APPROVED BY	Maialen Irastorza	PAGE	9 / 21

1	NATURCLAD
2	Screws
2.1	Panel fastener metal
2.2	Channel fastener - by others
2.3	Wall fixing screw - by others
3	Profiles
3.1	Aluminum J profile
3.2	Aluminum HAT profile
3.3	Aluminum L profile
3.4	Alum. wall bracket + Insulator pad
3.5	Jamb profile - by others
3.6	Sill profile - by others
3.7	Coronation profile - by others
4	Water resistant barrier - by others
5	Thermal insulation - by others
6	Vent. screen - by others
7	16 GA solid head - by others

A	Required min. air chamber $\geq 3/4"$ (20mm)
B	Circulation of air $\geq 3/4"$ (20mm)
D	Expansion joint $1/4" - 3/8"$ (6-10mm)
E	Panel thickness $\geq 5/16"$ (8mm)
F	Distance from the screws to the panel edges $3/4" - 1 1/2"$ (20-40mm)



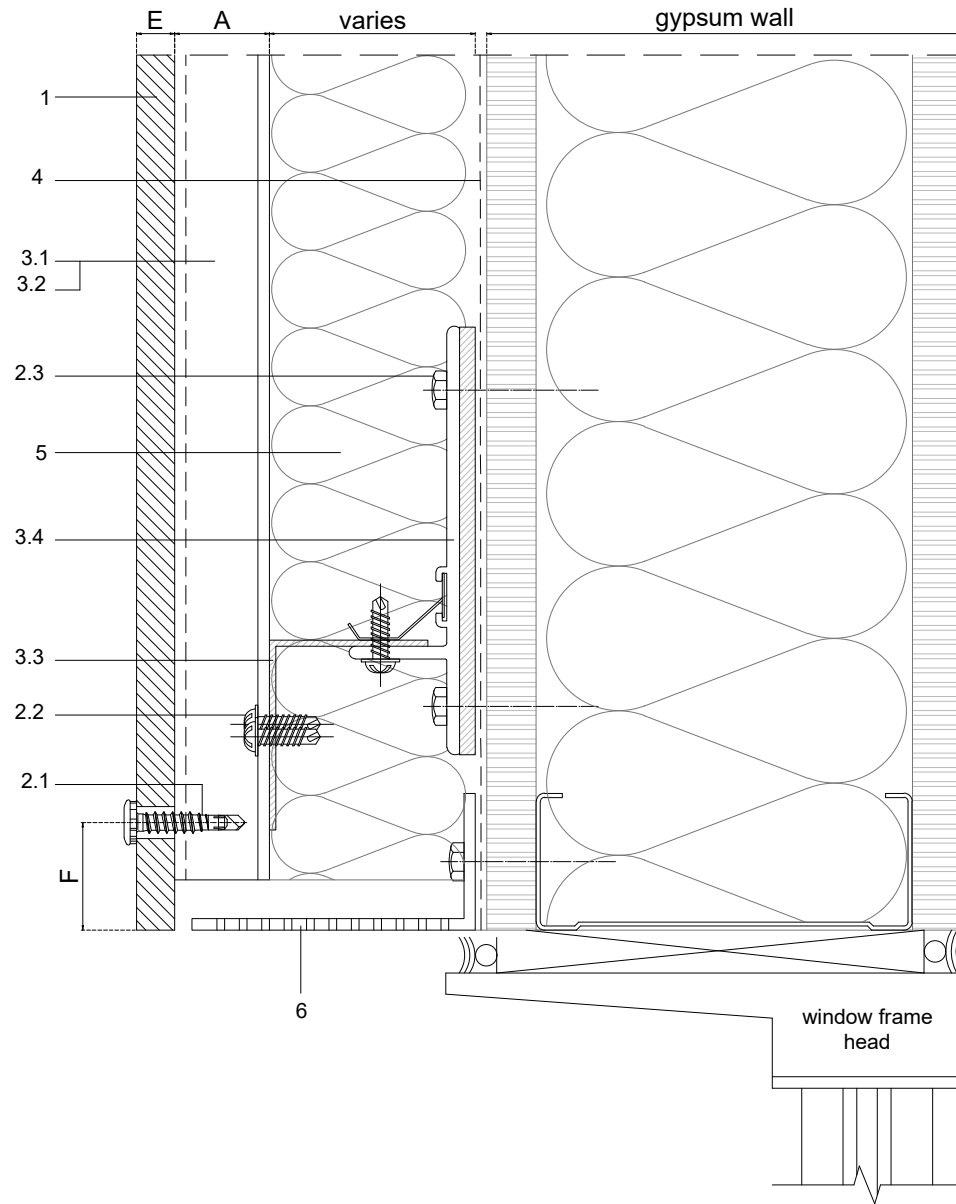
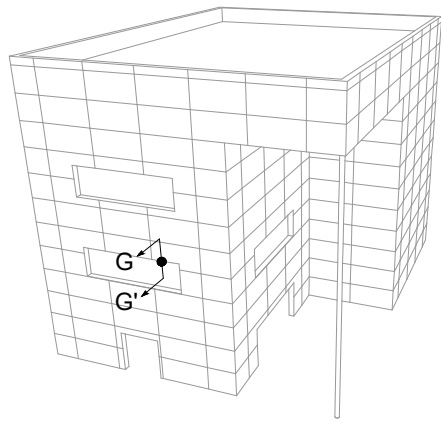
Measurements in inches are approximated. Real measurements in mm.

Scale 1:2

Measures: inch

PARKLEX PRODEMA
www.parklexprodema.com

PRODUCT	SYSTEM	DRAWN BY	DATE
NATURCLAD	EXPOSED SCREW FIXING ON ALUMINIUM NFPA 285	Joseba Salbide	01/2022
PLAN#	TITLE	APPROVED BY	PAGE
NC1-01-C-F3	DETAIL F-F' // WINDOW JAMB 3	Maialen Irastorza	10 / 21



1	NATURCLAD
2	Screws
2.1	Panel fastener metal
2.2	Channel fastener - by others
2.3	Wall fixing screw - by others
3	Profiles
3.1	Aluminum J profile
3.2	Aluminum HAT profile
3.3	Aluminum L profile
3.4	Alum. wall bracket + Insulator pad
3.5	Jamb profile - by others
3.6	Sill profile - by others
3.7	Coronation profile - by others
4	Water resistant barrier - by others
5	Thermal insulation - by others
6	Vent. screen - by others

A	Required min. air chamber $\geq 3/4"$ (20mm)
B	Circulation of air $\geq 3/4"$ (20mm)
D	Expansion joint $1/4" - 3/8"$ (6-10mm)
E	Panel thickness $\geq 5/16"$ (8mm)
F	Distance from the screws to the panel edges $3/4" - 1 1/2"$ (20-40mm)

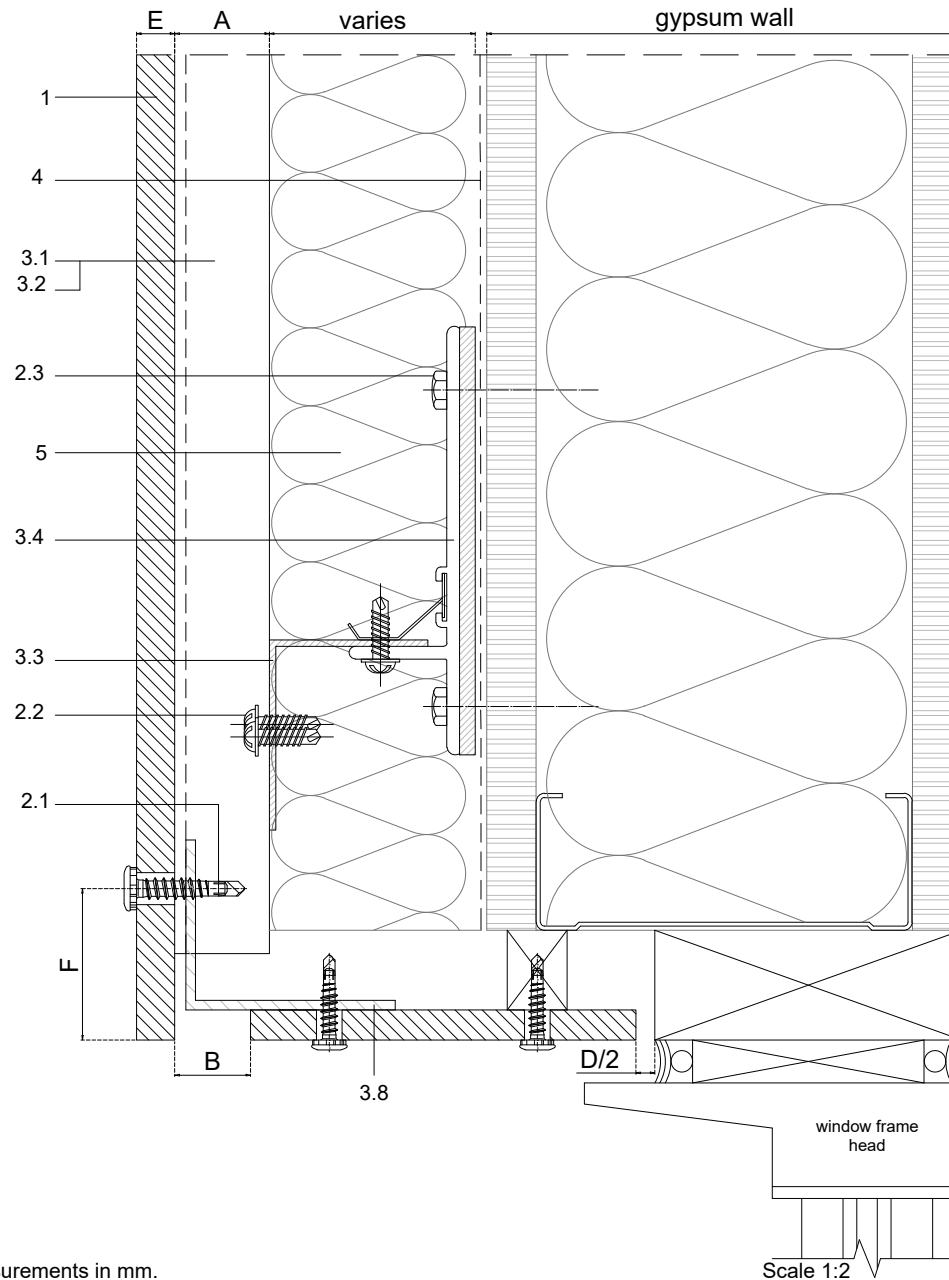
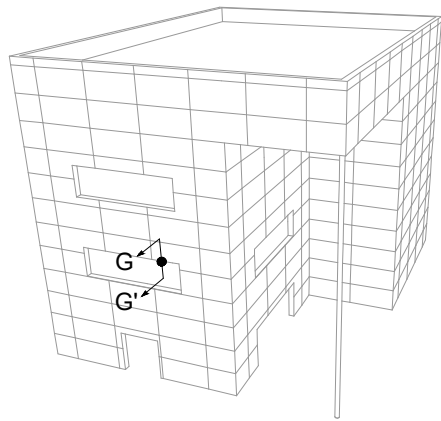
Measurements in inches are approximated. Real measurements in mm.

Scale 1:2

Measures: inch

PARKLEX PRODEMA
www.parklexprodema.com

PRODUCT	NATURCLAD	SYSTEM	EXPOSED SCREW FIXING ON ALUMINIUM NFPA 285	DRAWN BY	Joseba Salbide	DATE	01/2022
PLAN#	NC1-01-C-G	TITLE	DETAIL G-G' // WINDOW HEAD	APPROVED BY	Maialen Irastorza	PAGE	11 / 21



1	NATURCLAD
2	Screws
2.1	Panel fastener metal
2.2	Channel fastener - by others
2.3	Wall fixing screw - by others
2.4	Union screw - by others
3	Profiles
3.1	Aluminum J profile
3.2	Aluminum HAT profile
3.3	Aluminum L profile
3.4	Alum. wall bracket + Insulator pad
3.5	Jamb profile - by others
3.6	Sill profile - by others
3.7	Coronation profile - by others
3.8	Union profile - by others
4	Water resistant barrier - by others
5	Thermal insulation - by others
6	Vent. screen - by others

A	Required min. air chamber $\geq 3/4"$ (20mm)
B	Circulation of air $\geq 3/4"$ (20mm)
D	Expansion joint $1/4" - 3/8"$ (6-10mm)
E	Panel thickness $\geq 5/16"$ (8mm)
F	Distance from the screws to the panel edges $3/4" - 1 1/2"$ (20-40mm)

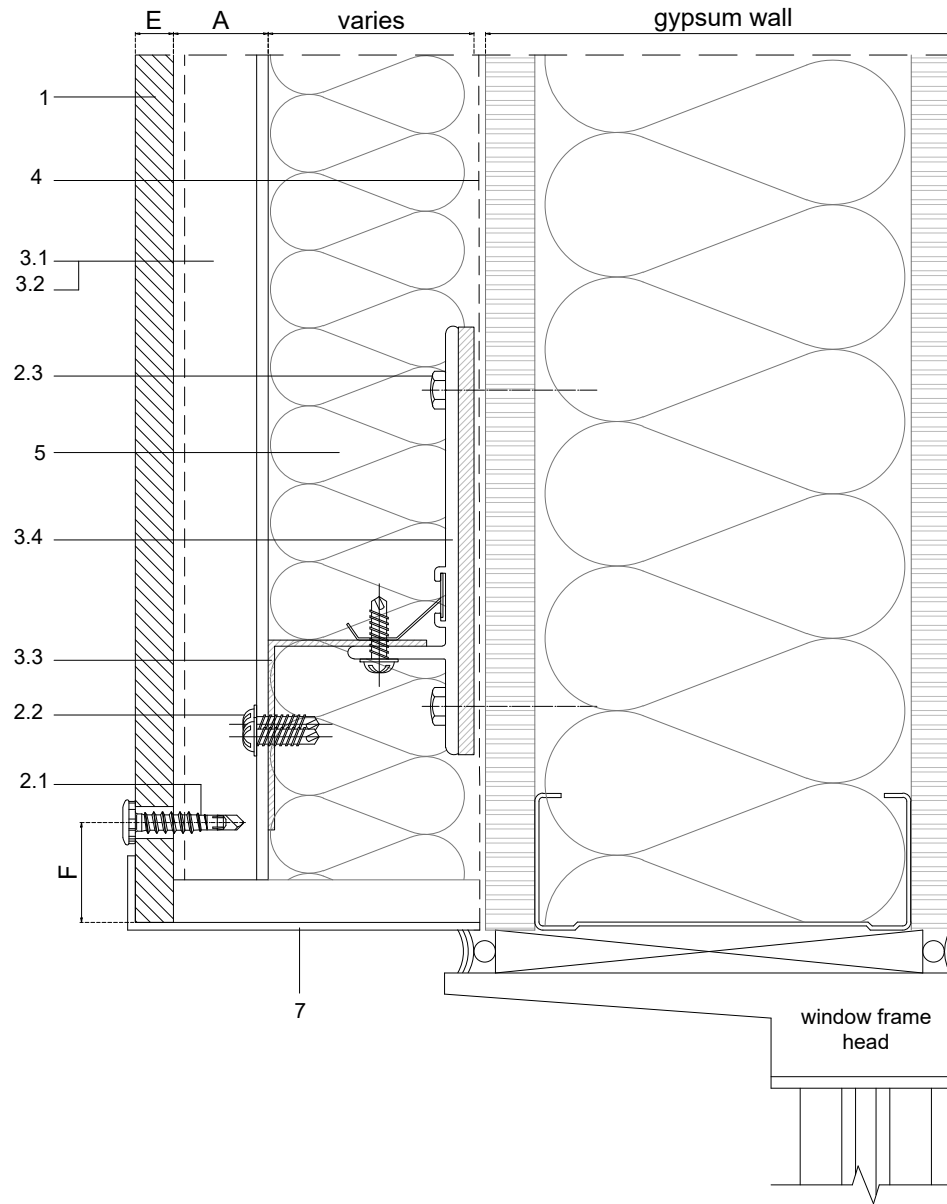
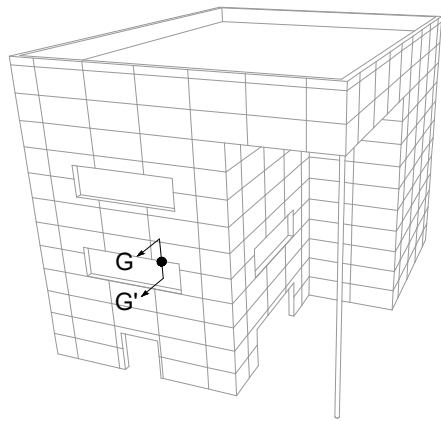
Measurements in inches are approximated. Real measurements in mm.

Scale 1:2

Measures: inch

PARKLEX PRODEMA
www.parklexprodema.com

PRODUCT	NATURCLAD	SYSTEM	EXPOSED SCREW FIXING ON ALUMINIUM NFPA 285	DRAWN BY	Joseba Salbide	DATE	01/2022
PLAN#	NC1-01-C-G2	TITLE	DETAIL G-G' // WINDOW HEAD 2	APPROVED BY	Maialen Irastorza	PAGE	12 / 21



1	NATURCLAD
2	Screws
2.1	Panel fastener metal
2.2	Channel fastener - by others
2.3	Wall fixing screw - by others
3	Profiles
3.1	Aluminum J profile
3.2	Aluminum HAT profile
3.3	Aluminum L profile
3.4	Alum. wall bracket + Insulator pad
3.5	Jamb profile - by others
3.6	Sill profile - by others
3.7	Coronation profile - by others
4	Water resistant barrier - by others
5	Thermal insulation - by others
6	Vent. screen - by others
7	16 GA solid head - by others
A	Required min. air chamber $\geq 3/4"$ (20mm)
B	Circulation of air $\geq 3/4"$ (20mm)
D	Expansion joint $1/4" - 3/8"$ (6-10mm)
E	Panel thickness $\geq 5/16"$ (8mm)
F	Distance from the screws to the panel edges $3/4" - 1 1/2"$ (20-40mm)

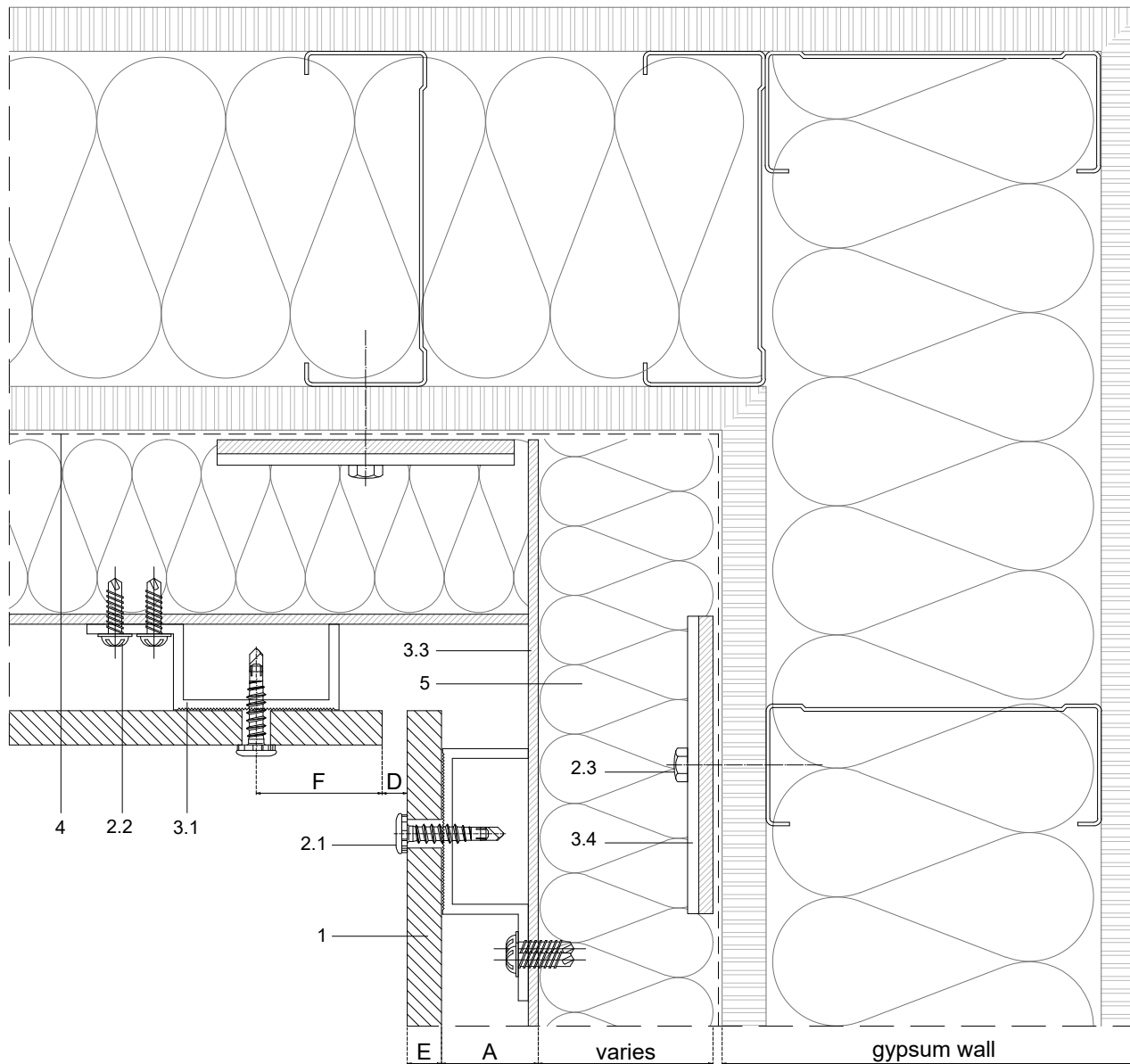
Measurements in inches are approximated. Real measurements in mm.

Scale 1:2

Measures: inch

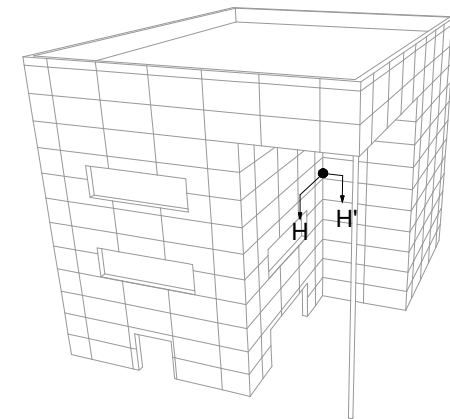
PARKLEX PRODEMA
www.parklexprodema.com

PRODUCT	NATURCLAD	SYSTEM	EXPOSED SCREW FIXING ON ALUMINIUM NFPA 285	DRAWN BY	Joseba Salbide	DATE	01/2022
PLAN#	NC1-01-C-G3	TITLE	DETAIL G-G' // WINDOW HEAD 3	APPROVED BY	Maialen Irastorza	PAGE	13 / 21



1	NATURCLAD
2	Screws
2.1	Panel fastener metal
2.2	Channel fastener - by others
2.3	Wall fixing screw - by others
3	Profiles
3.1	Aluminum J profile
3.2	Aluminum HAT profile
3.3	Aluminum L profile
3.4	Alum. wall bracket + Insulator pad
3.5	Jamb profile - by others
3.6	Sill profile - by others
3.7	Coronation profile - by others
4	Water resistant barrier - by others
5	Thermal insulation - by others
6	Vent. screen - by others

A	Required min. air chamber $\geq 3/4"$ (20mm)
B	Circulation of air $\geq 3/4"$ (20mm)
D	Expansion joint $1/4" - 3/8"$ (6-10mm)
E	Panel thickness $\geq 5/16"$ (8mm)
F	Distance from the screws to the panel edges $3/4" - 1 1/2"$ (20-40mm)



Measurements in inches are approximated. Real measurements in mm.

Scale 1:2

Measures: inch

PARKLEX PRODEMA
www.parklexprodema.com

PRODUCT
NATURCLAD

PLAN#
NC1-01-C-H

SYSTEM

EXPOSED SCREW FIXING ON ALUMINIUM
NFPA 285

TITLE

DETAIL H-H' // INSIDE CORNER (OPEN JOINT)

DRAWN BY

Joseba Salbide

APPROVED BY

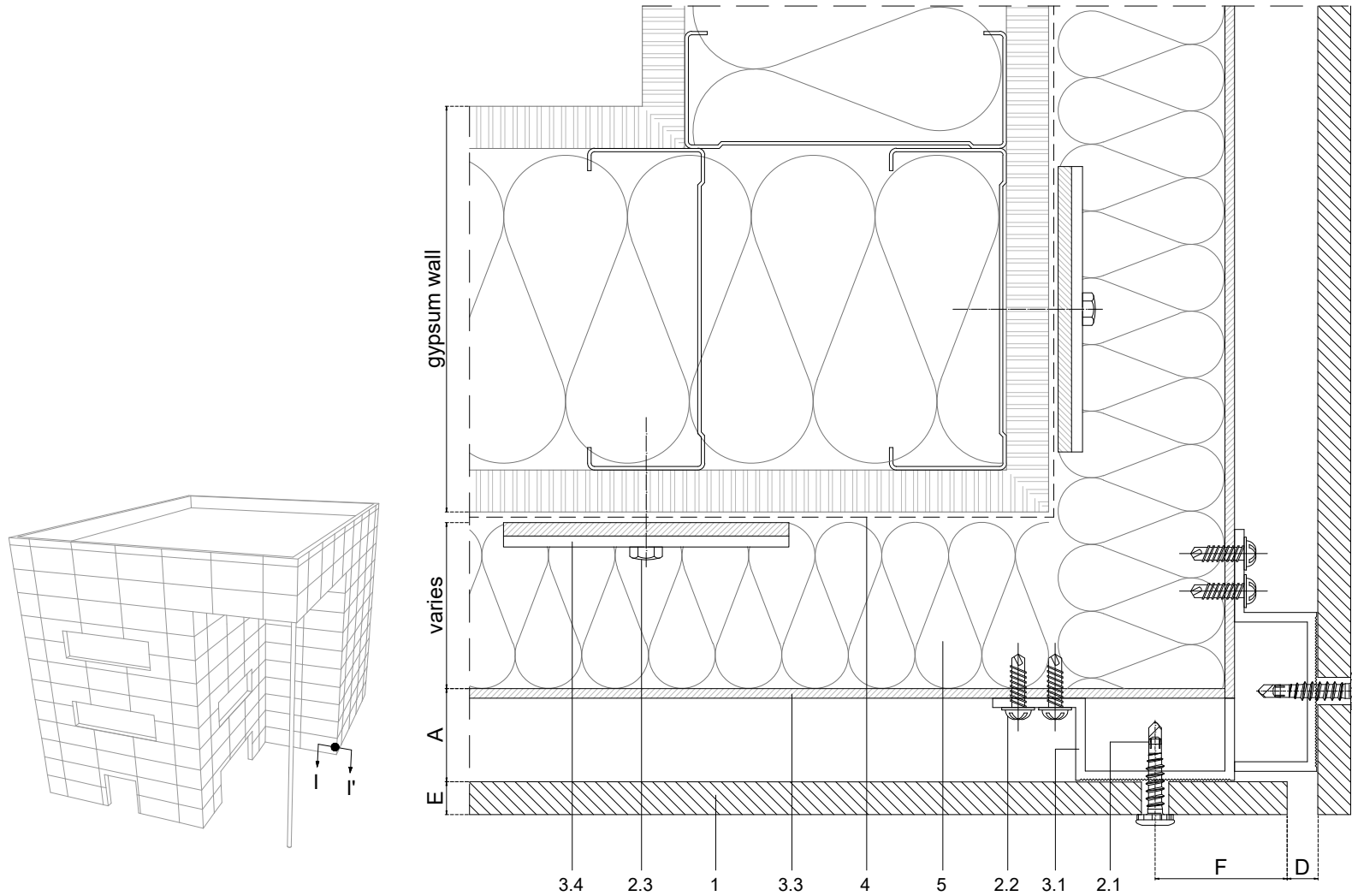
Maialen Irastorza

DATE

01/2022

PAGE

14 / 21



1	NATURCLAD
2	Screws
2.1	Panel fastener metal
2.2	Channel fastener - by others
2.3	Wall fixing screw - by others
3	Profiles
3.1	Aluminum J profile
3.2	Aluminum HAT profile
3.3	Aluminum L profile
3.4	Alum. wall bracket + Insulator pad
3.5	Jamb profile - by others
3.6	Sill profile - by others
3.7	Coronation profile - by others
4	Water resistant barrier - by others
5	Thermal insulation - by others
6	Vent. screen - by others

A	Required min. air chamber $\geq 3/4"$ (20mm)
B	Circulation of air $\geq 3/4"$ (20mm)
D	Expansion joint $1/4" - 3/8"$ (6-10mm)
E	Panel thickness $\geq 5/16"$ (8mm)
F	Distance from the screws to the panel edges $3/4" - 1 1/2"$ (20-40mm)

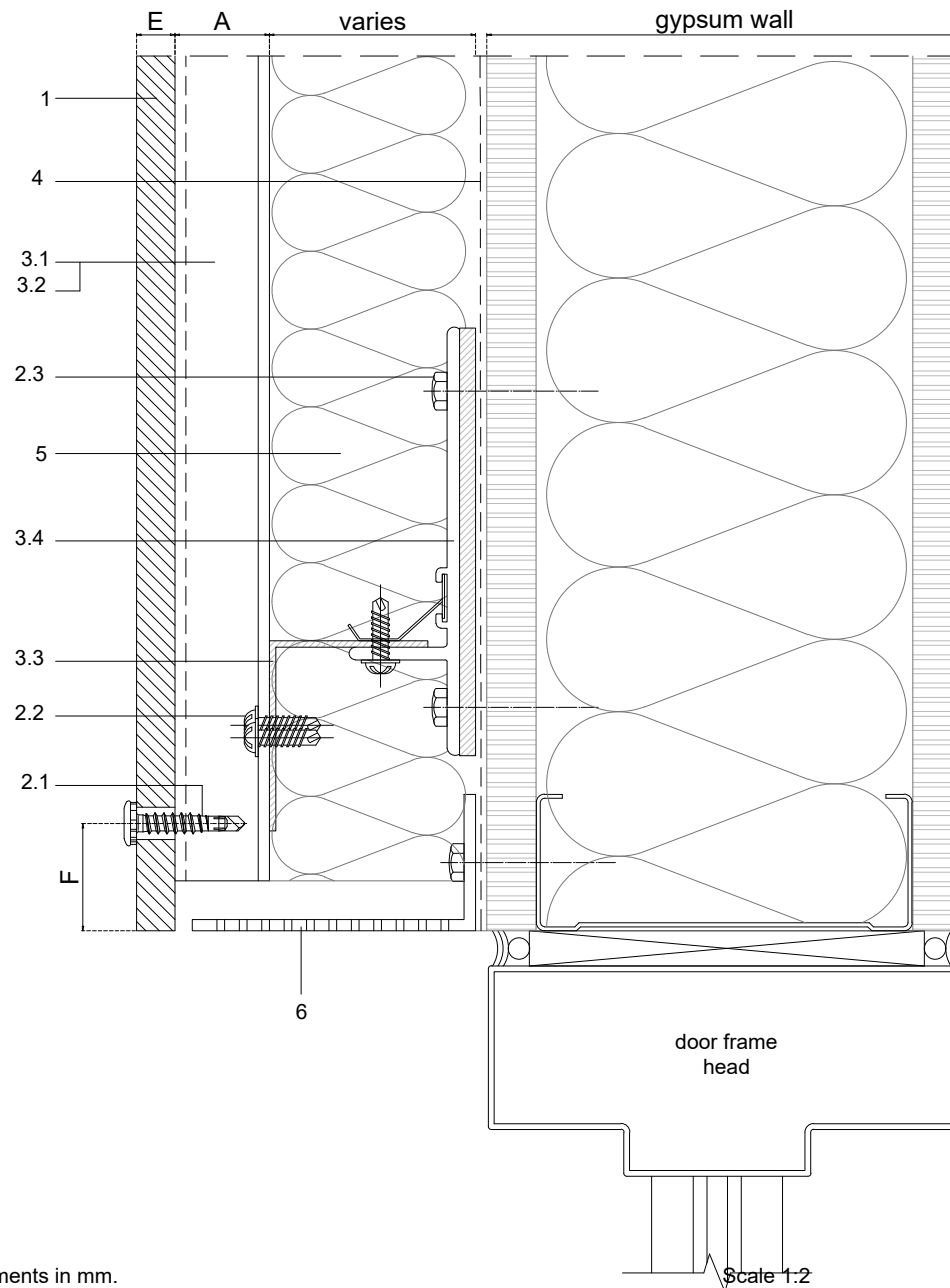
Measurements in inches are approximated. Real measurements in mm.

Scale 1:2

Measures: inch

PARKLEX PRODEMA
www.parklexprodema.com

PRODUCT	NATURCLAD	SYSTEM	EXPOSED SCREW FIXING ON ALUMINIUM NFPA 285	DRAWN BY	Joseba Salbide	DATE	01/2022
PLAN#	NC1-01-C-I	TITLE	DETAIL I-I' // OUTSIDE CORNER (OPEN JOINT)	APPROVED BY	Maialen Irastorza	PAGE	15 / 21

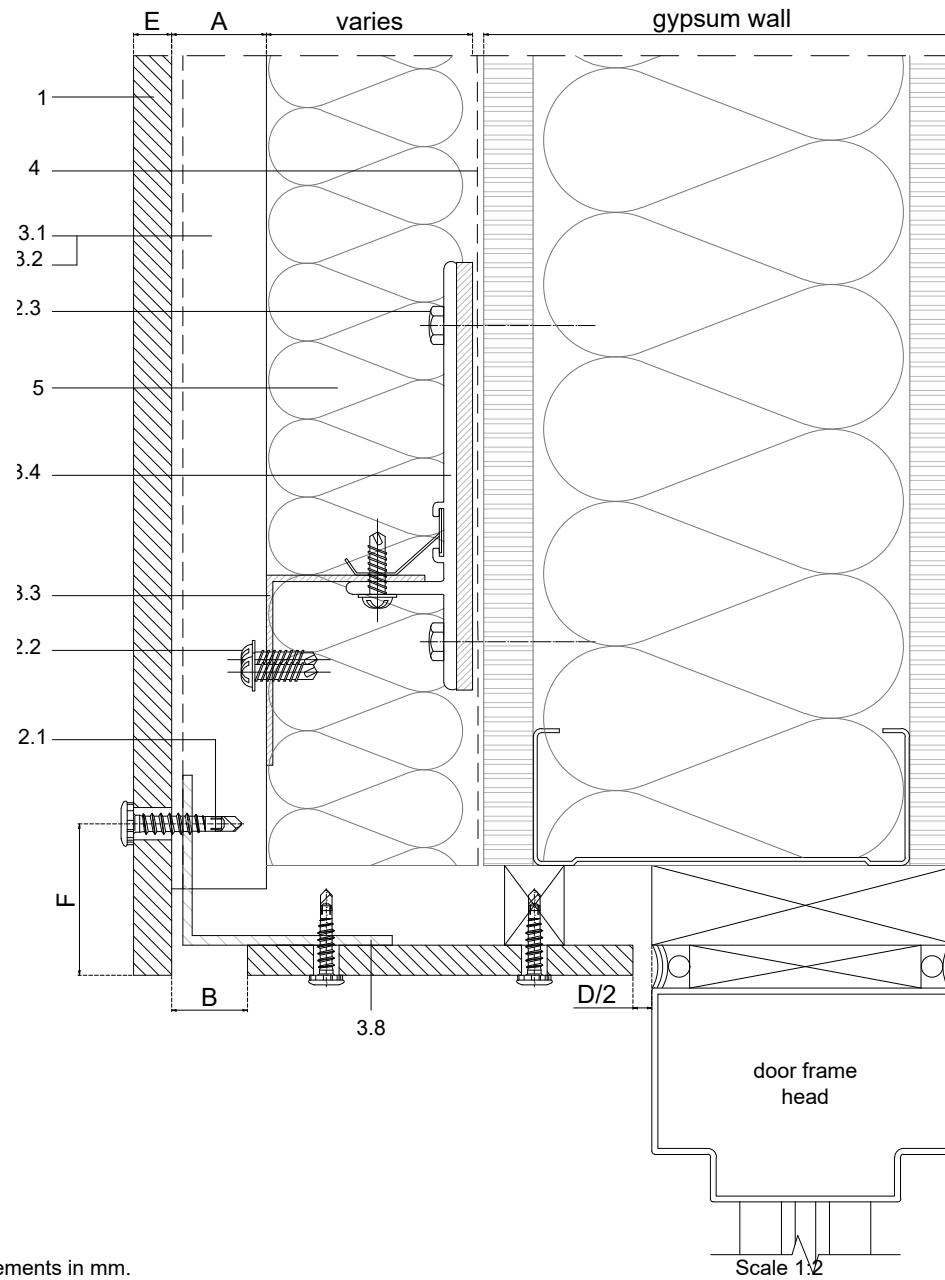
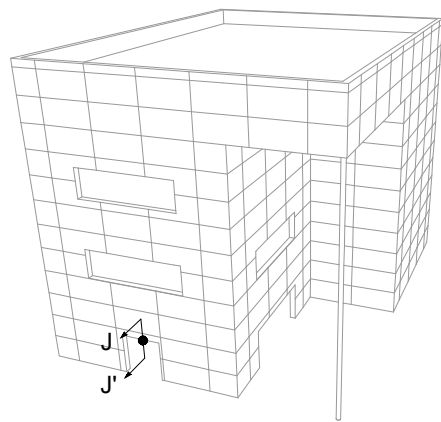


1	NATURCLAD
2	Screws
	2.1 Panel fastener metal
	2.2 Channel fastener - by others
	2.3 Wall fixing screw - by others
3	Profiles
	3.1 Aluminum J profile
	3.2 Aluminum HAT profile
	3.3 Aluminum L profile
	3.4 Alum. wall bracket + Insulator pad
	3.5 Jamb profile - by others
	3.6 Sill profile - by others
	3.7 Coronation profile - by others
4	Water resistant barrier - by others
5	Thermal insulation - by others
6	Vent. screen - by others

A	Required min. air chamber $\geq 3/4"$ (20mm)
B	Circulation of air $\geq 3/4"$ (20mm)
D	Expansion joint $1/4" - 3/8"$ (6-10mm)
E	Panel thickness $\geq 5/16"$ (8mm)
F	Distance from the screws to the panel edges $3/4" - 1 1/2"$ (20-40mm)

Measures: inch

<div>PARKLEX PRODEMA</div> <div>www.parklexprodema.com</div>	PRODUCT	SYSTEM	DRAWN BY	DATE
	NATURCLAD	EXPOSED SCREW FIXING ON ALUMINIUM NFPA 285	Joseba Salbide	01/2022
	PLAN#	TITLE	APPROVED BY	PAGE
	NC1-01-C-J	DETAIL J-J' // DOOR HEAD	Maialen Irastorza	16 / 21



1	NATURCLAD
2	Screws
2.1	Panel fastener metal
2.2	Channel fastener - by others
2.3	Wall fixing screw - by others
3	Profiles
3.1	Aluminum J profile
3.2	Aluminum HAT profile
3.3	Aluminum L profile
3.4	Alum. wall bracket + Insulator pad
3.5	Jamb profile - by others
3.6	Sill profile - by others
3.7	Coronation profile - by others
3.8	Union profile - by others
4	Water resistant barrier - by others
5	Thermal insulation - by others
6	Vent. screen - by others

A	Required min. air chamber $\geq 3/4"$ (20mm)
B	Circulation of air $\geq 3/4"$ (20mm)
D	Expansion joint $1/4" - 3/8"$ (6-10mm)
E	Panel thickness $\geq 5/16"$ (8mm)
F	Distance from the screws to the panel edges $3/4" - 1 1/2"$ (20-40mm)

Measurements in inches are approximated. Real measurements in mm.

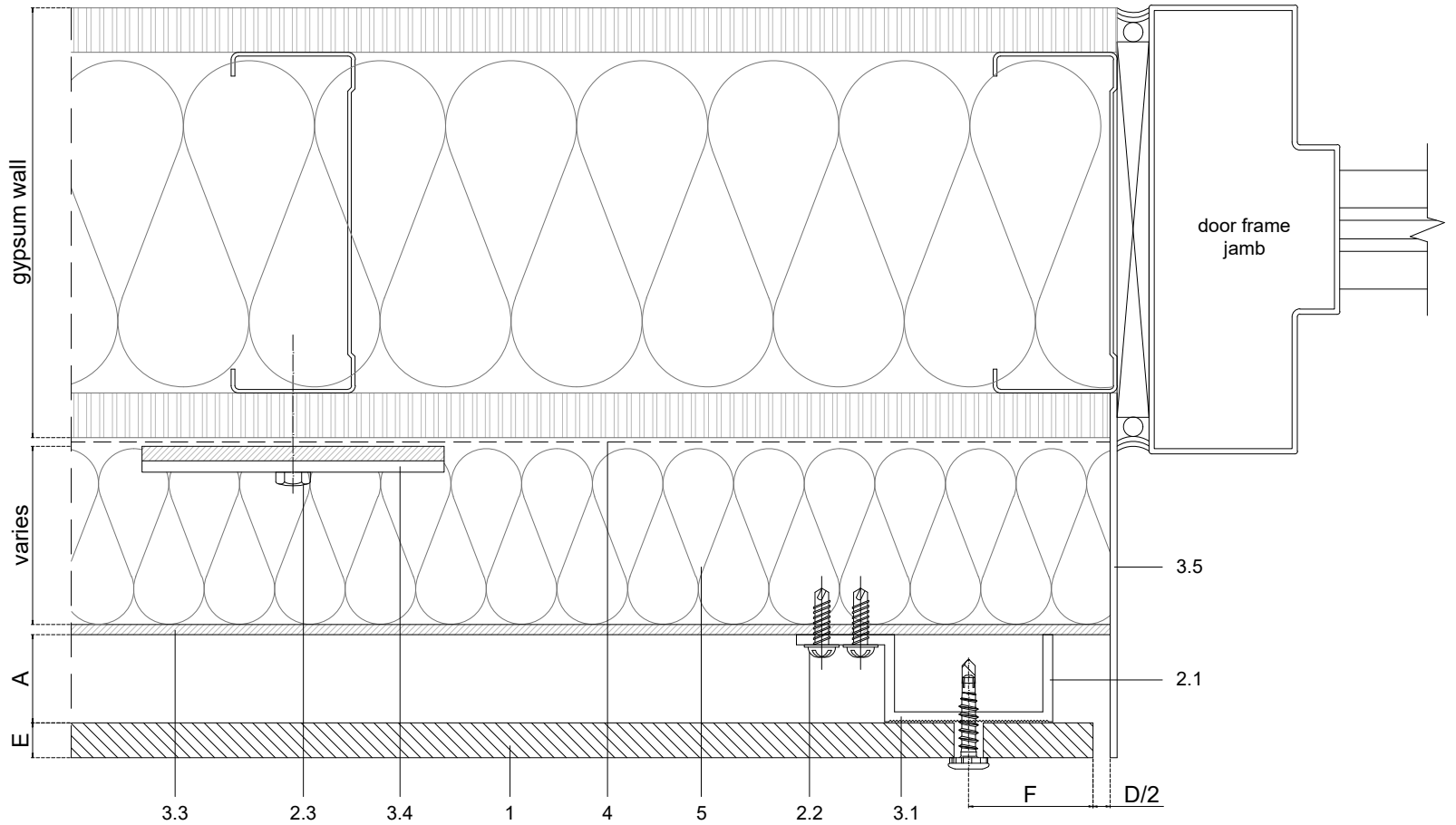
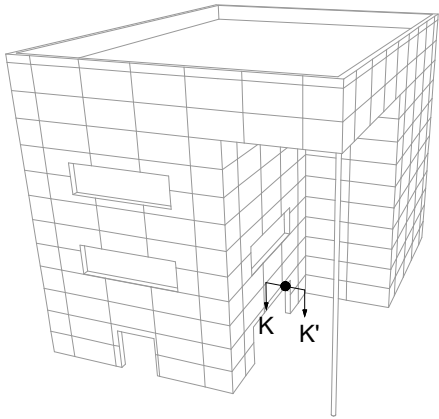
Measures: inch

PARKLEX PRODEMA
www.parklexprodema.com

PRODUCT	NATURCLAD	SYSTEM	EXPOSED SCREW FIXING ON ALUMINIUM NFPA 285	DRAWN BY	Joseba Salbide	DATE	01/2022
PLAN#	NC1-01-C-J2	TITLE	DETAIL J-J' // DOOR HEAD 2	APPROVED BY	Maialen Irastorza	PAGE	17 / 21

1	NATURCLAD
2	Screws
2.1	Panel fastener metal
2.2	Channel fastener - by others
2.3	Wall fixing screw - by others
3	Profiles
3.1	Aluminum J profile
3.2	Aluminum HAT profile
3.3	Aluminum L profile
3.4	Alum. wall bracket + Insulator pad
3.5	Jamb profile - by others
3.6	Sill profile - by others
3.7	Coronation profile - by others
4	Water resistant barrier - by others
5	Thermal insulation - by others
6	Vent. screen - by others

A	Required min. air chamber $\geq 3/4"$ (20mm)
B	Circulation of air $\geq 3/4"$ (20mm)
D	Expansion joint $1/4" - 3/8"$ (6-10mm)
E	Panel thickness $\geq 5/16"$ (8mm)
F	Distance from the screws to the panel edges $3/4" - 1 1/2"$ (20-40mm)



Measurements in inches are approximated. Real measurements in mm.

Scale 1:2

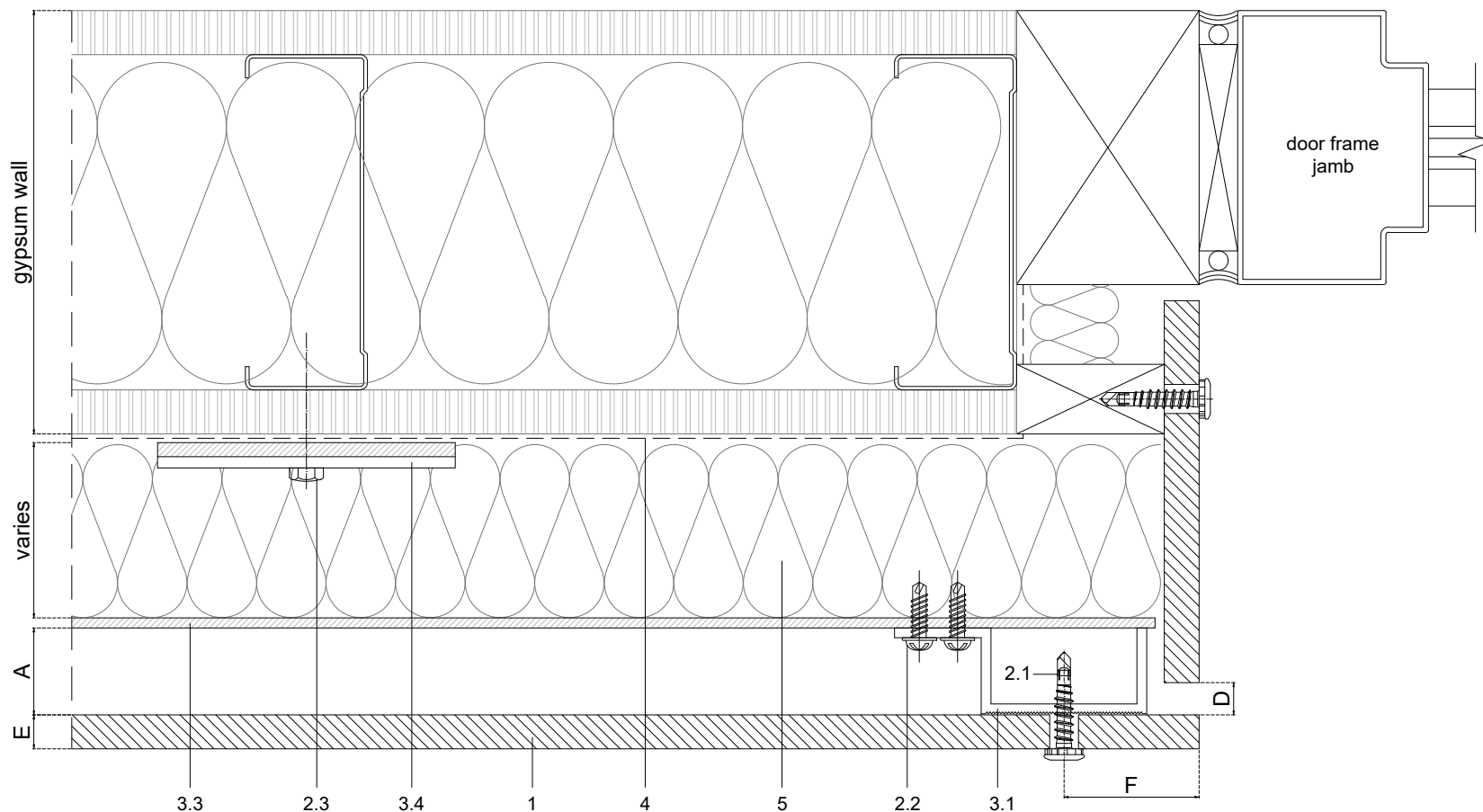
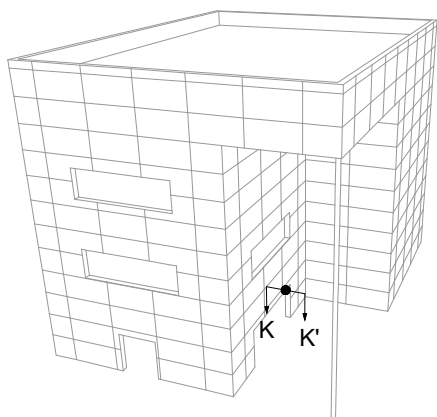
Measures: inch

PARKLEX PRODEMA
www.parklexprodema.com

PRODUCT	NATURCLAD	SYSTEM	EXPOSED SCREW FIXING ON ALUMINIUM NFPA 285	DRAWN BY	Joseba Salbide	DATE	01/2022
PLAN#	NC1-01-C-K	TITLE	DETAIL K-K' // DOOR JAMB	APPROVED BY	Maialen Irastorza	PAGE	18 / 21

1	NATURCLAD
2	Screws
2.1	Panel fastener metal
2.2	Channel fastener - by others
2.3	Wall fixing screw - by others
3	Profiles
3.1	Aluminum J profile
3.2	Aluminum HAT profile
3.3	Aluminum L profile
3.4	Alum. wall bracket + Insulator pad
3.5	Jamb profile - by others
3.6	Sill profile - by others
3.7	Coronation profile - by others
4	Water resistant barrier - by others
5	Thermal insulation - by others
6	Vent. screen - by others

A	Required min. air chamber $\geq 3/4"$ (20mm)
B	Circulation of air $\geq 3/4"$ (20mm)
D	Expansion joint $1/4" - 3/8"$ (6-10mm)
E	Panel thickness $\geq 5/16"$ (8mm)
F	Distance from the screws to the panel edges $3/4" - 1 1/2"$ (20-40mm)



Measurements in inches are approximated. Real measurements in mm.

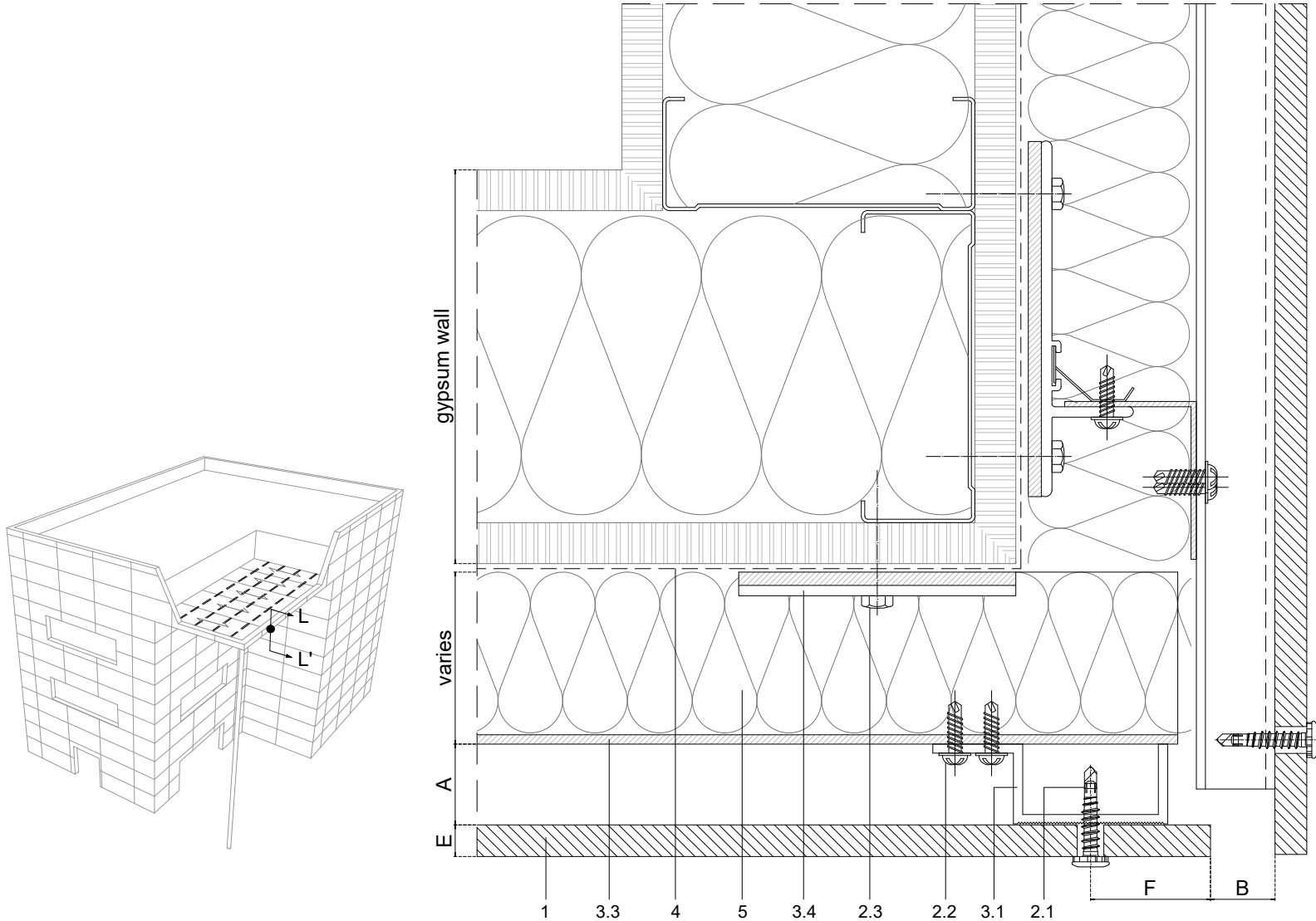
Scale 1:2

Measures: inch

PARKLEX PRODEMA

www.parklexprodema.com

PRODUCT	NATURCLAD	SYSTEM	EXPOSED SCREW FIXING ON ALUMINIUM NFPA 285	DRAWN BY	Joseba Salbide	DATE	01/2022
PLAN#	NC1-01-C-K2	TITLE	DETAIL K-K' // DOOR JAMB 2	APPROVED BY	Maialen Irastorza	PAGE	19 / 21



1	NATURCLAD
2	Screws
2.1	Panel fastener metal
2.2	Channel fastener - by others
2.3	Wall fixing screw - by others
3	Profiles
3.1	Aluminum J profile
3.2	Aluminum HAT profile
3.3	Aluminum L profile
3.4	Alum. wall bracket + Insulator pad
3.5	Jamb profile - by others
3.6	Sill profile - by others
3.7	Coronation profile - by others
4	Water resistant barrier - by others
5	Thermal insulation - by others
6	Vent. screen - by others
A	Required min. air chamber $\geq 3/4"$ (20mm)
B	Circulation of air $\geq 3/4"$ (20mm)
D	Expansion joint $1/4" - 3/8"$ (6-10mm)
E	Panel thickness $\geq 5/16"$ (8mm)
F	Distance from the screws to the panel edges $3/4" - 1 1/2"$ (20-40mm)

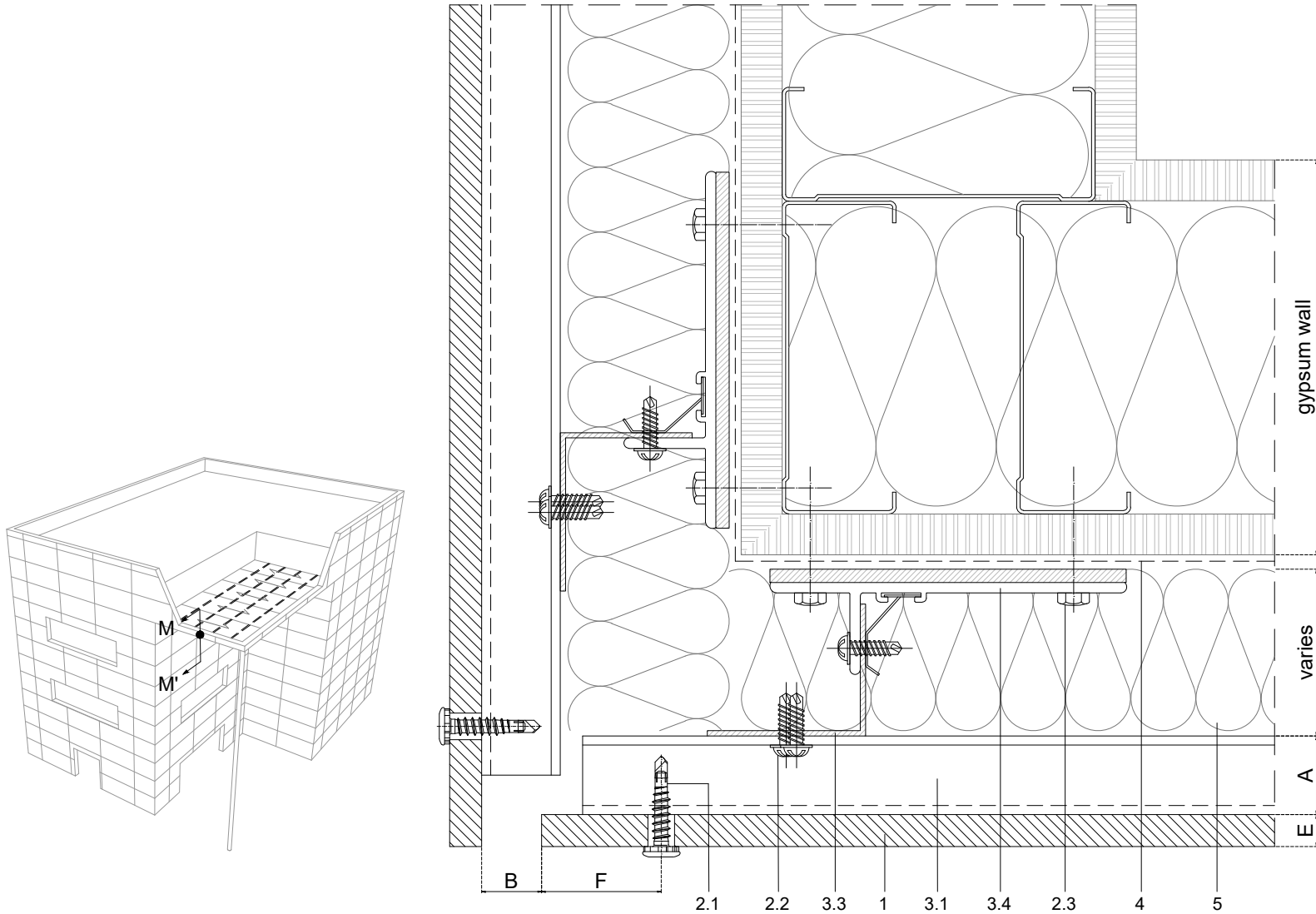
Measurements in inches are approximated. Real measurements in mm.

Scale 1:2

Measures: inch

PARKLEX PRODEMA
www.parklexprodema.com

PRODUCT	NATURCLAD	SYSTEM	EXPOSED SCREW FIXING ON ALUMINIUM NFPA 285	DRAWN BY	Joseba Salbide	DATE	01/2022
PLAN#	NC1-01-C-L	TITLE	DETAIL L-L' // VENTILATION DROPPED CEILING	APPROVED BY	Maialen Irastorza	PAGE	20 / 21



1	NATURCLAD
2	Screws
2.1	Panel fastener metal
2.2	Channel fastener - by others
2.3	Wall fixing screw - by others
3	Profiles
3.1	Aluminum J profile
3.2	Aluminum HAT profile
3.3	Aluminum L profile
3.4	Alum. wall bracket + insulator pad
3.5	Jamb profile - by others
3.6	Sill profile - by others
3.7	Coronation profile - by others
4	Water resistant barrier - by others
5	Thermal insulation - by others
6	Vent. screen - by others

A	Required min. air chamber $\geq 3/4"$ (20mm)
B	Circulation of air $\geq 3/4"$ (20mm)
D	Expansion joint $1/4" - 3/8"$ (6-10mm)
E	Panel thickness $\geq 5/16"$ (8mm)
F	Distance from the screws to the panel edges $3/4" - 1 1/2"$ (20-40mm)

Measurements in inches are approximated. Real measurements in mm.

Scale 1:2

Measures: inch

PARKLEX PRODEMA
www.parklexprodema.com

PRODUCT	NATURCLAD	SYSTEM	EXPOSED SCREW FIXING ON ALUMINIUM NFPA 285	DRAWN BY	Joseba Salbide	DATE	01/2022
PLAN#	NC1-01-C-M	TITLE	DETAIL M-M' // SIDE VENTILATION DROPPED CEILING	APPROVED BY	Maialen Irastorza	PAGE	21 / 21