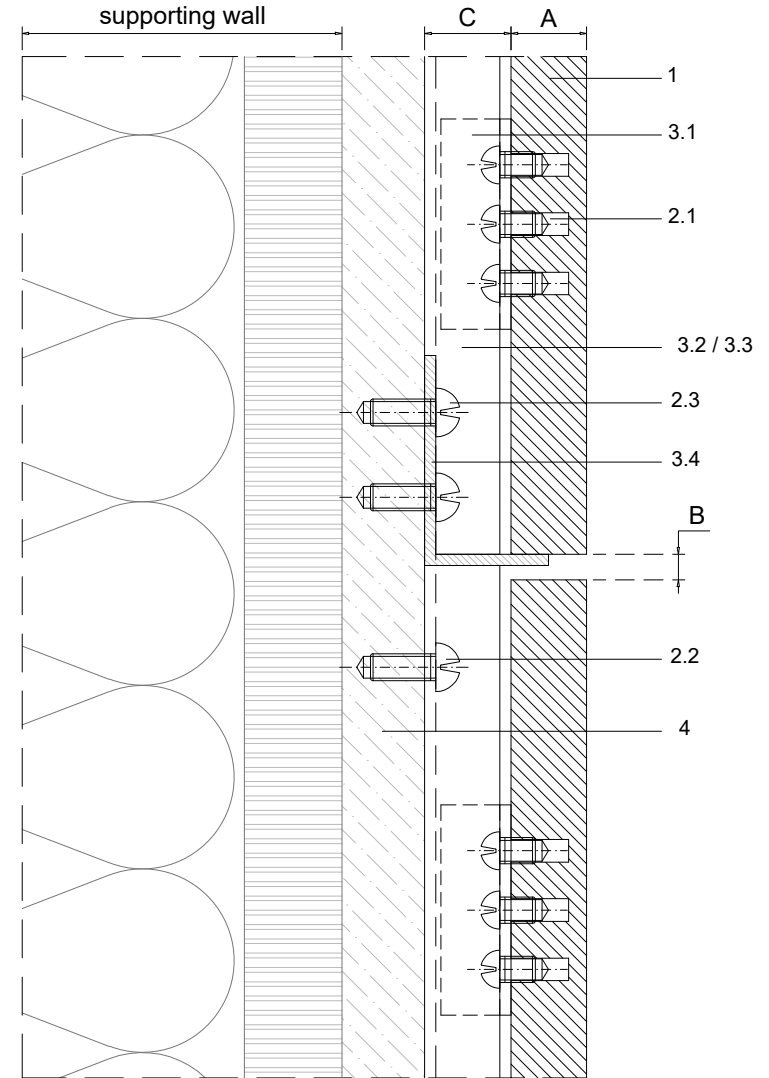
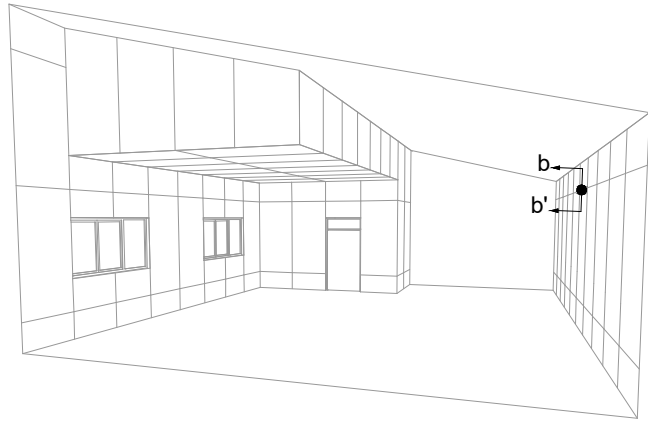


1	NATURHARDPANEL
2	Screws
2.1	Fixing screw
2.2	Wall fixing screw - by others
2.3	Stopper fixing screw - by others
3	Profiles
3.1	Removable / non removable clip
3.2	Single rail
3.3	Joint rail
3.4	Stopper
4	Supporting panel - by others

A	Panel thickness 5/16" - 1/2" (8-12mm)
B	Expansion joint 1/8" (3mm)
C	Chamber depth 3/8" (10mm)



Measurements in inches are approximated. Real measurements in mm.

Scale 1:1

Measures: inch

PARKLEX PRODEMA
www.parklexprodema.com

PRODUCT	SYSTEM	DRAWN BY	DATE
NATURHARDPANEL	REMOVABLE CLIP SYSTEM VERTICAL PIECE LAYOUT	Joseba Salbide	01/2022
PLAN#	TITLE	APPROVED BY	PAGE
NH1-01V-B	DETAIL B-B' // HORIZONTAL JOINT	Maialen Irastorza	3 / 15