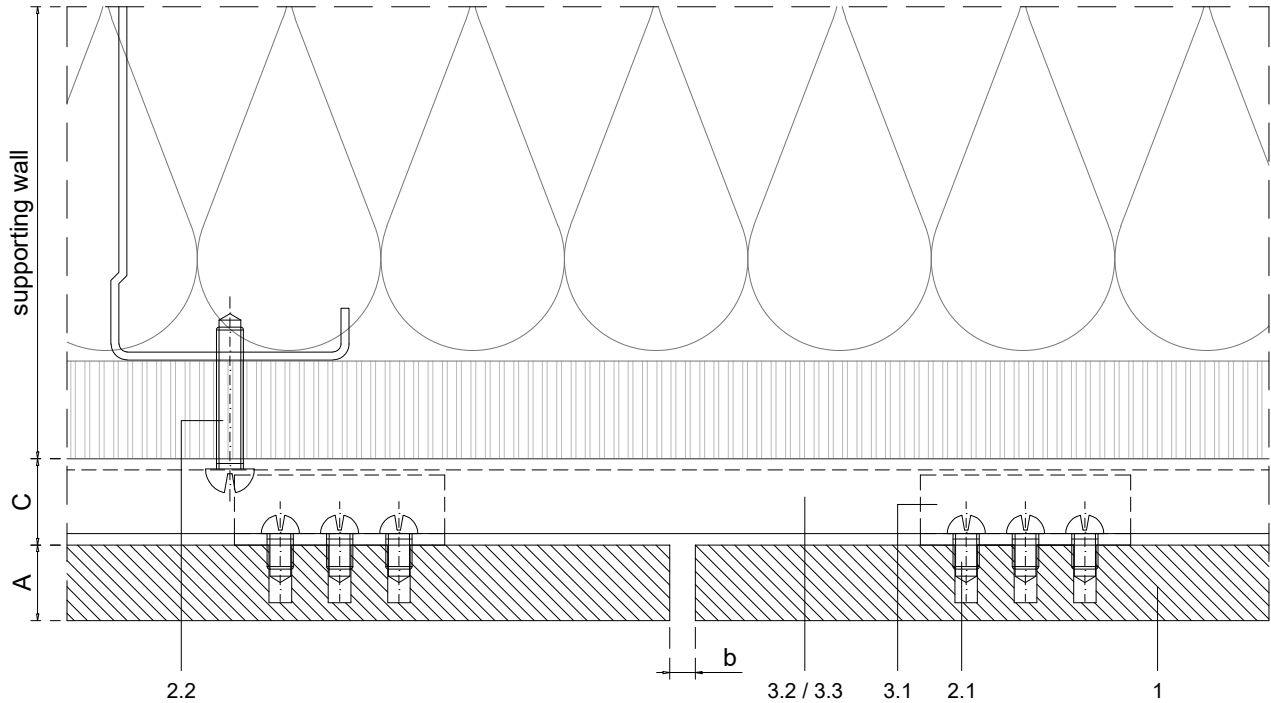
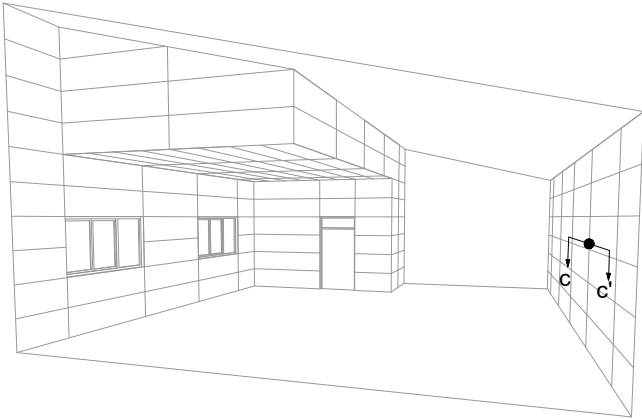


1	NATURHARDPANEL
2	Screws
2.1	Fixing screw
2.2	Wall fixing screw - by others
3	Profiles
3.1	Removable / non removable clip
3.2	Single rail
3.3	Joint rail
A	Panel thickness 5/16" - 1/2" (8-12mm)
B	Expansion joint 1/8" (3mm)
C	Chamber depth 3/8" (10mm)



Measurements in inches are approximated. Real measurements in mm.

Scale 1:1

Measures: inch

<div> <div>PARKLEX PRODEMA</div> <div>www.parklexprodema.com</div> </div>	<div>PRODUCT</div> <div>NATURHARDPANEL</div>	<div>SYSTEM</div> <div>REMOVABLE CLIP SYSTEM HORIZONTAL PIECE LAYOUT</div>	<div>DRAWN BY</div> <div>Joseba Salbide</div>	<div>DATE</div> <div>01/2022</div>
	<div>PLAN#</div> <div>NH1-01H-C</div>	<div>TITLE</div> <div>DETAIL C-C' // VERTICAL JOINT</div>	<div>APPROVED BY</div> <div>Maialen Irastorza</div>	<div>PAGE</div> <div>4 / 15</div>