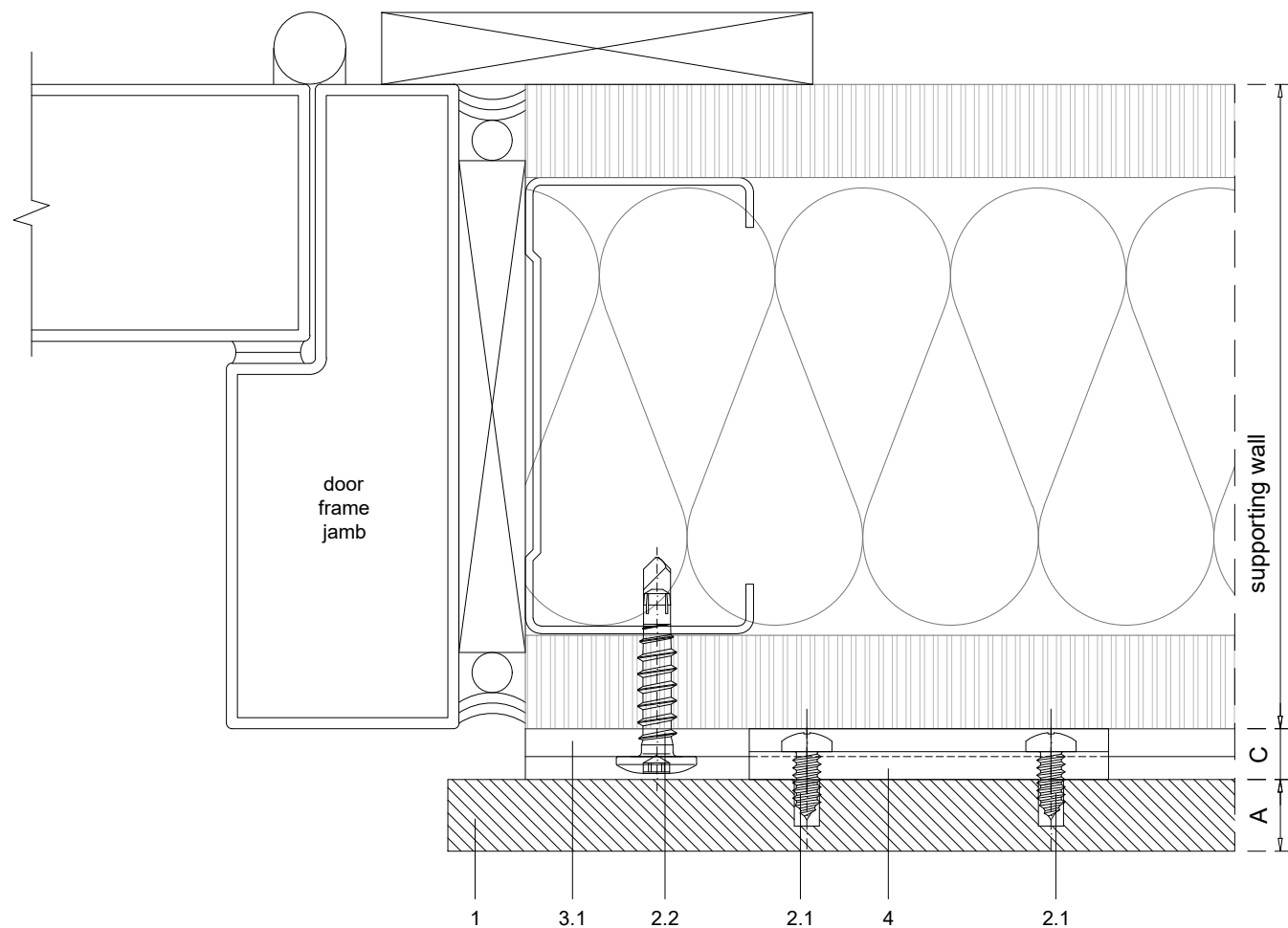
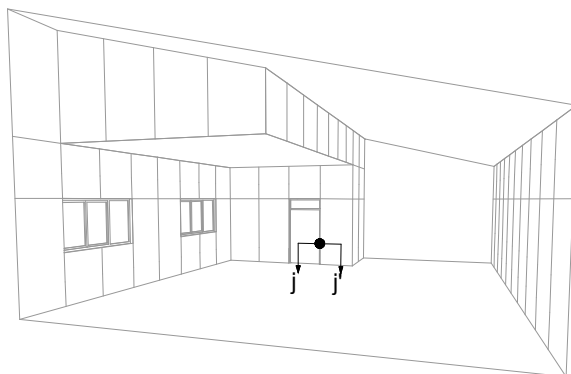


| | |
|-----|--|
| 1 | NATURHARDPANEL |
| 2 | Screws |
| 2.1 | Panel screw - on the rear of the panel |
| 2.2 | Wall fixing screw - by others |
| 3 | Profiles |
| 3.1 | Interior hanging guide |
| 4 | Interior hook |

| | |
|---|--------------------------|
| A | Panel thickness min. 8mm |
| B | Expansion joint 6mm |
| C | Chamber depth min. 7mm |



Scale 1:1

Measures: mm

PARKLEX PRODEMA
www.parklexprodema.com

| | | | | | | | |
|---------|----------------|--------|------------------------------|-------------|-------------------|------|---------|
| PRODUCT | NATURHARDPANEL | SYSTEM | INTERIOR HANGING HOOK SYSTEM | DRAWN BY | Joseba Salbide | DATE | 01/2022 |
| PLAN# | NH2-05-J | TITLE | DETAIL J-J' // DOOR JAMB | APPROVED BY | Maialen Irastorza | PAGE | 11 / 13 |