
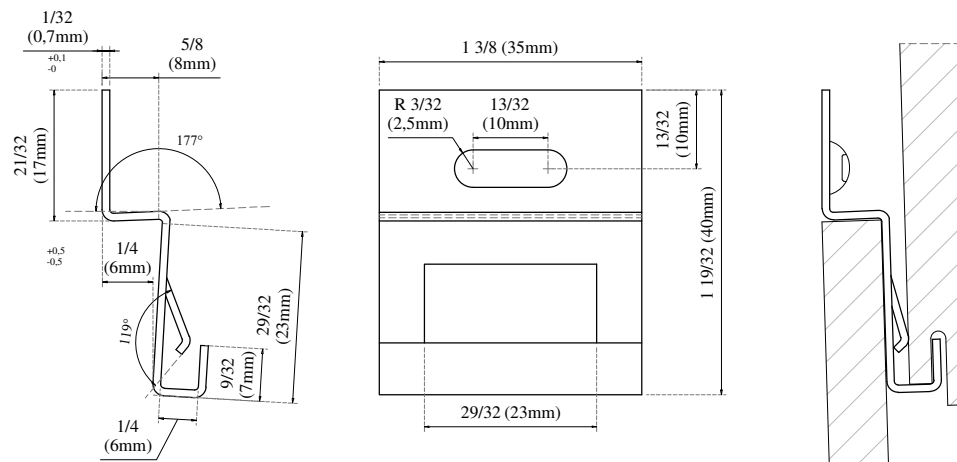


A: BASE VENTILATION
 B: HEAD VENTILATION
 C: TYP. HORIZONTAL JOINT
 D: TYP. VERTICAL JOINT
 E: WINDOW CILL
 F: WINDOW JAMB

G: WINDOW HEAD
 H: INSIDE CORNER
 I: OUTSIDE CORNER
 J: DOOR HEAD
 K: DOOR JAMB

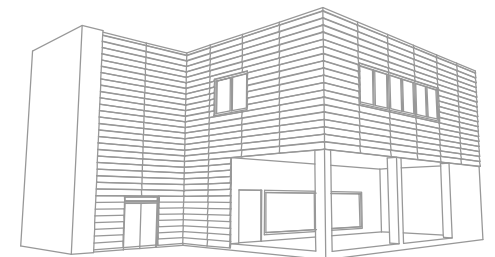
Measurements in inches are approximated. Real measurements in mm.

Project		CLAPBOARD FAÇADE, WITH BACKING PLATE	
Plan		GENERAL PERSPECTIVE	
Units		Product	
Inches (")		 PRODEX	
Plan code		The updated version of this present installation detail can be found on the Prodema web.	
PREX 1-04-A-GP		Page	1



Anchor clip detail

Measurements in inches are approximated.
Real measurements in mm.



Project

**CLAPBOARD FAÇADE,
WITH BACKING PLATE**

Plan

FIXING DETAIL

Prodema
NATURAL WOOD BEAUTY

Product

PRODEX

Units

Inches (")

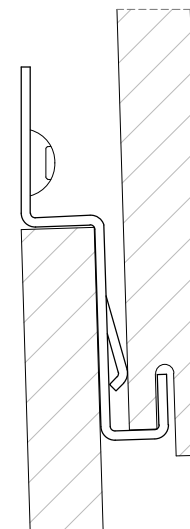
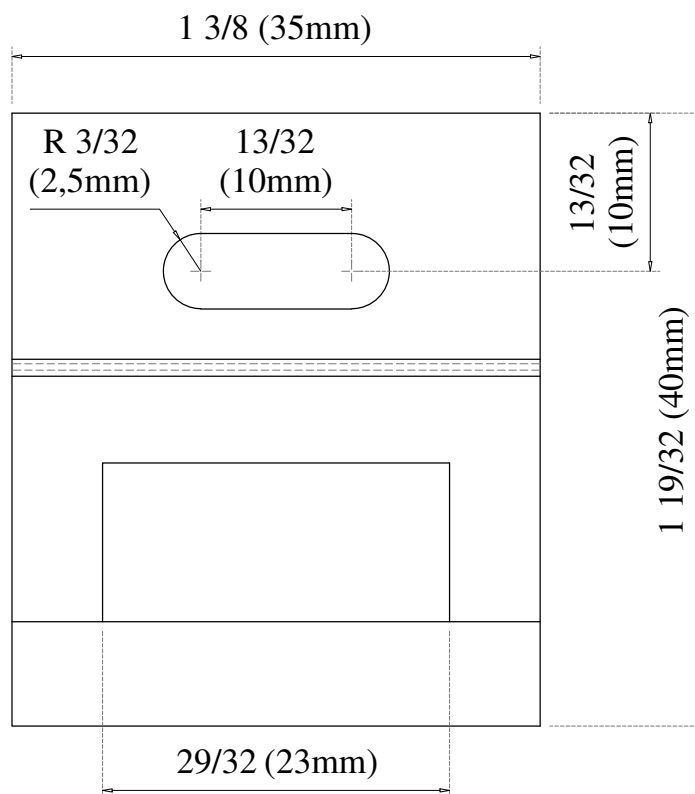
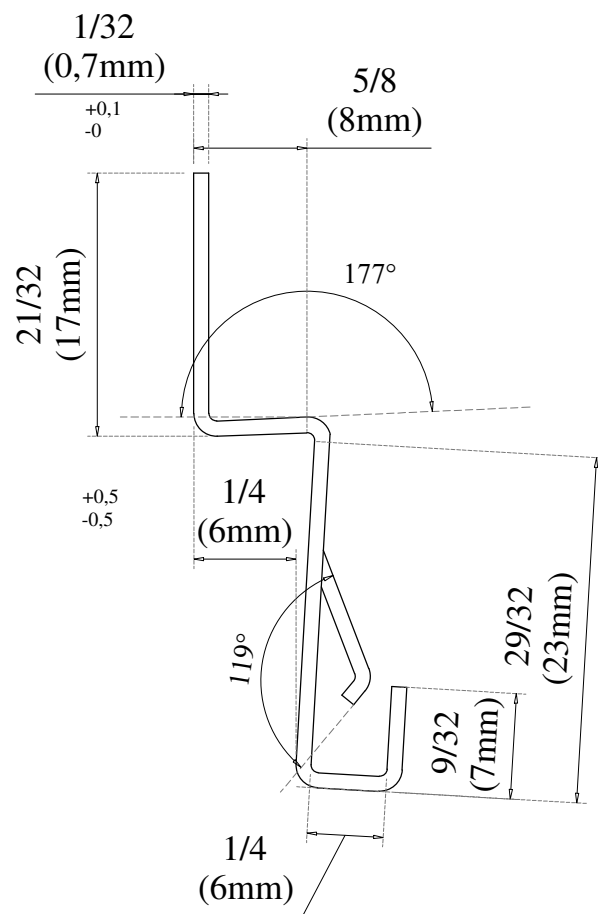
The updated version of this
present installation detail can
be found on the Prodema web.

Plan code

PREX 1-04-A-FIX

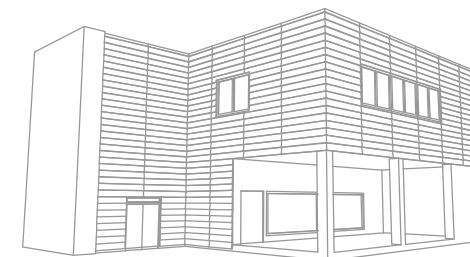
Page

2



Fixing clamp detail

Measurements in inches are approximated.
Real measurements in mm.



Project

**CLAPBOARD FAÇADE,
WITH BACKING PLATE**

Plan

FIXING DETAIL

Prodema
NATURAL WOOD BEAUTY

Product

PRODEX

Units

Inches (")

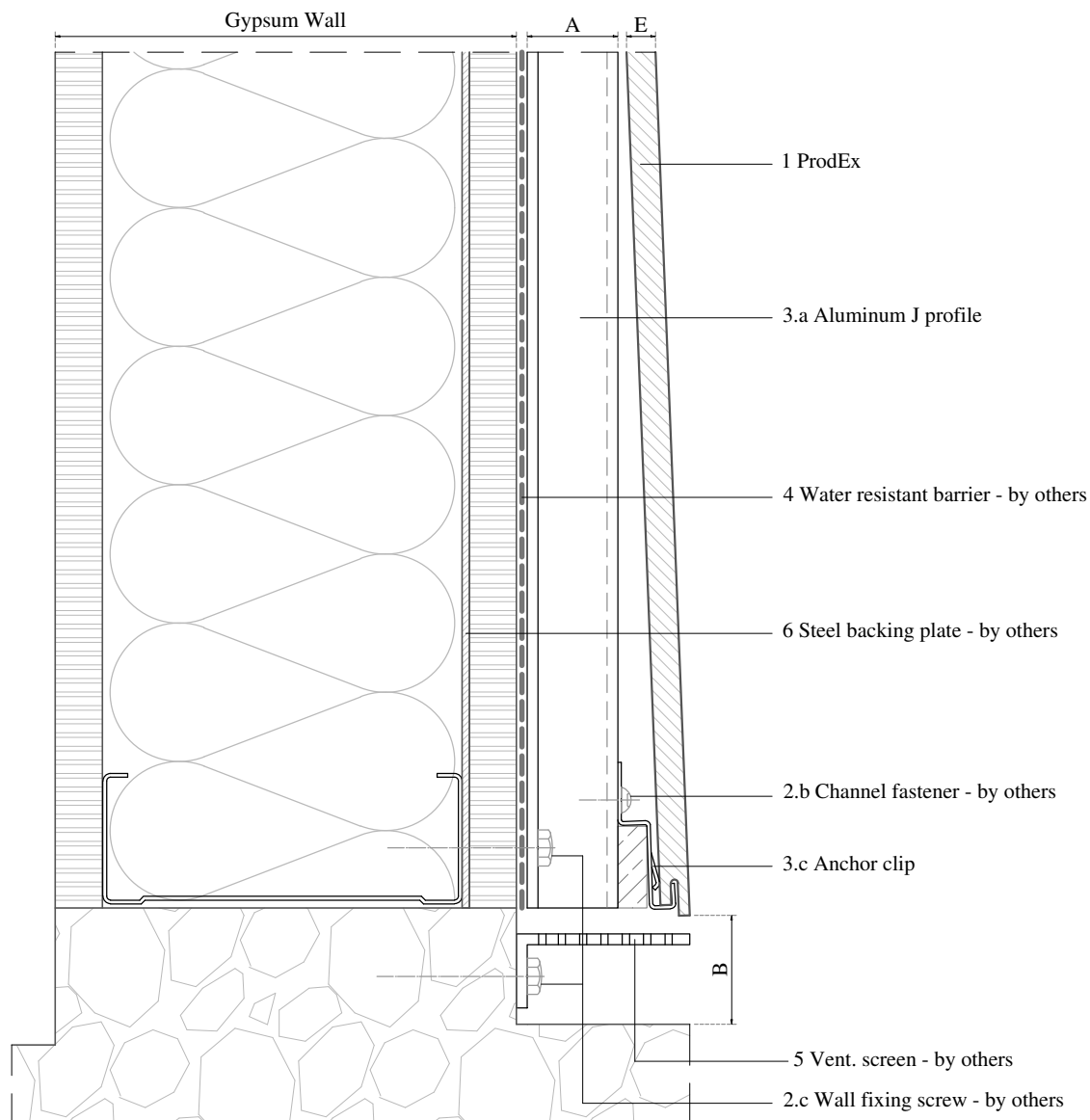
The updated version of this
present installation detail can
be found on the Prodema web.

Plan code

PREX 1-04-A-FIX

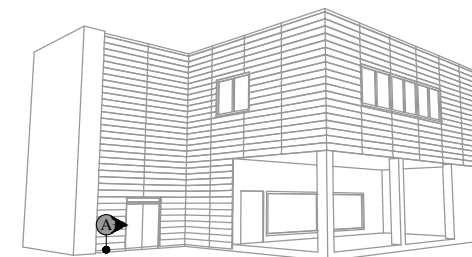
Page

2



E	Panel thickness 5/16" (8mm)
B	Circulation of air $\geq 3/4"$ (20mm)
A	Required min. air chamber $\geq 3/4"$ (20mm)
6	Steel backing plate - by others
5	Vent. screen - by others
4	Water resistant barrier - by others
3.c	Anchor clip
3.a	Aluminum J profile
3	Profiles
2.c	Wall fixing screw - by others
2.b	Channel fastener - by others
2	Screws
1	ProdEx

Measurements in inches are approximated.
Real measurements in mm.



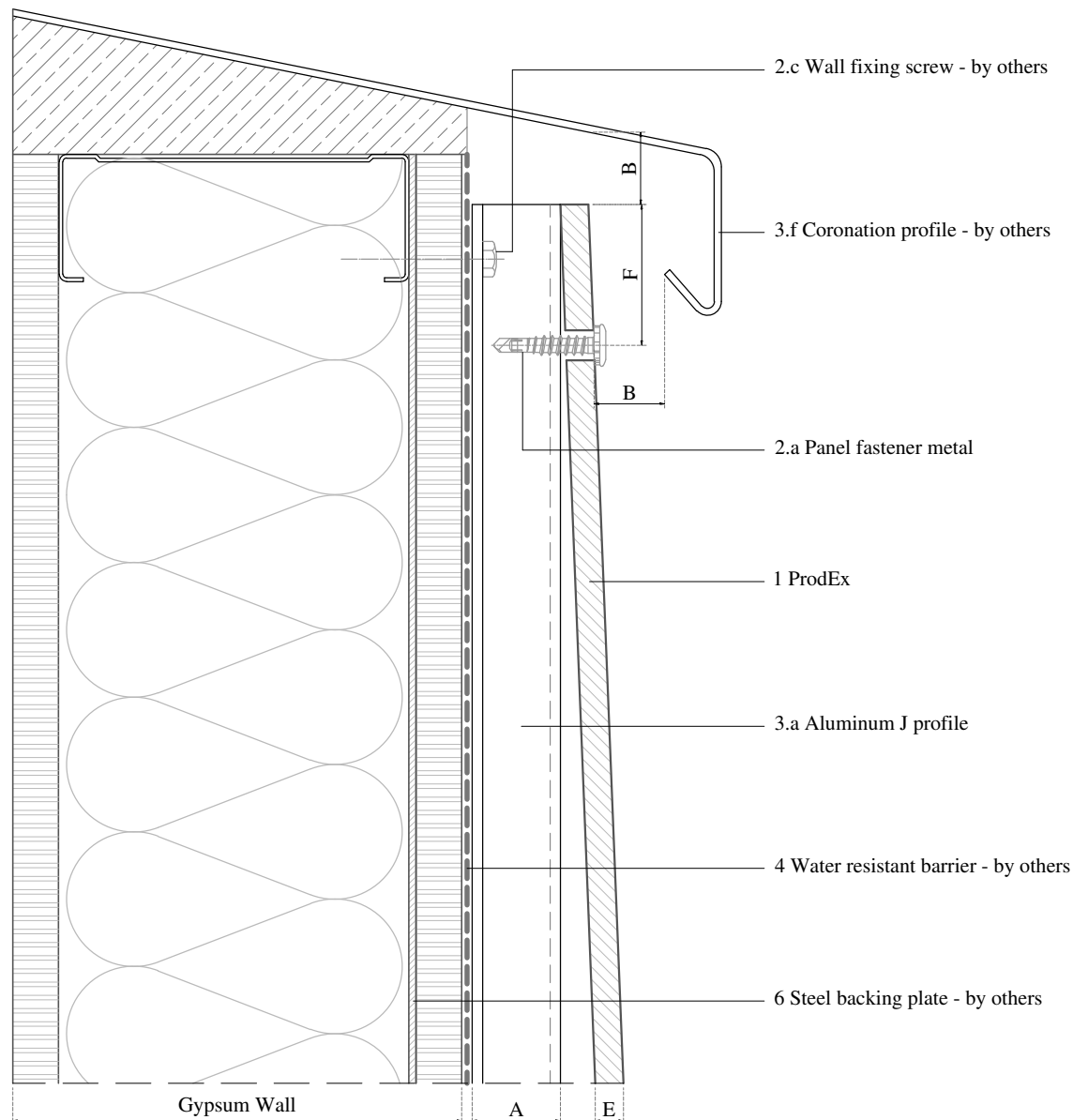
Project

**CLAPBOARD FAÇADE,
WITH BACKING PLATE**

Plan

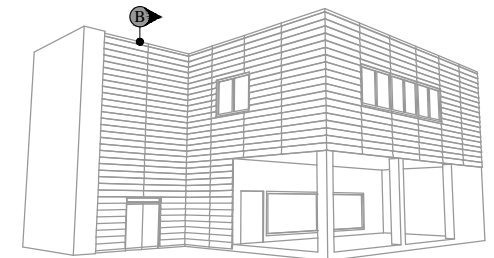
**DETAIL A
BASE VENTILATION**

<div> <div> Prodema NATURAL WOOD BEAUTY </div> <div> Product PRODEX </div> </div>	
Units	The updated version of this present installation detail can be found on the Prodema web.
Inches (")	
Plan code PREX 1-04-A-A	Page 3



F	Distance from the screws to the panel edges 3/4" - 1 1/2" (20-40mm)
E	Panel thickness 5/16" (8mm)
B	Circulation of air $\geq 3/4"$ (20mm)
A	Required min. air chamber $\geq 3/4"$ (20mm)
6	Steel backing plate - by others
4	Water resistant barrier - by others
3.f	Coronation profile - by others
3.a	Aluminum J profile
3	Profiles
2.c	Wall fixing screw - by others
2.a	Panel fastener metal
2	Screws
1	ProdEx

Measurements in inches are approximated.
Real measurements in mm.



Project

**CLAPBOARD FAÇADE,
WITH BACKING PLATE**

Plan

**DETAIL B
HEAD VENTILATION**

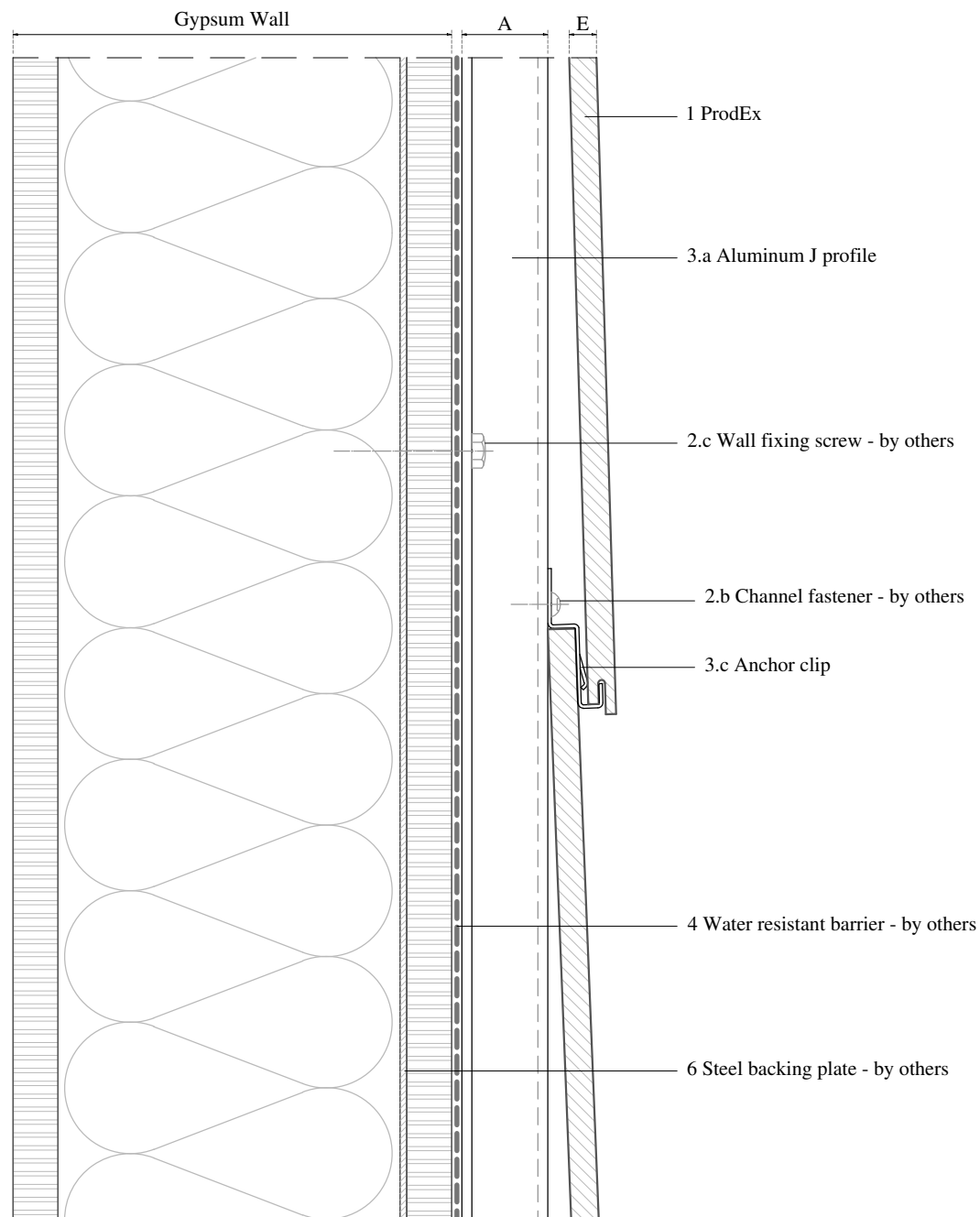
	Product
	PRODEX

Units	The updated version of this present installation detail can be found on the Prodema web.
Inches (")	

Plan code
PREX 1-04-A-B

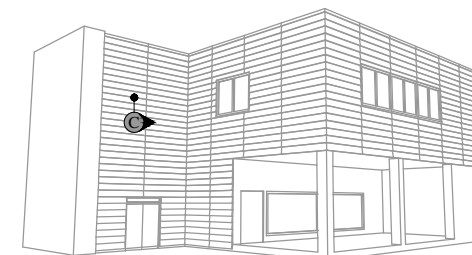
Page

4



E	Panel thickness 5/16" (8mm)
A	Required min. air chamber $\geq 3/4"$ (20mm)
6	Steel backing plate - by others
4	Water resistant barrier - by others
3.c	Anchor clip
3.a	Aluminum J profile
3	Profiles
2.c	Wall fixing screw - by others
2.b	Channel fastener - by others
2	Screws
1	ProdEx

Measurements in inches are approximated.
Real measurements in mm.



Project

**CLAPBOARD FAÇADE,
WITH BACKING PLATE**

Plan

**DETAIL C
TYPICAL HORIZONTAL JOINT**

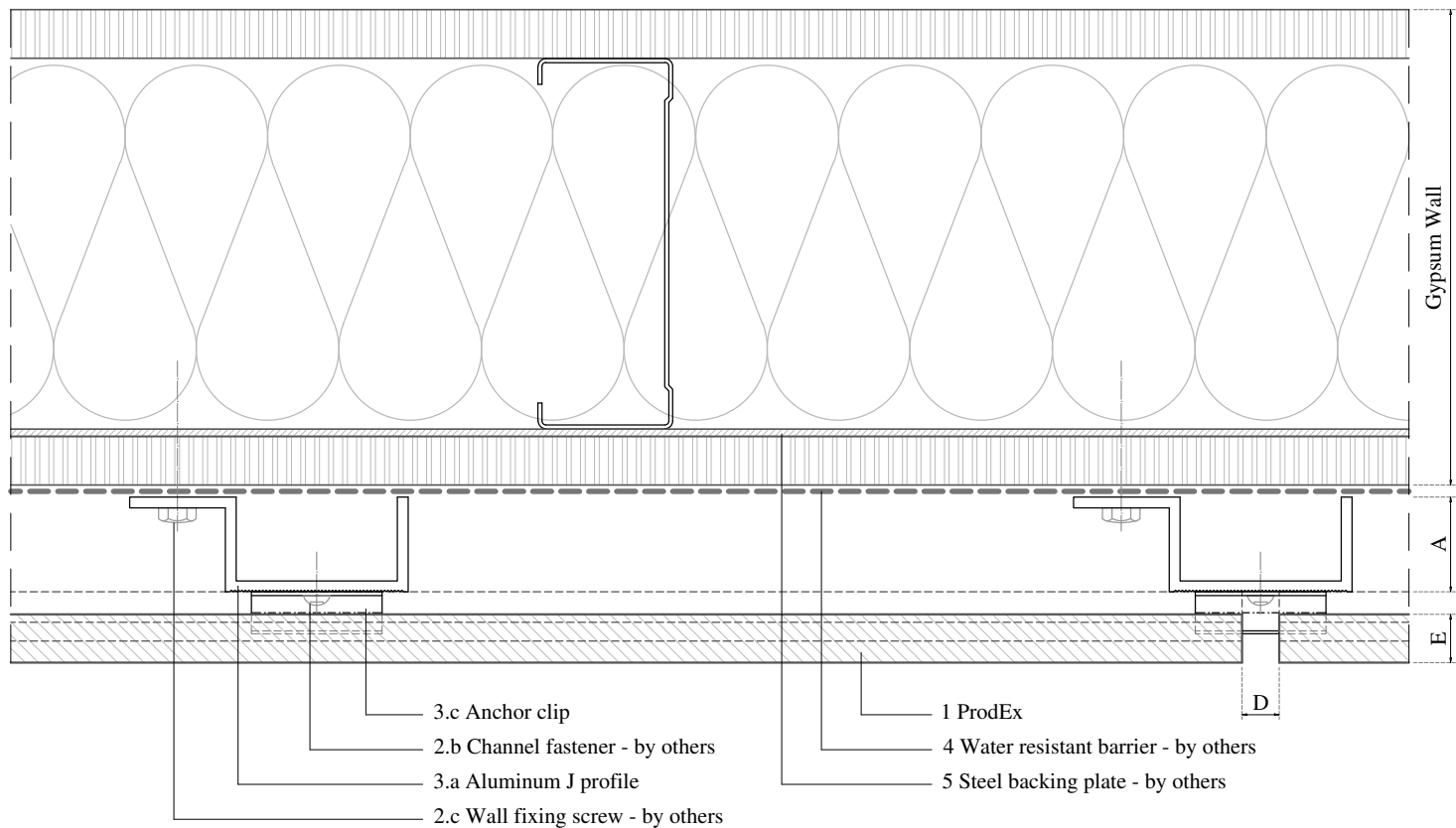
	Product
	PRODEX

Units	The updated version of this present installation detail can be found on the Prodema web.
Inches (")	

Plan code
PREX 1-04-A-C

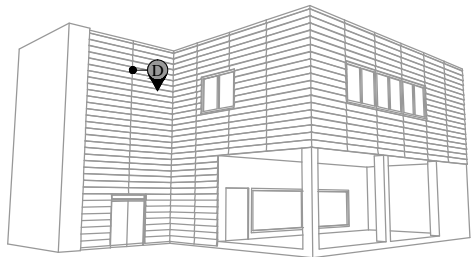
Page

5



E	Panel thickness 5/16" (8mm)
D	Expansion joint 1/4" - 3/8" (6-10mm)
A	Required min. air chamber $\geq 3/4"$ (20mm)
6	Steel backing plate - by others
4	Water resistant barrier - by others
3.c	Anchor clip
3.a	Aluminum J profile
3	Profiles
2.c	Wall fixing screw - by others
2.b	Channel fastener - by others
2	Screws
1	ProdEx

Measurements in inches are approximated.
Real measurements in mm.



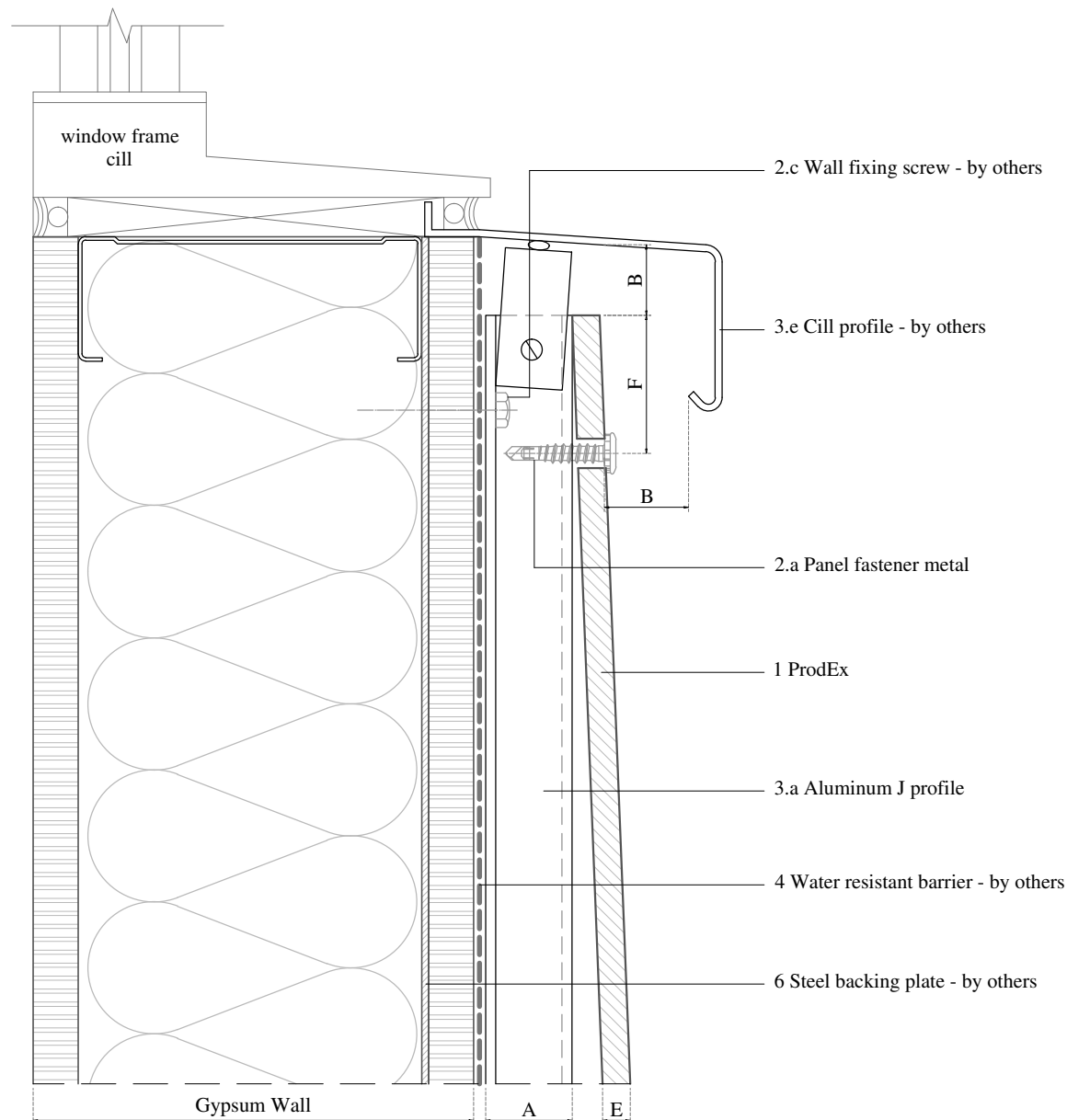
Project

**CLAPBOARD FAÇADE,
WITH BACKING PLATE**

Plan

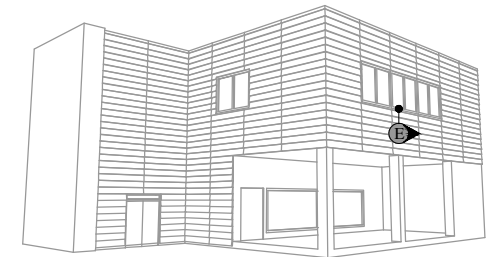
**DETAIL D
TYPICAL VERTICAL JOINT**

<div> <div>Prodema</div> <div>NATURAL WOOD BEAUTY</div> </div>		<div>Product</div> <div>PRODEX</div>
<div>Units</div> <div>Inches (")</div>	<div>The updated version of this present installation detail can be found on the Prodema web.</div>	
<div>Plan code</div> <div>PREX 1-04-A-D</div>	<div>Page</div> <div>6</div>	



F	Distance from the screws to the panel edges 3/4" - 1 1/2" (20-40mm)
E	Panel thickness 5/16" (8mm)
B	Circulation of air \geq 3/4" (20mm)
A	Required min. air chamber \geq 3/4" (20mm)
6	Steel backing plate - by others
4	Water resistant barrier - by others
3.e	Cill profile - by others
3.a	Aluminum J profile
3	Profiles
2.c	Wall fixing screw - by others
2.a	Panel fastener metal
2	Screws
1	ProdEx

Measurements in inches are approximated.
Real measurements in mm.



Project

**CLAPBOARD FAÇADE,
WITH BACKING PLATE**

Plan

**DETAIL E
WINDOW CILL**

Prodema
NATURAL WOOD BEAUTY

Product

PRODEX

Units

Inches (")

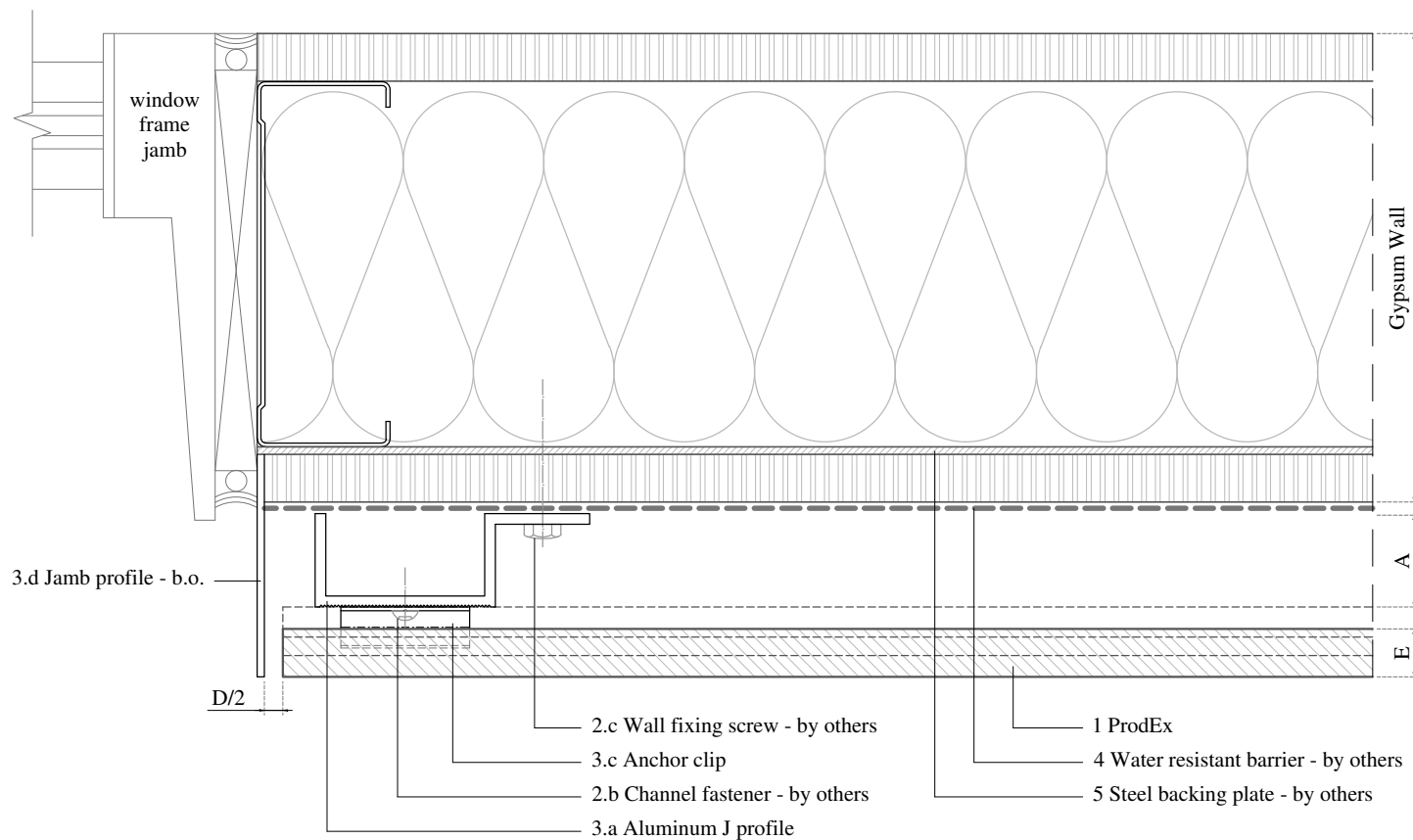
The updated version of this
present installation detail can
be found on the Prodema web.

Plan code

PREX 1-04-A-E

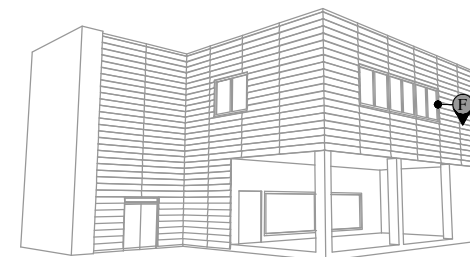
Page

7



E	Panel thickness 5/16" (8mm)
D	Expansion joint 1/4" - 3/8" (6-10mm)
A	Required min. air chamber \geq 3/4" (20mm)
6	Steel backing plate - by others
4	Water resistant barrier - by others
3.d	Jamb profile - by others
3.c	Anchor clip
3.a	Aluminum J profile
3	Profiles
2.c	Wall fixing screw - by others
2.b	Channel fastener - by others
2	Screws
1	ProdEx

Measurements in inches are approximated.
Real measurements in mm.



Project

**CLAPBOARD FAÇADE,
WITH BACKING PLATE**

Plan

**DETAIL F
WINDOW JAMB**

Prodema
NATURAL WOOD BEAUTY

Product

PRODEX

Units

Inches (")

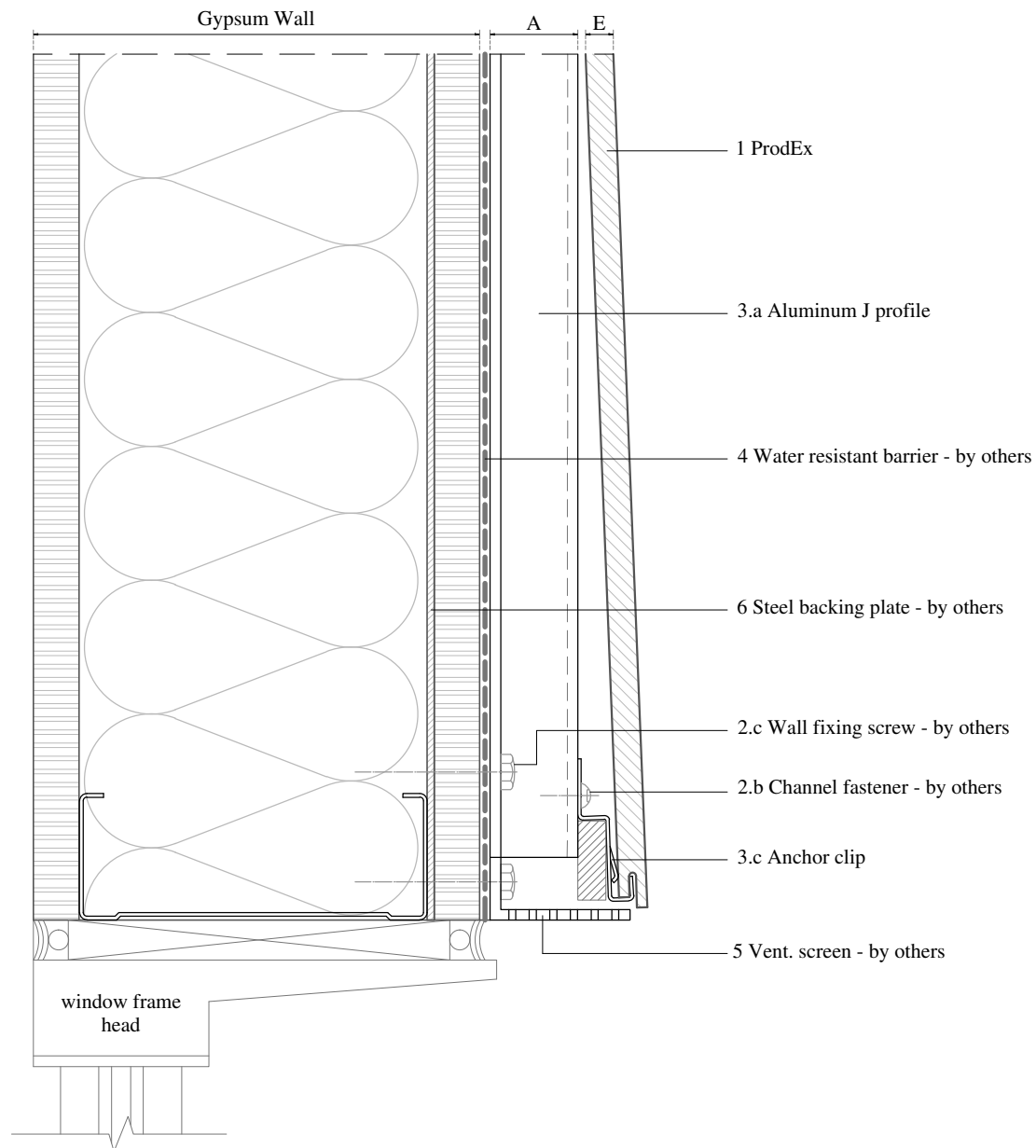
The updated version of this
present installation detail can
be found on the Prodema web.

Plan code

PREX 1-04-A-F

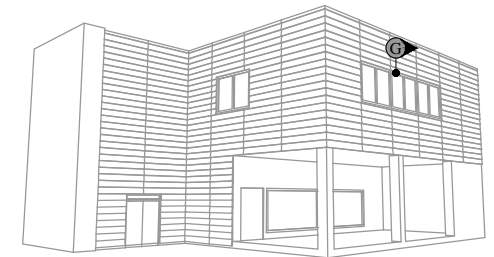
Page

8



E	Panel thickness 5/16" (8mm)
A	Required min. air chamber $\geq 3/4"$ (20mm)
6	Steel backing plate - by others
5	Vent. screen - by others
4	Water resistant barrier - by others
3.c	Anchor clip
3.a	Aluminum J profile
3	Profiles
2.c	Wall fixing screw - by others
2.b	Channel fastener - by others
2	Screws
1	ProdEx

Measurements in inches are approximated.
Real measurements in mm.



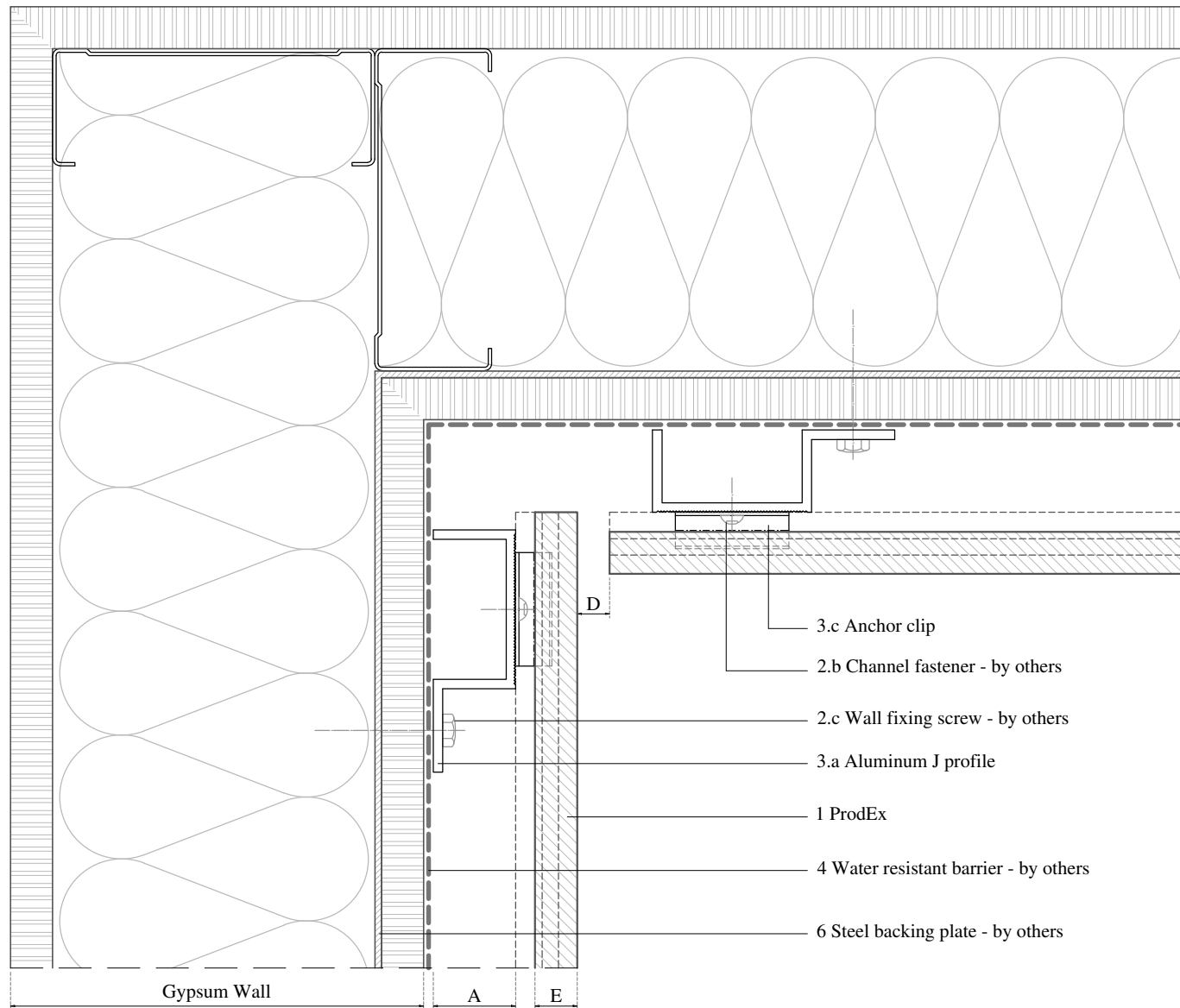
Project

**CLAPBOARD FAÇADE,
WITH BACKING PLATE**

Plan

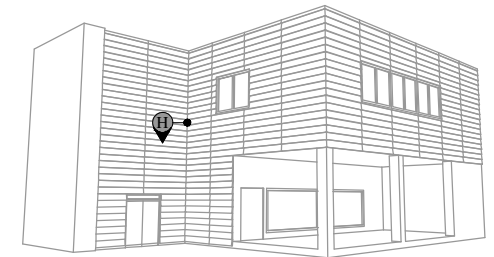
**DETAIL G
WINDOW HEAD**

<div> <div> Prodema NATURAL WOOD BEAUTY </div> <div> Product PRODEX </div> </div>	
Units Inches (")	The updated version of this present installation detail can be found on the Prodema web.
Plan code PREX 1-04-A-G	Page 9



E	Panel thickness 5/16" (8mm)
D	Expansion joint 1/4" - 3/8" (6-10mm)
A	Required min. air chamber $\geq 3/4"$ (20mm)
6	Steel backing plate - by others
4	Water resistant barrier - by others
3.c	Anchor clip
3.a	Aluminum J profile
3	Profiles
2.c	Wall fixing screw - by others
2.b	Channel fastener - by others
2	Screws
1	ProdEx

Measurements in inches are approximated.
Real measurements in mm.



Project

**CLAPBOARD FAÇADE,
WITH BACKING PLATE**

Plan

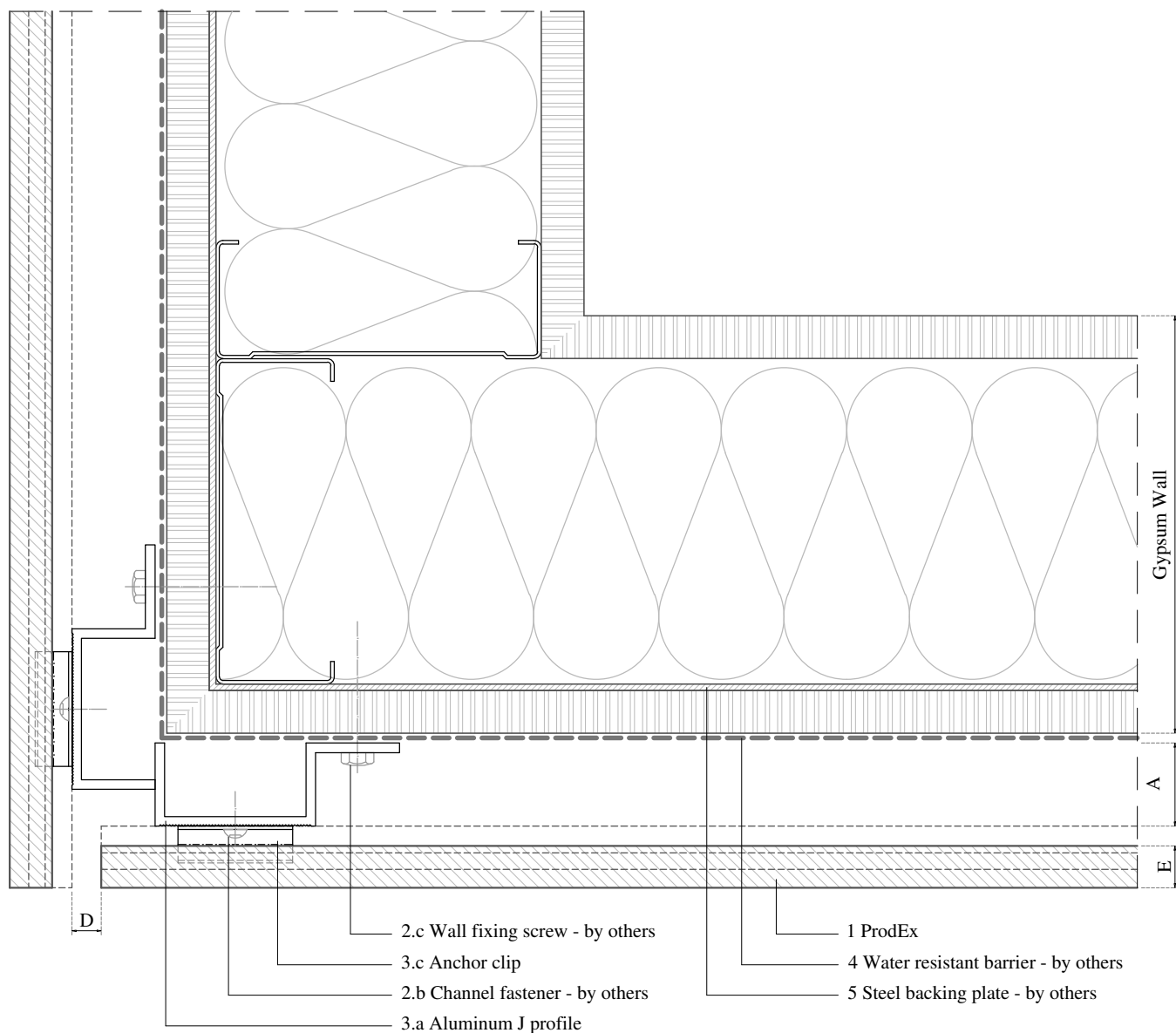
**DETAIL H
INSIDE CORNER**

Prodema NATURAL WOOD BEAUTY	Product
	PRODEX

Units	The updated version of this present installation detail can be found on the Prodema web.
Inches (")	

Plan code
PREX 1-04-A-H

Page
10



E	Panel thickness 5/16" (8mm)
D	Expansion joint 1/4" - 3/8" (6-10mm)
A	Required min. air chamber $\geq 3/4"$ (20mm)
6	Steel backing plate - by others
4	Water resistant barrier - by others
3.c	Anchor clip
3.a	Aluminum J profile
3	Profiles
2.c	Wall fixing screw - by others
2.b	Channel fastener - by others
2	Screws
1	ProdEx

Measurements in inches are approximated.
Real measurements in mm.



Project

**CLAPBOARD FAÇADE,
WITH BACKING PLATE**

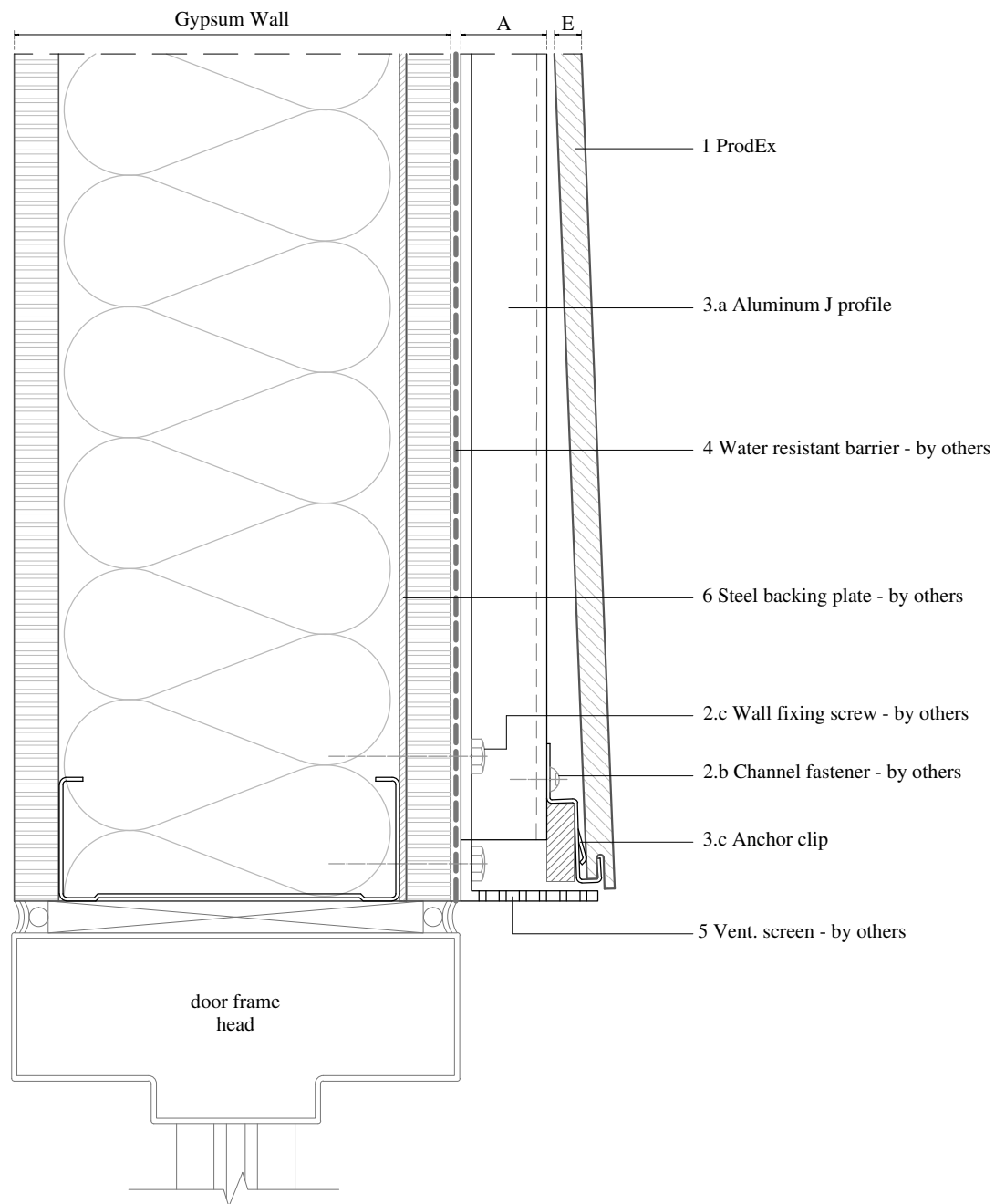
Plan

**DETAIL I
OUTSIDE CORNER**

	Product
	PRODEX

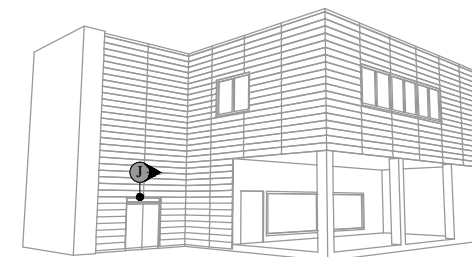
Units	The updated version of this present installation detail can be found on the Prodema web.
Inches (")	

Plan code	Page
PREX 1-04-A-I	11



E	Panel thickness 5/16" (8mm)
A	Required min. air chamber $\geq 3/4"$ (20mm)
6	Steel backing plate - by others
5	Vent. screen - by others
4	Water resistant barrier - by others
3.c	Anchor clip
3.a	Aluminum J profile
3	Profiles
2.c	Wall fixing screw - by others
2.b	Channel fastener - by others
2	Screws
1	ProdEx

Measurements in inches are approximated.
Real measurements in mm.



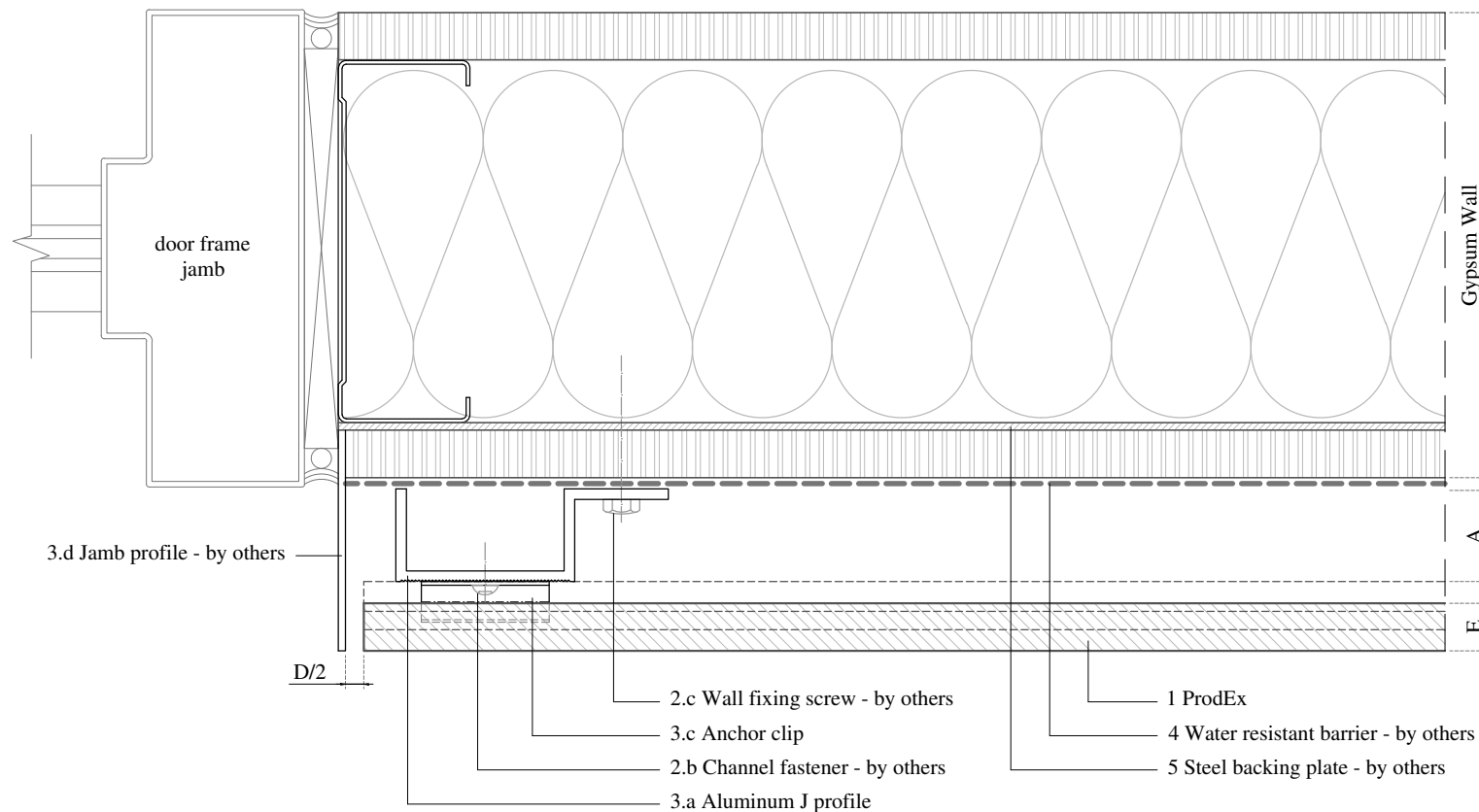
Project

**CLAPBOARD FAÇADE,
WITH BACKING PLATE**

Plan

**DETAIL J
DOOR HEAD**

<div> <div> Prodema NATURAL WOOD BEAUTY </div> <div> Product PRODEX </div> </div>	
Units Inches (")	The updated version of this present installation detail can be found on the Prodema web.
Plan code PREX 1-04-A-J	Page 12



E	Panel thickness 5/16" (8mm)
D	Expansion joint 1/4" - 3/8" (6-10mm)
A	Required min. air chamber \geq 3/4" (20mm)
6	Steel backing plate - by others
4	Water resistant barrier - by others
3.d	Jamb profile - by others
3.c	Anchor clip
3.a	Aluminum J profile
3	Profiles
2.c	Wall fixing screw - by others
2.b	Channel fastener - by others
2	Screws
1	ProdEx

Measurements in inches are approximated.
Real measurements in mm.



Project

CLAPBOARD FAÇADE, WITH BACKING PLATE

Plan

DETAIL K DOOR JAMB

	Product
	PRODEX

Units	The updated version of this present installation detail can be found on the Prodema web.
Inches (")	

Plan code
PREX 1-04-A-K

Page
13