

**CONCEALED FASTENING WITH ADHESIVE
NATURCLAD**

PARKLEX PRODEMA

How to install PARKLEX PRODEMA using concealed fastening with adhesive

NATURCLAD-W and NATURCLAD-B panels can be installed by using concealed fastening with adhesive.

This installation system is valid for facades.

The panels are mounted on vertical channels to create a ventilated air chamber behind the panels. In the event that the wall is not perfectly plumb, wall brackets or shims are used to adjust the depth of the channel installation.

Parklex Prodema is not an adhesive manufacturer. Each adhesive brand may have different instructions for their products.

Due to the continuous variations that occur in adhesive system designs, as well as in their application procedures, we recommend you to contact Parklex Prodema for the application procedures currently in use.

Panel thicknesses:

	6mm*	8mm	10mm	12mm	14mm
NATURCLAD-W	✓	✓	✓	✓	
NATURCLAD-B	✓	✓	✓	✓	

* only for curved shapes

Panel dimensions:

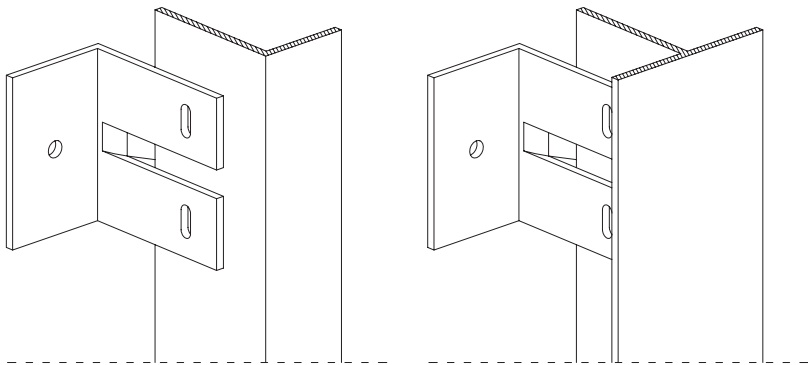
2440 x 1220mm (8' x 4')
2700 x 1220 mm (8.86' x 4') upon request

Panel layout:

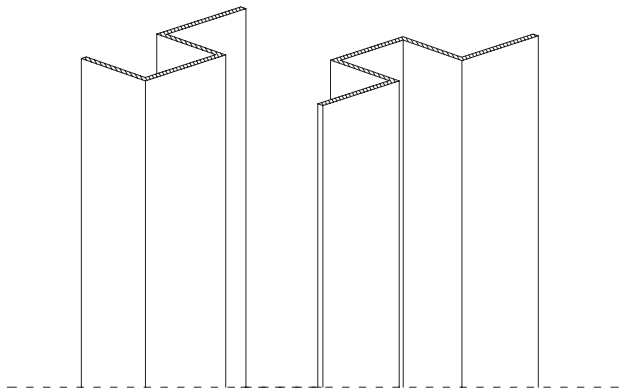
	HORIZONTAL	VERTICAL
NATURCLAD-W	✓	✓
NATURCLAD-B	✓	✓

Subframe:

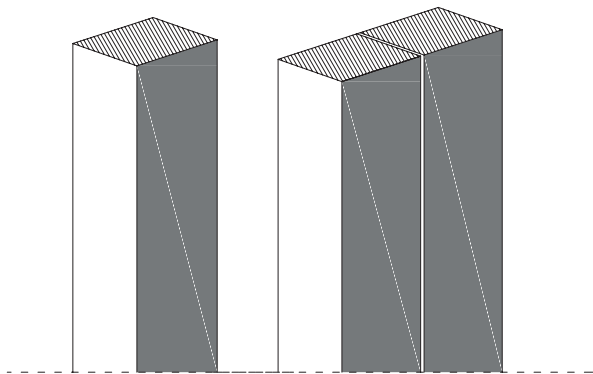
Aluminium Ls, T and wall brackets



Aluminium Js and Hats



Wooden batten



How to install PARKLEX PRODEMA using concealed fastening with adhesive

Assembly instructions:

Ventilation behind the panel is required.

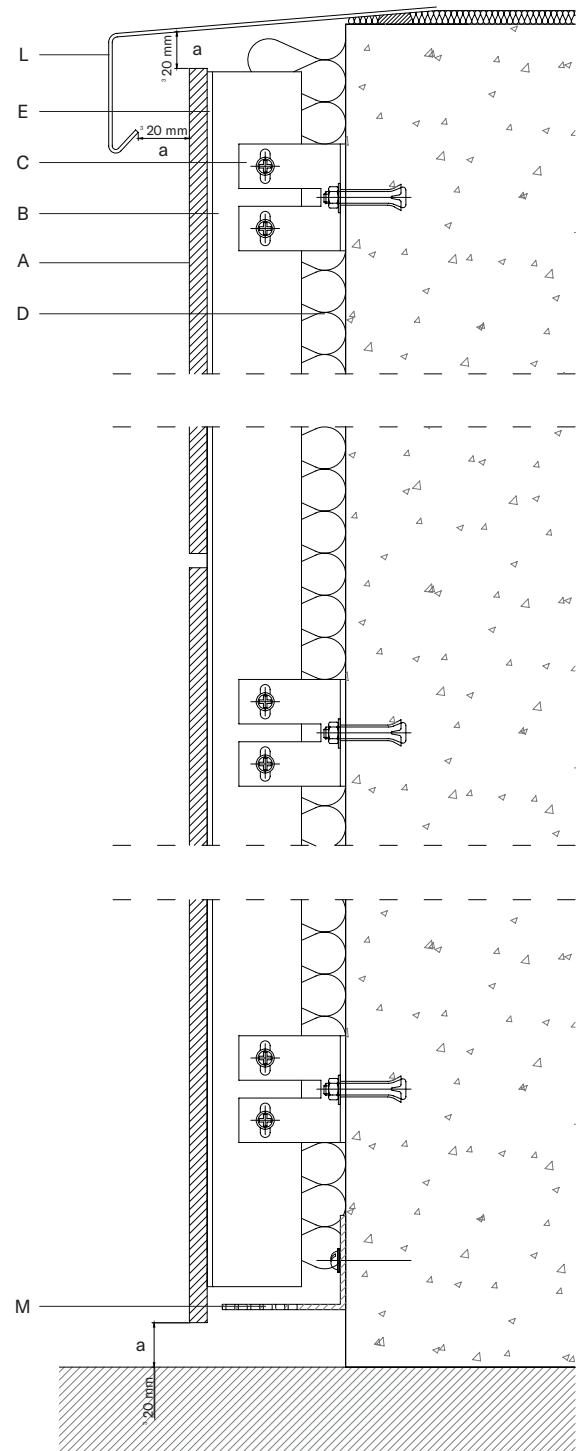
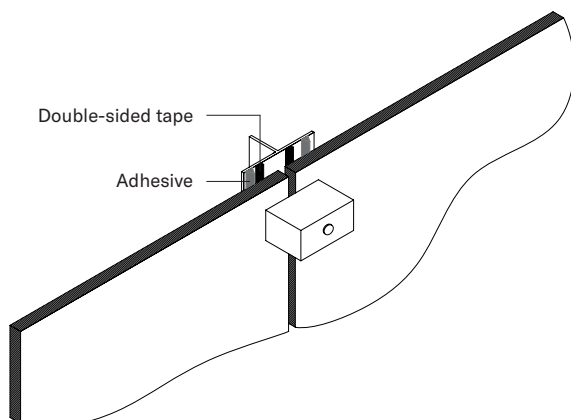
For the installation of panels in ventilated facade mode, the panels are installed on vertical channels, creating an uninterrupted flow of air in the rear part of the panel. Cladding panels must be installed as a ventilated facade; therefore, they must be separated from the wall with channels, which are installed vertically, forming a chamber with a space of ≥ 20 mm ($3/4$ "), except in those countries with specific technical code requirements. In the event that some type of insulation is installed, a double-layer subframe or a single-layer subframe with adjustable supporting elements must be installed, ensuring that the chamber is maintained. To permit air circulation in the ventilated chamber, the air intake and output must be correctly proportioned.

Head ventilation:

The ventilation at the head of the chamber must be ≥ 20 mm ($3/4$ "). This ventilation space must be left whenever there is an interruption in the face of the cladding panels.

Base ventilation:

The ventilation at the base of the chamber must be ≥ 20 mm ($3/4$ "). This ventilation space must be left whenever there is a new base i.e. if the cladding panels are interrupted by windows or other elements.



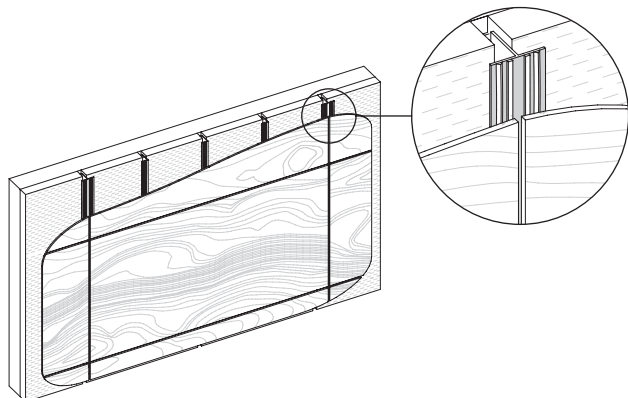
- A. Cladding panel
- B. Vertical metal profile
- C. Wall bracket
- D. Insulation
- E. Double-sided tape and adhesive
- L. Metal sheet
- M. Screen

$a \geq 20$ mm ($3/4$ ") (except for specific code requirements)

How to install PARKLEX PRODEMA using concealed fastening with adhesive

Panel thickness.

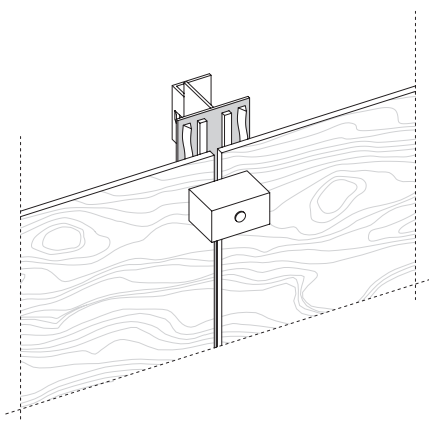
This system may only be used with panels that are 8 mm (5/16"), 10 mm (3/8") or 12 mm (1/2") thick. 6mm (1/4") panels might be needed in special circumstances, such as curved shapes.



Adhesive manufacturers may differ, but generally their systems are composed of two items: cleaner, primer, liquid adhesive and double sided tape. Once the surface is properly clean and primer is applied, adhere the double sided tape on to the channels. Then take the liquid adhesive. Remove the film from the double sided tape and place the panels on top of the hardware.

Use of clamps.

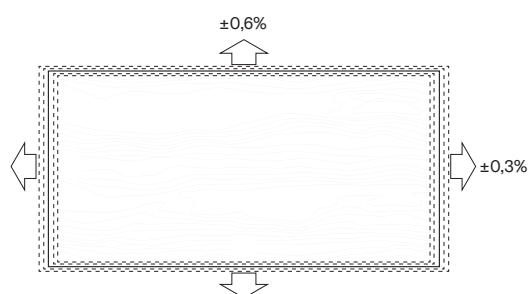
Once NATURCLAD panels are installed using this system and until the adhesive polymerizes, clamps must be placed around the perimeter of the pieces every 200 mm (8") or 300 mm (12"), specially at the corners. It is essential that applying pressure beyond the thickness of the double-sided tape is avoided. We recommend to keep the clamps at least during 24h.



Dimensional Stability:

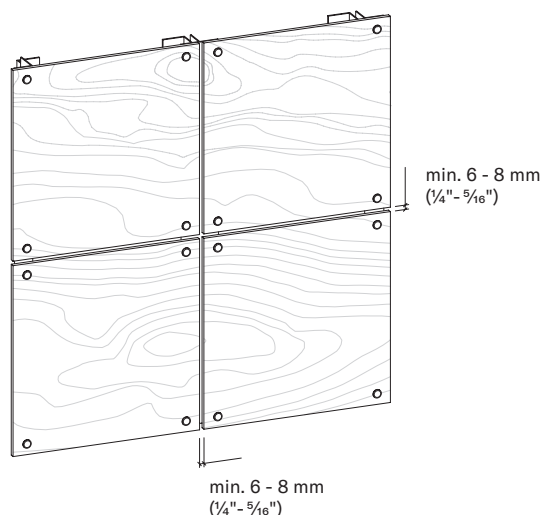
It must be kept in mind that the exterior panels will be exposed to changing seasons over the years, and they are composed of natural wood. Wood is a living material which suffers dimensional variations due to changes in humidity and temperature.

All our cladding panels are resistant to vapor, water, snow and ice. However, we do not recommend submerging panels permanently or for extended periods of time.



Expansion Joints:

It is necessary to leave expansion joints around the perimeter of all panels to ensure they can absorb any expansion movements. The thickness of these joints depends on the panel dimensions and the facade design. As an example, for panels measuring 2440x1220 mm (4'x8'), these joints must be at least 6-8 mm (1/4"-5/16"). It is recommended not to seal the joints with flexible materials, as this may lead to an accumulation of dirt around the edges of the panels.



How to install PARKLEX PRODEMA using concealed fastening with adhesive

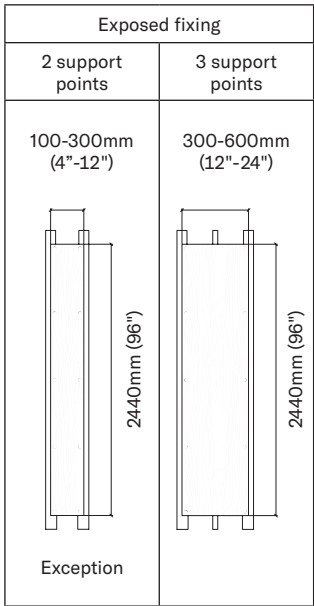
Distance between supporting points:

Using adhesive systems, the distances between profiles must be reduced when compared to those using screws or rivets, in order to ensure good adhesive polymerization.

THICKNESS	MAXIMUM DISTANCE
6mm (¼")	300mm (12")
8 mm (5/16") / 10 mm (3/8")	400 mm (16")
12 mm (½")	600 mm (24")

Three supporting points are required in every direction:

Pieces between 300mm and 600mm (12"-24") need an additional intermediate point. Narrower pieces can be installed with only two supporting points.



1. Cladding panel

2. Aluminum channels

2.1. Aluminium J channel

2.2. Aluminum HAT channel

3. Adhesives

3.1. Double-sided Tape

3.2. Adhesive Strip

4. Water resistant barrier /by others
5. Ventilation screen /by others

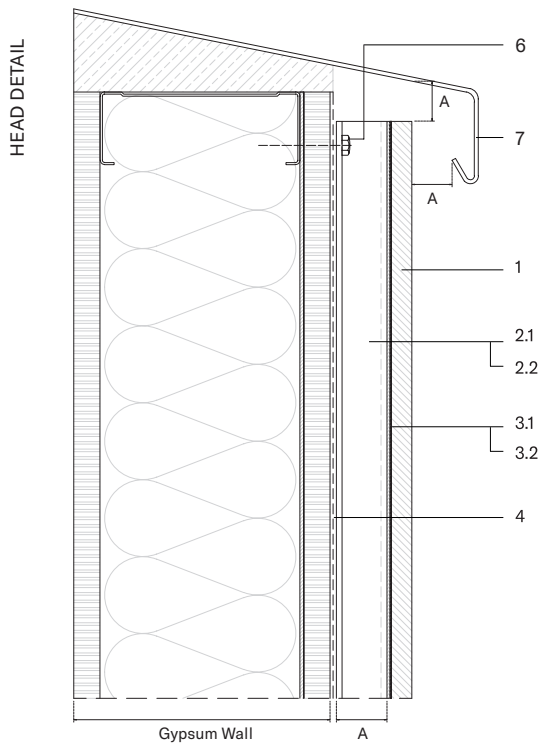
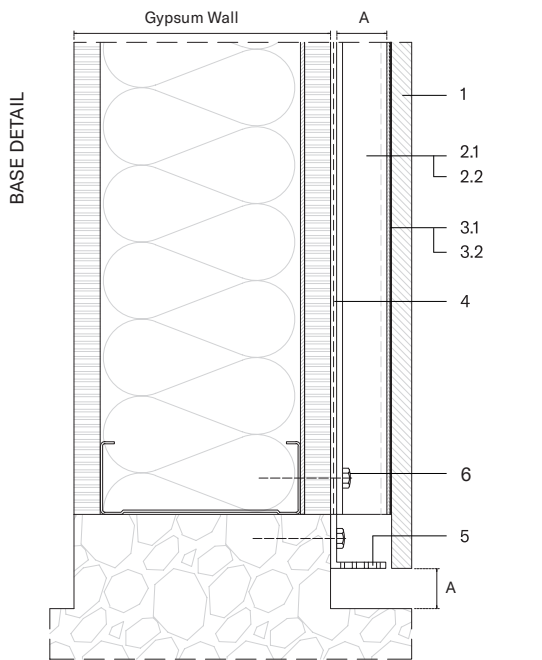
6. Wall Fixing Screw

7. Coronation Profile

A. Ventilation chamber ≥20mm (¾")

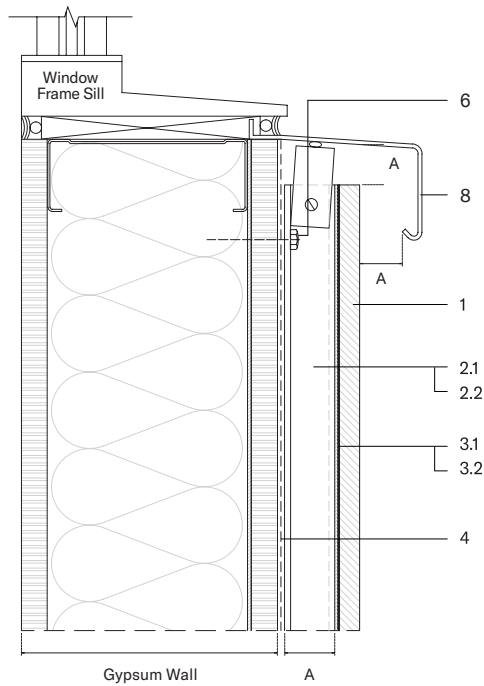
Installation details:

PARKLEX PRODEMA has an extensive range of solutions showing all types of installation details to address corners, windows, crowns, etc. All of these details are available on the Technical Area of the PARKLEX PRODEMA website.

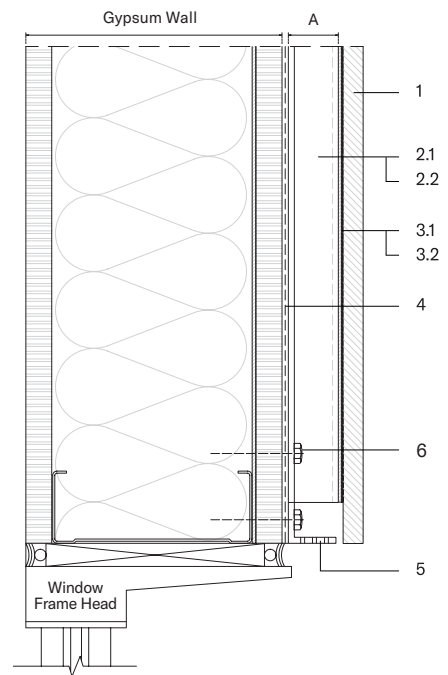


How to install PARKLEX PRODEMA using concealed fastening with adhesive

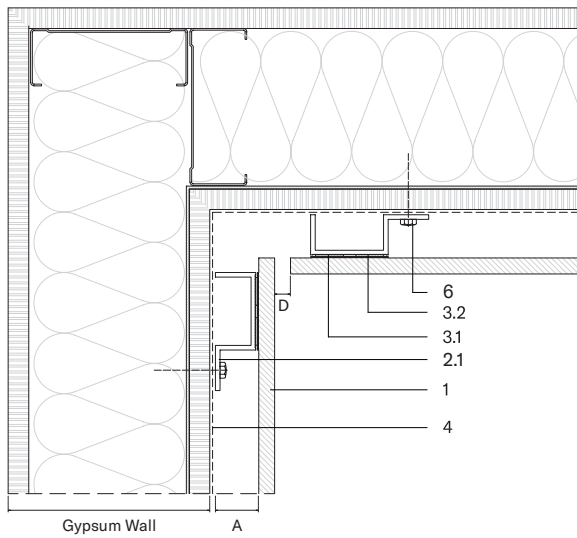
WINDOW SILL



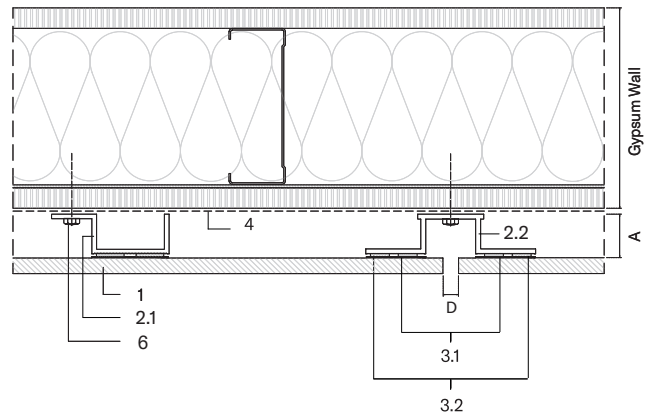
WINDOW HEAD



INSIDE CORNER



VERTICAL JOINT



- 1. Cladding panel
- 2. Aluminum channels
- 2.1. Aluminium J channel
- 2.2. Aluminum HAT channel
- 3. Adhesive /by others
- 3.1. Double-sided tape

- 3.2. Adhesive Strip
- 4. Water resistant barrier /by others
- 5. Ventilation screen /by others
- 6. Wall Fixing Screw /by others
- 7. Flashing /by others
- 8. Window Sill /by others

- A. Ventilation chamber $\geq 20\text{mm}$ ($\frac{3}{4}"$)
- D. Joint between panels $> 6\text{ mm}$ ($\frac{1}{4}"$)