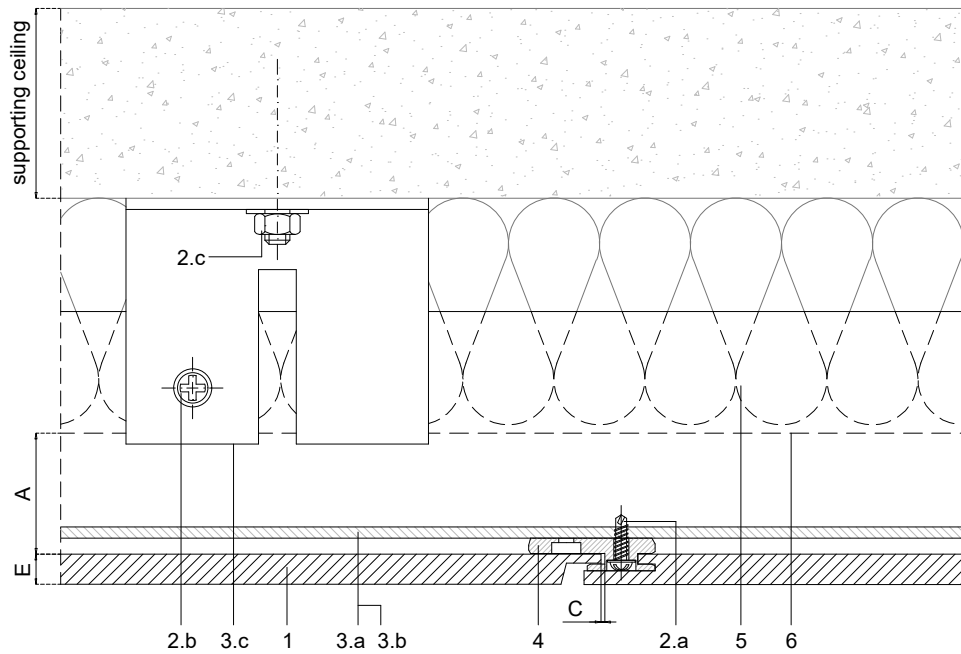


A-A'	JOINT DETAIL (PERP. TO GRAIN DIRECTION)
B-B'	JOINT DETAIL (GRAIN DIRECTION)
C-C'	SOFFIT-WALL INTERIOR DETAIL (PERP. TO GRAIN DIRECTION)
D-D'	SOFFIT-WALL EXTERIOR DETAIL (PERP. TO GRAIN DIRECTION)
E-E'	SOFFIT-WALL INTERIOR DETAIL (GRAIN DIRECTION)
F-F'	SOFFIT-WALL EXTERIOR DETAIL (GRAIN DIRECTION)

The updated version of this present installation detail can be found on the PARKLEX PRODEMA web.
Panel sizes and maximum distances in technical catalogue.

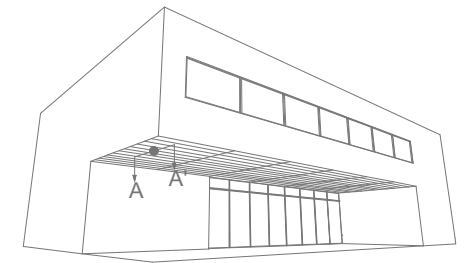
PARKLEX PRODEMA
www.parklexprodema.com

PRODUCT	NATURSOFFIT	SYSTEM	EXTERIOR SLAT SYSTEM (METAL FRAME), ON SOFFITS	DRAWN BY	Joseba Salbide	DATE	01/2022
PLAN#	NSF2-03-A-G.P.	TITLE	GENERAL PERSPECTIVE	APPROVED BY	Maialen Irastorza	PAGE	1 / 7



1	NATURSOFFIT
2	Screws
2.a	Clip fixing screw
2.b	Channel fastener - by others
2.c	Wall fixing screw - by others
2.d	Sx3 screw
2.e	Washer 1/8" (3mm) - by others
3	Profiles
3.a	Aluminium L profile (40x60)
3.b	Aluminium T profile
3.c	Wall bracket
3.d	Corner profile - by others
4	Fixing clip
5	Thermal insulation - by others
6	Water resistant barrier - by others

A	Required min. air chamber $\geq 20\text{mm}$
B	Circulation of air $\geq 20\text{mm}$
C	Horizontal expansion joint 1mm
D	Vertical expansion joint 6-8mm
E	Panel thickness $\geq 8\text{mm}$

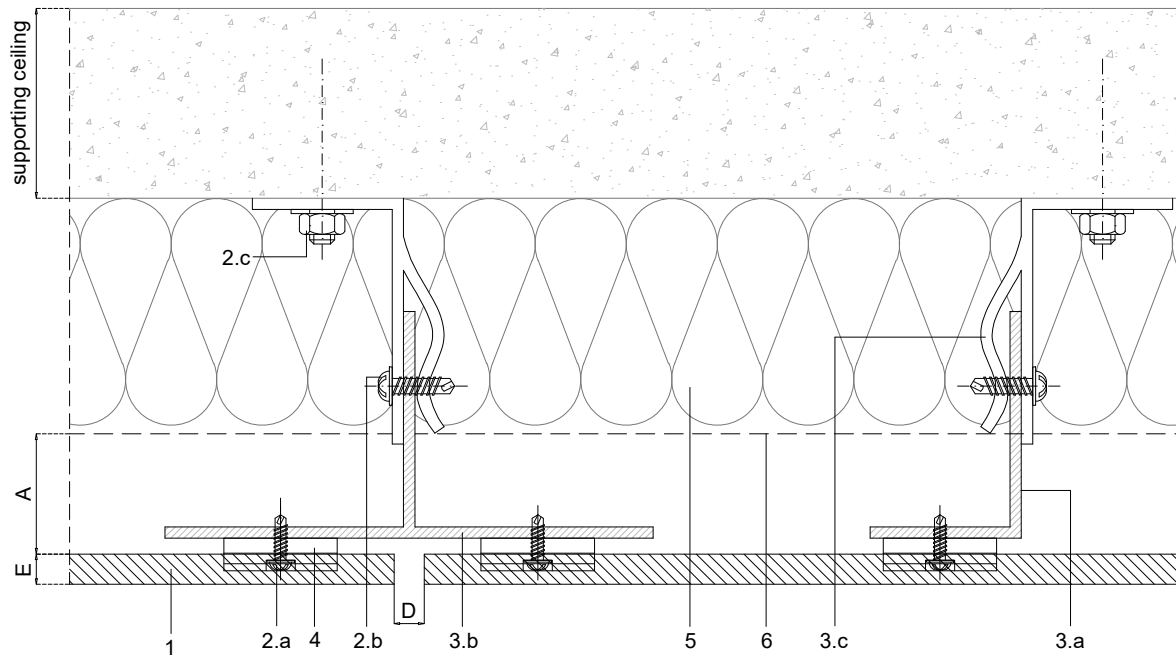


Scale 1:2

Measures: mm

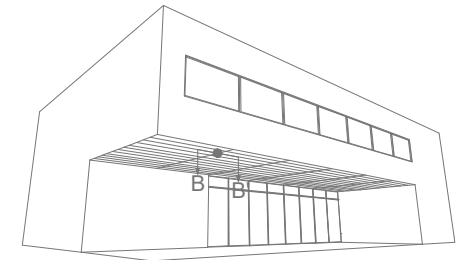
PARKLEX PRODEMA
www.parklexprodema.com

PRODUCT	NATURSOFFIT	SYSTEM	EXTERIOR SLAT SYSTEM (METAL FRAME), ON SOFFITS	DRAWN BY	Joseba Salbide	DATE	01/2022
PLAN#	NSF2-03-A-A	TITLE	DETAIL A-A' // JOINT DETAIL (PERP. TO GRAIN DIRECTION)	APPROVED BY	Maialen Irastorza	PAGE	2 / 7



1	NATURSOFFIT
2	Screws
2.a	Clip fixing screw
2.b	Channel fastener - by others
2.c	Wall fixing screw - by others
2.d	Sx3 screw
2.e	Washer 1/8" (3mm) - by others
3	Profiles
3.a	Aluminium L profile (40x60)
3.b	Aluminium T profile
3.c	Wall bracket
3.d	Corner profile - by others
4	Fixing clip
5	Thermal insulation - by others
6	Water resistant barrier - by others

A	Required min. air chamber $\geq 20\text{mm}$
B	Circulation of air $\geq 20\text{mm}$
C	Horizontal expansion joint 1mm
D	Vertical expansion joint 6-8mm
E	Panel thickness $\geq 8\text{mm}$

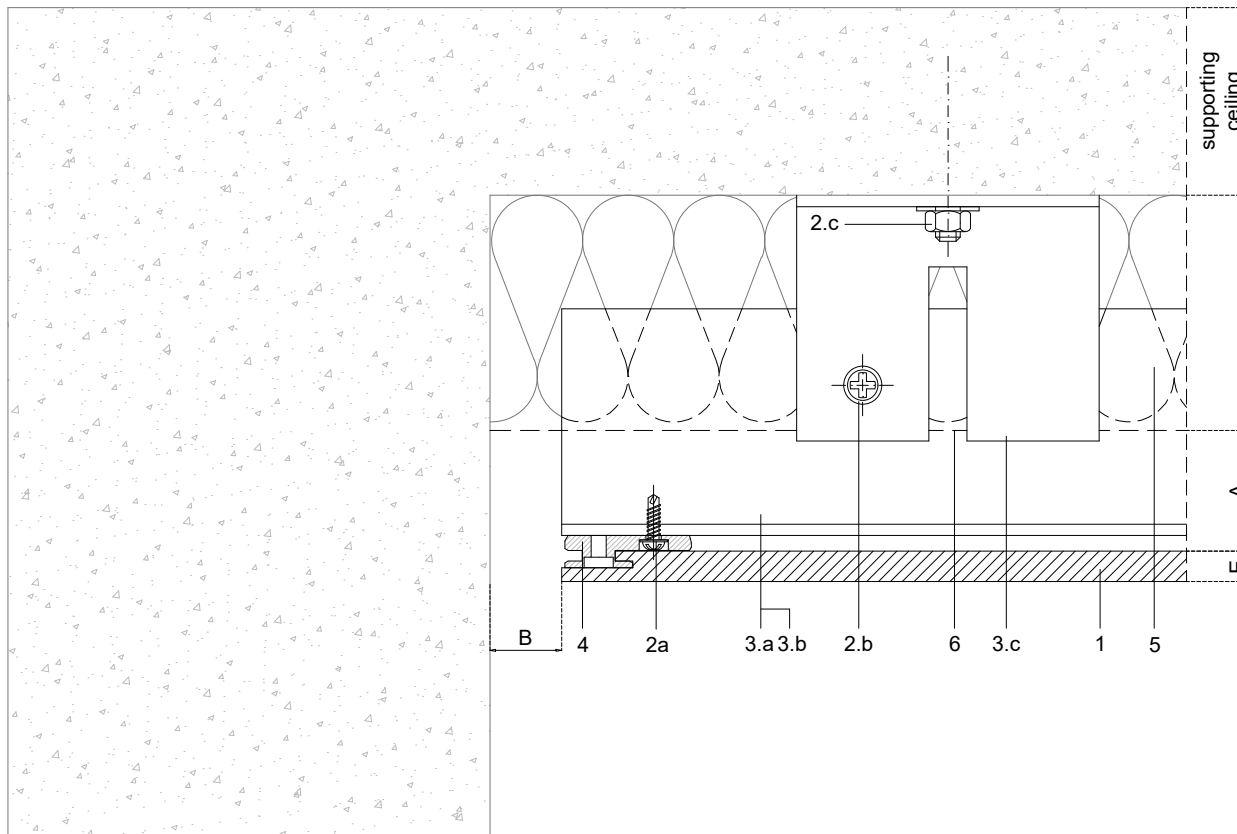


Scale 1:2

Measures: mm

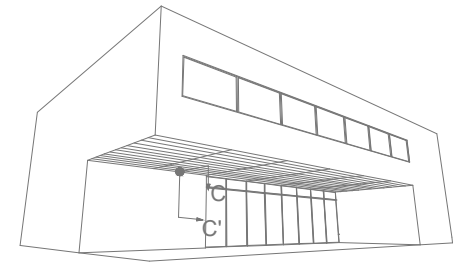
PARKLEX PRODEMA
www.parklexprodema.com

PRODUCT	NATURSOFFIT	SYSTEM	EXTERIOR SLAT SYSTEM (METAL FRAME), ON SOFFITS	DRAWN BY	Joseba Salbide	DATE	01/2022
PLAN#	NSF2-03-A-B	TITLE	DETAIL B-B' // JOINT DETAIL (GRAIN DIRECTION)	APPROVED BY	Maialen Irastorza	PAGE	3 / 7



1	NATURSOFFIT
2	Screws
2.a	Clip fixing screw
2.b	Channel fastener - by others
2.c	Wall fixing screw - by others
2.d	Sx3 screw
2.e	Washer 1/8" (3mm) - by others
3	Profiles
3.a	Aluminium L profile (40x60)
3.b	Aluminium T profile
3.c	Wall bracket
3.d	Corner profile - by others
4	Fixing clip
5	Thermal insulation - by others
6	Water resistant barrier - by others

A	Required min. air chamber $\geq 20\text{mm}$
B	Circulation of air $\geq 20\text{mm}$
C	Horizontal expansion joint 1mm
D	Vertical expansion joint 6-8mm
E	Panel thickness $\geq 8\text{mm}$

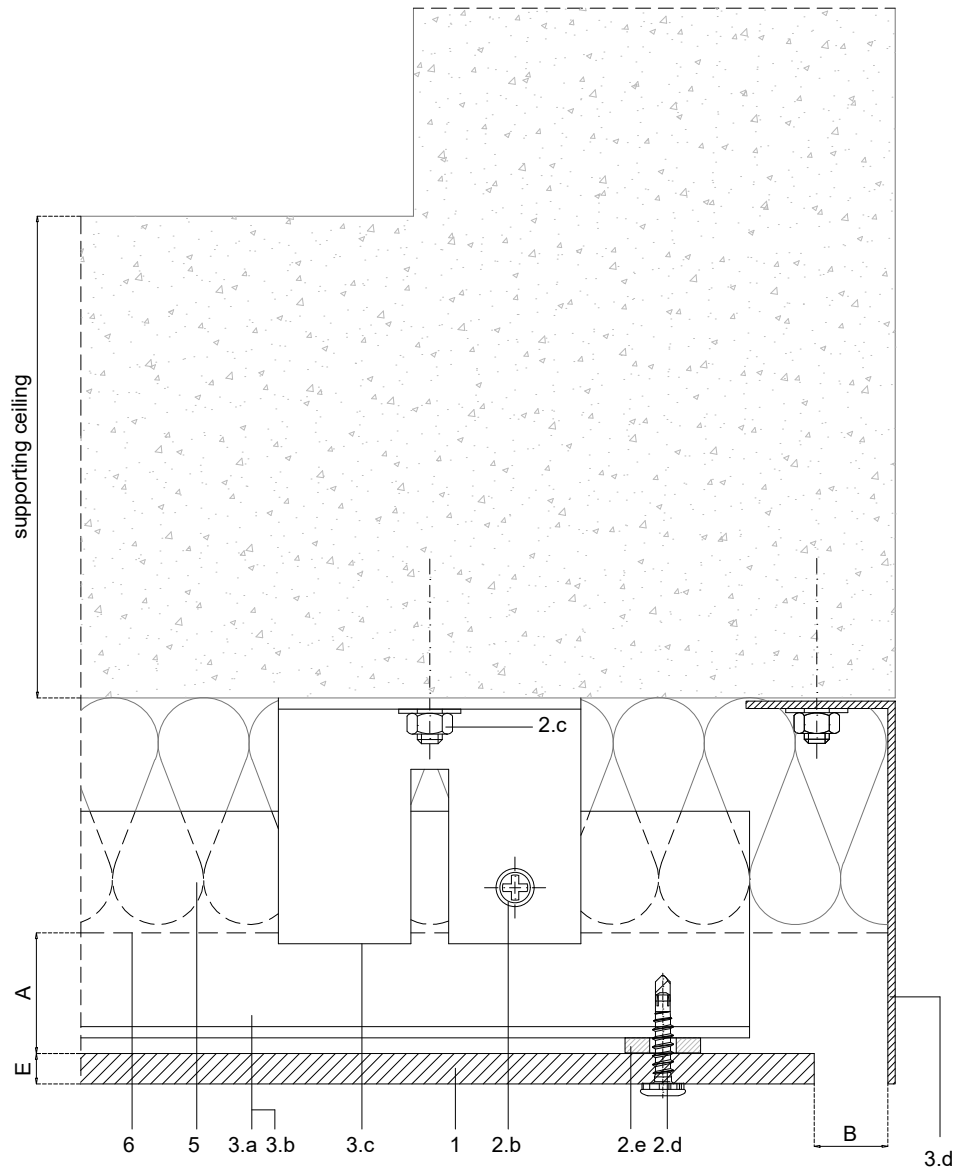


Scale 1:2

Measures: mm

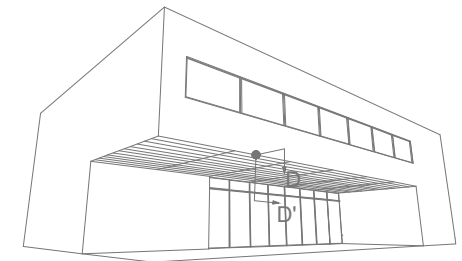
PARKLEX PRODEMA
www.parklexprodema.com

PRODUCT	NATURSOFFIT	SYSTEM	EXTERIOR SLAT SYSTEM (METAL FRAME), ON SOFFITS	DRAWN BY	Joseba Salbide	DATE	01/2022
PLAN#	NSF2-03-A-C	TITLE	DETAIL C-C' // SOFFIT-WALL INTERIOR CORNER (PERP. TO GRAIN DIRECTION)	APPROVED BY	Maialen Irastorza	PAGE	4 / 7



1	NATURSOFFIT
2	Screws
2.a	Clip fixing screw
2.b	Channel fastener - by others
2.c	Wall fixing screw - by others
2.d	Sx3 screw
2.e	Washer 1/8" (3mm) - by others
3	Profiles
3.a	Aluminium L profile (40x60)
3.b	Aluminium T profile
3.c	Wall bracket
3.d	Corner profile - by others
4	Fixing clip
5	Thermal insulation - by others
6	Water resistant barrier - by others

A	Required min. air chamber $\geq 20\text{mm}$
B	Circulation of air $\geq 20\text{mm}$
C	Horizontal expansion joint 1mm
D	Vertical expansion joint 6-8mm
E	Panel thickness $\geq 8\text{mm}$

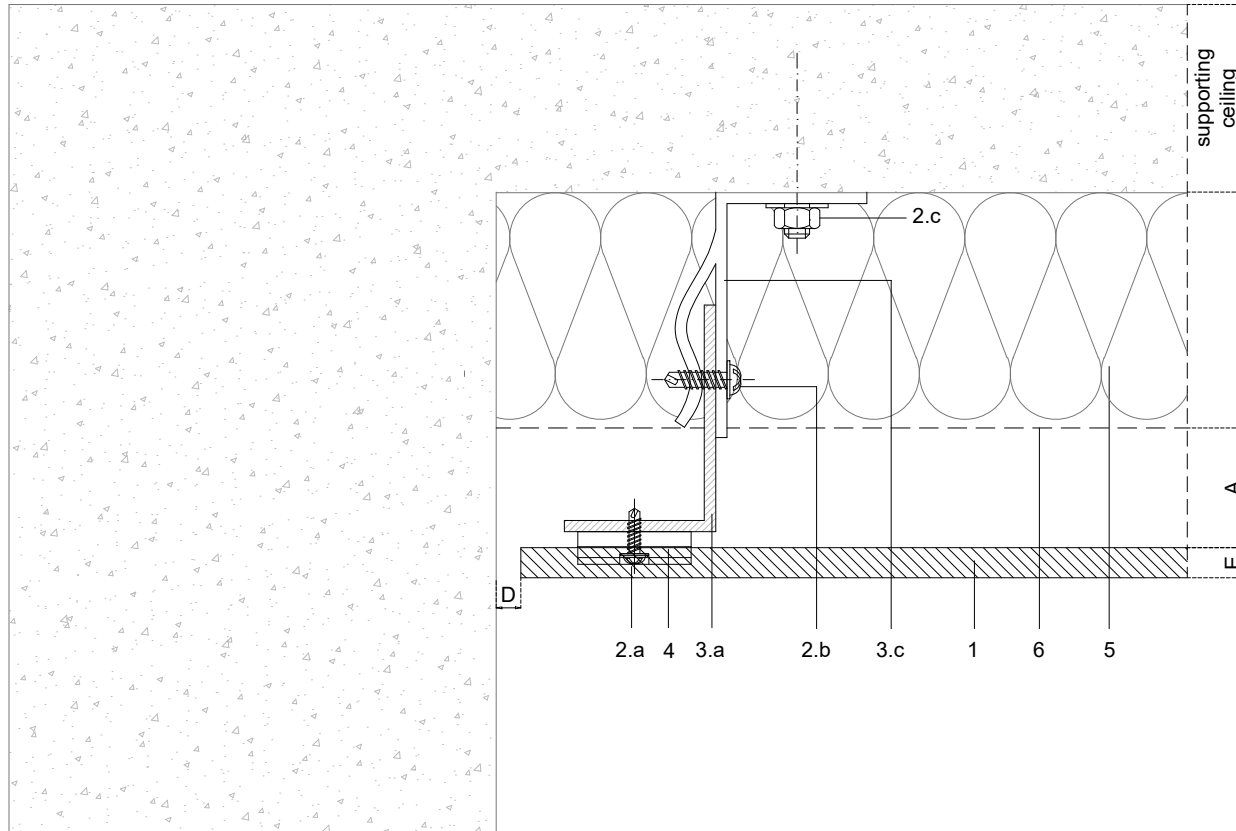


Scale 1:2

Measures: mm

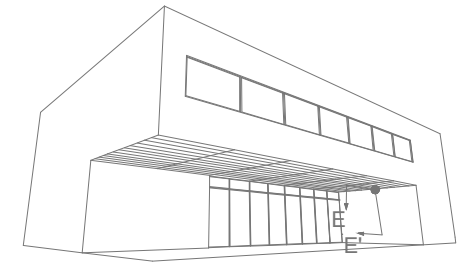
PARKLEX PRODEMA
www.parklexprodema.com

PRODUCT	NATURSOFFIT	SYSTEM	EXTERIOR SLAT SYSTEM (METAL FRAME), ON SOFFITS	DRAWN BY	Joseba Salbide	DATE	01/2022
PLAN#	NSF2-03-A-D	TITLE	DETAIL D-D' // SOFFIT-WALL EXTERIOR CORNER (PERP. TO GRAIN DIRECTION)	APPROVED BY	Maialen Irastorza	PAGE	5 / 7



1	NATURSOFFIT
2	Screws
2.a	Clip fixing screw
2.b	Channel fastener - by others
2.c	Wall fixing screw - by others
2.d	Sx3 screw
2.e	Washer 1/8" (3mm) - by others
3	Profiles
3.a	Aluminium L profile (40x60)
3.b	Aluminium T profile
3.c	Wall bracket
3.d	Corner profile - by others
4	Fixing clip
5	Thermal insulation - by others
6	Water resistant barrier - by others

A	Required min. air chamber $\geq 20\text{mm}$
B	Circulation of air $\geq 20\text{mm}$
C	Horizontal expansion joint 1mm
D	Vertical expansion joint 6-8mm
E	Panel thickness $\geq 8\text{mm}$

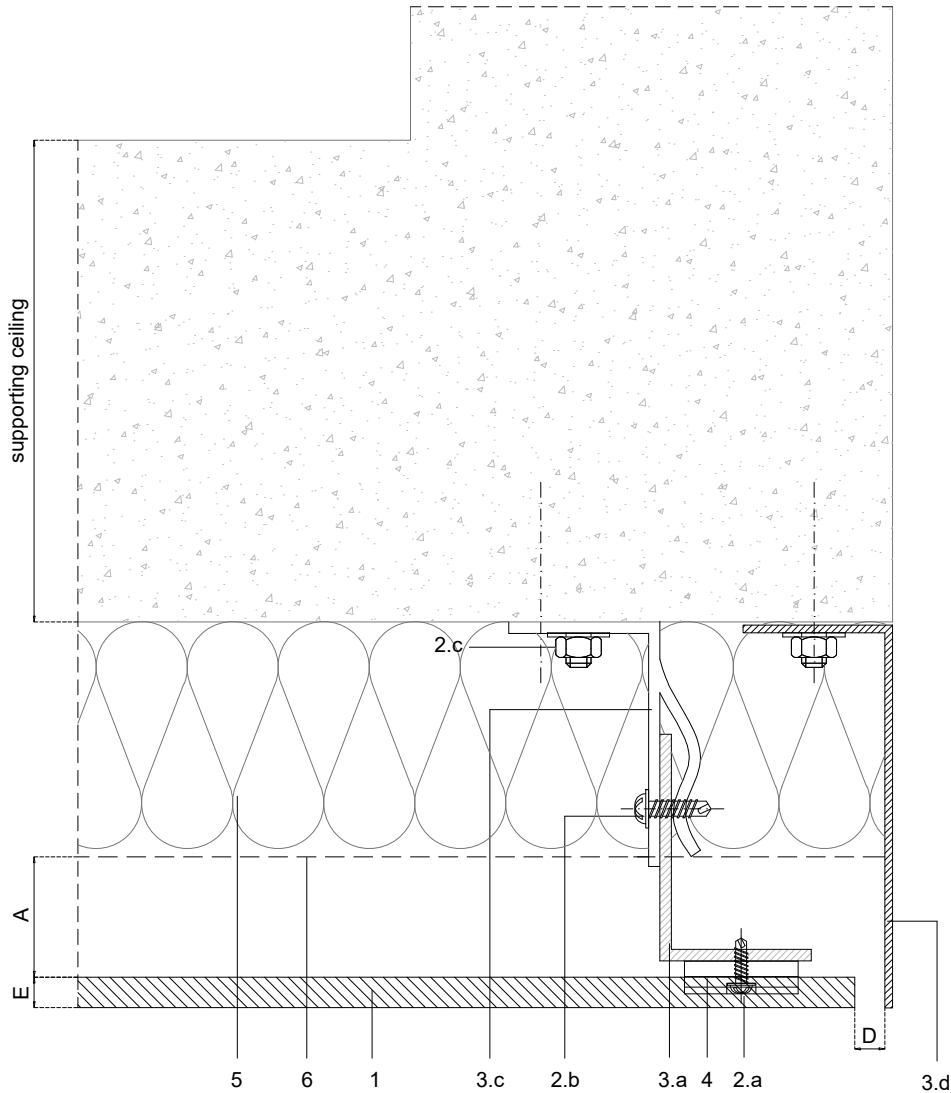


Scale 1:2

Measures: mm

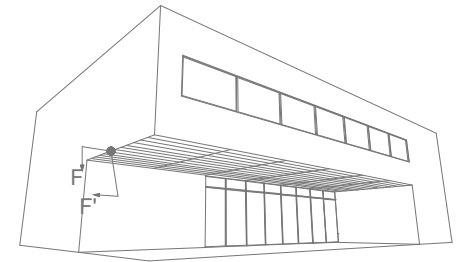
PARKLEX PRODEMA
www.parklexprodema.com

PRODUCT	NATURSOFFIT	SYSTEM	EXTERIOR SLAT SYSTEM (METAL FRAME), ON SOFFITS	DRAWN BY	Joseba Salbide	DATE	01/2022
PLAN#	NSF2-03-A-E	TITLE	DETAIL E-E' // SOFFIT-WALL INTERIOR CORNER (GRAIN DIRECTION)	APPROVED BY	Maialen Irastorza	PAGE	6 / 7



1	NATURSOFFIT
2	Screws
2.a	Clip fixing screw
2.b	Channel fastener - by others
2.c	Wall fixing screw - by others
2.d	Sx3 screw
2.e	Washer 1/8" (3mm) - by others
3	Profiles
3.a	Aluminium L profile (40x60)
3.b	Aluminium T profile
3.c	Wall bracket
3.d	Corner profile - by others
4	Fixing clip
5	Thermal insulation - by others
6	Water resistant barrier - by others

A	Required min. air chamber $\geq 20\text{mm}$
B	Circulation of air $\geq 20\text{mm}$
C	Horizontal expansion joint 1mm
D	Vertical expansion joint 6-8mm
E	Panel thickness $\geq 8\text{mm}$



Scale 1:2

Measures: mm

PARKLEX PRODEMA
www.parklexprodema.com

PRODUCT	NATURSOFFIT	SYSTEM	EXTERIOR SLAT SYSTEM (METAL FRAME), ON SOFFITS	DRAWN BY	Joseba Salbide	DATE	01/2022
PLAN#	NSF2-03-A-F	TITLE	DETAIL F-F // SOFFIT-WALL EXTERIOR CORNER (GRAIN DIRECTION)	APPROVED BY	Maialen Irastorza	PAGE	7 / 7